

# LET'S CONNECT

■■■■ PRINECT ■■  
USER DAYS

# Agenda

- Prinect workflow for digital print
- Overview of Digital Print Manager, DPM
- What's new on Versafire (Toner)
- What's new on Jetfire (Inkjet)
- Summary



- Prinect workflow for digital print
- Overview of Digital Print Manager, DPM
- What's new on Versafire (Toner)
- What's new on Jetfire (Inkjet)
- Summary



## Prinect workflow for digital print

### One workflow for the entire print shop

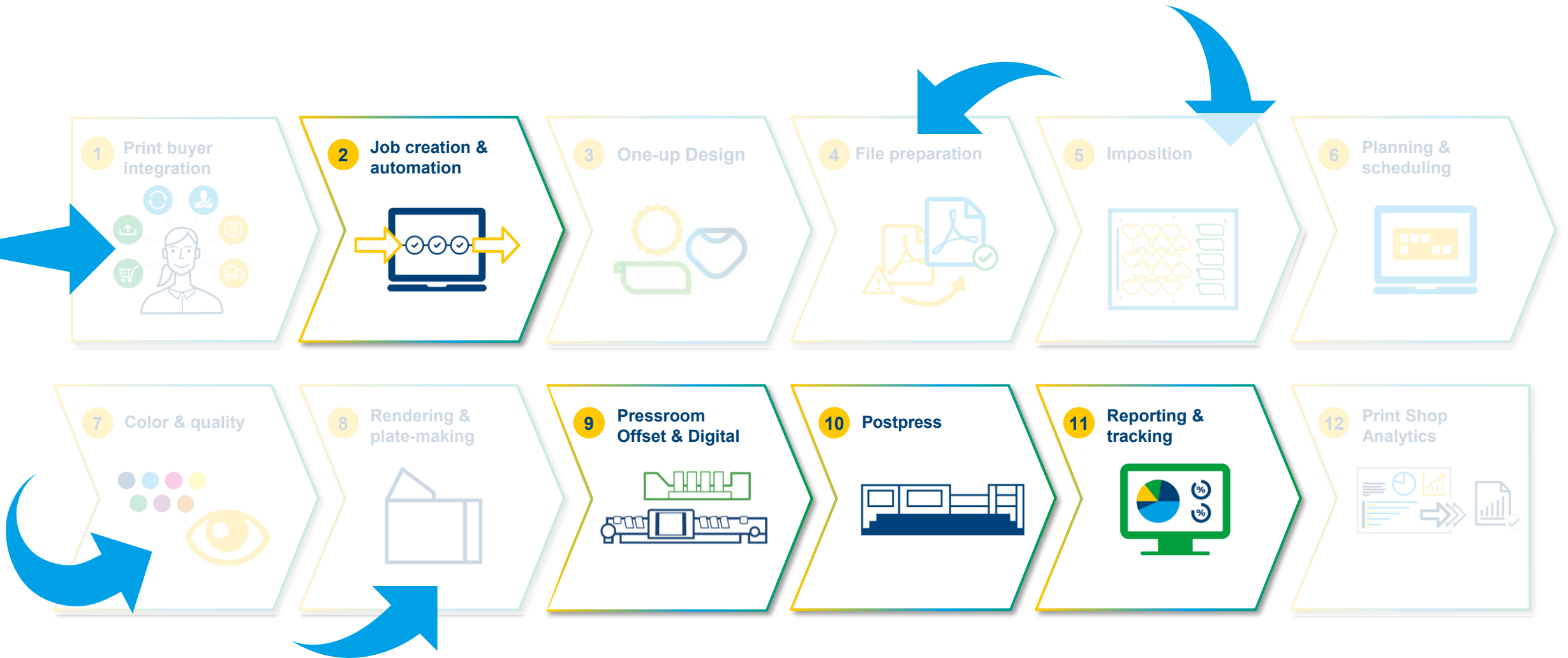
- ▶ **Integrating** production and business processes as well as offset and digital
- ▶ **Automated** data transfer across departments and processes
- ▶ **Optimizing** processes based on analysis of production data



# Prinect Production – Building Blocks



# Prinect Production – The choice is yours

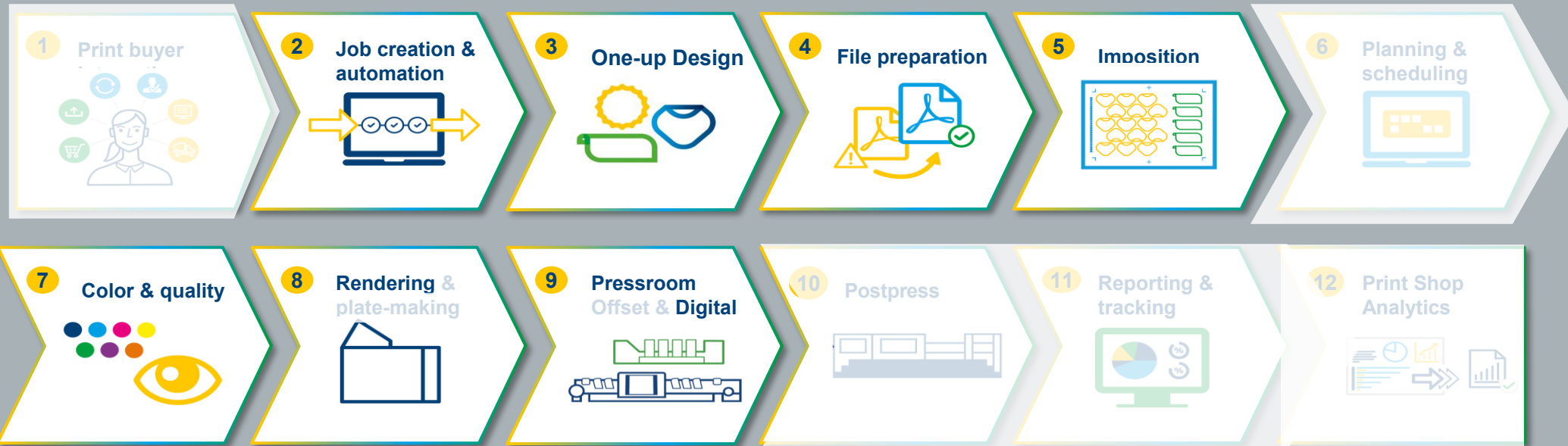


# Prinect DFE

It is much more than just a postscript rip!

It is the smallest workflow you can have from Prinect.

## Prinect DFE



- Prinect workflow for digital print
- Overview of Digital Print Manager, DPM
- What's new on Versafire (Toner)
- What's new on Jetfire (Inkjet)
- Summary





# Digital print landscape

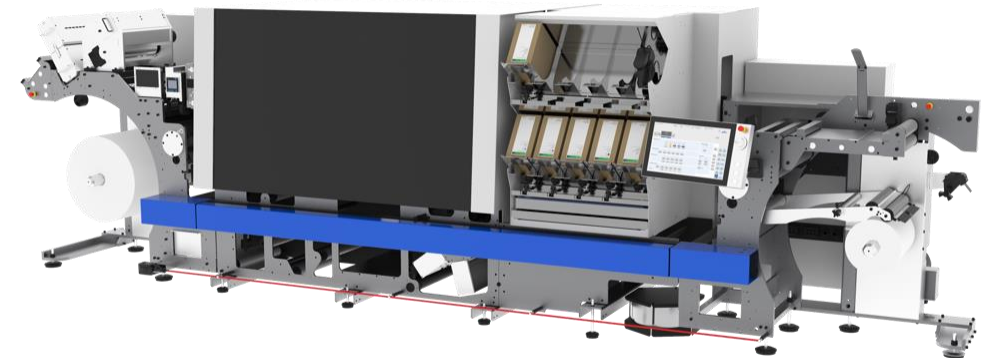
Actual machine portfolio – digital label



Gallus Five



Labelfire 340



Gallus One

# Prinect DPM – Digital Print Manager

The screenshot displays the Prinect DPM software interface for a job named "Flexo Job 1". The top menu bar includes File, Edit, View, Job, Tools, and Help. The main workspace shows a 2x4 grid of product labels for "Jofina Waldfrucht" milk drinks. Each label features a blue and red design with images of raspberries and blueberries. The labels are arranged in two rows and four columns. The top-left label is highlighted with a green border. The interface includes a toolbar with icons for Product Description, Processing, Colors, Documents, Pages, Imposition, Plates, Proof, Print, and Digital Printing. The right sidebar contains settings for Paper (340mm Rolle, Width 340.0), Layout (Columns 4, Rows 2, Repeat checked), and a "Job Notes" section. The bottom of the interface has buttons for Color Matching, Submit, and Close Job, along with a search bar.

File | Edit | View | Job | Tools | Help

HEIDELBERG

Flexo Job 1

Overview Name: Flexo Job 1 Number: Flexo Job 1

Product Description Processing Colors

Documents Pages Imposition Plates Proof Print Digital Printing History

Documents

Sheet 100%

340 x 476.25

MOLKEDRINK 0,1% Fett GRÜNTAL

Jofina Waldfrucht

Milchschokolade mit Feuchthalt.   
Nährwertangaben pro 100g:   
Energie 1500 kJ / 350 kcal   
Fett 1,0g   
Kohlenhydrate 10g   
Eiweiß 10g   
Milchsäure 10g   
Milchsäure, Inulin, Fructose,   
Lipidfreie emulsiertes   
Milchpulver   
Vor dem Öffnen gut schütteln   
Inhalt: 500 g e

Milchschokolade mit Feuchthalt.   
Nährwertangaben pro 100g:   
Energie 1500 kJ / 350 kcal   
Fett 1,0g   
Kohlenhydrate 10g   
Eiweiß 10g   
Milchsäure 10g   
Milchsäure, Inulin, Fructose,   
Lipidfreie emulsiertes   
Milchpulver   
Vor dem Öffnen gut schütteln   
Inhalt: 500 g e

Milchschokolade mit Feuchthalt.   
Nährwertangaben pro 100g:   
Energie 1500 kJ / 350 kcal   
Fett 1,0g   
Kohlenhydrate 10g   
Eiweiß 10g   
Milchsäure 10g   
Milchsäure, Inulin, Fructose,   
Lipidfreie emulsiertes   
Milchpulver   
Vor dem Öffnen gut schütteln   
Inhalt: 500 g e

Milchschokolade mit Feuchthalt.   
Nährwertangaben pro 100g:   
Energie 1500 kJ / 350 kcal   
Fett 1,0g   
Kohlenhydrate 10g   
Eiweiß 10g   
Milchsäure 10g   
Milchsäure, Inulin, Fructose,   
Lipidfreie emulsiertes   
Milchpulver   
Vor dem Öffnen gut schütteln   
Inhalt: 500 g e

\*PagePrint\_NarrowWeb

Paper 340mm Rolle Width 340.0

Layout Use CFF2 File

Columns 4 Repeat Rows 2 Repeat

270° 2.125 3.0

Mirror Content for Output

Color Matching... Submit... Close Job

Find...

# Digital print landscape

## Actual machine portfolio - Commercial



15.000 – 120.000 SRA3/month

Versafire LV



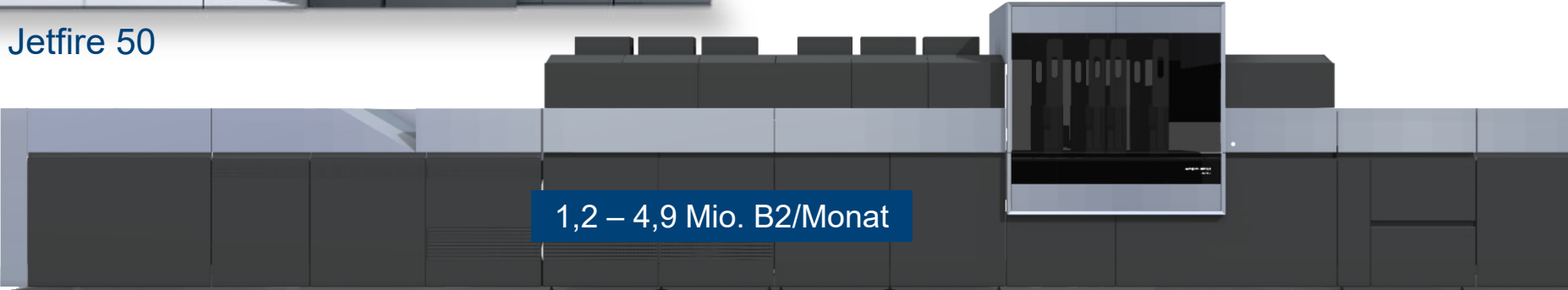
60.000 – 500.000 SRA3/month

Versafire LP



600.000 – 5 Mio. SRA3/month

Jetfire 50



1,2 – 4,9 Mio. B2/Monat

Jetfire 75 (planned for 2026 – format 614 × 750 mm)

The print volume is based on simplex sheets.

# Prinect DPM – Digital Print Manager

File Edit View Job Tools Help

HEIDELBERG

Job Overview Name: Broschüre Number: 16-17162

Processing Colors Properties Processing Documents 1 Pages 40 Digital Printing History

Documents Sheet 48.63% 1x

job list

1  
2  
3  
4  
5

1/40 1/1

1/2 1/39

1/38 1/3

1/4 1/37

PagePrint

Color spaces

- Enable CMYK Color Management
- ISOcoated\_v2\_ec.icc
- Gray50coated\_v2\_ec.icc
- HDM sRGB Profile.icm

Use Embedded Profiles

- CMYK
- RGB
- Gray

Preserve colors

- Off
- Off

Policy for 100% black in text / graphics

- No special policy
- Keep 100% Black
- Black Overprint
- Text
- Graphics

Spot Colors

- Remove Transparent Spot Colors
- Remove "Die Line"
- On black-and-white surfaces convert to K
- Map Spot Colors to Process Colors
- Spot Color Matching...

Output Profile

For Color Copy 160 Mondri SRA3

- Automatic Selection by Paper Type
- Convert to Gray
- Other Profile
- Isotype4.icc
- Profile Customization...

Color Matching... Submit... Close Job

Elements Sequence Status Recent Message Modification Date

job Notes Digital Printing Terminal

- Prinect workflow for digital print
- Overview of Digital Print Manager, DPM
- What's new on Versafire (Toner)
- What's new on Jetfire (Inkjet)
- Summary



# What's new on Versafire (Toner)

## Digital inline/nearline finishing support

### Functionality

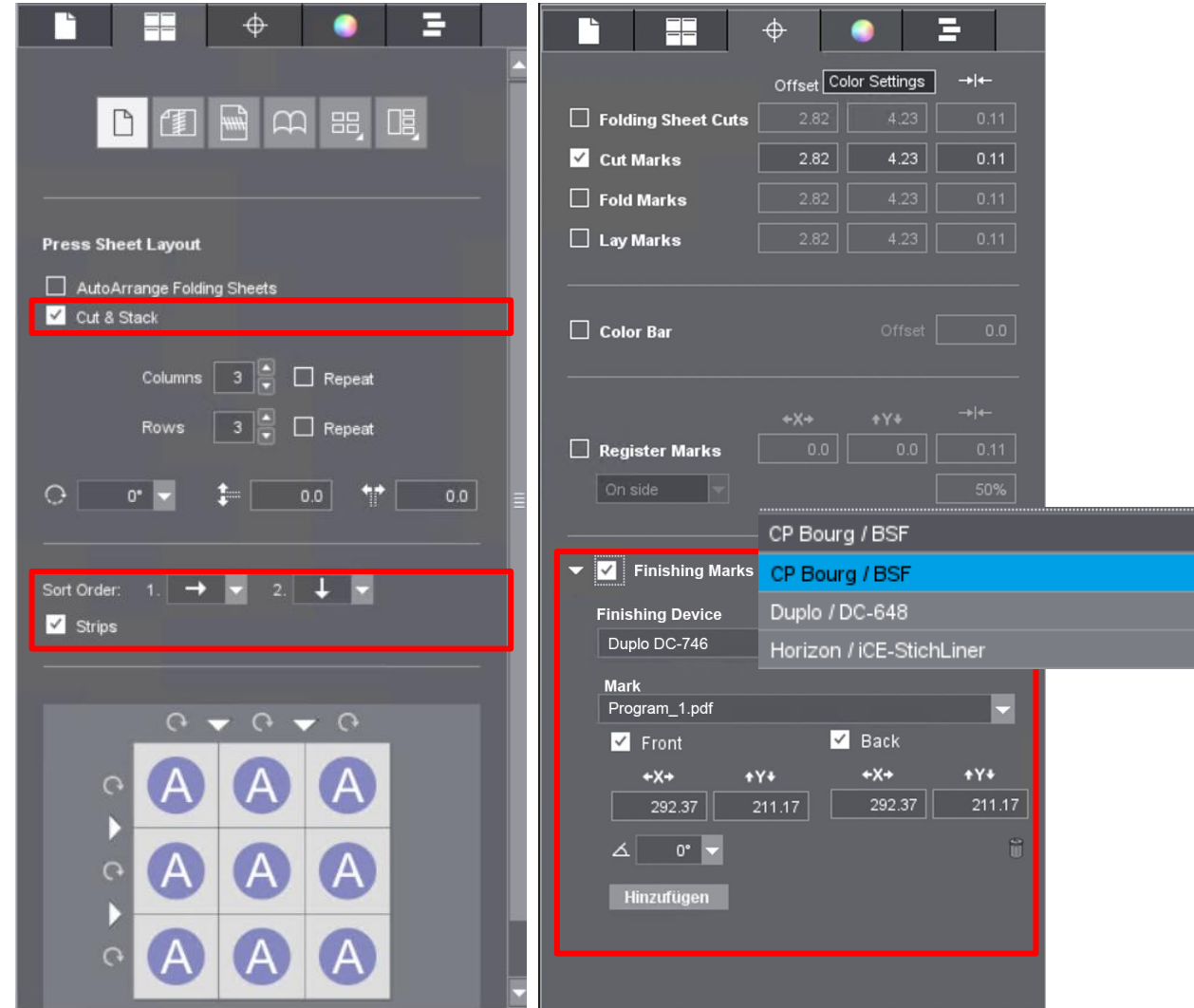
- Stripe layout support for Cut & Stack applications
- Automatic placement of finishing marks and barcodes / QR codes
- Flexible integration of finishing devices via XML configuration and device-specific PDF marks

### Initially Supported Devices

- Duplo DocuCutter 746
- Plockmatic finishing solutions
- C.P. Bourg Booklet Sheet Feeder
- Horizon StitchLiner

### Customer Benefits

- Fast and simple presetting of finishing devices
- Modular approach allows easy addition of further devices
- Finishing configurations can be saved and reused via templates
- Enables fully automated production workflows



# Live show Versafire



- Intro: What's Prinect?
- Overview of Digital Print Manager, DPM
- What's new on Versafire (Toner)
- What's new on Jetfire (Inkjet)
- Summary





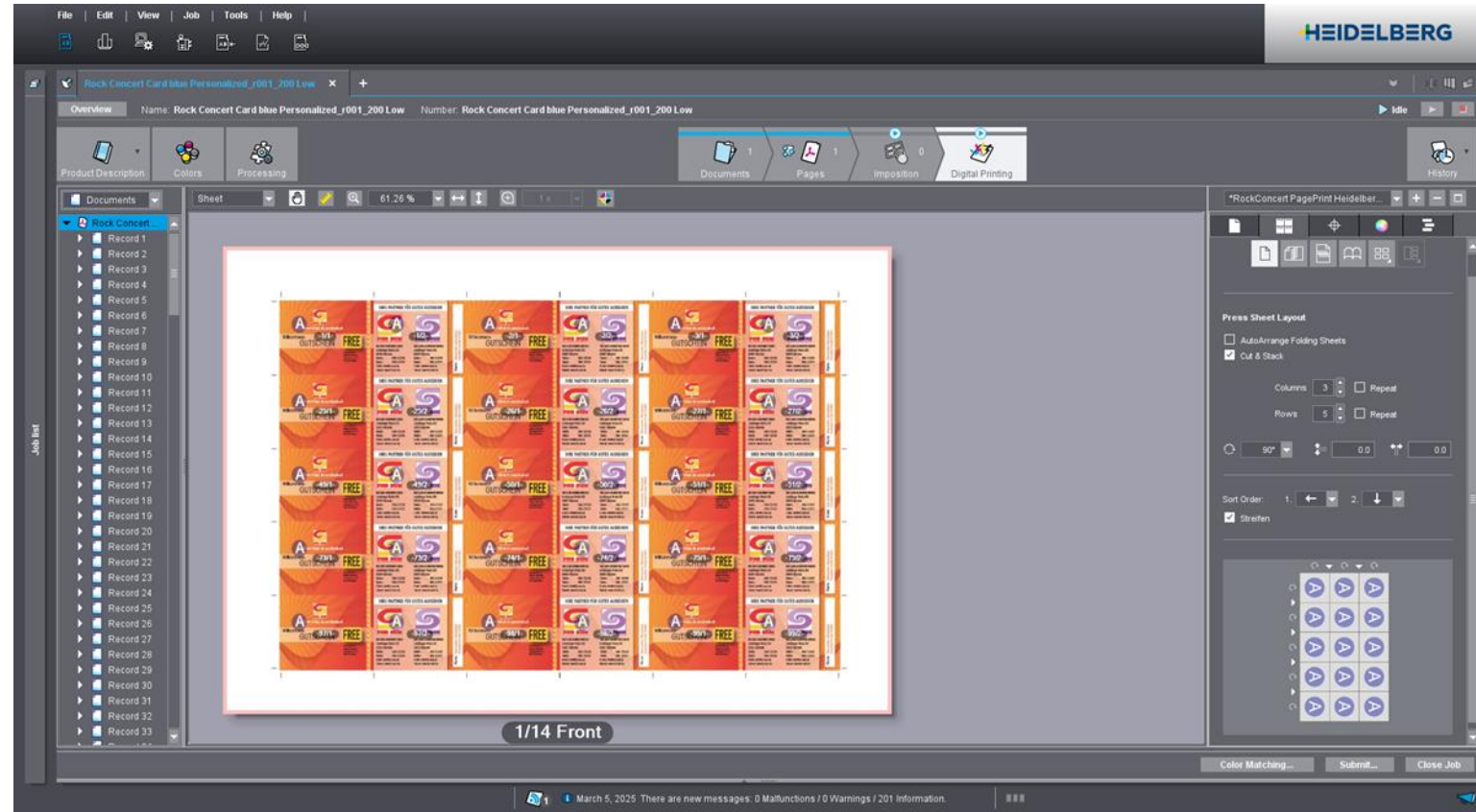
# What's new on Jetfire (Inkjet) Step & Repeat with VDP Job

## Functionality

- Imposition for Cut & Stack applications
- Flexible, WYSIWYG-based sorting options

## Customer Benefits

- Full support for DocuCutter workflows
- Reduced finishing effort — standard operators can handle complex jobs
- No need for a separate imposition solution



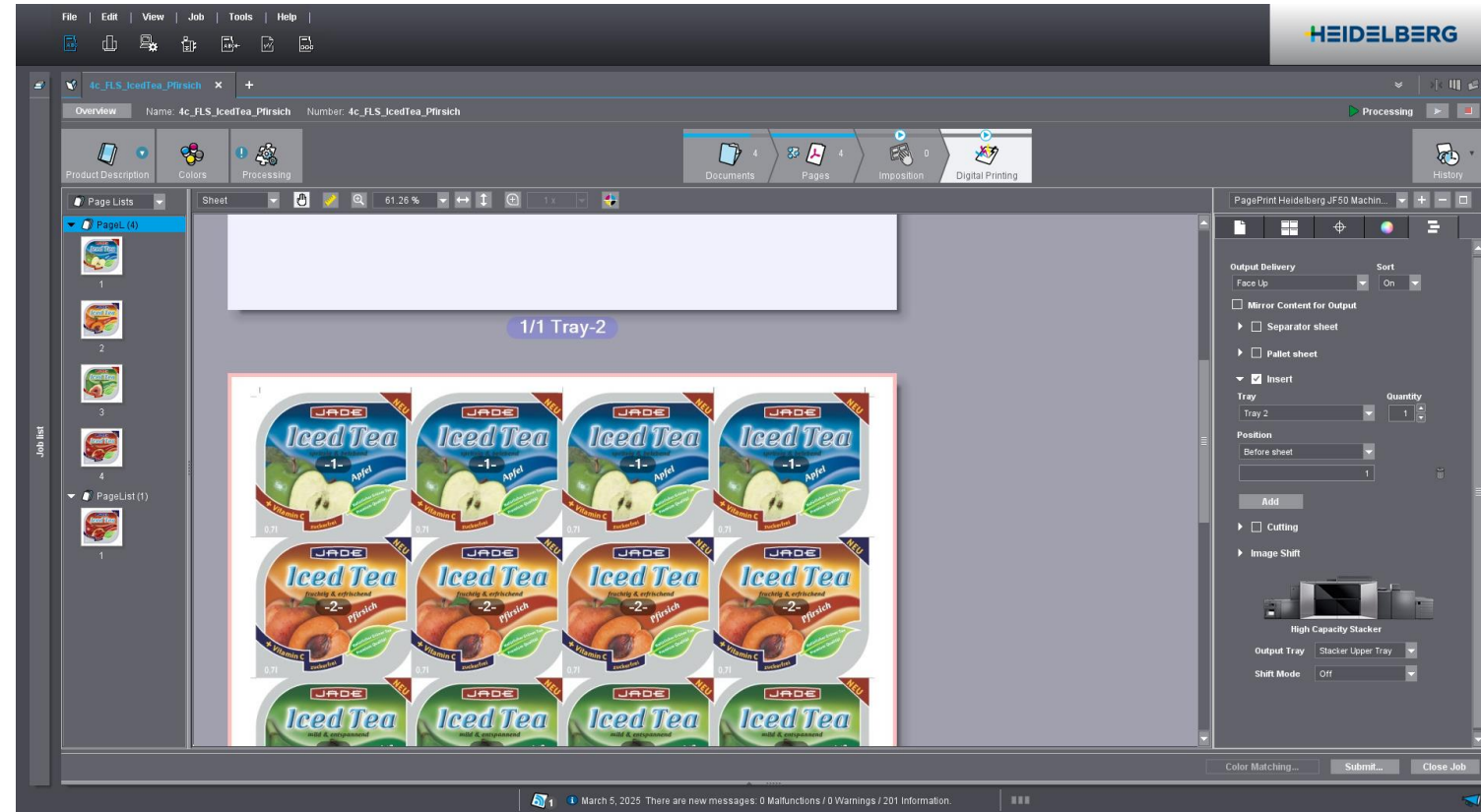
# What's new on Jetfire (Inkjet) Inserting Functionality

## Functionality

- Maximum flexibility for inserting scenarios
- Automatic collation and combination of sheets from different production steps
- Support for hybrid printing workflows

## Customer Benefits

- Fewer manual steps in finishing
- Simple production of mixed media jobs (e.g. offset and digital combined)



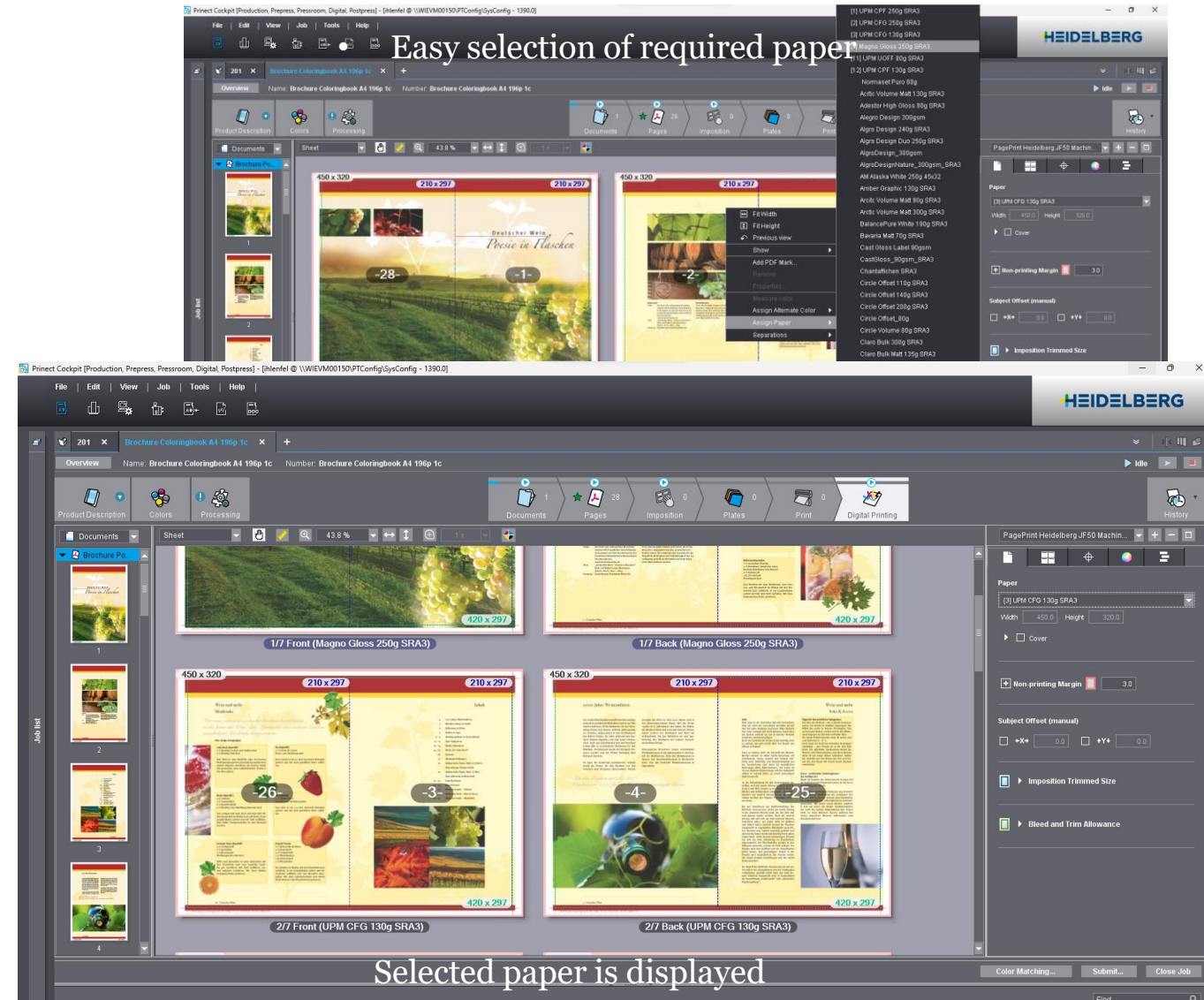
# What's new on Jetfire (Inkjet) Mixed-Media Setting

## Functionality

- Different paper or media can be assigned per page
- Media settings are clearly displayed for each individual page

## Customer Benefits

- Fast and straightforward setup for mixed media jobs
- No second print run required
- Per-page visibility reduces setup time and prevents production errors



# What's new on Jetfire (Inkjet) Maschine Color Settings:

## Functionality

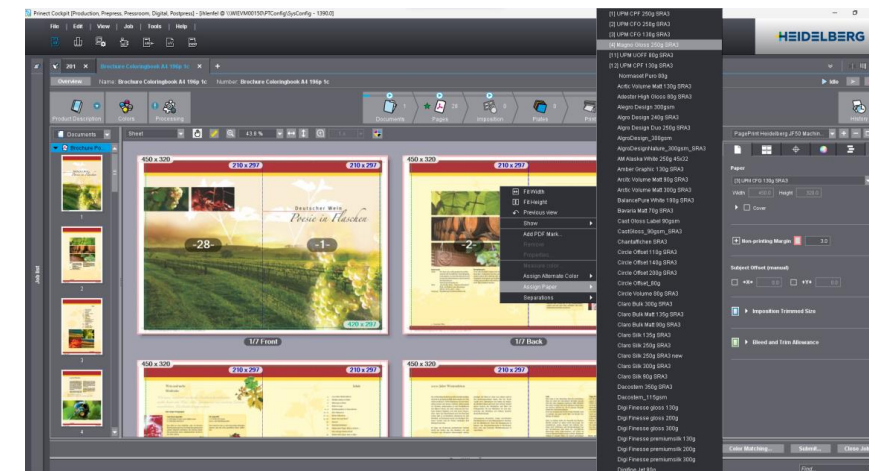
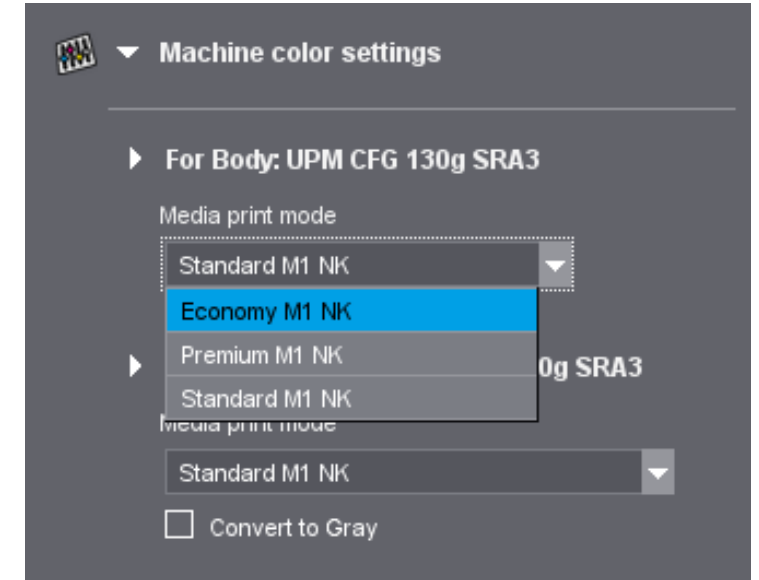
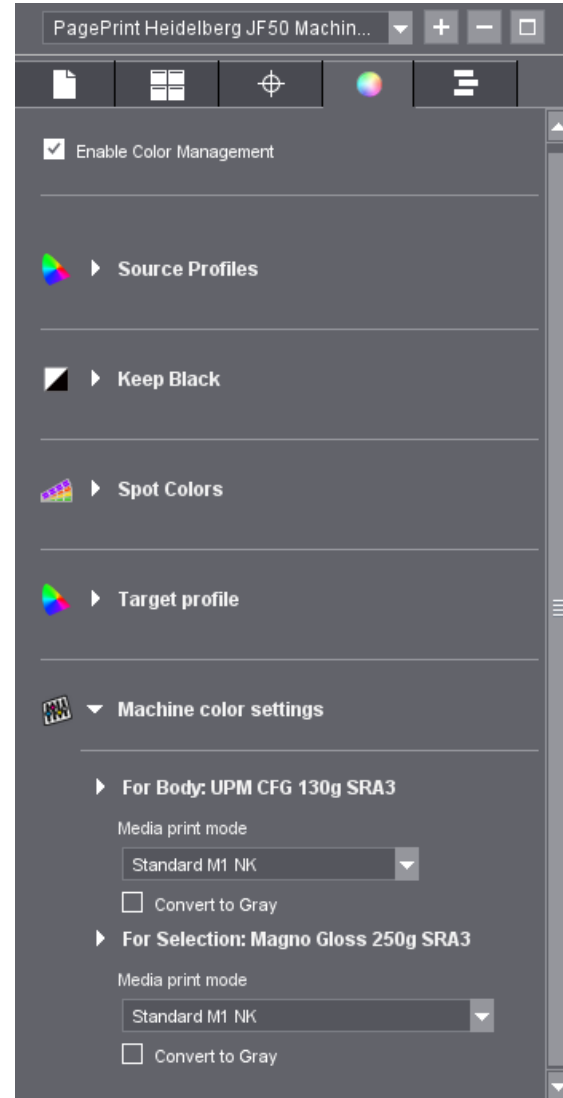
- Media print mode can be defined individually for each paper type
- Optimal color settings can be applied per job

## Customer Benefits

- Best balance between print quality and ink consumption
- Required quality level achieved at the lowest possible cost

## !!Note!!

The Machine Color Settings are ONLY for Jetfire.



# Live show Jetfire



- Intro: What's Prinect?
- Overview of Digital Print Manager, DPM
- What's new on Versafire (Toner)
- What's new on Jetfire (Inkjet)
- Summary



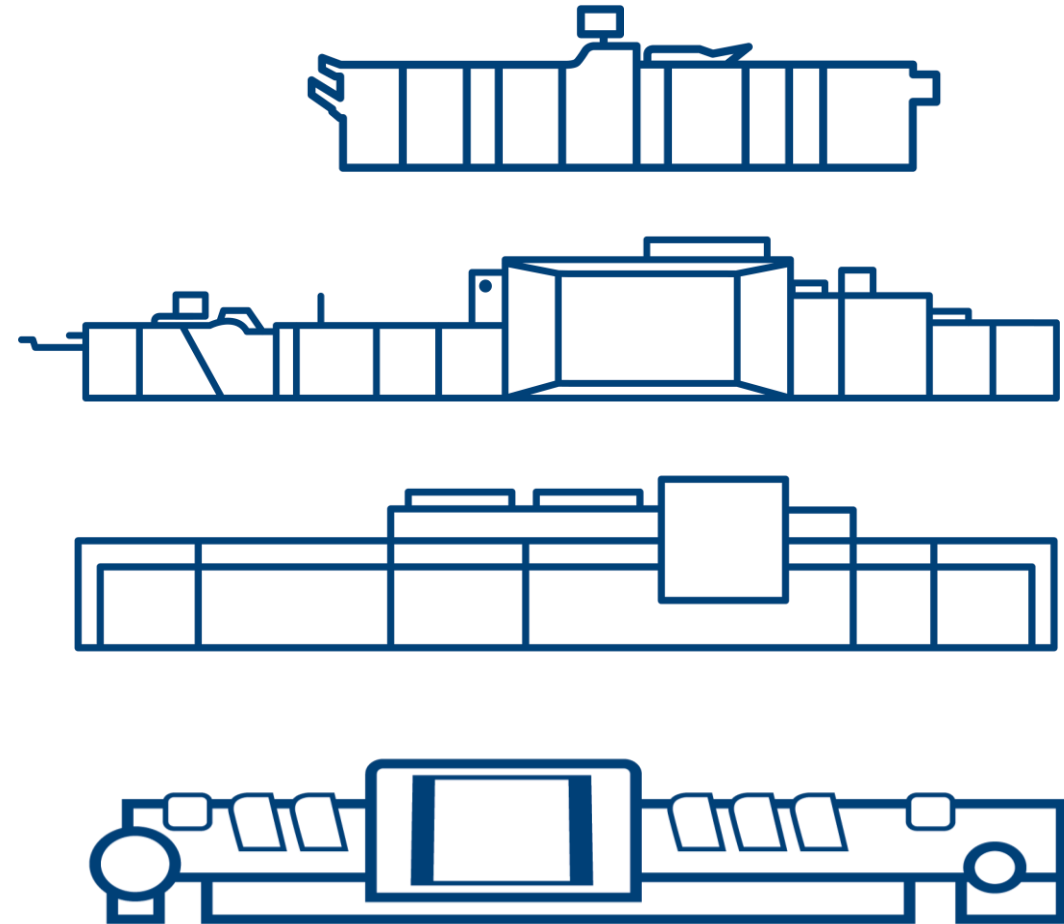
## Summary: End-to-End Production Efficiency with Prinect

- **Integrated imposition and finishing workflows**  
Step & Repeat, inserting, and digital finishing are fully integrated — no external tools required.
- **Flexible support for mixed and hybrid production**  
Mixed media, offset and digital printing can be combined seamlessly within one job.
- **Reduced manual effort and fewer production steps**  
Automation, WYSIWYG control, and smart collation significantly simplify setup and finishing.
- **Consistent quality at optimized cost (Jetfire)**  
Per-media color and print mode settings ensure the required quality with efficient ink usage.
- **Future-proof and scalable finishing integration**  
Modular finishing support allows easy extension as production requirements evolve.

Thank you for your attention, any questions?



**Prinect**





# Kontakt

## **Victoria Yang**

Product Manager Prinect DFE/DPM

Heidelberger Druckmaschinen AG  
Digital Print Ecosystem Product Management  
[victoria.yang@heidelberg.com](mailto:victoria.yang@heidelberg.com)

## **Matthias Langer**

Product manager Digitaldruck

Heidelberger Druckmaschinen Vertrieb Deutschland  
[matthias.langer@heidelberg.com](mailto:matthias.langer@heidelberg.com)