

Automation with Signa Server / Gang Server / Packaging and Signa

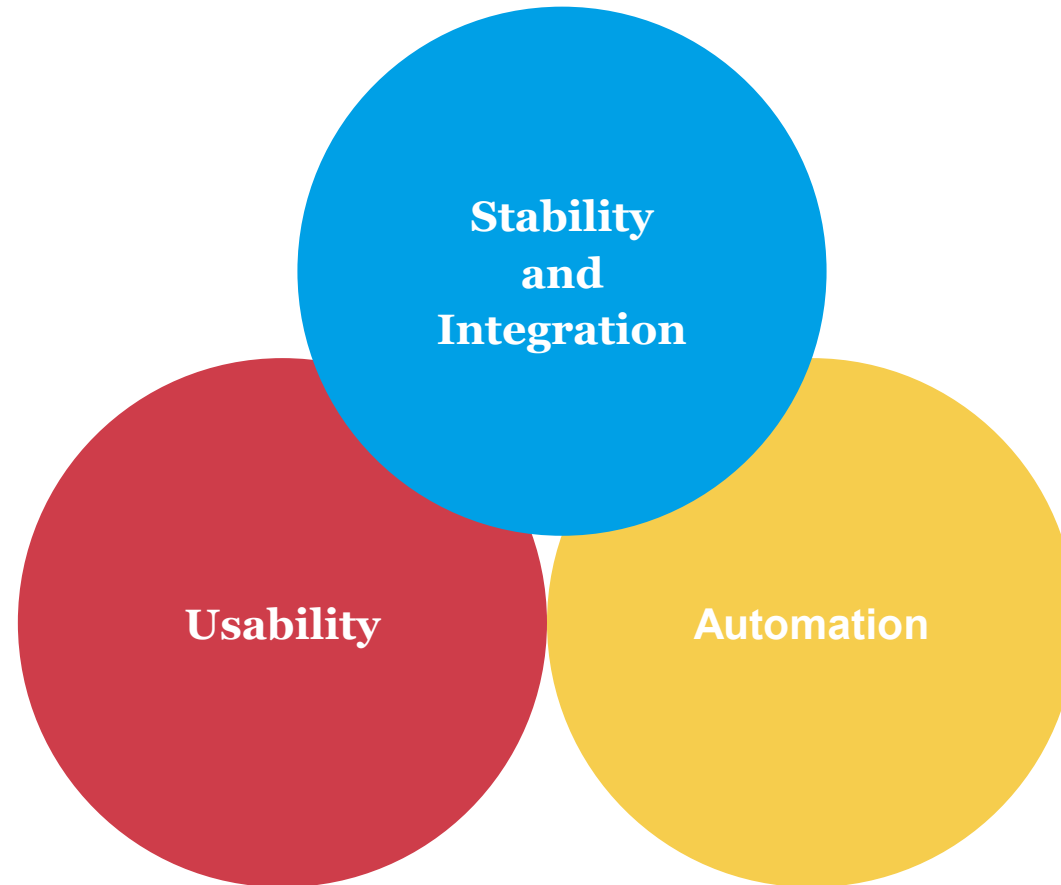
Prinect User Days

Winfried Werner | Donnerstag 15th 16.30 – 17:00

Agenda

1. Updates on Prinect Signa Station
2. Questions & Answers together with Marco Rassfeld from Meinders & Elstermann

Our Fokus



Our Progress

Before

Mediaset 55.00.7 (Signa CR 24485)



After

Mediaset 55.00.12 (Signa CR 25392)



Goal



Stability and Integration

- Support for new operating systems
 - MAC OS – Notarization of Installer and Software
 - MAC OS – Close to full Apple Silicon CPU support
- *Internal automatic quality assurance (Shift-Left)*
- *Modernization of the technical platform*
 - *No Postscript Output anymore*
 - *No marks import with PS / EPS / DCS2*



Internal automatic quality assurance (*Shift-Left*)

Before

- 4000 Autotests ran for 10 hours
- No standardized automatic testing of 3rd software libraries

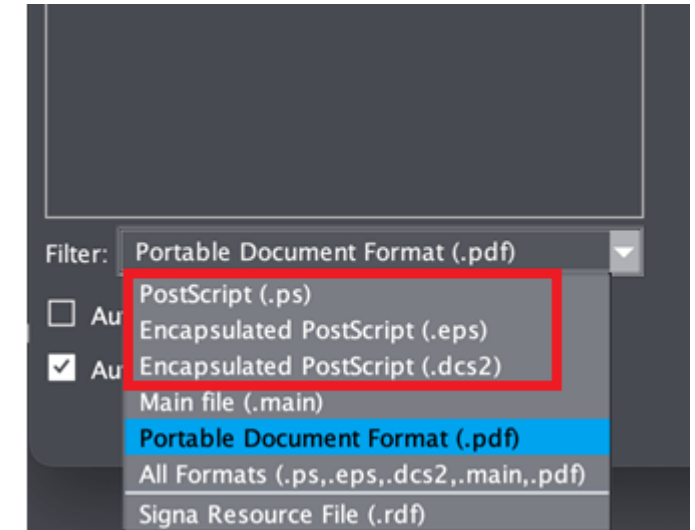
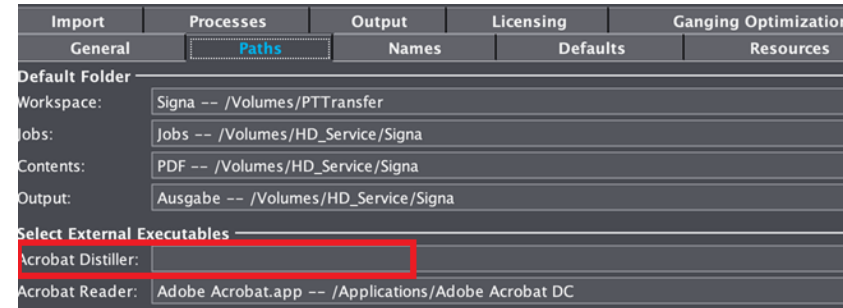
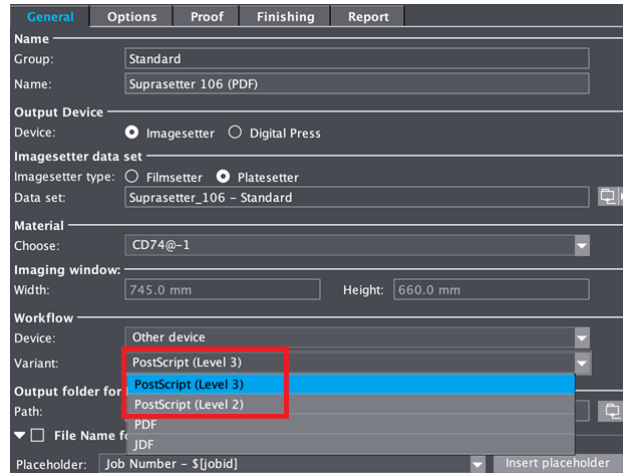
After

- 4000 Autotests ran for 5 hours
- Automatic, daily check of 3rd party software libraries by SBOM (Software Bill of Materials)

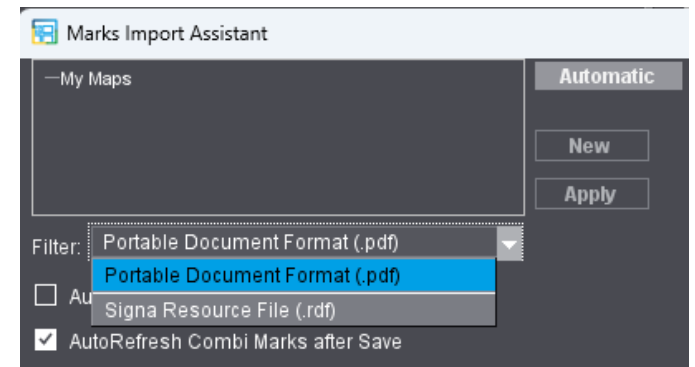
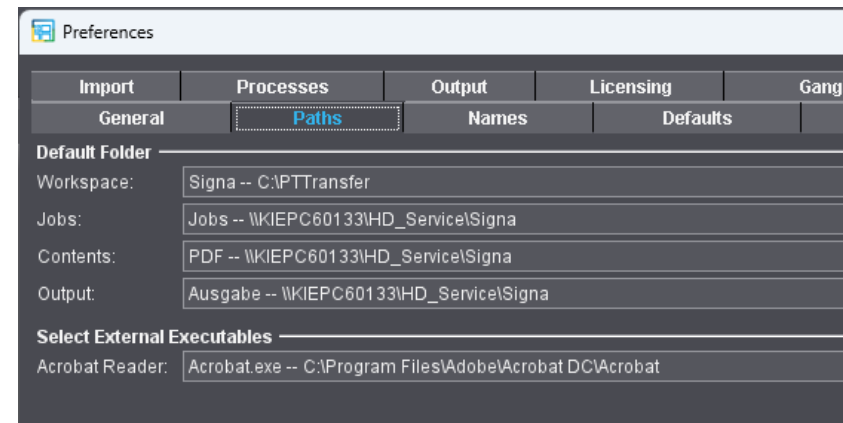
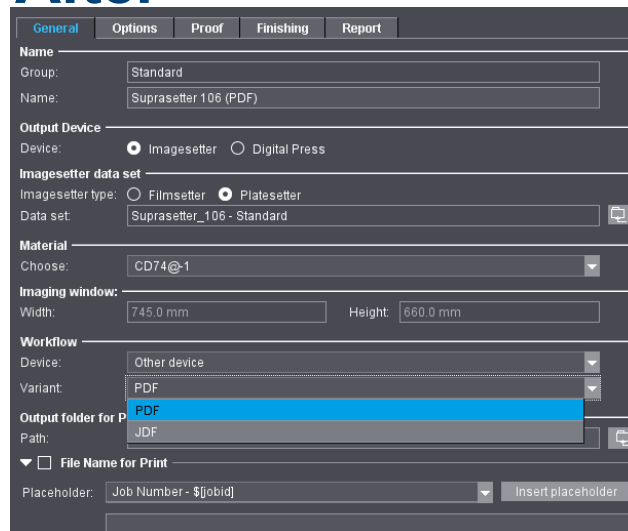


Modernization: No Postscript Output / no Marks Import PS, EPS, DCS2

Before

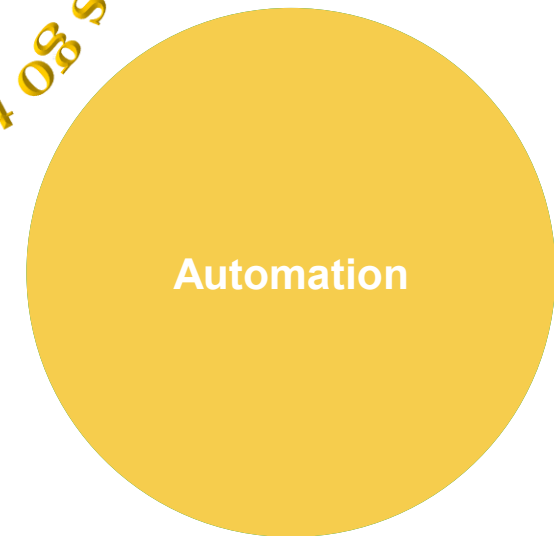


After



Automation

- Performance
 - Size reduction of sdf- and rdf-Files
 - Cache for Product Part Templates Search
- *Min Values for Automatic Gap Computation*
- *Automarks Set Groups in Product Part Templates*
- *New Automarks Rules for Press Sheet Automarks*
- *Bleeds for Front and Back can differ (folding Boxes)*
- *New Automark ,Cover Mark Line type - Glueing‘*



Min Values for Automatic Gap Computation

Before

Import	Processes	Output	Licensing	Ganging Optimization	User Interface	Packaging
General	Paths	Names	Defaults	Resources	Reports	JDF Import
Bleed Default						
Bleed:		3.0 mm		in routing margin:		0.0 mm
Defaults for folding sheet generation						
Routing Margin Min.:		2.0 mm		Max.:		3.0 mm
Max. Head Trim:		5.0 mm		Max. Gap:		10.0 mm
Max. Foot Trim:		5.0 mm		Gap Top Border:		0.0 mm
Min. Gripper Fold Values:		0.0 mm		Max. Gripper Fold Values:		100.0 mm
Paper Thickness Factor:		1.0				

Parameters for Automatic Gap Computation	
<input type="checkbox"/> Automatic Gap Computation	<input type="checkbox"/> Use for JDF Import
<input type="checkbox"/> Routing margin:	3.0 mm
<input type="checkbox"/> Max. Head Trim:	12.0 mm
<input type="checkbox"/> Max. Foot Trim:	3.5 mm
<input type="checkbox"/> Max. Gap:	10.0 mm
Gap Top Border:	0.0 mm

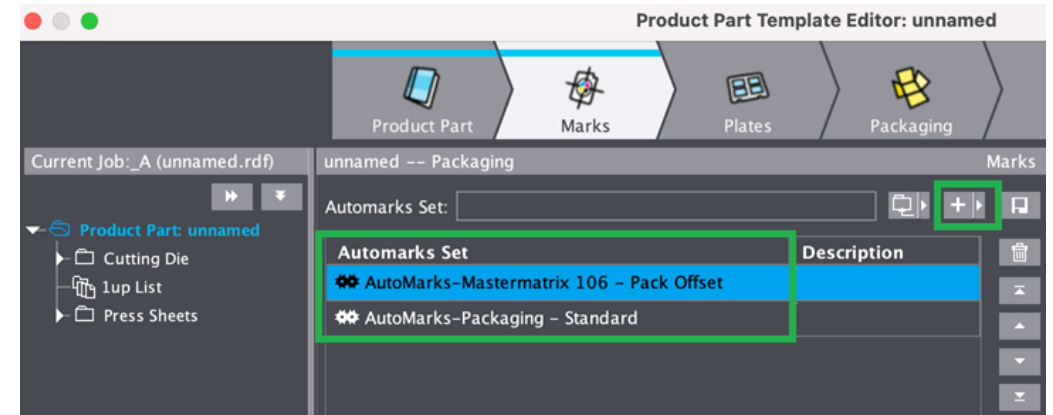
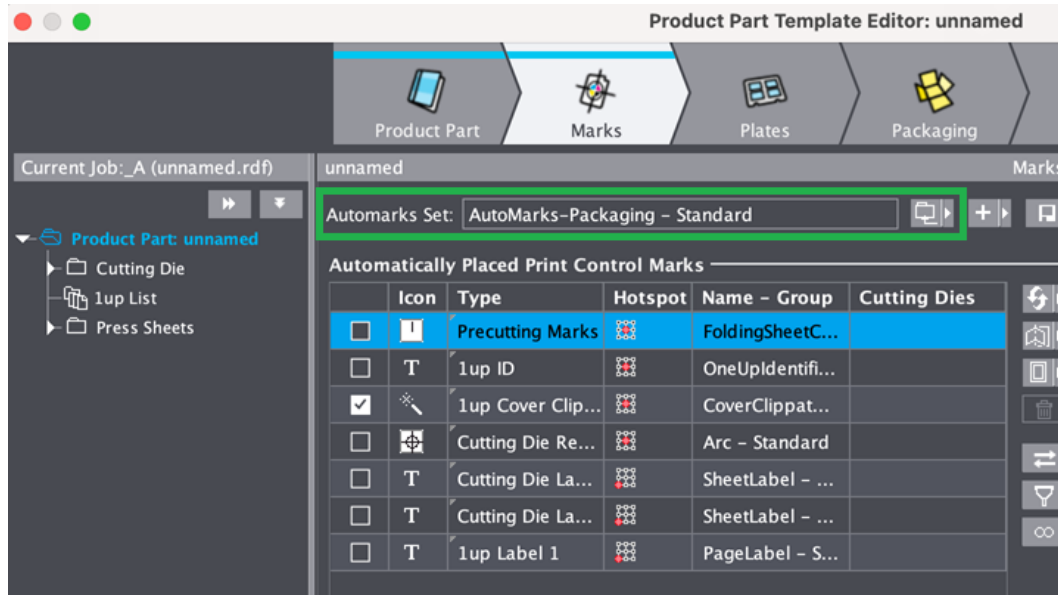
After

Bleed Default			
Bleed:		3.0 mm	
		in routing margin:	
		0.0 mm	
Defaults for folding sheet generation			
Routing Margin Min.:		2.0 mm	
		Max.:	
		3.0 mm	
Min. Head Trim:		5.0 mm	
Min. Foot Trim:		5.0 mm	
Min. Gap:		10.0 mm	
Gap Top Border:		0.0 mm	
Min. Gripper Fold Values:		0.0 mm	
		Max. Gripper Fold Values:	
		100.0 mm	

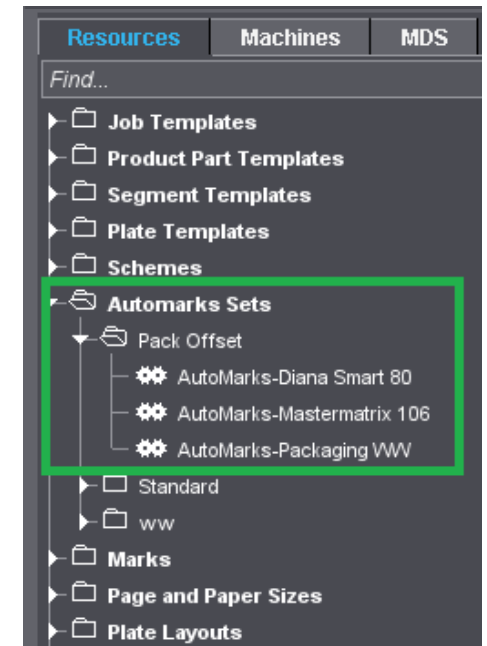
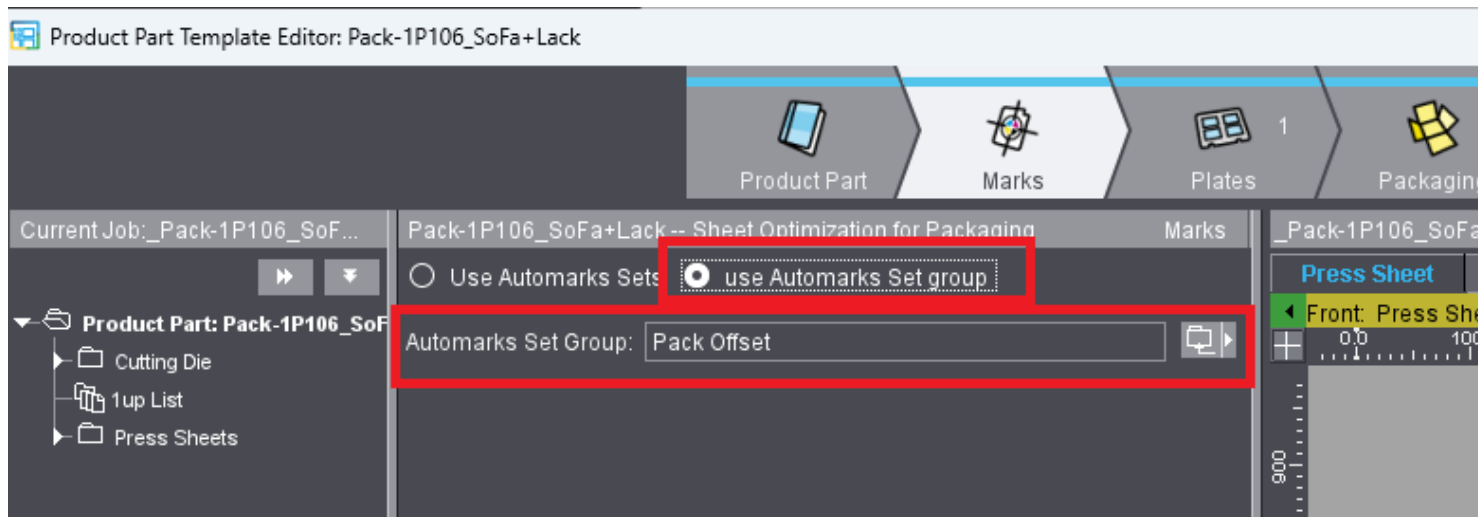
Parameters for Automatic Gap Computation	
<input checked="" type="checkbox"/> Automatic Gap Computation	<input type="checkbox"/> Use for JDF Import
<input type="checkbox"/> Routing margin:	3.0 mm
<input type="checkbox"/> Min. Head Trim:	2.0 mm
<input type="checkbox"/> Min. Foot Trim:	2.0 mm
<input checked="" type="checkbox"/> Min. Gap:	2.0 mm
<input type="checkbox"/> Max. Head Trim:	10.0 mm
<input type="checkbox"/> Max. Foot Trim:	10.0 mm
<input checked="" type="checkbox"/> Max. Gap:	10.0 mm
Gap Top Border:	0.0 mm

Automarks Set Groups in Product Part Templates

Before



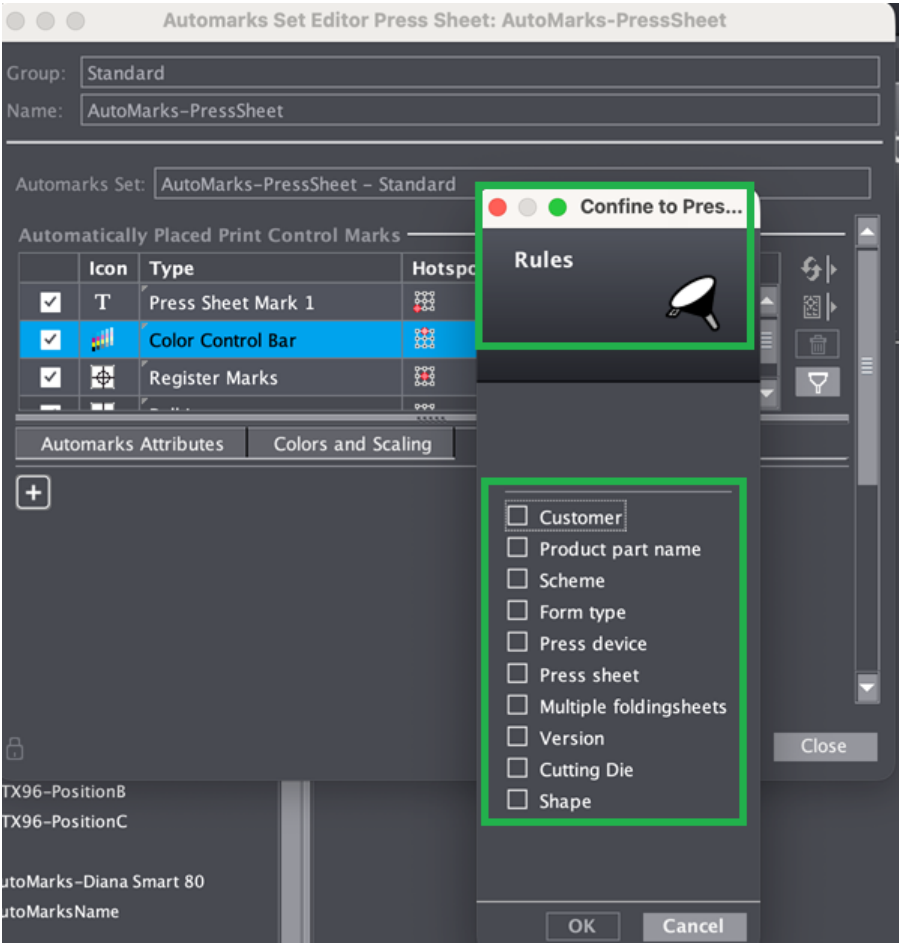
After



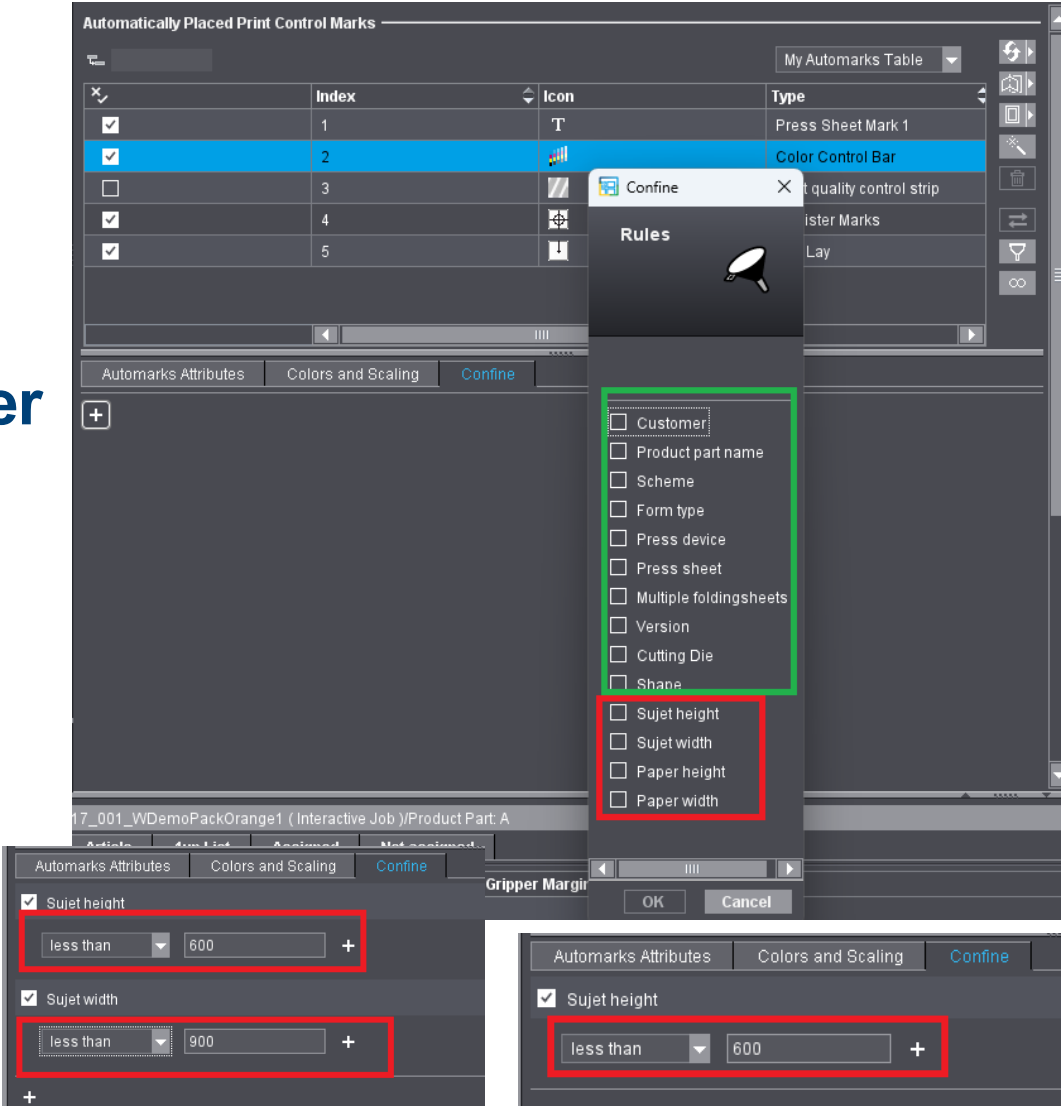
New Automarks Rules for Press Sheet Automarks

Different marks such as the MicroDCB color bar must be placed depending on the sujet or paper dimensions.

Before



After



Bleeds for Front and Back can differ (folding Boxes)

Only for front and back printing.
Here Front=Back

Job

Product Part

Marks

Plates 1

Packaging 1

Article

Contents 1

Output 1

Press Sheet

WDemoPackOrange1 / WDemoPackOrange1_20250617_001_WDemoPackOrange1 (Interactive Job) / Product Part: A

Graphics

Cutting Die and Main Settings

Cutting Die	Tool	Format	Press Sheet
DieVeniceOrange1.1.cf2 (0)	DieVeniceOrange1.1	934.5 mm x 704.0 mm	Press Sheet 1 1: SM 102 - Standard (Sheetwise)

Bleed

Line Type for Bleed: 92

Assembly Block Parameters

☒ Same content for all 1ups of a shape

Orientation: ☒ 0° ☐ 90° ☐ 180° ☐ 270°

Position X: -7.25 mm

Y: 10.0 mm

☒ automatic

Margin left: 0.0 mm

right: 0.0 mm

Margin bottom: 0.0 mm

top: 0.0 mm

Shape List

Shape	Format	1up	Folding type	Bleed
V04	311.5 mm x 282.0 mm	9 (1 - 2)	No	<div><div></div><div>Bleeds are identical for front and back</div></div>

Press Sheet

Cutting Die

1 up List

Press Sheet List

Document

Front: FB001 (Sheetwise (front and back))

Back: FB001 (Sheetwise (front and back))

shampoo Orange-Press_U...(1)

shampoo Orange-Press_U...(1)

shampoo Orange-Press_U...(1)

shampoo Orange-Press_U...(1)

shampoo Orange-Press_U...(1)

shampoo Orange-Press_U...(1)

shampoo Orange-Press_U...(1)

shampoo Orange-Press_U...(1)

shampoo Orange-Press_U...(1)

shampoo Orange-Press_U...(1)

shampoo Orange-Press_U...(1)

shampoo Orange-Press_U...(1)

No Page Assignment

No Page Assignment

No Page Assignment

No Page Assignment

No Page Assignment

No Page Assignment

No Page Assignment

No Page Assignment

No Page Assignment

No Page Assignment

No Page Assignment

No Page Assignment

21.01.2026 | Prinect User Days 2026

12

Bleeds for Front and Back can differ (folding Boxes)

Only for front and back printing with f.i. glue flaps

Here Front != Back

Cutting Die File and Main Settings

Cutting Die	Tool	Format	Press Sheet
DieVeniceOrange1.1.cf2 (0)	DieVeniceOrange1.1	934.5 mm x 704.0 mm	Press Sheet 1 1: SM 102 - Standard (Perfecting)

Bleed

Line Type for Bleed: 92

Assembly Block Parameters

☒ Same content for all 1ups of a shape

Orientation: ☒ 0° ☐ 90° ☐ 180° ☐ 270°

Position X: 32.75 mm Y: 10.0 mm ☒ automatic

Margin left: 0.0 mm right: 0.0 mm

Margin bottom: 0.0 mm top: 0.0 mm

Shape List

Shape	Format	1up	Folding type	Bleed
V04	311.5 mm x 282.0 mm	9 (1 - 2)	No	<input checked="" type="checkbox"/> <input type="checkbox"/>

Bleeds for front and back can differ

Press Sheet

Cutting Die

1up List

Press Sheet List

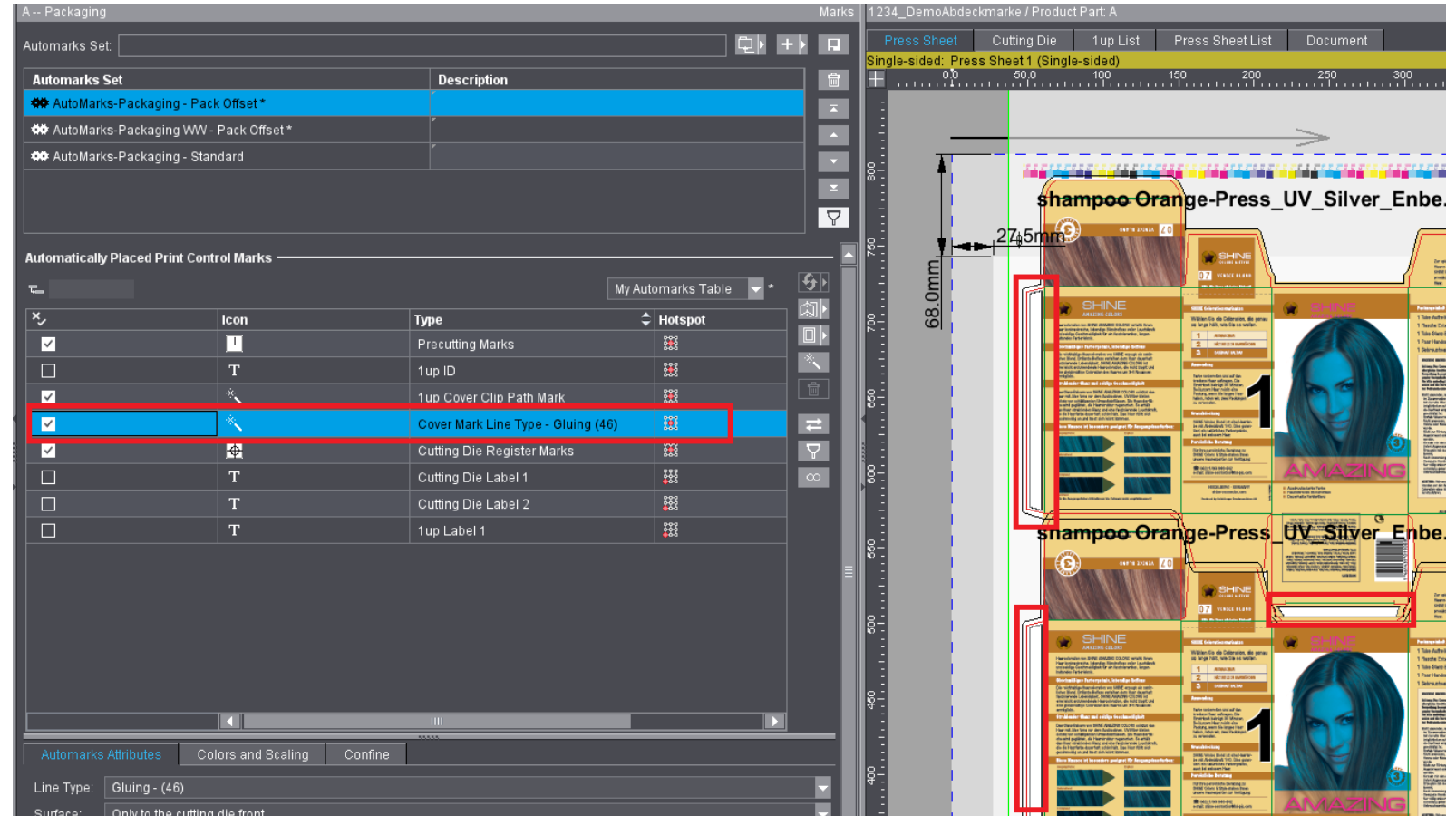
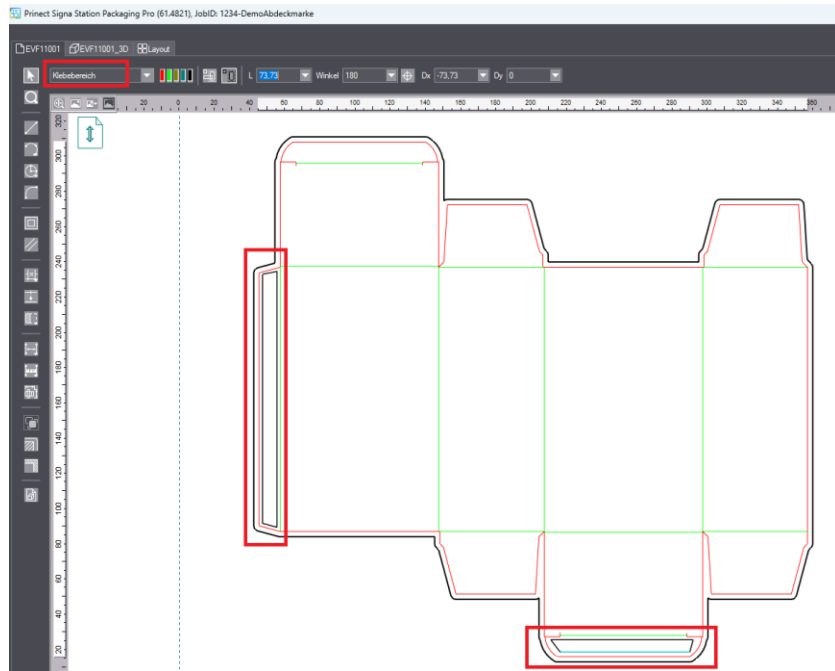
Document

Front: FB001 (Perfecting)

Back: FB001 (Perfecting)

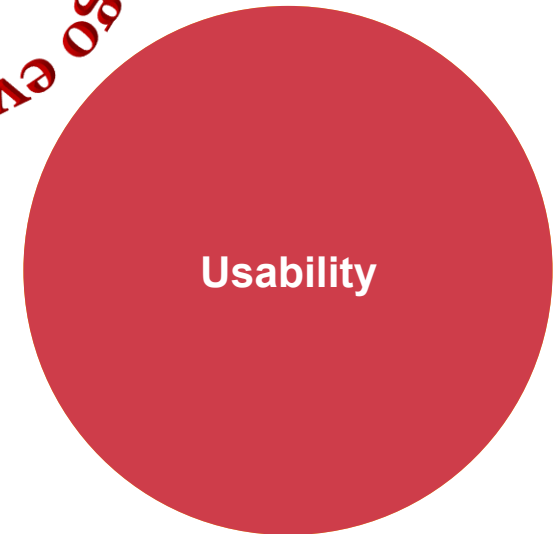
New Automark ,Cover Mark Line type - Glueing‘

Cover Marks are created automatically by closed Line type Gluing (46) coming f.i. from CF2



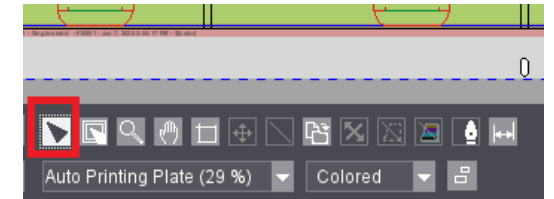
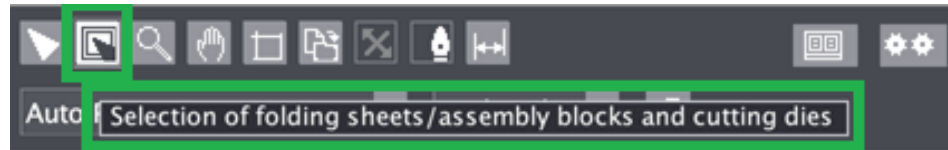
Usability

- *Tool for shifting marks as well as folding sheets*
- *Remember last selected tool*
- *Marks TOV with now with Grouping Table*
- *Duplicate Cutting Die*
- *1up copies with Copy/Paste keyboard shortcuts*

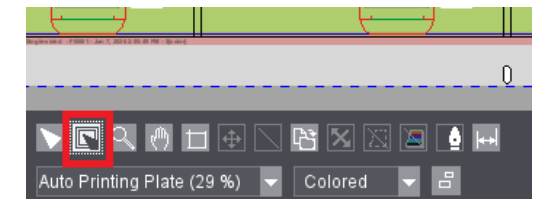
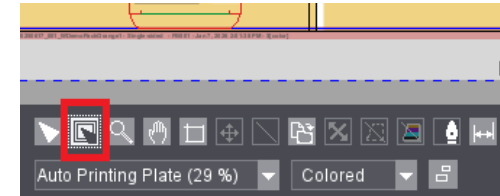
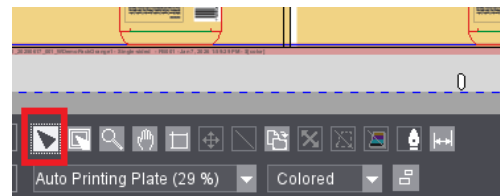


Tool for shifting marks as well as folding sheets & Remember last selected tool

Before



After



All tools that can be accessed without selection are remembered at runtime. All other tools revert to the tool on the far left as before (only with Mediaset 13).

Marks TOV with now with Grouping Table

Before

Automarks Set: XL_105 - Jobintern *

Automatically Placed Print Control Marks

	Icon	Type	Hotspot	Name - Group	Folding Sheets
<input checked="" type="checkbox"/>		Cut Marks		CutMark - Sta...	1,2,3,4,5
<input type="checkbox"/>	T	Collating Marks		Flattermarke_...	
<input checked="" type="checkbox"/>		Fold Marks		FoldingMark_k...	1,2,3,4,5
<input checked="" type="checkbox"/>		Folding Crosses		Falzkreuz_3m...	1,2,3,4,5
<input checked="" type="checkbox"/>		Folding Sheet ...		FoldingSheetC...	1,2,3,4,5
<input type="checkbox"/>		Fold Lay Mark		SheetLay - Sta...	
<input type="checkbox"/>	T	1up ID		OneUpIdentifie...	
<input type="checkbox"/>		1up Cover Cli...		CoverClippath ...	

After

A -- Packaging

Automarks Set: AutoMarks-PressSheet - Standard

Automatically Placed Print Control Marks

	Index	Icon	Type
<input checked="" type="checkbox"/>	1	T	Press Sheet Mark 1
<input checked="" type="checkbox"/>	2		Color Control Bar
<input type="checkbox"/>	3		Print quality control strip
<input checked="" type="checkbox"/>	4		Register Marks
<input checked="" type="checkbox"/>	5		Pull Lay

My Automarks Table

New “Index” column to return to the original sorting order (function and “Index” column only available with Mediaset 13)

Duplicate Cutting Die

1) Job and cutting die for 102er format is available

The screenshot displays the Heidelberg software interface, specifically the 'Plates' tab. The top navigation bar includes icons for Job, Product Part, Marks, Plates, Packaging, Article, Contents, and Output. The 'Plates' tab is active, showing a list of selected plate templates on the left and a grid of 12 cutting die templates on the right.

Plate Template and Paper

List of Selected Plate Templates

- 1: SM 102 - Standard (Single-sided)

Attributes

Selected Plate Template

Width: 1030.0 Height: 790.0

Placement rule for perfecting

Work Style: Single-sided

Paper Definition for Production

Name: WWs XL 102 Gloss 120 g ShortGrain@0815_120_SG ☐ Keep Dimension

☐ Multiple Web Widths Web 1

Width: 920.0 mm Height: 650.0 mm

Grammage: 120.0 Thickness: 0.12 mm

☐ Automatic Paper Height Reduction

Subject Settings

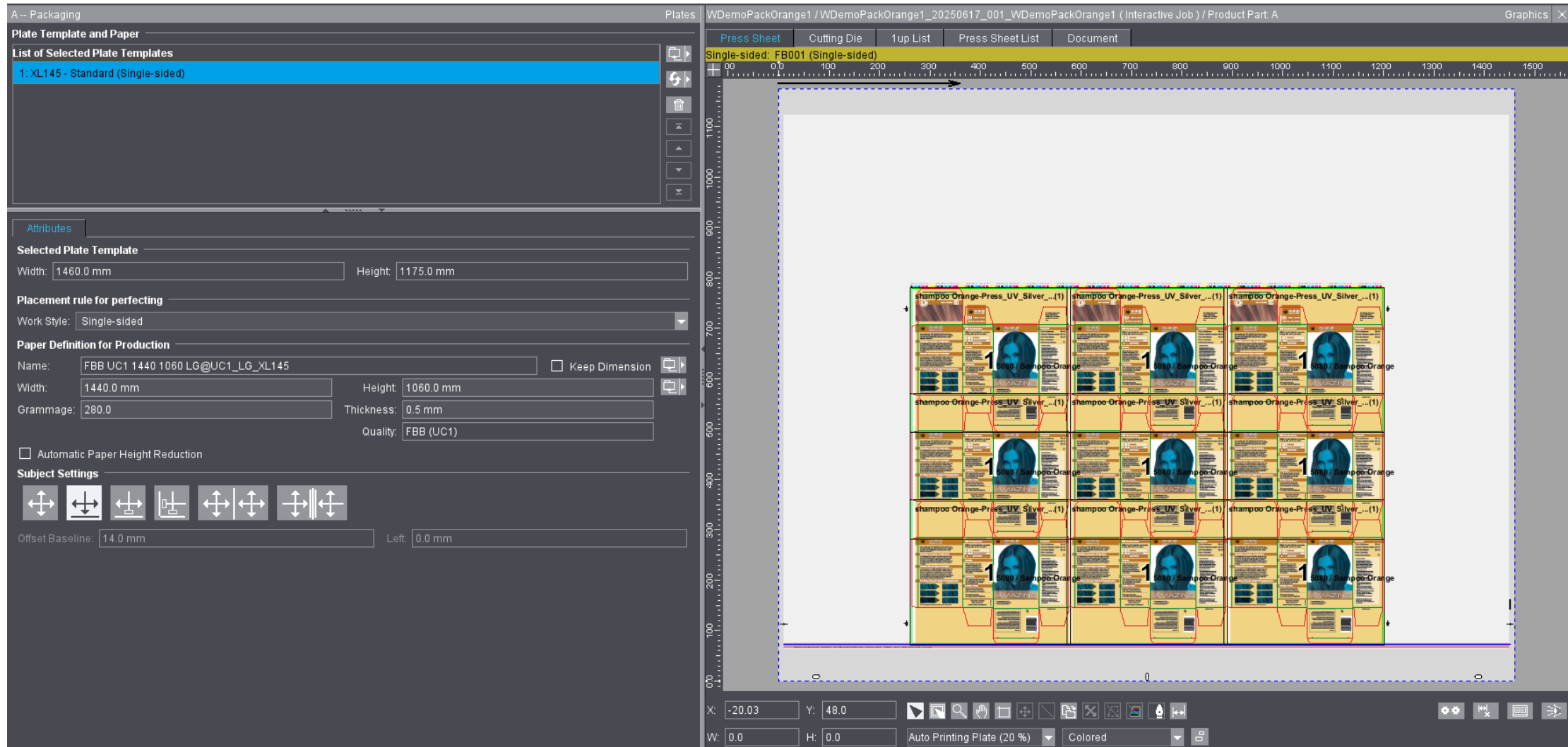
Offset Baseline: 13.0 mm Left: 0.0 mm

The main workspace shows a grid of 12 cutting die templates, arranged in 4 rows and 3 columns. Each template is labeled 'shampoo Orange-Press UV Silver Enbed...(1)' and features a central image of a person's face. The templates are overlaid on a grid with dimensions ranging from 0 to 1050 on the x-axis and 0 to 800 on the y-axis. A vertical arrow points to the first column of templates.

At the bottom, there are input fields for X, Y, W, and H coordinates, and a section for 'Auto Printing Plate (29 %)' with a 'Colored' dropdown menu.

Duplicate Cutting Die

2) Change Plate Template and Paper for 145er formate



Duplicate Cutting Die

3) Rotate Cutting Die and use new function Duplicate Cutting Die

A -- Packaging Packaging WDemoPackOrange1 / WDemoPackOrange1_20250617_001_WDemoPackOrange1 (Interactive Job) / Product Part: A Graphics

Press Sheet Cutting Die 1up List Press Sheet List Document

Single-sided: FB001 (Single-sided)

Cutting Die	Tool	Format	Press Sheet
DieVeniceOrange1.1.cf2 (0)	DieVeniceOrange1.1	934.5 mm x 704.0 mm	Press Sheet 1 1: XL145 - Standard (Single-sided)

Duplicate Cutting Die

New Press Sheet

Press Sheet 1

No Press Sheet

Bleed

Line Type for Bleed: 92

Assembly Block Parameters

☒ Same content for all 1ups of a shape

Orientation: ☐ 0° ☒ 90° ☐ 180° ☐ 270°

Position X: 4.72 mm Y: 97.91 mm ☐ automatic

Margin left: 0.0 mm right: 0.0 mm

Margin bottom: 0.0 mm top: 0.0 mm

Shape List

Shape	Format	1up	Folding type
V04	311.5 mm x 282.0 mm	9 (1 - 1)	No

☒ Create PDF 3D for Every 1up

Placement rule for assigned 1ups

☒ Automatic (Center) ☐ By user (view options)

X: -20.03 Y: 1170.88

W: 0.0 H: 0.0

Auto Printing Plate (20 %) Colored

Duplicate Cutting Die

4) Cutting Die is now easily duplicated for 145er formate

A -- Packaging

Packaging

WDemoPackOrange1 / WDemoPackOrange1_20250617_001_WDemoPackOrange1 (Interactive Job) / Product Part: A

Graphics

Press Sheet

Cutting Die

1up List

Press Sheet List

Document

Single-sided: FB001 (Single-sided)

00 00 100 200 300 400 500 600 700 800 900 1000 1100 1200 1300 1400 1500

Cutting Die File and Main Settings

Cutting Die	Tool	Format	Press Sheet
DieVeniceOrange1.1.cf2 (0)	DieVeniceOrange1.1	934.5 mm x 704.0 mm	Press Sheet 1 1: XL145 - Standard (Single-side
DieVeniceOrange1.1.cf2 (1)	DieVeniceOrange1.1	934.5 mm x 704.0 mm	Press Sheet 1 1: XL145 - Standard (Single-side

Bleed

Line Type for Bleed: 92

Assembly Block Parameters

☒ Same content for all 1ups of a shape

Orientation: ☐ 0° ☒ 90° ☐ 180° ☐ 270°

Position X: 726.07 mm Y: 97.91 mm ☐ automatic

Margin left: 0.0 mm right: 0.0 mm

Margin bottom: 0.0 mm top: 0.0 mm

Shape List

Shape	Format	1up	Folding type
V04	311.5 mm x 282.0 mm	9 (2 - 2)	No

☒ Create PDF 3D for Every 1up

Placement rule for assigned 1ups

☒ Automatic (Center) ☐ By user (view options)

0 0 100 200 300 400 500 600 700 800 900 1000 1100 1200 1300 1400 1500

shampoo Orange-Press-UV_Silver_... (1)

shampoo Orange-Press-UV_Silver_... (1)

shampoo Orange-Press-UV_Silver_... (1)

shampoo Orange-Press-UV_Silver_... (1)

shampoo Orange-Press-UV_Silver_... (1)

shampoo Orange-Press-UV_Silver_... (1)

shampoo Orange-Press-UV_Silver_... (1)

shampoo Orange-Press-UV_Silver_... (1)

shampoo Orange-Press-UV_Silver_... (1)

No Page Assignment

2

No Page Assignment

2

No Page Assignment

2

No Page Assignment

2

No Page Assignment

2

X: 706.53 Y: -11.1

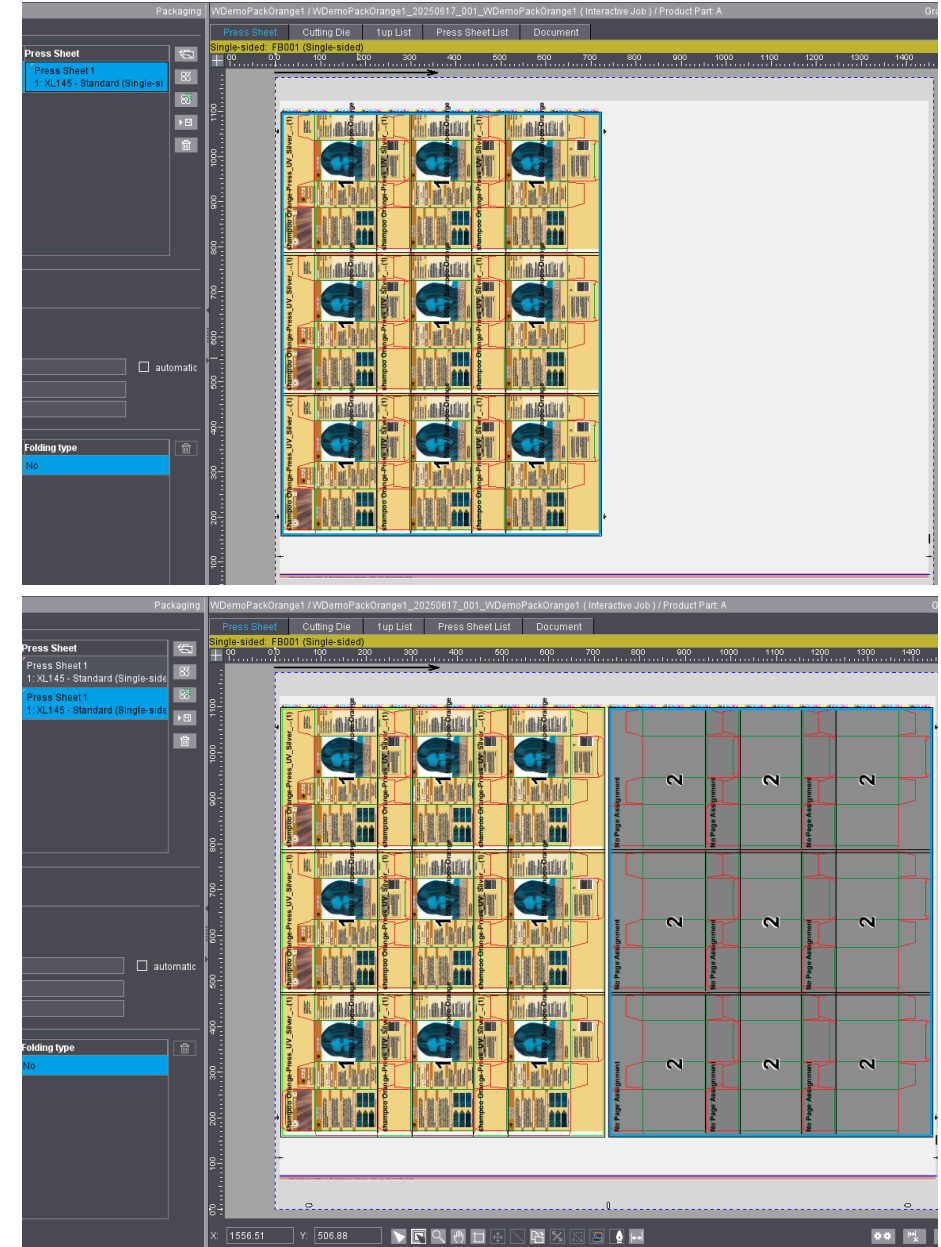
W: 0.0 H: 0.0

Auto Printing Plate (20 %)

Colored

1up copies with Copy/Paste keyboard shortcuts (Only Keyboard not in menu !!)

- Assembly blocks can be copied using CTRL-C and CTRL-V (even with multiple selections)
- Cutting Dies can be copied using CTRL-C and CTRL-V (even with multiple selections). What we have just achieved by duplicating the die cut can also be achieved with CTRL-C / CTRL-V.
- Sheet Optimization without Layout can be copied using CTRL-C, CTRL-X and CTRL-V
- Works on MAC too



Marco Rassfeld from Meinders & Elstermann

Introduction Marco Rassfeld | Meinders & Elstermann

- Lead Prepress | Production | IT
- Management of digital processes
- Medienfachwirt
- Implementation of full JDF integration [2018]
- Administrator Prinect-Systeme
- several field tests with HEIDELBERG
- With the company for over 25 years
- Traditional, full-service printing company
- more than 140 years of tradition
- 3 locations [Belm, Saerbeck, Oldenburg]
- Over 250 employees



MEINDERS & ELSTERMANN

Questions?

LET'S
CONNECT

■■■■ PRINECT ■■■
USER DAYS