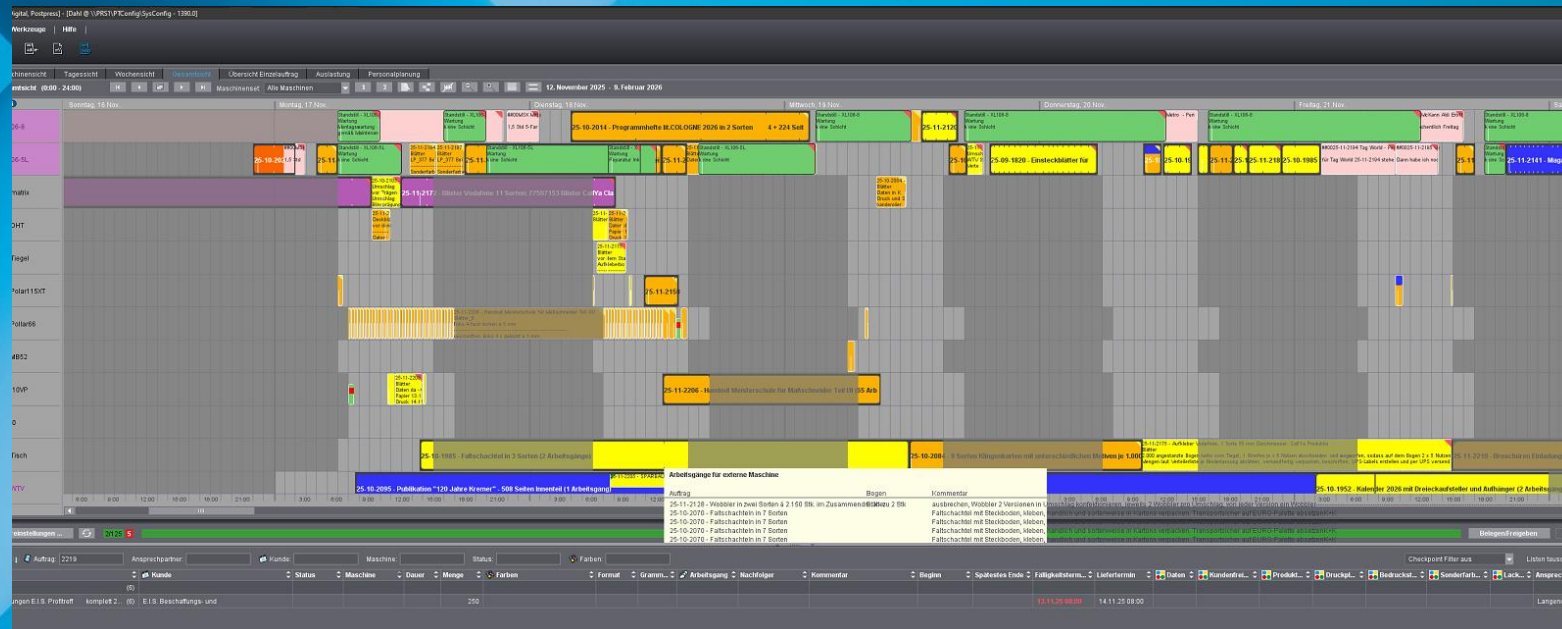


Planning workshop

Prinect User Days 2026

Dirk Puslat, Druckstudio, and René Schieber, Heidelberg | Heidelberg, 15.1.2026



Agenda

1. Introduction to scheduling
2. Sequence planning with Prinect Portal
3. Application of Prinect Scheduler at Druckstudio
4. Self-programmed Status-Live-board via API of Druckstudio
5. Plate production via Plate Pilot at Druckstudio
6. Questions

Agenda

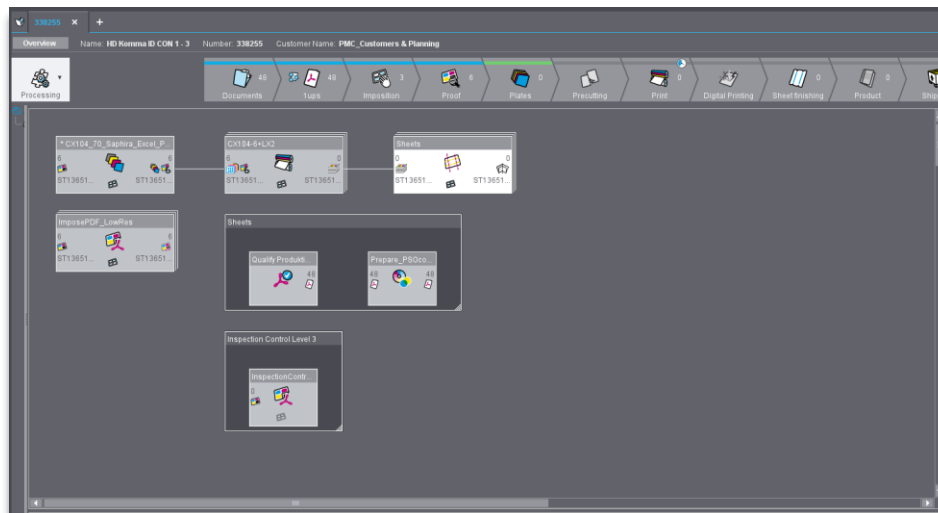
- 1. Introduction to scheduling**
2. Sequence planning with Prinect Portal
3. Application of Prinect Scheduler at Druckstudio
4. Self-programmed Status-Live-board via API of Druckstudio
5. Plate production via Plate Pilot at Druckstudio
6. Questions

Planning – What do we mean

Job planning

Breaking down a job into operations for the optimal production route using available resources:

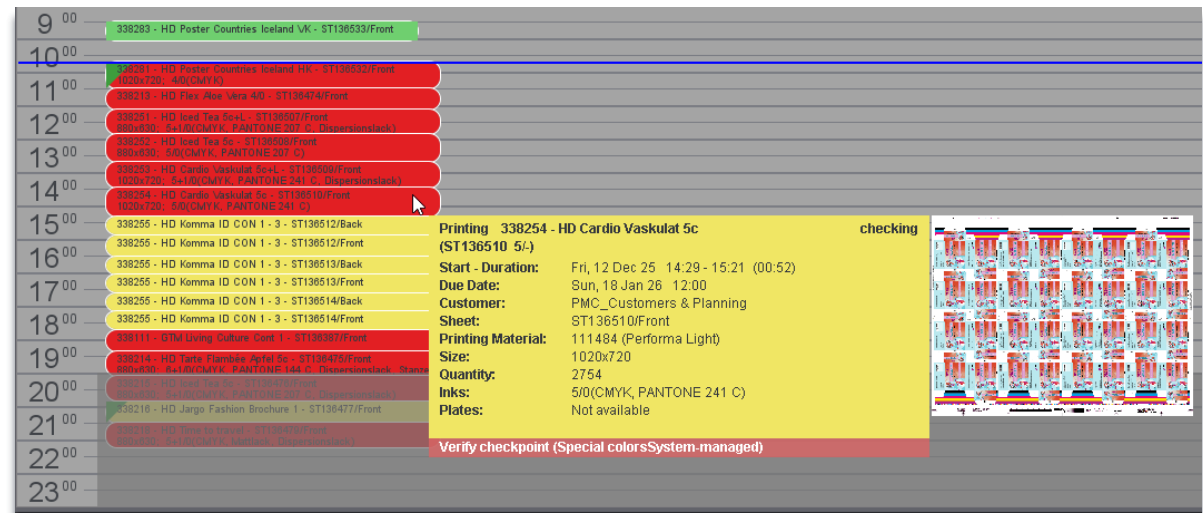
- ✓ Cost
- ✓ Production lead time
- ✓ Capacity



Planning of work station

Assigning operations to a workstation or equipment in an optimal sequence:

- ✓ Make ready time reduction
- ✓ Shifts and capacity



Most common types of automation and planning

E H E

Email

Hotfolder

Excel

How is planning done?

1. Manual
2. Pin boards
3. Digital via Excel
4. Prinect Portal

1. Installed MIS/ERP system
2. Dedicated planning tool

Prinect Anwendertage - Planungsworkshop
Prinect User Days - Planning workshop



1. Prinect Scheduler



3% of Installations

Agenda

1. Introduction to scheduling
- 2. Sequence planning with Prinect Portal**
3. Application of Prinect Scheduler at Druckstudio
4. Self-programmed Status-Live-board via API of Druckstudio
5. Plate production via Plate Pilot at Druckstudio
6. Questions

Start up via sequence planning in Prinect Portal

Live Demo

5 laws for Scheduler usage



A job requires a **Due Date** or a **Delivery Date**.



Jobs with Due Dates, **older than 28 days**, are not displayed in the Scheduler.



A Job requires **sheet/s** which are **assigned to Sequence Templates**.

JDF-compatible MIS systems will set up this process network in Integration Manager.

It can also be set up manually with the Job Assistant.



A job whose operations have **all been executed** will no longer appear in the Scheduler.



Jobs with status "**finished**" or "**canceled**" are not displayed in the Scheduler

Agenda

1. Introduction to scheduling
2. Sequence planning with Prinect Portal
- 3. Application of Prinect Scheduler at Druckstudio**
- 4. Self-programmed Status-Live-board via API of Druckstudio**
- 5. Plate production via Plate Pilot at Druckstudio**
6. Questions

Planning process at Druckstudio

1. **Job creation in Prinance.**
2. **Scheduling of the outgoing/arrival delivery date as well as milestones such as data receipt, proofing, etc.**
3. XML creation in Prinance.
 1. The JDF-compatible MIS system Prinance generates a process network in Prinect.
 2. The process network with cost centers and scheduled dates is mapped in the scheduler.
 3. The sales operator sends the customer an invitation link for data upload from the Prinect Portal.
4. Detailed scheduling is done in the Scheduler.
5. Special feature at Druckstudio: extended workbench — the external subcontractors/finishing partners are also mapped in the scheduler.
6. Status messages (start/end) from the machines via JMF (imagesetters and printing presses). Data-terminal Status messages (start/end) from digital printing presses, die-cutting machines, and cutting machines.

Prinect Anwendertage - Planungsworkshop
Prinect User Days - Planning workshop



Planning process at Druckstudio

1. Job creation in Prinance.
2. Scheduling of the outgoing/arrival delivery date as well as milestones such as data receipt, proofing, etc.
3. **XML creation in Prinance.**
 1. **The JDF-compatible MIS system Prinance generates a process network in Prinect.**
 2. **The process network with cost centers and scheduled dates is mapped in the scheduler.**
 3. The sales operator sends the customer an invitation link for data upload from the Prinect Portal.
4. Detailed scheduling is done in the Scheduler.
5. Special feature at Druckstudio: extended workbench — the external subcontractors/finishing partners are also mapped in the scheduler.
6. Status messages (start/end) from the machines via JMF (imagesetters and printing presses). Data-terminal Status messages (start/end) from digital printing presses, die-cutting machines, and cutting machines.

Prinect Anwendertage - Planungsworkshop
Prinect User Days - Planning workshop



Planning process at Druckstudio

1. Job creation in Prinance.
2. Scheduling of the outgoing/arrival delivery date as well as milestones such as data receipt, proofing, etc.
3. XML creation in Prinance.
 1. The JDF-compatible MIS system Prinance generates a process network in Prinect.
 2. The process network with cost centers and scheduled dates is mapped in the scheduler.
 3. **The sales operator sends the customer an invitation link for data upload from the Prinect Portal.**
4. Detailed scheduling is done in the Scheduler.
5. Special feature at Druckstudio: extended workbench — the external subcontractors/finishing partners are also mapped in the scheduler.
6. Status messages (start/end) from the machines via JMF (imagesetters and printing presses). Data-terminal Status messages (start/end) from digital printing presses, die-cutting machines, and cutting machines.

Prinect Anwendertage - Planungsworkshop
Prinect User Days - Planning workshop



Planning process at Druckstudio

1. Job creation in Prinance.
2. Scheduling of the outgoing/arrival delivery date as well as milestones such as data receipt, proofing, etc.
3. XML creation in Prinance.
 1. The JDF-compatible MIS system Prinance generates a process network in Prinect.
 2. The process network with cost centers and scheduled dates is mapped in the scheduler.
 3. The sales operator sends the customer an invitation link for data upload from the Prinect Portal.
4. **Detailed scheduling is done in the Scheduler.**
5. **Special feature at Druckstudio: extended workbench — the external subcontractors/finishing partners are also mapped in the scheduler.**
6. **Status messages (start/end) from the machines via JMF (imagesetters and printing presses). Data-terminal Status messages (start/end) from digital printing presses, die-cutting machines, and cutting machines.**

Prinect Anwendertage - Planungsworkshop
Prinect User Days - Planning workshop



Self-programmed Status-Live-board via API

BEREICHE

Startseite

Tauron Planung

Live-Board

Versand

Startseite

Tauron Planung

Live-Board

Versand

Princt – Live-Board

Aktive Druckjobs mit Status (Daten, Freigabe, Platten)

Aktualisieren

Drucken

Sortierung: Druckstart

Alle Kundenmanager

Stand: 10.12.2025 14:37 Uhr

Druckstart	Auftragsnummer	Kunde	Kundenmanager	Maschine	Daten	Freigabe	Platten
10.12.2025 12:00 Uhr	25-12-2434	Katholische Kirchengemeinde 7600 Weihnachtskarten 2025 katholische Kirchengemeinde St. Pete	Voß Christian	C9010VP	Daten vorhanden Dateneingang: 08.12.2025 15:56	Freigegeben 09.12.2025 10:15	Digitaldruck
10.12.2025 14:02 Uhr	25-12-2398	Interprint GmbH Auflieber Interprint 67x34 mm IP-Logo - mit abgerundeten Ecken	Voß Christian	XL106-5	Daten vorhanden Dateneingang: 04.12.2025 08:26	Freigegeben 09.12.2025 11:47	Platten erstellt 10.12.2025 09:12
10.12.2025 15:50 Uhr	25-12-2390	ARQIS Partnerschaftsgesellschaft mbH Briefbogen - unveränderte Nachproduktion	Latz Frank	XL106-5	Daten vorhanden Dateneingang: 03.12.2025 14:06	Freigegeben 03.12.2025 14:28	Platten erstellt 10.12.2025 09:11
10.12.2025 17:56 Uhr	25-12-2369	AGROCONCEPT GmbH UPL-Broschüre Sonderkulturen 2026, 4 + 40 Seiten	Latz Frank	XL106-5	Daten vorhanden Dateneingang: 05.12.2025 12:57	Freigegeben 05.12.2025 14:39	Platten erstellt 10.12.2025 09:09
11.12.2025 03:51 Uhr	25-12-2401	Petersen, Jeannette Art & Wisdom Cards	Winter Sacha	XL106-5	Daten vorhanden Dateneingang: 08.12.2025 12:52	Freigegeben 09.12.2025 14:58	Platten erstellt 10.12.2025 12:56
11.12.2025 06:46 Uhr	25-12-2459	Vodafone GmbH Blister Vodafone 3 Sorten: 77507066 Blister Allways On 20.000Ex	Westphal Peter	XL106-5	Daten vorhanden Dateneingang: 10.12.2025 11:12	Keine Freigabe versendet	Keine Platten
11.12.2025 07:36 Uhr	25-12-2453	Diam.A.S GmbH Weihnachtskarten 2025 + Briefhüllen DIN Lang	Voß Christian	C9010VP	Keine Daten Dateneingang: --	Keine Freigabe versendet	Digitaldruck
11.12.2025 08:18 Uhr	25-12-2455	Vodafone GmbH Blister klein 1 Sorte: 77507336 CallYa Allnet Flat M Norma, Le	Puslat Dirk	XL106-5	Daten vorhanden Dateneingang: 09.12.2025 16:07	Freigegeben 10.12.2025 12:26	TIFF-B erstellt 10.12.2025 12:28
11.12.2025 08:26 Uhr	25-12-2410	EKO Haus der japanischen Kultur e. V. Neujahrskarte 2025 im Digitaldruck	Latz Frank	C9010VP	Daten vorhanden Dateneingang: 08.12.2025 08:29	Freigegeben 09.12.2025 09:24	Digitaldruck
11.12.2025 09:54 Uhr	25-12-2458	Vodafone GmbH Vodafone Mini Blister 2 Sorten: 77507369 Blister CallYa Allnet	Westphal Peter	XL106-5	Daten vorhanden Dateneingang: 10.12.2025 12:04	Keine Freigabe versendet	Keine Platten
11.12.2025 10:16 Uhr	25-12-2460	Garten-Center Kremer GmbH Gutscheinblister-Sonderedition für Kremer, 1 Version	Voß Christian	C9010VP	Daten vorhanden Dateneingang: 10.12.2025 07:28	Freigegeben 10.12.2025 10:27	Digitaldruck

Plate output via Plate Pilot

1. Plate Pilot in Prinect Portal.
2. The job sequence displayed in Plate Pilot for each machine matches the job sequence in the scheduler.
3. Definition of a plate stack by the number of jobs.
4. Create a plate stack.
5. The automatic imaging is performed in the reverse order of the plate stack. The plate set imaged last is the first to be used by the printer.

Prinect Anwendertage - Planung
workshop Prinect User Days -
Planning workshop



Do you have questions?

