

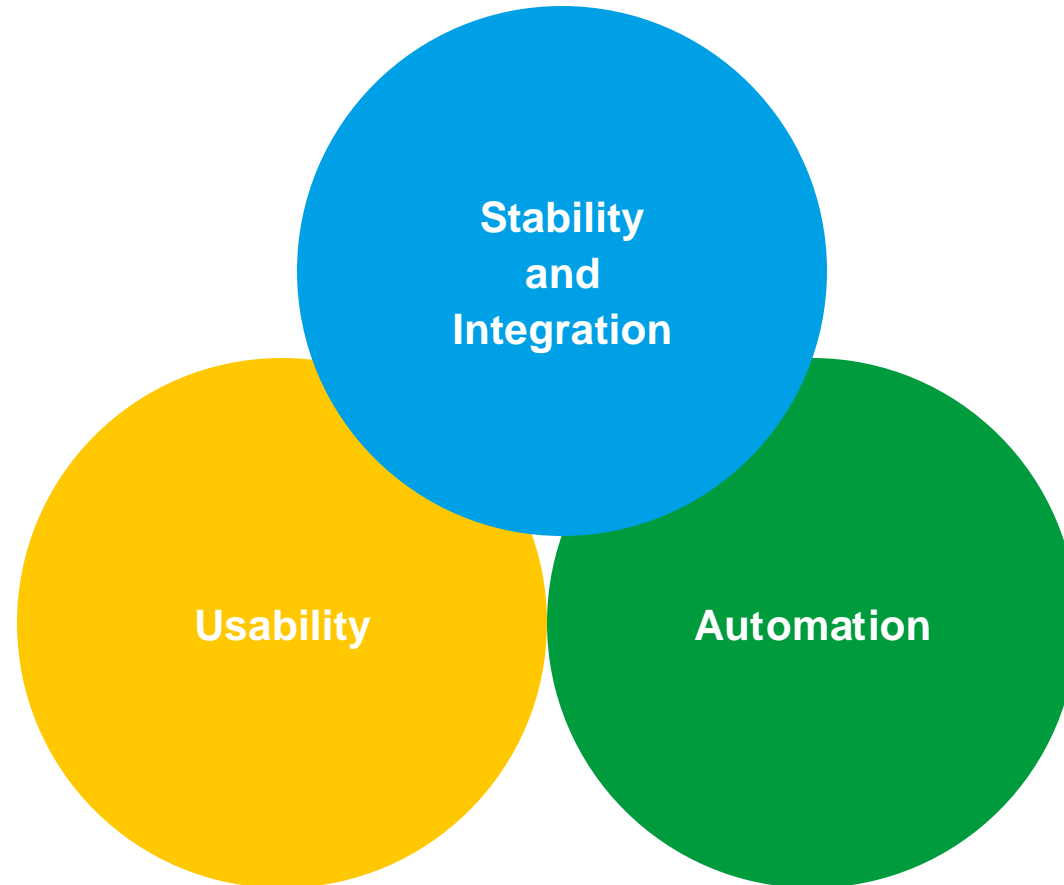
Signa Station

Fabian Reck | Friday 10:30 – 11:00 a.m.

Agenda

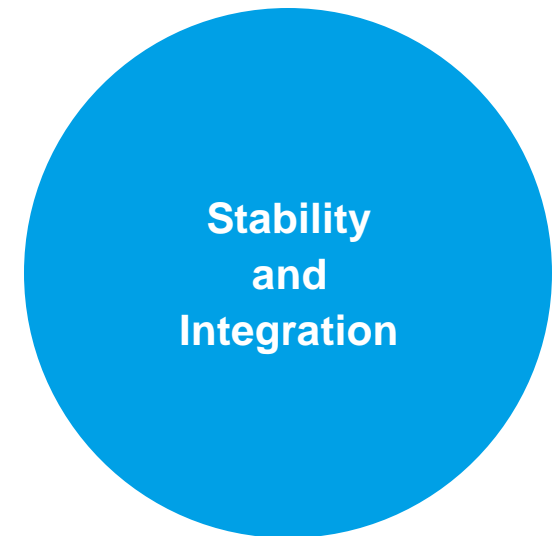
1. Updates on Prinect Signa Station
2. Live Demonstration
 - Automatic Layout Generation
 - Automatic Ganging

Our Focus



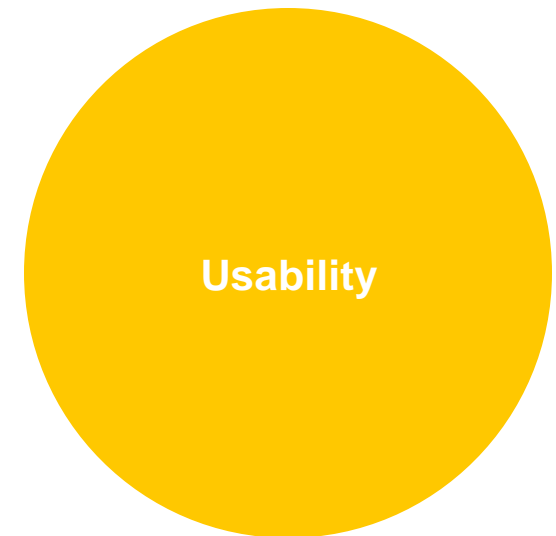
Stability and Integration

- Support for new operating systems
- Modernization of the technical platform
- Ensuring confidentiality and integrity of communication
- Act on changes in MIS systems
- Response on Customer Issues
- Restrict system user permissions
- Restrict access to network shares



Usability

- Graphic View
 - Enhanced magnetic alignment
 - Quick iteration through the press sheets
 - New Options for automatic alignment
- Quick search in Resources
- Convert manually placed marks to automatic marks
- New options and placeholders for marks
- Check for software updates



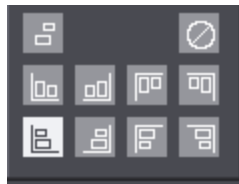
Magnetic Alignment in the Graphic View

- Highlighting of aligned blocks
- Simplified manual arrangement of differently sized blocks



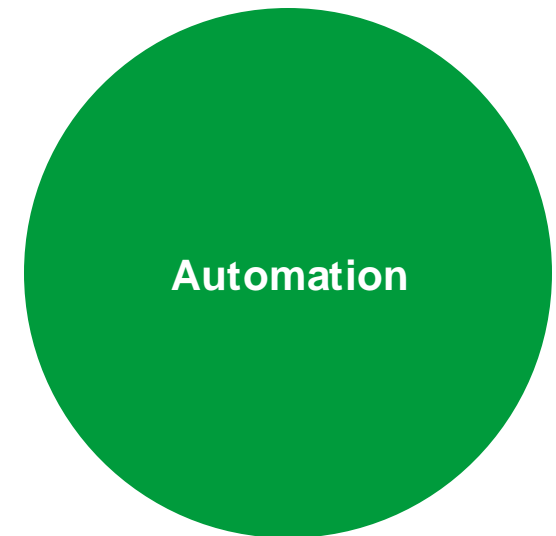
Magnetic Alignment in the Graphic View

- Tools for quickly and safely arranging differently sized blocks into strips
- Warning when blocks are overlapping



Automation

- Automarks Sets
- Up to 4 instances of the Signa Server
- Up to 4 instances of the Signa Gang Server per machine
- Ganging Optimization
 - Minimum and Maximum Sheet Quantity
 - Maximum 1up waste
 - Better consideration of printing and coating units
 - Filter for production amount(for multi up production)
- Support for the sheet brake assistant



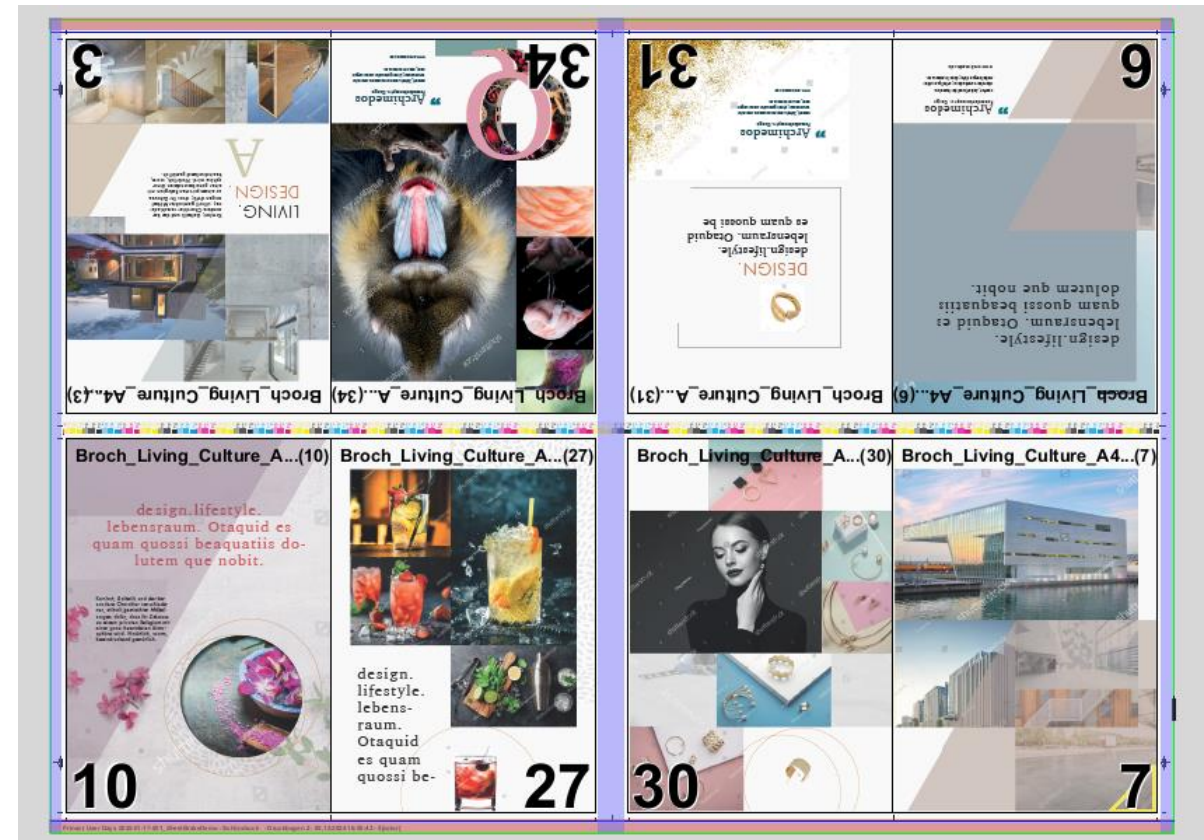
Sheet Brake Assistant

Signa

- Automatic determination of possible gaps
- Visualization
- Communication to the press
- No configuration needed

Press

- Automatic adjustment of sheet brakes
- Notification if manual adjustments are required
- Warning if sheet brake is running through the content

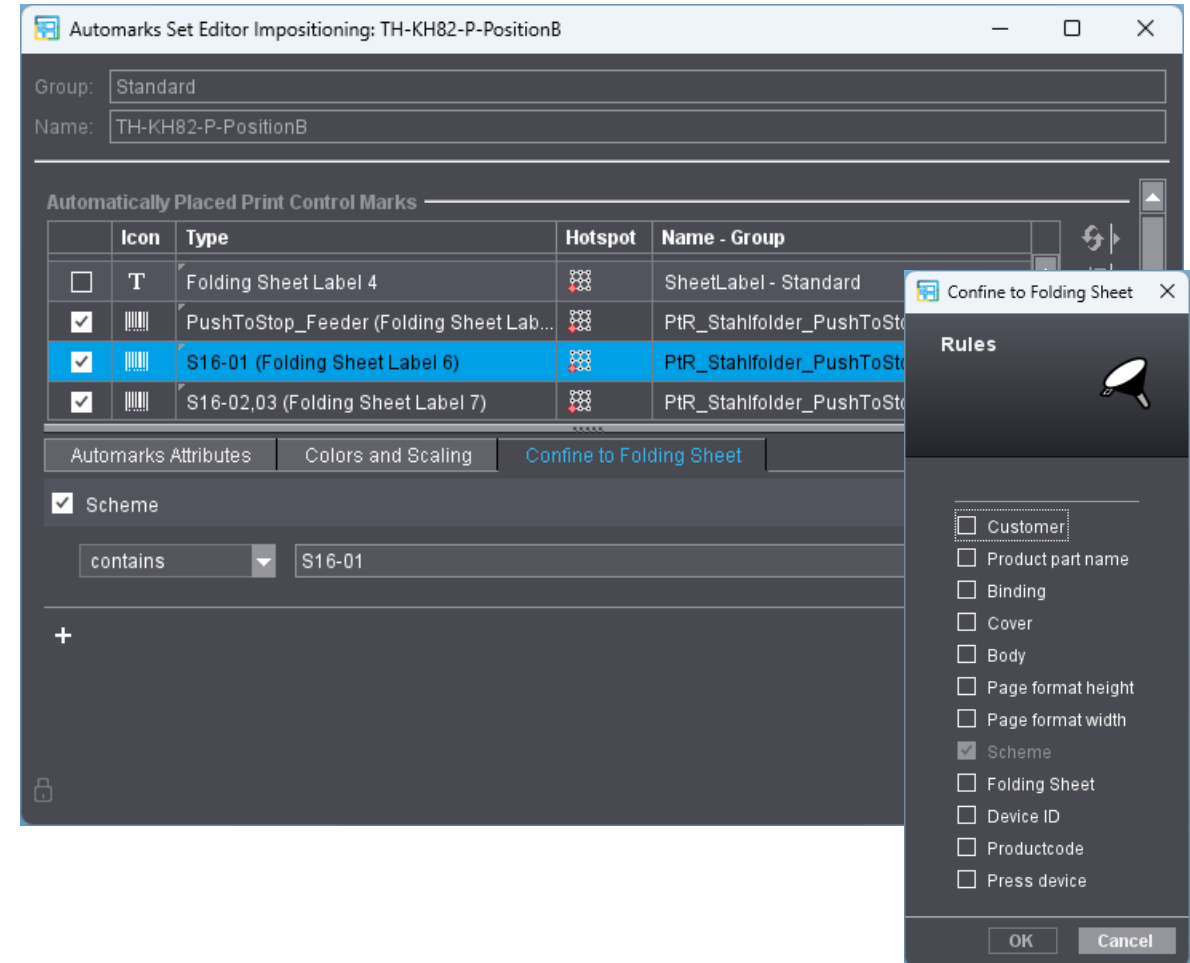


Automarks Sets

- Powerful ruleset for setting marks
- Enables flexible use of Product Part Templates
- Central management as independent resources

Example

- Push to Stop marks for Stahlfolder TH-KH82P



Live Demo Automation

Questions?

LET'S CONNECT

■■■■ PRINECT ■■
USER DAYS