

LET'S CONNECT

■■■■ PRINECT ■■
USER DAYS

WS4 Business Manager

Prinect User Days

Volker Kaiser and Matthias Höhl | Thursday 16th 3:00 – 3:30 pm , Thursday 16th 4:00 – 4:30 pm

Agenda

1. General topics

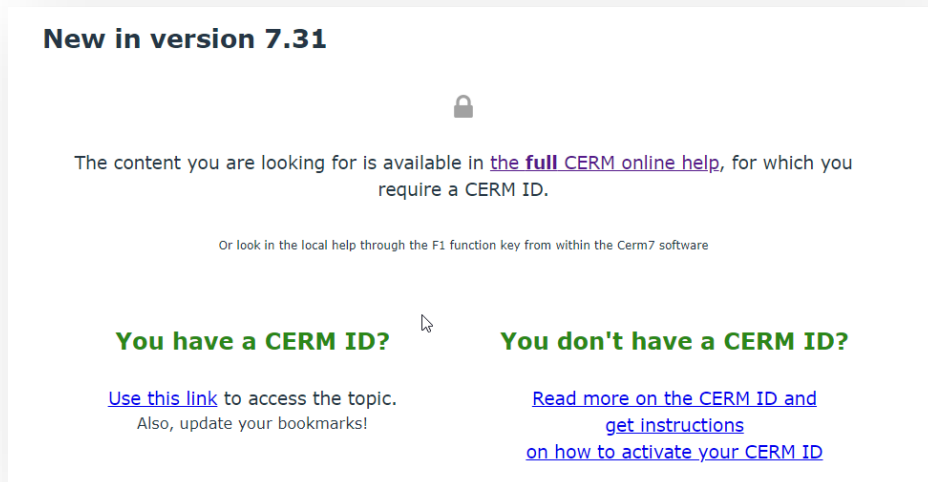
- CERM / Business Manager Online Help → CERM ID
- HEIDELBERG AI Bot for Online Help
- E-Invoicing
- New Videos for Prinect Business Mixed Commercial

2. Best practice including new features and preview

- Ganging with Prinect Business
- Optimized paper selection and Precutting in Sales Order Ganging
- Precutting in Speed Estimation
- Custom Fields

CERM / Business Manager Online Help → CERM ID

- Access to the CERM Online Help was recently restricted and can now only be accessed with an existing CERM ID.
- The „official“ Online help (via browser) is no longer „freely“ available.
- HEIDELBERG customers can directly contact CERM to request a CERM ID or ask our Prinect Business Manager support to do so.



HEIDELBERG ChatBot for Prinect Business

HEIDELBERG and CERM are breaking new ground in the area of “Online Help” and are going to expand their service with AI technology

What does it mean for you?

- CERM has announced a ChatBot called “Lumi”.
- HEIDELBERG has developed a Prinect Service ChatBot and plans to include Prinect Business content as well
- **Your benefits:**
 - Support of multi language
 - Usage of multiple data sources
 - Guided service ticketing



**For more information, please visit our workshop:
“Innovating Service: HEIDELBERG AI Service Assistant”**

E-Invoicing with Prinect Business

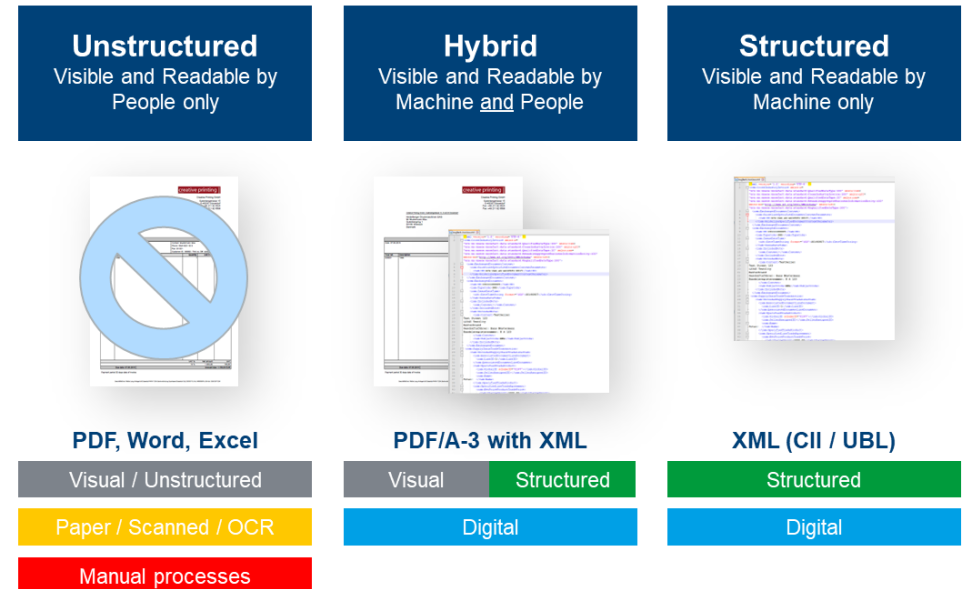
Prinect Business is ready for E-Invoicing around the world

- Our customers are increasingly being confronted with new e-invoicing regulations
- Customers are rightly asking us how we are positioned for this
- Regulations are varying among countries and evolving over time



Digital reporting requirements: Multiple formats

E-Invoicing provides efficient exchange of structured invoice data that are machine-readable



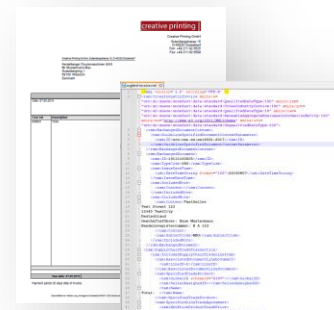
Situation:
Due to the increasing and regionally varying requirements for E-invoicing, Prinect Business had to introduce a new interface to a third party E-invoicing provider called “Avalara” to meet customer demands.

E-Invoicing with Prinect Business

➤ Complex E-Invoicing with our partner Avalara

- Avalara is a software company that provides cloud-based solutions to help businesses with tax compliance.
- Primary focus is on automating the complex processes related to sales tax, VAT, excise tax, and other transactional taxes across various jurisdictions.
- Avalara helps us being able to follow-up on all e-invoicing requirements of our customers without creating direct interfaces with all local authority systems worldwide

- ✓ For that purpose a partnership with a PDP (Partner Dematerialisation Platform) is required, which is **Avalara E-Invoicing**.



Avalara



New videos for Prinect Business Mixed Commercial Workflow

Video 1:
Estimation and
CAD-Integration

1

NEW
**COMING
SOON**

What can you expect?

Easy and quick way for an MIS-Operator to create an Estimation incl. Shape-Creation and automatic Layout Creation without having the CAD or Prepress Department involved.

Video 2:
1up Workflow, Shape- & Tool
Management

2

NEW
**COMING
SOON**

What can you expect?

Fully integration between Prinect Business and Prinect Production to create Products inclusive Processing & Approval on the 1Up-Level.

In this video we show the management of product, shape and tool information and their dependencies on each other.

Video 3:
Sales Orders Ganging

3

NEW
**COMING
SOON**

What can you expect?

Easy job creation based on Sales Orders of existing Products.

Best practice including new features and preview Use cases

Best practice including new features and preview

Use cases – Prinect Business Manager

→ Ganging with Prinect Business and Prinect Production

- **Manual ganging in calculation (Commercial)**
 - Label Ganging workflow without shapes (Labels)
 - Estimate with Ganging (Labels & Packaging)
 - Sales Order Ganging (Labels & Packaging)
 - Signa Ganging workflow – manual and automatic with scheduled tasks (Commercial)
-
- High potential for automation and cost savings with Ganging in Prinect Business and Production

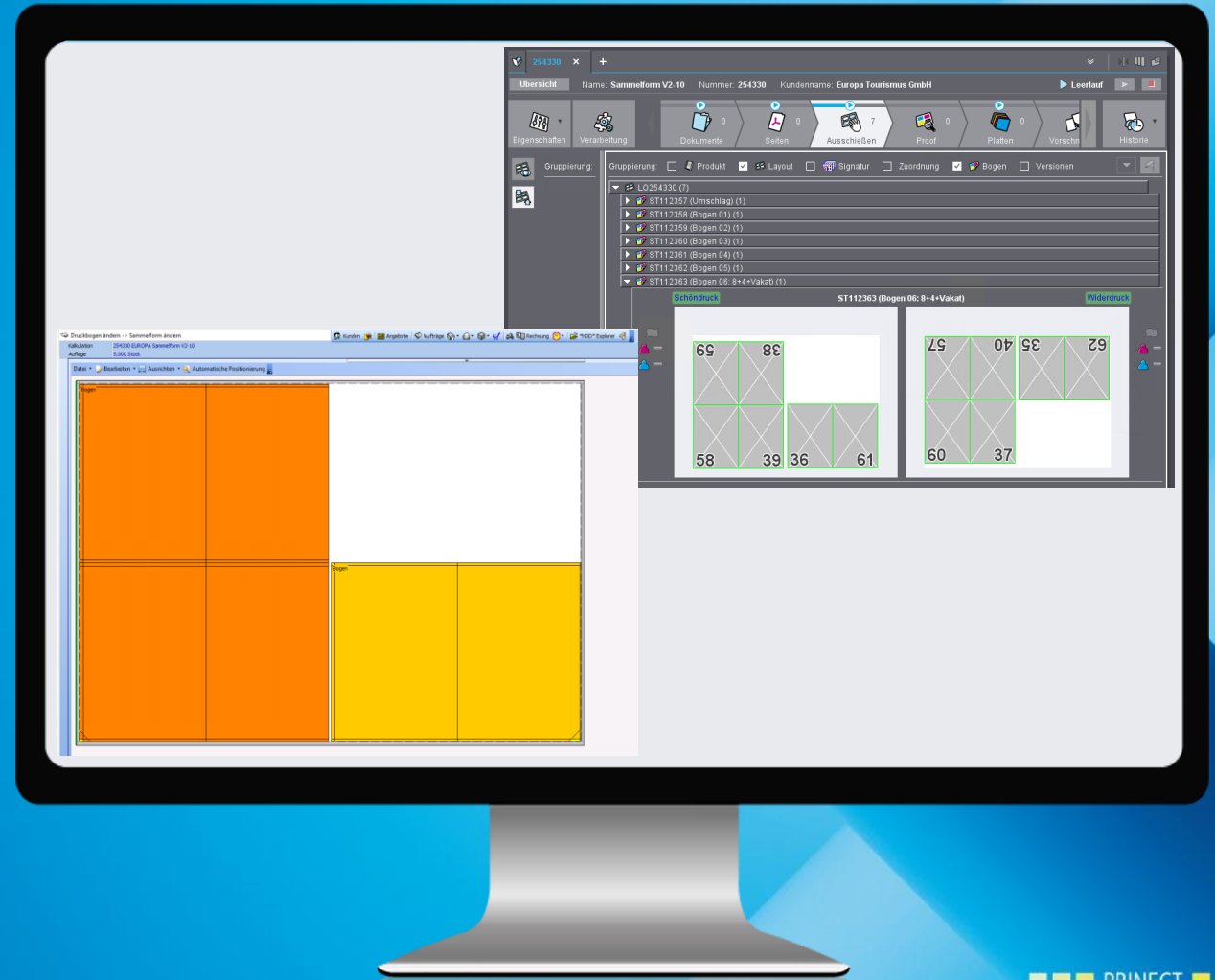


Best practice including new features and preview

Use cases – Prinect Business Manager

→ Scenario: Manual ganging in calculation

- Brochure 96 pages (Cover, 5 x 16 pager, 8 + 4 pager)
- Manual Ganging of 8 + 4 pager in one print sheet
- Considering correct folding scheme order
- Automatic job creation in Prinect Workflow inclusive gang layout and folding scheme order



Best practice including new features and preview

Use cases – Prinect Business Manager

→ Scenario: Manual ganging in calculation – your benefits

- Predefinition of folding sheet order based on the binding intent
- Automatic section numbering for the right folding sheet order, e.g. 16, 16, 16, 16, 4+8, 16
- Placing multiple folding sheets on one print sheet, e.g. 8 + 4 pager + 4 pages vakat
- Automatic impositioning by using data (e.g. folding schemes) from MIS

- Quick and easy workflow for manual gang form creation in calculation
- High automation potential for production with ganged forms in the Prinect Workflow.



Best practice including new features and preview

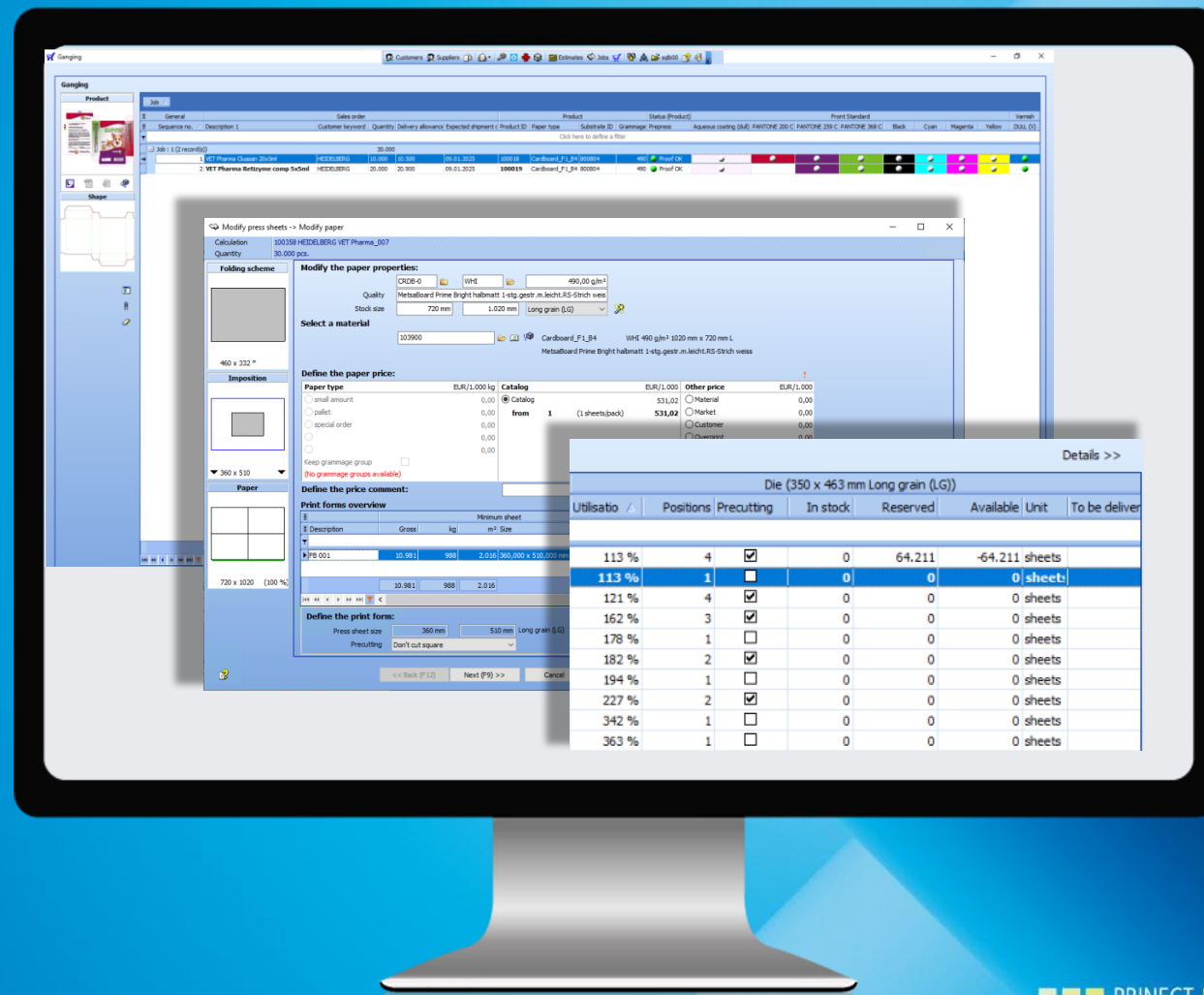
Use cases – Prinect Business Manager

→ Scenario: Optimized paper selection and Precutting in Ganging Workflow

- Placing a sales order based on an existing product
- Selection of the die cut tool and prepress templates
- Automatic paper selection based on the carton die with consideration of precutting
- Receiving a gang result from Signa Station on the fly



Live Presentation



Best practice including new features and preview

Use cases – Prinect Business Manager

→ Scenario: Optimized paper selection and Precutting in Ganging Workflow – your benefits

- Reduced touchpoints through optimized paper selection.
- Increased flexibility in paper selection and machine selection in the calculation.
- More safety by checking the right paper choice based on the die tool format.
- High automation potential for production with ganged forms in the Prinect Workflow.



Best practice including new features and preview

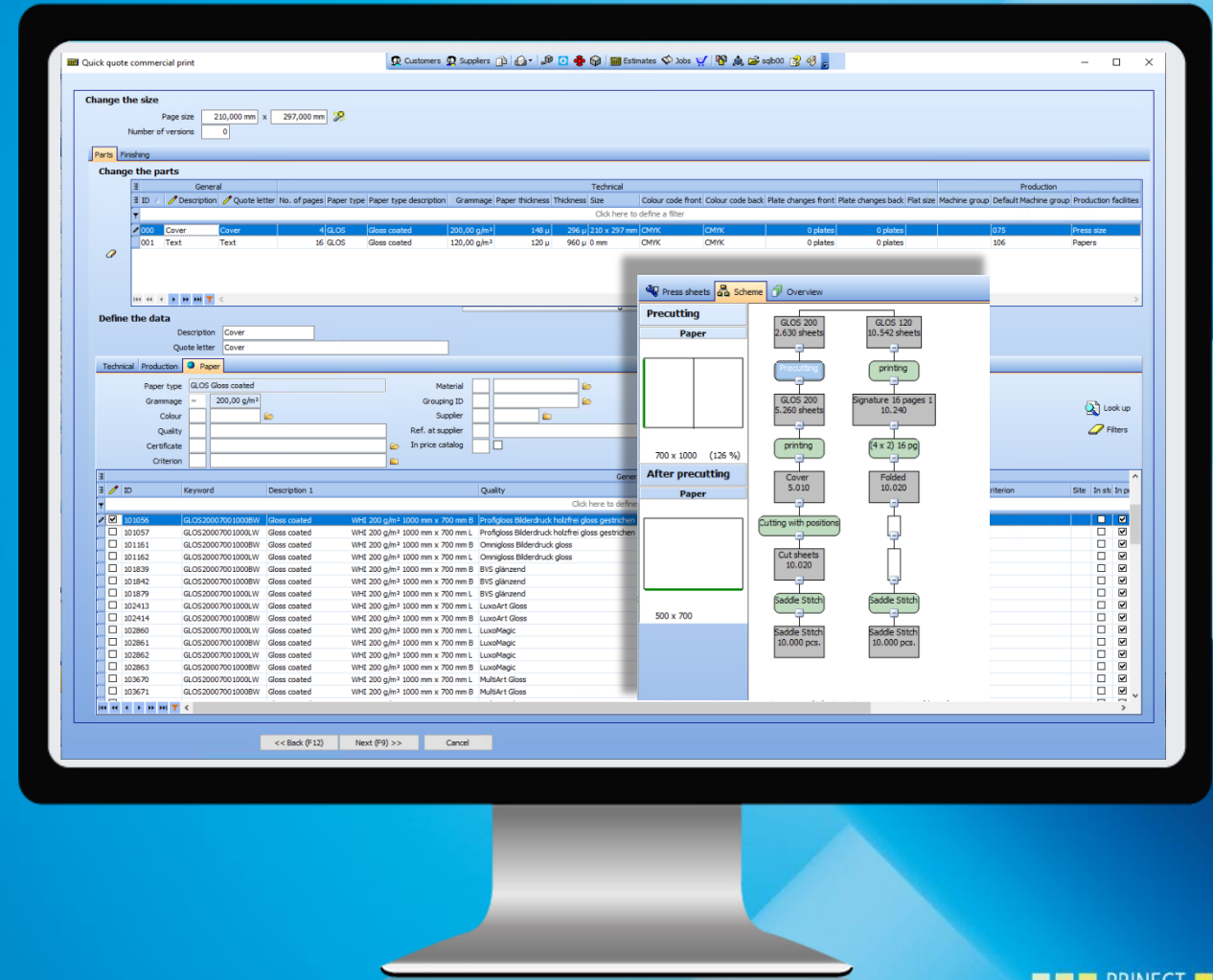
Use cases – Prinect Business Manager

→ Scenario: Precutting in Speed Estimation

- Brochure 36 pages (Cover, 2 x 16 pager)
- Creating an estimate with Speed Estimator
- Selection of specific paper per product part
- Automatic selection of precutting based on machine formats and costs



Live Presentation



Best practice including new features and preview

Use cases – Prinect Business Manager

→ Scenario: Precutting in Speed Estimation – your benefits

- End-to-end automation – no interruptions!
- Higher usability for the Speed Estimation.
- Higher flexibility in paper choice and machine selection.
- Extended range of functions for determining the best possible production route.

What is our Speed Estimator about?

- Fastest and most efficient way to automatically obtain a calculation result
- Based on predefined parameters in the product type
- Always considers the most cost-effective way



Best practice including new features and preview

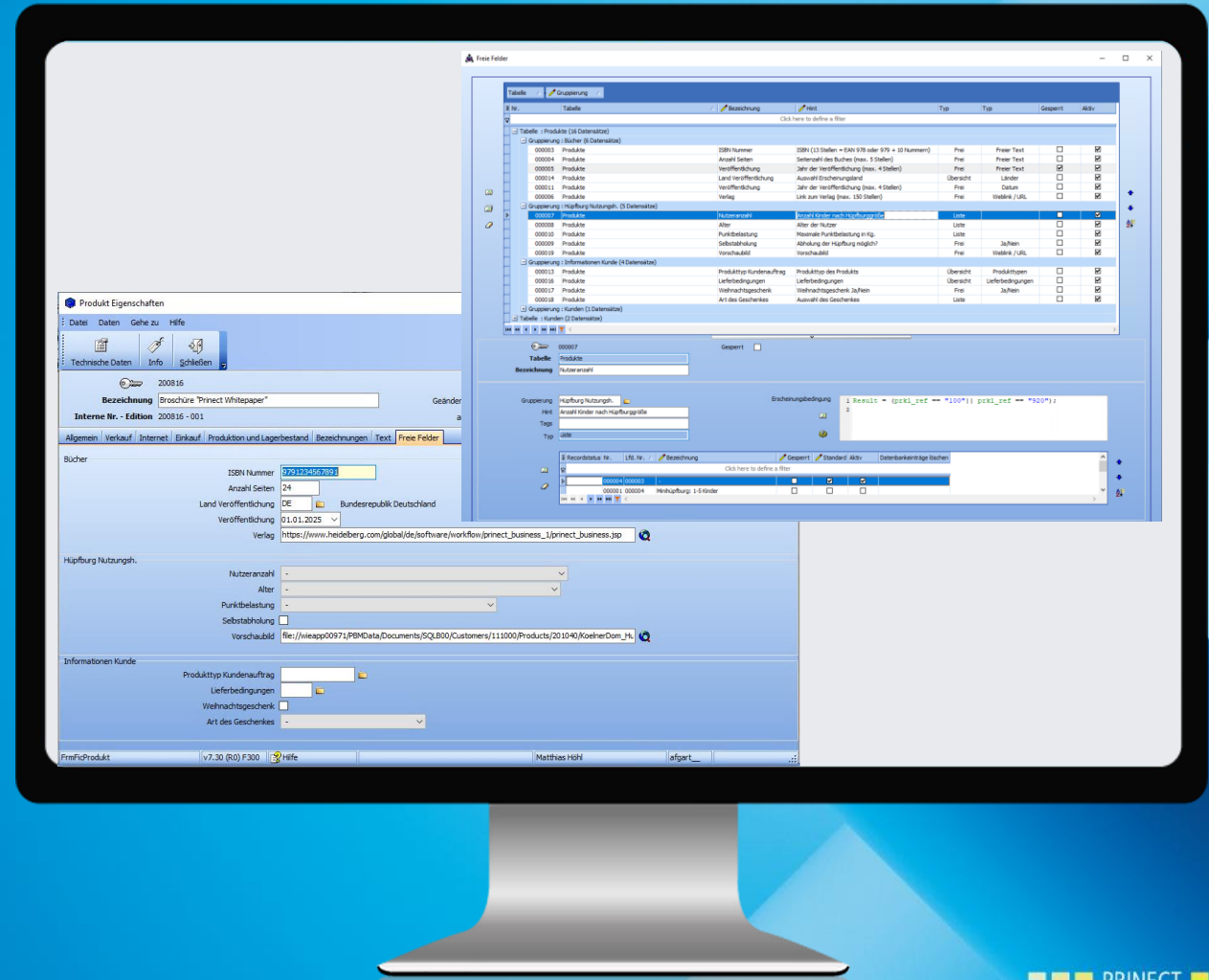
Use cases – Prinect Business Manager

→ Scenario: Custom fields

- Simple and flexible expansion of input fields based on customer requirements.
- Modules: products, customers, material, tools, offers, orders, suppliers, addresses, ...
- Custom fields can be displayed in reports.



Live Presentation



Best practice including new features and preview

Use cases – Prinect Business Manager

→ Scenario: Custom fields – your benefits

- Extended customization for additional information.
- Maximum flexibility and extensions to the standard specifications.
- Availability of custom fields in look up, column schemes, reports and layouts.
- Options: Free text input, selection from a predefined list, link/URL storage, selection fields, display in e.g. relevant product group.
- Custom fields can be used for documentation and analysis.



Summary



Impulses



Changes

Questions & answers

**Thank you
for your attention!**