

# LET'S CONNECT

■■■■ PRINECT ■■  
USER DAYS

# WS 2 - Packaging automation How we automated our workflow.

Prinect User Days 2025

Janine Schneider, Simon Top, Gerhard Hamprecht | Wiesloch, 17.01.2025

# Workshop agenda

---

**01** ▶ Are you automated?

---

**02** ▶ Full automated packaging workflow.

---

**03** ▶ How did we start?

---

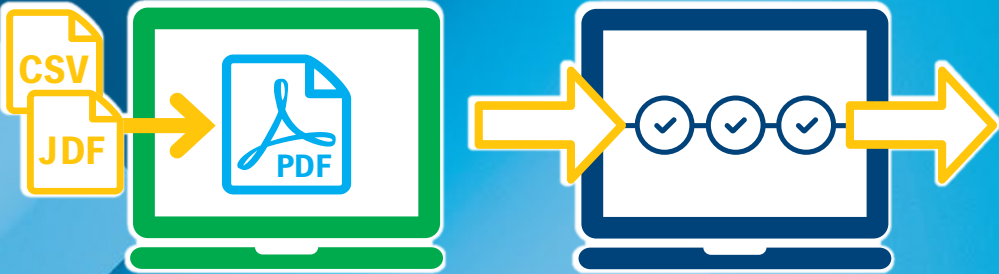
# Do you have an automated packaging workflow?

<https://forms.office.com/e/Mj2nY7sTRK?origin=lprLink>

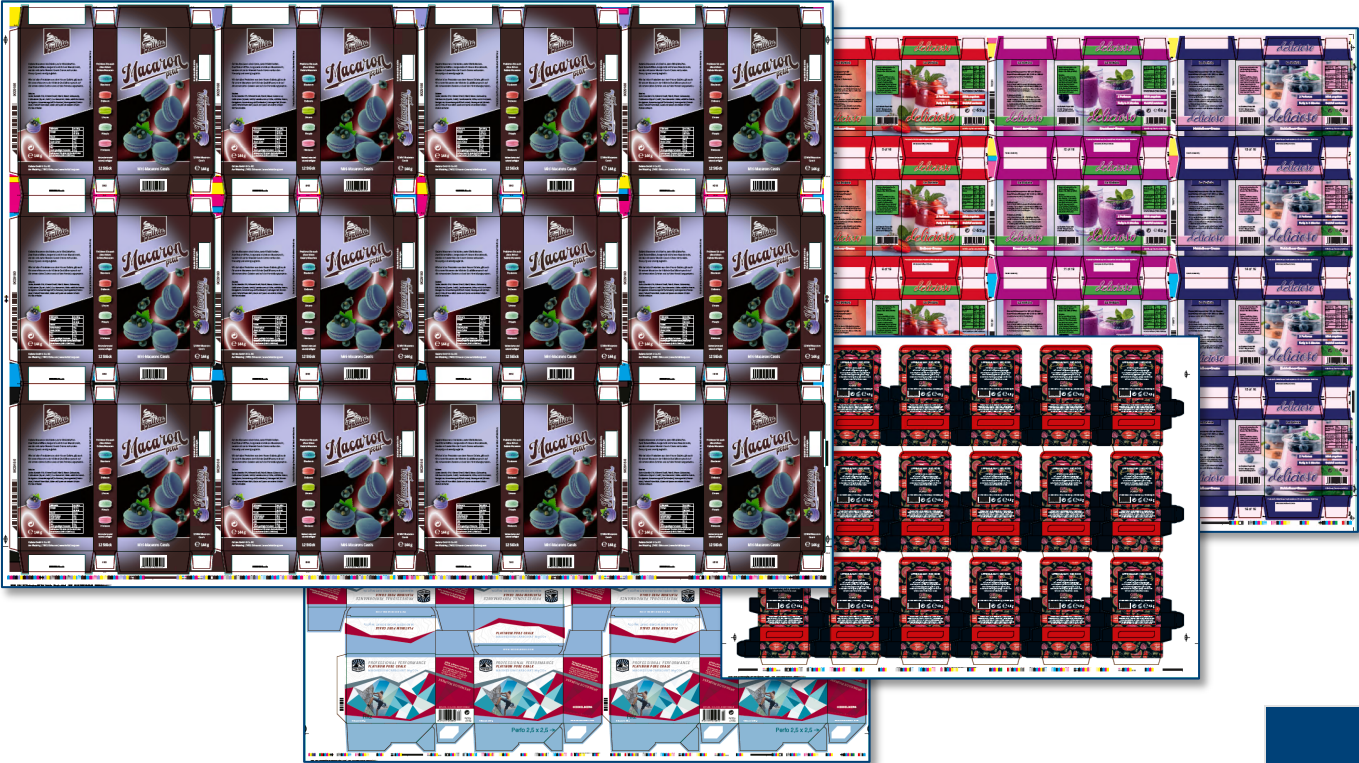


The answers are ...

# Live demo – full automated packaging workflow in Prinect Production



# Packaging Job generator – MIS JDF | XJDF or PPF



Create JDF Job

## Packaging Jobs - live demonstration

- Job creation based on 3rd party MIS JDF
- Dynamic layout creation via Signa Station Server



### Job 1: Macaron

- external product management
- 1 article with product information



### Job 2: Delicioso

- Princt internal product management
- 3 articles with product information



# Packaging production related information

Articles	Tool IDs	Shape IDs	Product Code
9029180	D24002	240602	DieTool-D24002_P-Packaging_M-251x
700261,700072,702281	313723	10712280	DieTool-313723_P-Packaging_N-3_L-F
630001	100073	000028	DieTool-100073_P-Packaging_M-155x

With the “Packaging” user right, additional information is available in order lists, product properties and other order areas.

Navigation bar with icons and counts:

- CAD: 0
- Documents: 1
- 1ups: 1
- Imposition: 1
- Proof: 1
- Plates: 6
- Precutting: 0

This information can be transferred from the MIS system, for example.

Product details for article 9029180:

- Planned Quantity:** 300000
- Standard product type: none
- MIS-specific product type:
- Product Code: DieTool-D24002\_P-Packaging\_M-251x232\_O-L\_N-1
- Product Number: 9029180

**Package printing**

- Article Number: 9029180
- Shape ID: 240602
- Shape Name: Galetta
- 3D View:

6c\_FLS\_Macar...Emb\_JDF.pdf

# Colors & coatings

Assignment of job colors to mark colors

Automatically per surface  
 User-defined:  Global  in layout  
 Allow spot colors for BCMY

"Process" target: L\*a\*b\*, else CMYK  
 "Output" target: L\*a\*b\*, else CMYK

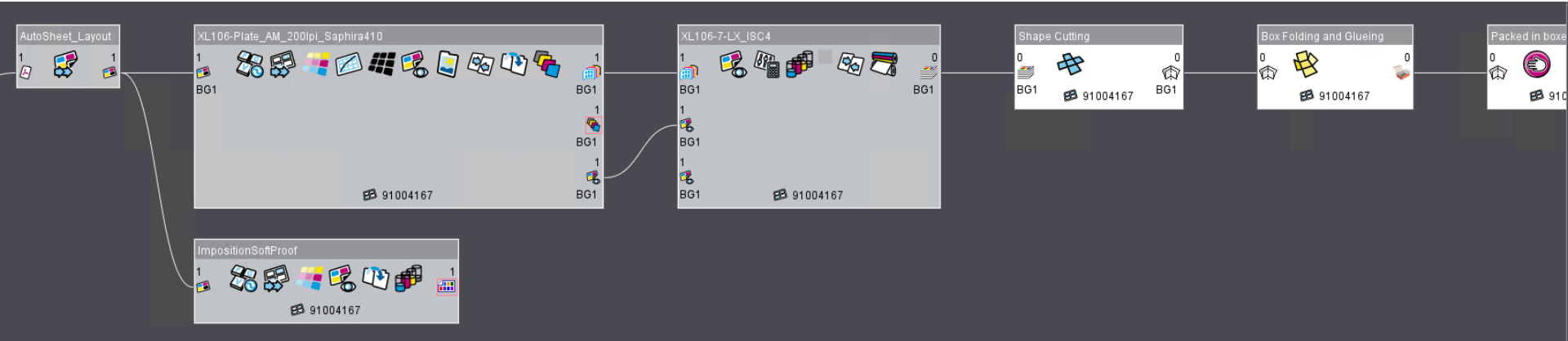
Submit print order to press  
 Output empty separations  
 Take color definitions for new colors from color tables  
 Autoresolve naming conflicts for new colors

Color List: All Colors      Output Profile: No output profile selected

Color	Name	Source	Target	Type	Usage	Varnis
	PANTONE 4975 C	PANTONE® Solid Coated-V5	Output	Normal	Printing Unit	
	Black	Job	Output	Normal	Printing Unit	
	Cyan	Job	Output	Normal	Printing Unit	
	Magenta	Job	Output	Normal	Printing Unit	
	Yellow	Job	Output	Normal	Printing Unit	
	PANTONE 271 C	PANTONE® Solid Coated-V5	Output	Normal	Printing Unit	
	ProofColor	Job	Output	DieLine	Proof	
	FLS	Job	Varnish (no output)	Transparent	Coating unit	W14424-40 Sem... Perfectscreen-3,0/90

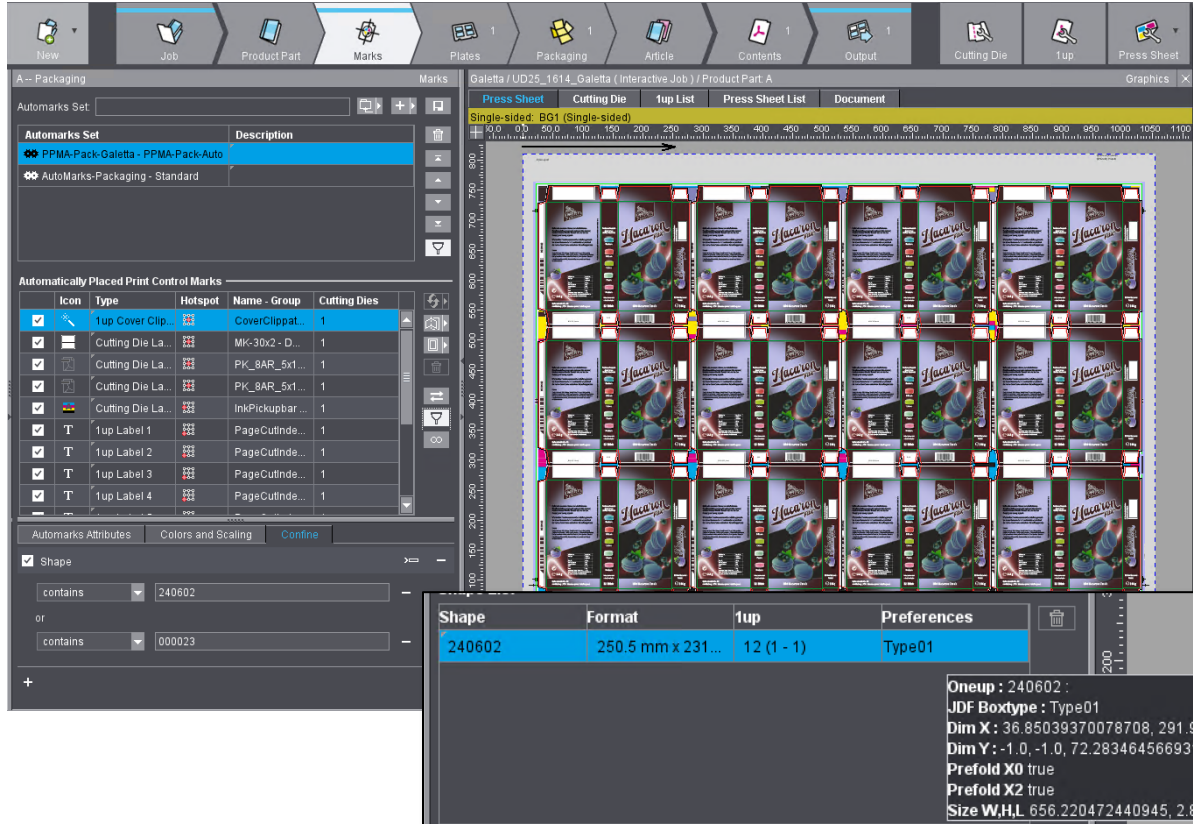
- Color information and color order can be transferred
- coating and anilox roller information is also available in the new coating data workflow (for more information, see WS 12)

# Smart Processing



- Continuous processes thanks to Smart Automation.
- Product-specific processing and sequence replacement based on various criteria such as product code or the transferred MIS properties
- Dynamic selection of process calibrations based on material properties and other criteria
- Automatic calculation and delivery of inspection data
- Availability of all process information for printing and further processing

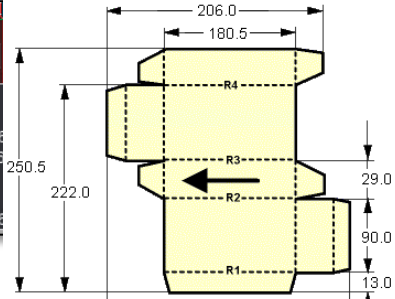
# Automatic layout creation and placement of marks



Layout creation in this example using the sheet layout description provided by the MIS.

Rule-based mark placement by using **Automarks sets**

By using the Prinect Package Designer project format **EVD**, additional information is available in the workflow.



# Princt for managing products

Name	Source Job Number	Assigned 1up
▶ BlackBerry	(1) <a href="#">100307</a>	
▶ Blueberry	(1) <a href="#">100293</a>	
▶ Strawberry	(1) <a href="#">100308</a>	

## Management of product data

- Pre-press processing up to the approval of the 1up in the **product job**
- **Production job** references the product job
- No new PDF processing in the production job



# Optimized processes right up to the printing press

## Job preparation



Number  
UD25\_1614



Name  
UC Packaging Ex01 - JDF Galetta



Operation  
BG1 6/-



Customer  
HD AG - Packaging Reference JDF



Article Numbers  
90291 80



Quantity  
25367



Production speed  
21 000



Production data collection



Notes



Job counter  
0



Waste-sheet counter  
0



Planned Waste  
450



Tape inserter  
100

Device Assistant  
Treiber



# What did we do? – Summary

## Job 1: Macaron

- JDF of 3rd party MIS
- external product management
- 1 article with product information
- layout creation via Signa Station Server



## Automation options in your Prinect Production Packaging workflow.

- Job creation in Prinect Cockpit based on JDF file
- Color order and Coating information
- The source of the Coating information coming from the HEIDELBERG Customer Portal
- Prinect Process net
- 1 ups
- layout creation within Signa Station Server  
– usage of automark sets
- Plate information
- Sheet finishing information

# What did we do? – Summary

## Job 2: Delicioso

- JDF of 3rd party MIS
- internal product management
- 3 articles with product information
- layout creation via Signa Station Server

## Automation options in your Prinect Production Packaging workflow.

- Job creation in Prinect Cockpit based on JDF file
- Prinect Process net
- layout creation within Signa Station Server
  - usage of automark sets
  - Ganging optimization by the MIS
- Press Center where the available prepress information reducing touch points at the press.





# How did we start?

## How did we start?

### ANALYZE

- What is the production process?
- What products and which processes do we standardize?
- What data do we need for the production process?
- Where does the required data come from?

### PLAN

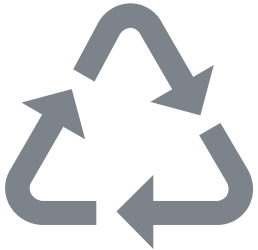
- What do we automate first?
- Which processes are we standardizing first?

### DO

- Implement the standardization.
- Implement the automations step by step.
- Improve and extend standardization and automation.

#### Note:

- Automation is a continuous process.
- Start small and build up and improve your workflow step by step.



# NEW - Prinect video tutorials for packaging

Prinect Video Tutorials

Start > Packaging/Label

### Package Designer

- Manual and Automatic Shape Request**  
Duration: approx. 10 min  
ER | ES | IT | PT | JA | ZH | KO  
Details...
- Tool Request Based on a Customer File with Subsequent Production Job**  
Duration: approx. 7 min  
ER | ES | IT | PT | JA | ZH | KO  
Details...

### Marks

- Automarks in the Workflow part 1: More flexibility in the choice of workflow**  
Duration: approx. 4 min  
Details...
- Automarks in the Workflow part 2: Quicker to a new Layout with Automarks Sets**  
Duration: approx. 3 min  
Details...
- Automarks in the Workflow part 3: Automation with Automarks**  
Duration: approx. 5 min  
Details...
- Typical Marks for Packaging Printing (Theory)**
- Typical Marks for Packaging Printing (Practical Usage)**



**One more question:**

**What is the next thing you want to do in your packaging prepress?**

<https://forms.office.com/e/jhiE4GwxBu?origin=lprLink>



**Thank you for your attention**

# LET'S CONNECT

■■■■ PRINECT ■■  
USER DAYS