

**LET'S**  **PRINECT**  
**USER DAYS**

**CONNECT**

# What's New in Prinect Production?

Presenter: Wiebke Stoltenberg | January 16, 2025

# Prinect CR Production - NEWS

# Prinect CR

# Prinect Cloud Ready

# Prinect Continuous Release

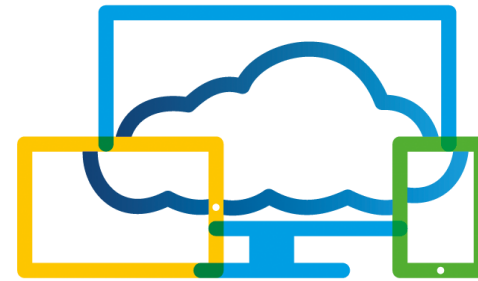
# Prinect CR

1. More security

2. New devices

3. Other new functionality

5. New with HEIDELBERG Customer Portal



6. Multidot

**CYBER CRIME is surging!**





## Malware

1. **attacks rose by 71%** - between 2016 and 2021
2. **any given time, 4.1 million sites are infected.**

## & Ransomware

1. **attacks rose by 74%** - between 2023 and 2022.
2. Average ransomware attack cost for businesses **\$4.91 million**
3. Seven percent of ransomware attacks resulted in **financial loss** in 2023, with a **median ransom payment of \$10,000.**



# Only Operating Systems supported by Microsoft / Apple

1. Prinect CR versions only work on operating systems that receive security updates from Microsoft/Apple:

[Prinect System Requirements \(PDF\)](#)

[Prinect Operating Systems \(PDF\)](#)



**Prinect CR - Operating systems overview**  
Valid as of 2025.0.4 / Cutting as 2025.0.4

Prinect CR Manager Server components	Windows 10 Professional 64-bit	Windows 11 Professional 64-bit	Windows Server 2019 64-bit	Windows Server 2022 64-bit	Windows Server 2025 64-bit
Business Manager	X	X	✓	✓	✓
Integration Manager	X	X	✓	✓	✓
Production Manager	X	X	✓	✓	✓
Prepress Manager	✓	✓	✓	✓	✓
Prevision Manager	✓	✓	✓	✓	✓
Progress Manager	X	X	✓	✓	✓
Digital Print Manager	X	X	✓	✓	✓
SPC Analysis (Analytical Software)	X	X	✓	✓	✓
SPC Laundry (Analytical Software)	X	X	✓	✓	✓
SPF Verifier (Workflow Software)	✓	✓	✓	✓	✓

Prinect CR Non-Manager Server components	Windows 10 Professional 64-bit	Windows 11 Professional 64-bit	Windows Server 2019 64-bit	Windows Server 2022 64-bit	Windows Server 2025 64-bit
Clipboard	✓	✓	✓	✓	✓
High Performance Receiver: Parallel	X	X	✓	✓	✓
High Performance Receiver: Serial	✓	✓	✓	✓	✓
Receiver: Labeling	X	X	✓	✓	✓
Range Control (Prepress, Business)	X	X	✓	✓	✓
Active Systems	X	X	✓	✓	✓
Active System Pro	X	X	✓	✓	✓
Process Data Center	X	X	✓	✓	✓

Prinect CR Client components	Windows 10 Professional 64-bit	Windows 11 Professional 64-bit	Windows Server 2019 64-bit	Windows Server 2022 64-bit	Windows Server 2025 64-bit	macOS 10.12 (Ventura) 64-bit	macOS 13 (Sonoma) 64-bit	macOS 14 (Sequoia) 64-bit
Prinect Production Cockpit	✓	✓	✓	✓	✓	✓	✓	X (1)
Business Manager Client	✓	✓	✓	✓	✓	X	X	X
Printed Work	✓	✓	✓	✓	✓	X	X	X (2)
Active System Work	X (3)	X (3)	✓	✓	✓	✓	✓	X (1)
Data Terminal	✓	✓	✓	✓	✓	✓	✓	X (1)
System Service	✓	✓	✓	✓	✓	X	X	X
Automatic Paper Switch Compensation	✓	✓	✓	✓	✓	X	X	X

Prinect CR Stand-alone components	Windows 10 Professional 64-bit	Windows 11 Professional 64-bit	Windows Server 2019 64-bit	Windows Server 2022 64-bit	Windows Server 2025 64-bit	macOS 10.12 (Ventura) 64-bit	macOS 13 (Sonoma) 64-bit	macOS 14 (Sequoia) 64-bit
Performance Center	✓	✓	✓	✓	✓	X	X	X
PDF Analysis	✓	✓	✓	✓	✓	✓	✓	X (1)
Range Station	✓	✓	✓	✓	✓	✓	✓	X (1)
Color Control	✓	✓	✓	✓	✓	X	X	X
Production Designer	✓	✓	✓	✓	✓	X	X	X

Prinect CR Mobile devices	iPhone	Android Heavy	Android Touchpad	Windows 8 Touch
Data Terminal	X	X	X	✓
Process Panel Work	X	X	✓	✓
Process Monitor	✓	✓	✓	✓

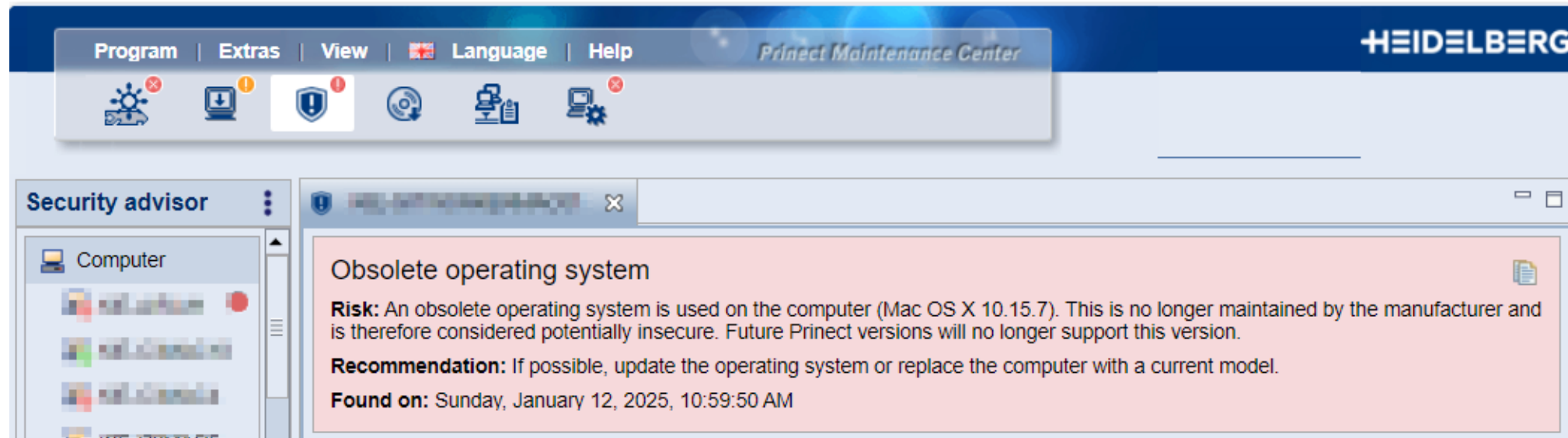
Recorder	Windows 10 Professional 64-bit	Windows 11 Professional 64-bit	Windows Server 2019 64-bit	Windows Server 2022 64-bit	Windows Server 2025 64-bit
Current portfolio:					
Supplementer A1575 Gen V with container size 11.12.1113	✓	✓	✓	✓	✓
Supplementer A158 100 Gen V with container size 11.23	✓	✓	✓	✓	✓
Supplementer A152 100 Gen V with container size 11.13	✓	✓	✓	✓	✓
Supplementer A11 A74 Gen IV with container size 11.11	✓	✓	✓	✓	✓
Supplementer A12 A14 Gen IV with container size 11.12	✓	✓	✓	✓	✓
Supplementer A10 A10 100 Gen IV with container size 11.11	✓	✓	✓	✓	✓
Supplementer A10 A10 100 Gen IV with container size 11.12	✓	✓	✓	✓	✓
Supplementer A10 A10 100 Gen IV with container size 11.13	✓	✓	✓	✓	✓
Supplementer A10 A10 100 Gen IV with container size 11.14	✓	✓	✓	✓	✓
Supplementer A10 A10 100 Gen IV with container size 11.15	✓	✓	✓	✓	✓
Supplementer A10 A10 100 Gen IV with container size 11.16	✓	✓	✓	✓	✓
Supplementer A10 A10 100 Gen IV with container size 11.17	✓	✓	✓	✓	✓
Supplementer A10 A10 100 Gen IV with container size 11.18	✓	✓	✓	✓	✓
Supplementer A10 A10 100 Gen IV with container size 11.19	✓	✓	✓	✓	✓
Supplementer A10 A10 100 Gen IV with container size 11.20	✓	✓	✓	✓	✓
Supplementer A10 A10 100 Gen IV with container size 11.21	✓	✓	✓	✓	✓
Supplementer A10 A10 100 Gen IV with container size 11.22	✓	✓	✓	✓	✓
Supplementer A10 A10 100 Gen IV with container size 11.23	✓	✓	✓	✓	✓
Supplementer A10 A10 100 Gen IV with container size 11.24	✓	✓	✓	✓	✓
Supplementer A10 A10 100 Gen IV with container size 11.25	✓	✓	✓	✓	✓
Supplementer A10 A10 100 Gen IV with container size 11.26	✓	✓	✓	✓	✓
Supplementer A10 A10 100 Gen IV with container size 11.27	✓	✓	✓	✓	✓
Supplementer A10 A10 100 Gen IV with container size 11.28	✓	✓	✓	✓	✓
Supplementer A10 A10 100 Gen IV with container size 11.29	✓	✓	✓	✓	✓
Supplementer A10 A10 100 Gen IV with container size 11.30	✓	✓	✓	✓	✓
Supplementer A10 A10 100 Gen IV with container size 11.31	✓	✓	✓	✓	✓
Supplementer A10 A10 100 Gen IV with container size 11.32	✓	✓	✓	✓	✓
Supplementer A10 A10 100 Gen IV with container size 11.33	✓	✓	✓	✓	✓
Supplementer A10 A10 100 Gen IV with container size 11.34	✓	✓	✓	✓	✓
Supplementer A10 A10 100 Gen IV with container size 11.35	✓	✓	✓	✓	✓
Supplementer A10 A10 100 Gen IV with container size 11.36	✓	✓	✓	✓	✓
Supplementer A10 A10 100 Gen IV with container size 11.37	✓	✓	✓	✓	✓
Supplementer A10 A10 100 Gen IV with container size 11.38	✓	✓	✓	✓	✓
Supplementer A10 A10 100 Gen IV with container size 11.39	✓	✓	✓	✓	✓
Supplementer A10 A10 100 Gen IV with container size 11.40	✓	✓	✓	✓	✓

Via TFP & only. More information available in Product Information "Prinect 2014 with Together CM" and "Prinect Integration Manager 2018-03".

Prinect Operating Systems team

Page: 1 of 2

# Warning in Prinect Maintenance Center



**Discontinued** are:

- Windows XP
- Windows 7
- Windows 8,
- Windows Server 2003
- Windows Server 2008
- Windows Server 2012
- Mac OS X 10.x
- Mac OS 11.x Big Sur
- Mac OS 12.x Monterey

# Prinect Portal Upload – openness becomes your choice

1. Several file types bear security risks and have thus been excluded from Portal uploads in Prinect 2021.10.46
2. Since then, the Portal can be used for PDF and JPG uploads only
3. This will be changed in Prinect CR



Please let us know, which file formats you might allow / need:

<https://forms.office.com/e/B53HFfau3Q>

Poll open until 22. Jan. 2025



# 2 Prinect CR. Supported Proofer

since Color Proof Pro 8.02



- SC-P110x0D (CT / RGB)
- Epson SC-P53x0 (CT / RGB)
- SC-P65x0E (CT / RGB)

▼ Color Proof Pro

- CR
- 2021.10 (8.0.X)
- 2021.10 (7.3.X)
- 2021.10 (7.1.X)
- [Color Proof Pro Device list \(PDF\)](#)

## Canon imagePROGRAF



- GP-2600S (CT / RGB)
- GP-4600S (CT / RGB)
- GP-526S (CT / RGB)
- GP-546S (CT / RGB)
- GP-566S (CT / RGB)
- GP-6600S (CT / RGB)
- PRO2600 (CT / RGB)
- PRO4600 (CT / RGB)
- PRO526 (CT / RGB)
- PRO546 (CT / RGB)
- PRO566 (CT / RGB)
- PRO6600S (CT / RGB)
- TM-240 CT
- TM-250 CT
- TM-255 CT
- TM-340 CT
- TM-350 CT
- TM-355 CT
- TM-5240 CT
- TM-5250 CT
- TM-5255 CT
- TM-5340 CT
- TM-5350 CT
- TM-5355 CT

# Prinect Production Workflow with Jetfire 50

**Prinect Production will be connected to the Canon PRISMAsync DFE.**

- based on the proven Digital Print Connector
- Interface is currently expanded exclusively for Prinect
- Jetfire 50 will operate like the Versafire.



# Intuitive “all in one” operation for digital printing

The screenshot displays the Heidelberg digital printing software interface, which is divided into several functional areas:

- 1) Overview Joblist:** A sidebar on the left showing a list of jobs. The selected job is "16-17162 Broschüre".
- 2) Current job view:** The main central area displays a preview of the current job, showing multiple pages of a brochure with various images and text.
- 3) Digital Print Tab:** A panel on the right side of the main view, containing settings for color management, embedded profiles, and output profiles.
- 4) Digital Printing Terminal:** A panel on the far right showing the status of the printing terminal, including device state, machine messages, and tray information.

The interface includes a top menu bar with options like File, Edit, View, Job, Tools, and Help. The main window title is "Job" and the current job name is "Broschüre" with number "16-17162". The status is "Idle".

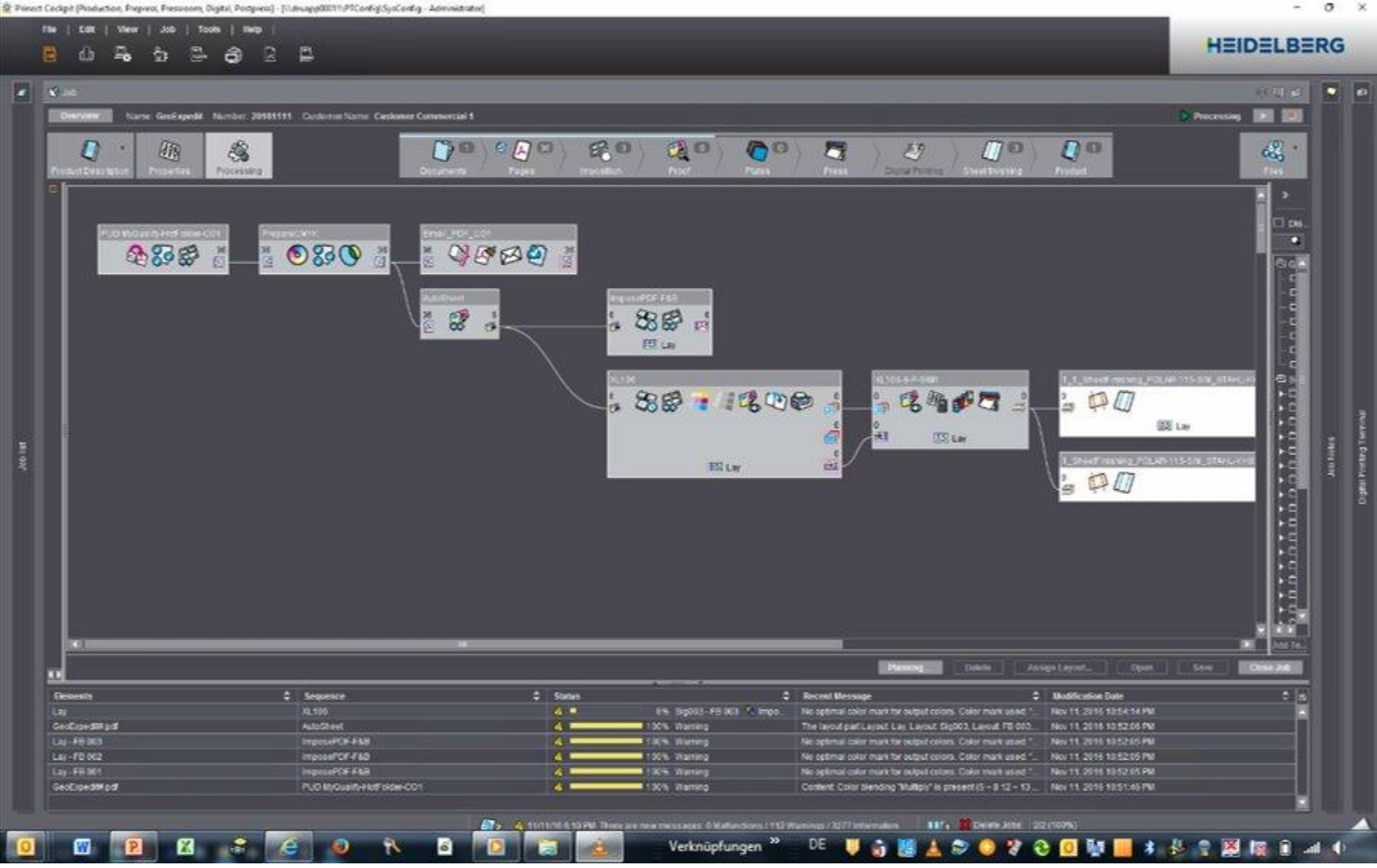
# Smart Automation

Automated sequences started by Smart Automation & Hotfolder

With Prinect Production you have everything you need to build up an automated workflow for the Jetfire 50 - with conditional processing, triggered by document information, product codes, color, amount

Prinect can take decisions.

**The Jetfire 50 is hungry – you can feed it with your Prinect Production Workflow**





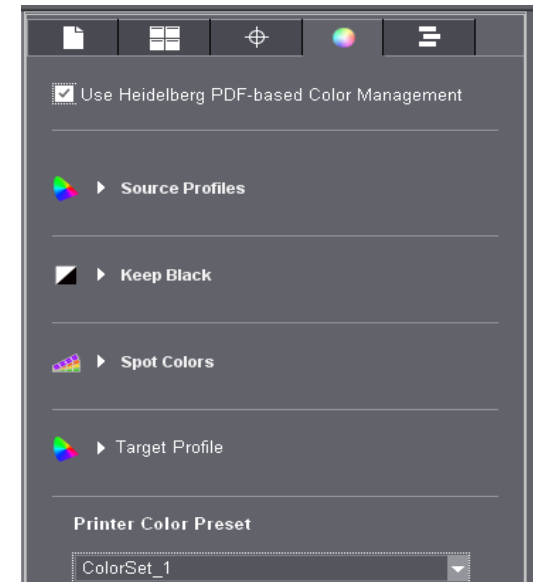
# Prinect Production Workflow connection to the Jetfire 50 Color Management

Workshop  
10



**HEIDELBERG Color Management Model (CMM):**  
Color Management is done in Prinect on the PDF  
= top color quality and color consistency

**This is HEIDELBERG hybrid printing!**



# Prinect CR. NEWS in a Nutshell

## 1. More security

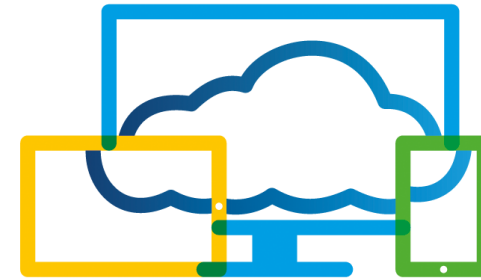
- operating systems
- Prinect Portal

## 2. New devices

- Proofers
- a JETFIRE 50

## 3. Other new functionality

## 4. New with HEIDELBERG Customer Portal



## 5. Multidot

## Prinect CR. Some more valuable functions

### → **MAC OS15 (Sequoia) with 5055.6**

new Macintosh computers usable “off shelf”  
for Prinect Components (Cockpit, Signa Station, PDF Toolbox)



### → **Business Manager 7.31**

Full new BM version included in  
Prinect CR, 5055.4 Package  
opening new workflow possibilities



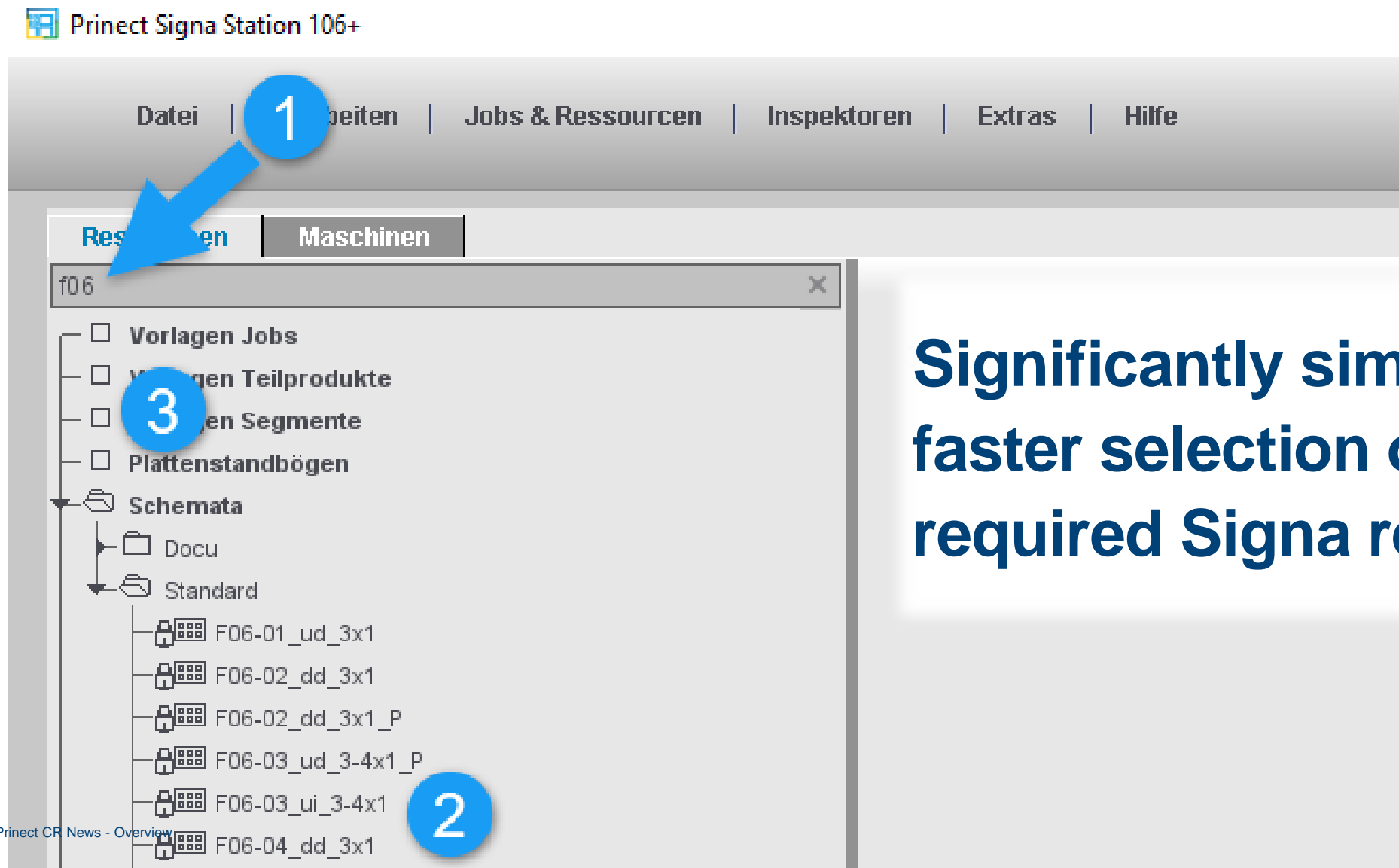
### → **Print Shop Analytics**

Insights e.g. displays connected **Jetfire** + **Postpress devices**



# Prinect CR. Searchable Signa Station

Workshop  
13

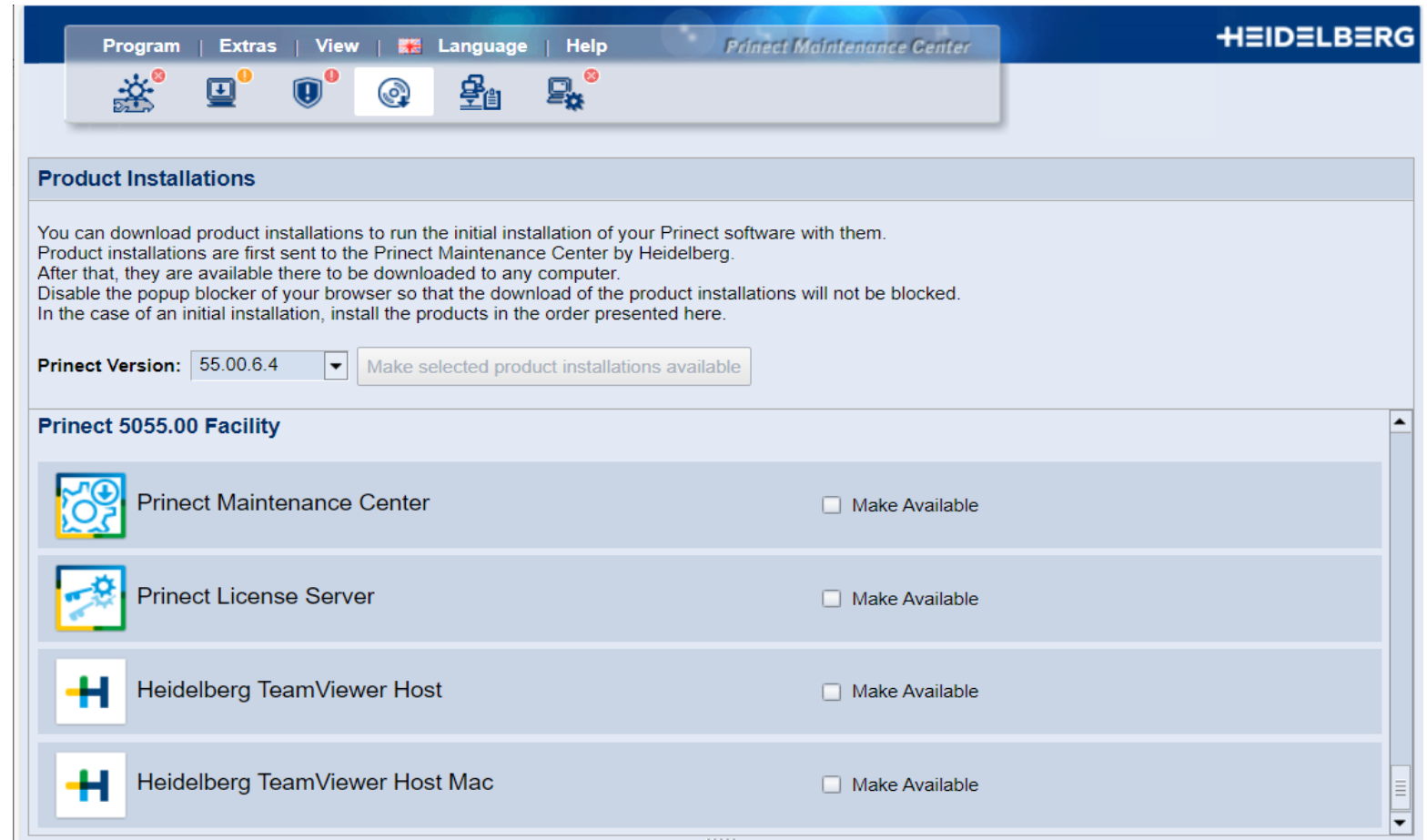


Significantly simpler and faster selection of required Signa resources

# Prinect CR – mit Team Viewer Host :

Software for secure and easy online-support – **MAC & PC**

- You can allow/deny unattended access for HEIDELBERG employees (Access securely managed via Active Directory + logged)
- Connection via dedicated router for HEIDELBERG
- strictest firewall rules



[Functions & Workflow \(prinect-lounge.com\)](http://prinect-lounge.com)

# Prinect CR. NEWS in a Nutshell

## 1. More security

- operating systems
- Prinect Portal

## 2. New devices

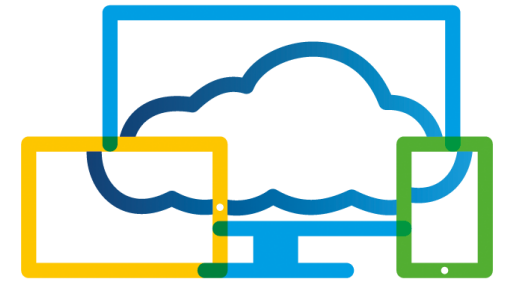
- Proofers
- a JETFIRE 50

## 3. Other new functionality

- b Interaction with Prinect Business Manager 7.31
- automated workflows
- c Signa Station

## 4. New with HEIDELBERG Customer Portal

- Print Shop Analytics
- NEW: Data Capture App
- NEW: Coating Workflow
- NEW: HyColor Assistant
- NEW: HEIDELBERG Academy



## 5. Multidot

# HEIDELBERG Customer Portal. Data Capture App – Early Install phase

DT\_KH78 DEV  
Data Capture / DT\_KH78

Operations Other activities

Search

Inner\_Text F16-06\_dd\_4x2 F16-6

**230412-111241\_DCA**

Job Name : DCA\_230412-111241  
Operation : Inner\_Text F16-06...

Start Time : -  
Planned Amount : 523  
State : DC.OPERATION\_C...

**230412-111241\_DCA**

Job Name : DCA\_230412-111241  
Operation : Aussen\_Cover F04...

Start Time : -  
Planned Amount : 523  
State : Planned predeces...

**230925-103802\_DCA**

Job Name : DCA\_230925-1038...  
Operation : Signature 8 pages ...

Start Time : 27/09/23 08:36 AM  
Planned Amount : 3077  
State : Paused

**230925-120959\_DCA**

Job Name : DCA\_230925-1209...  
Operation : Signature 16 page...

Start Time : 27/09/23 10:12 AM  
Planned Amount : 4610  
State : Planned predeces...

**230925-120959\_DCA**

Job Name : DCA\_230925-1209...  
Operation : Signature 8 pages ...

Start Time : 27/09/23 11:00 AM  
Planned Amount : 4610  
State : Planned predeces...

**230928-094855\_DCA**

Job Name : DCA\_230928-094...  
Operation : Signature 16 page...

Start Time : 30/09/23 05:41 AM  
Planned Amount : 5127  
State : Paused

**230928-094855\_DCA**

Job Name : DCA\_230928-094...

**230928-095303\_DCA**

Job Name : DCA\_230928-095...

Aborted

00 h 35 m 14 s

Total time

Good: Waste:  
0 / 523 0 / 33

Makeready Produktionslauf

Messages

Pause

DCA Fold - Downtime



# Prinect CR. NEWS in a Nutshell

## 1. More security

- operating systems
- Prinect Portal

## 2. New devices

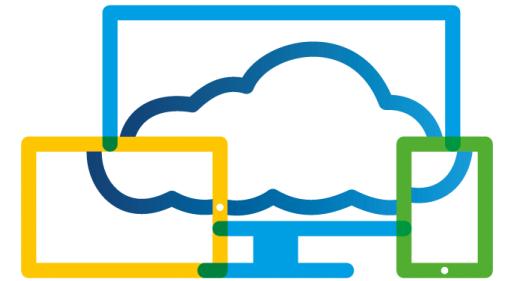
- Proofers
- a** JETFIRE 50

## 3. Other new functionality

- b** Interaction with  
Prinect Business Manager 7.31
- automated workflows
- c** Signa Station

## 4. New with HEIDELBERG Customer Portal

- d** Print Shop Analytics
- e** NEW: Coating Workflow
- NEW: HyColor Assistant
- f** NEW: Data Capture App
- f** NEW: HEIDELBERG Academy



## 5. Multidot

new Screening Technology now available



# 5 BENEFIT-DIMENSIONS WITH MULTIDOT 2.1





**1D.**

**CREATE  
QUALITY**



**2D.**

**CARE FOR THE  
ENVIRONMENT**



**3D.**

**STRENGTHEN  
THE BRAND**



**4D.**

**INCREASE  
EFFICIENCY**

1D.

2D.

5D.

REDUCE  
COSTS

INCREASE  
EFFICIENCY

3D.

# Multidot – current customer comparison vs. AM and Hybrid

	AM80er	HY120er	Multidot
<b>Color reproduction visually</b>	😊	😊	😊
<b>Brightness</b>	😊	😐	😊
<b>Contrast</b>	😊	😊	😊😊
<b>Depths</b>	😊	😊	😊😊
<b>Gray balance</b>	😊	😊	😊
<b>Homogeneity</b>	😊	😊	😊😊
<b>Smooth shades</b>	😊	😊	😊
<b>Details</b>	😐	😊	😊😊
<b>Moiré</b>	😞	😞	Evaluation tbd – (form not prone to moiré)
<b>Printing</b>	😊	😊	😊
<b>Color savings</b>	😐	😊	😊😊

Evaluated directly after calibration and first test prints

**Thank you  
for your attention!**