

Prinect Anwender-Tage

10. & 11. Oktober 2014

*Prinect Anwender Tage 2014*

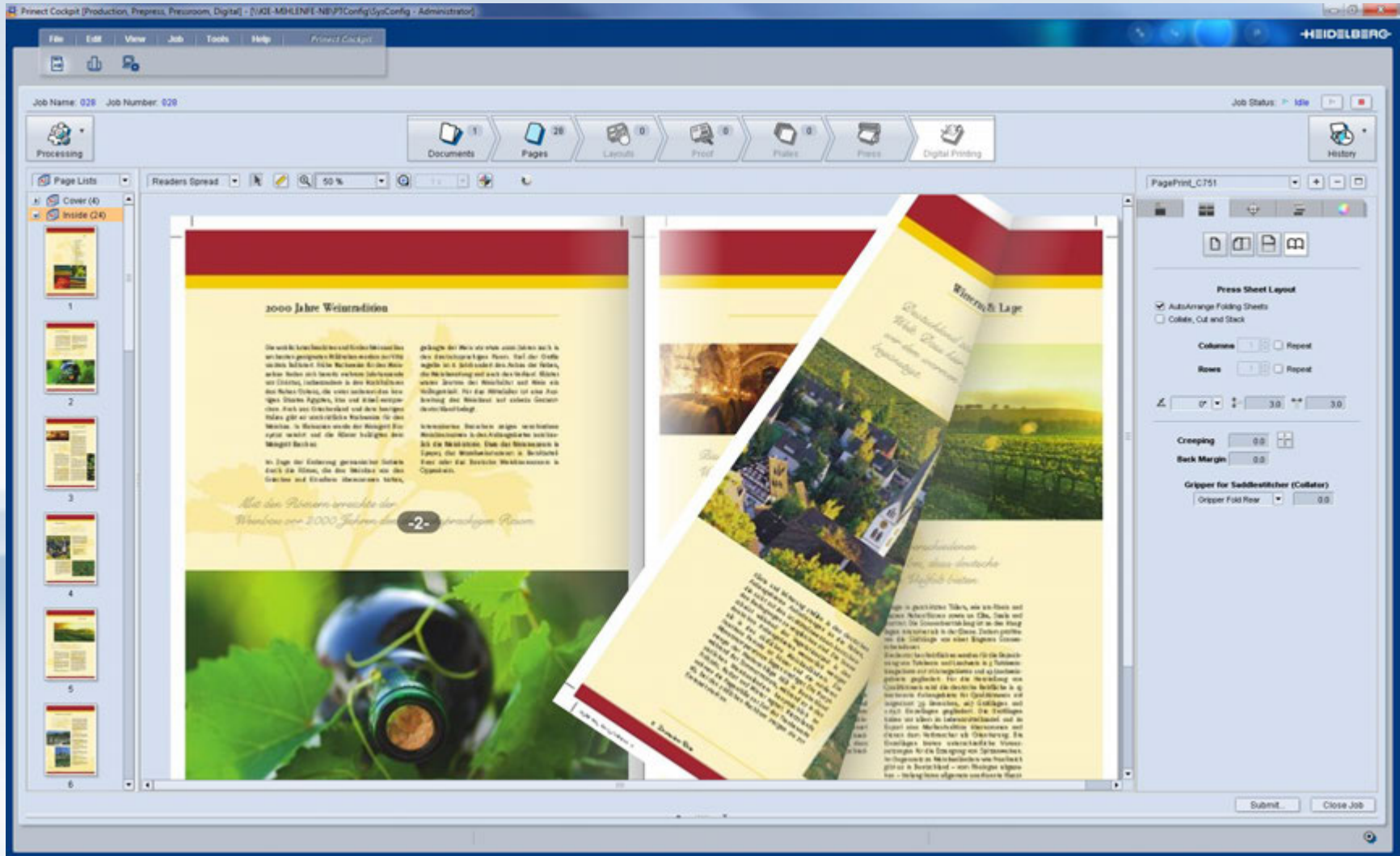
# Heidelberg Digital-Lösungen

Eberhard Voss, Mark Ihlenfeldt

**HEIDELBERG**



## Prinect Digital Print Manager v2015 Demo



# Linoprint CV – Commercial Value



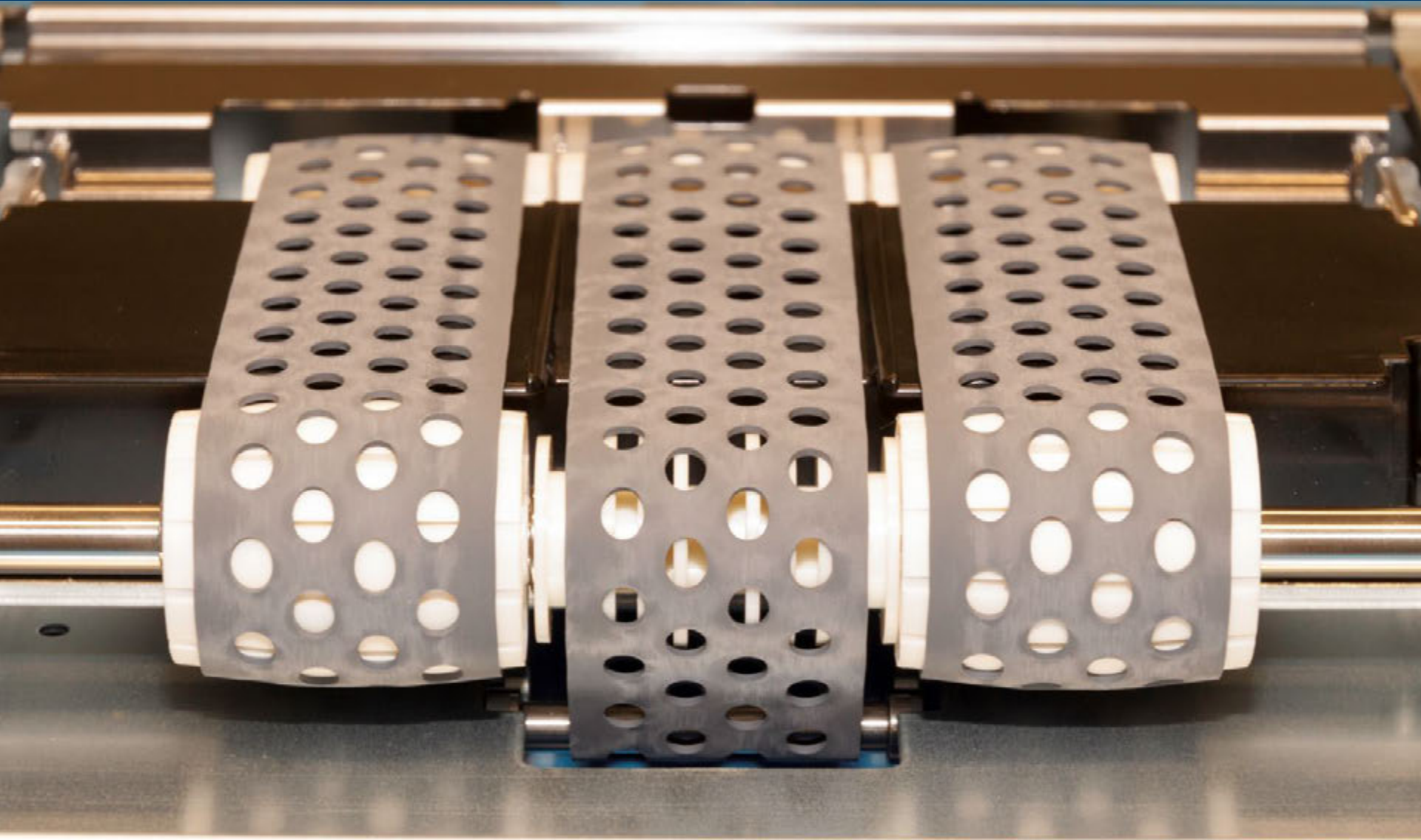
# Linoprint CP – Commercial Performance





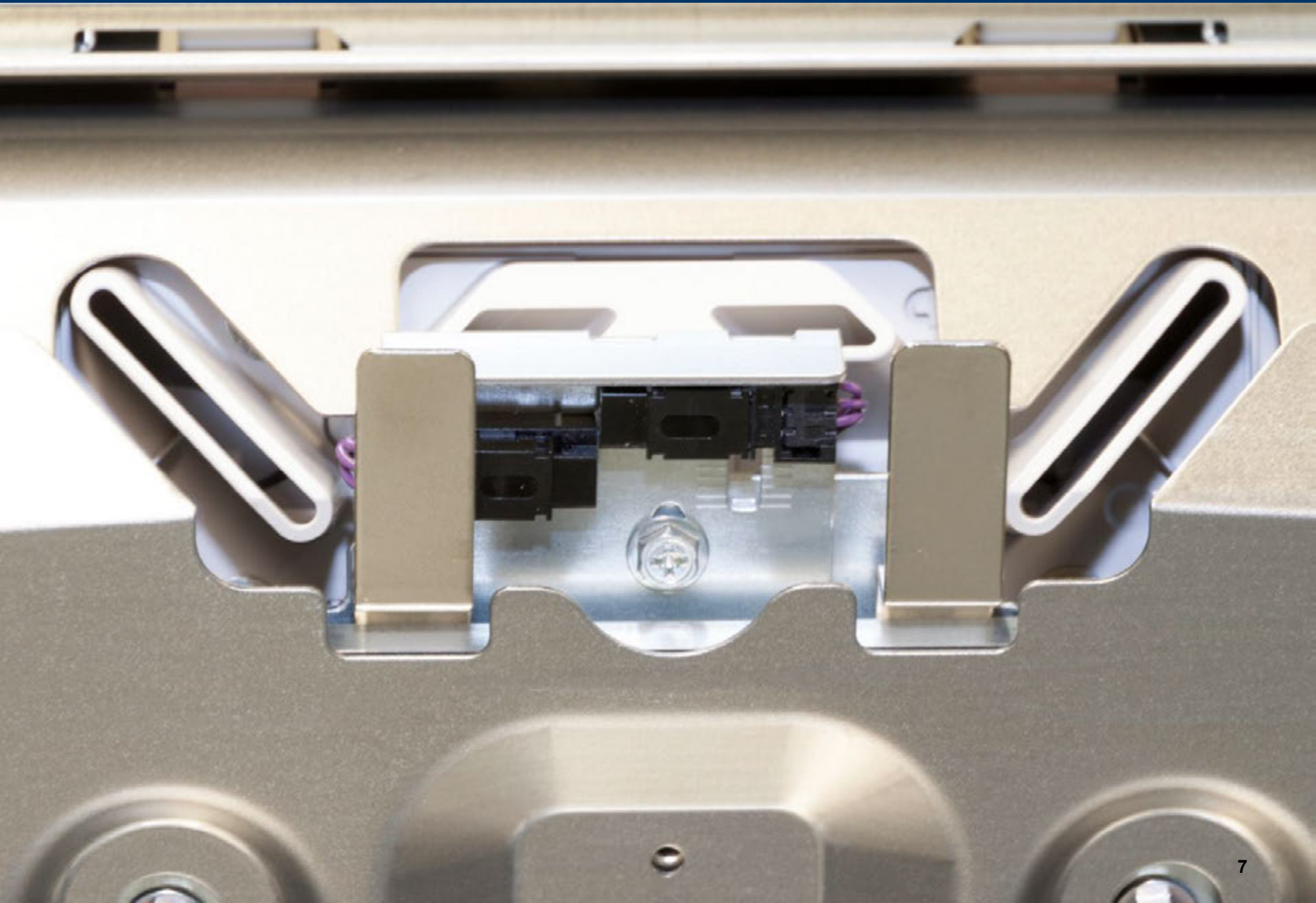


# Linoprint CV & CP – Vakuum Anleger

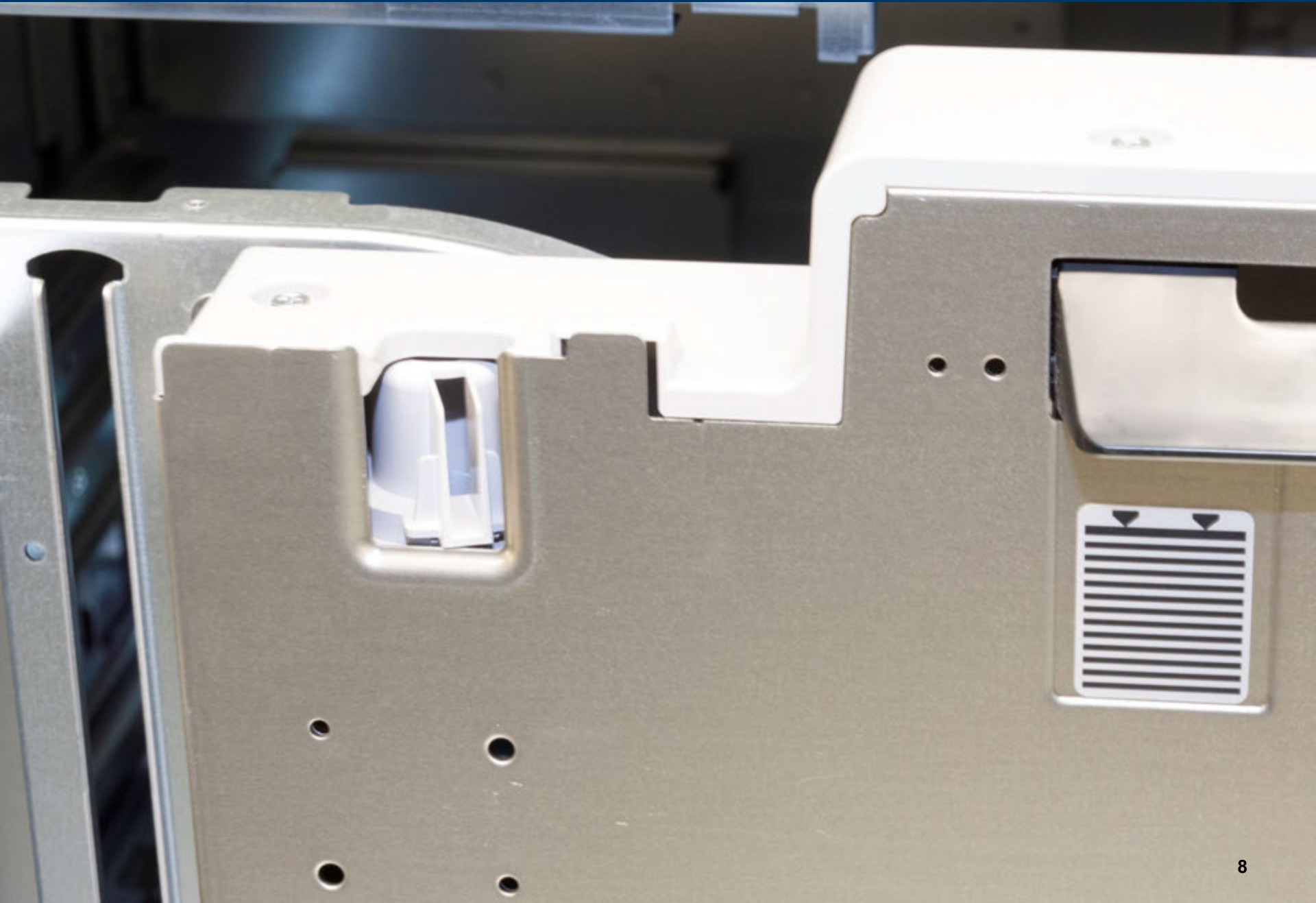




# Linoprint CV & CP – LCT Anleger mit Luftunterstützung



# Linoprint CV & CP – LCT Anleger mit Luftunterstützung





# Linoprint CV – 4C Toner Flaschen & 5te Farbe



# Linoprint CV – Lack-Toner (Clear) Flasche





# Linoprint CV with 5th color

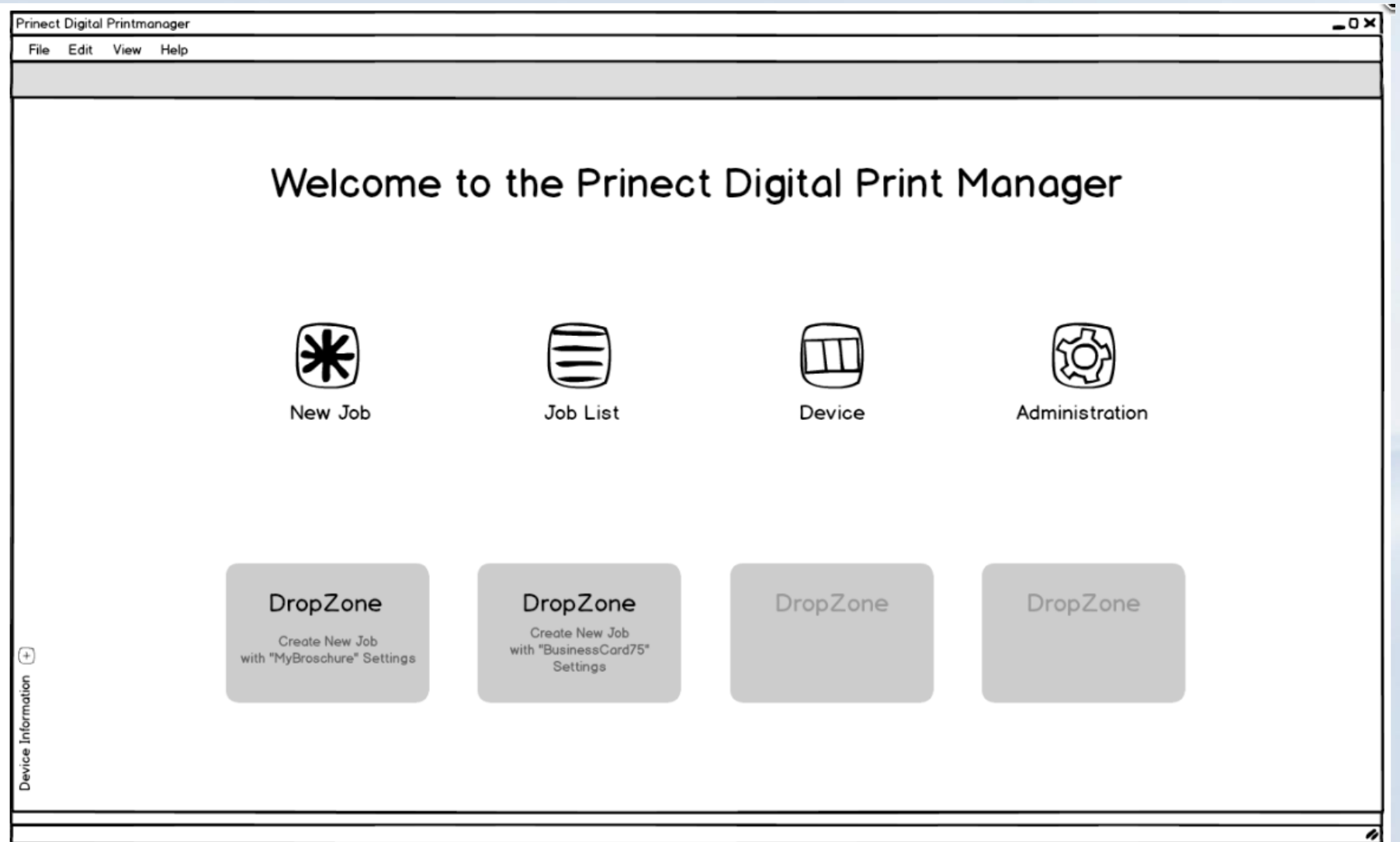




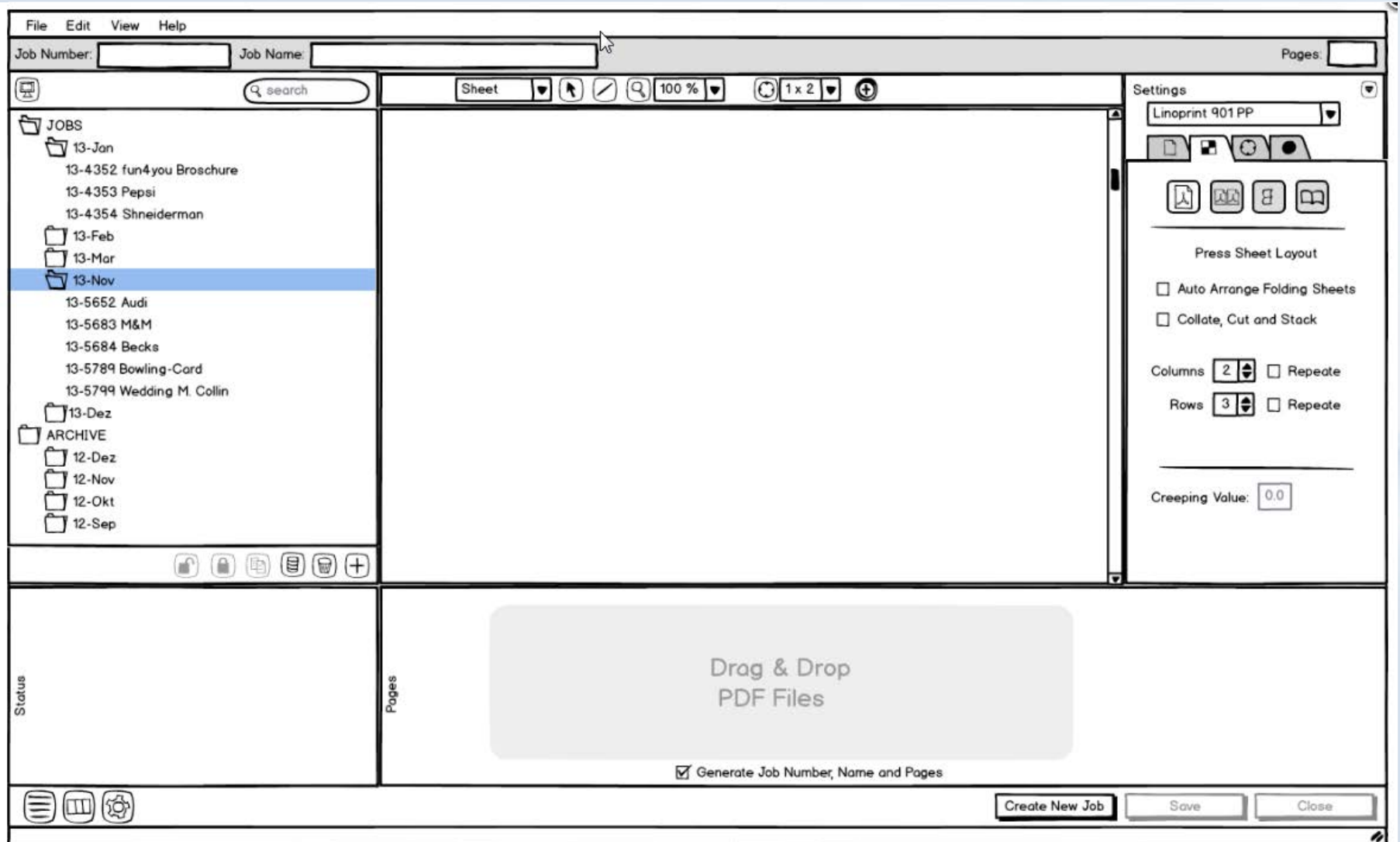
# Prinect DFE & Linoprint Station



# Prinect DFE (P2016)



# Benutzerinterface





# Arbeiten im Job

The screenshot displays a professional preflight software interface. At the top, the menu bar includes 'File', 'Edit', 'View', and 'Help'. Below it, the 'Job Number' is 13-5800 and the 'Job Name' is CC-Top.pdf. The page count is set to 8. The main workspace shows a 2x4 grid of page thumbnails. The top-left thumbnail shows a person icon, the top-right shows a person walking with horizontal lines, the bottom-left shows a house icon, and the bottom-right shows horizontal lines. A 'Sheet' toolbar is positioned above the thumbnails, and a 'Settings' panel on the right includes options for 'Linoprint 901 PP', 'Press Sheet Layout', and 'Creeping Value: 0.0'. A 'Status' panel at the bottom left shows a pie chart and summary: 8 Pages, 1 with Warning, and 1 with Error. A 'Pages' strip at the bottom center shows thumbnails numbered 1 to 7, with page 5 highlighted in blue. A 'Preflight Error' message on the right states: 'Font Zapfino is missing' and '2 Pictures only have 150dpi'. The bottom of the interface features buttons for 'Print...', 'Create New Job', 'Save', and 'Close'.

# Drucken eines Auftrages

The screenshot displays the Heidelberg RIP software interface for printing a job. The main window shows a job named "CC-Top.pdf" with 8 pages. A "Print" dialog box is open, allowing configuration of print parameters.

**Job Information:**  
 Job Number: 13-5800  
 Job Name: CC-Top.pdf  
 Pages: 8

**Print Dialog Box:**  
 Delivery quantity: 1  
 Page Range:  All  Pages  Sheets  
 Range:   
 Priority: Normal  
 Work Type: PrePrint

**Settings Panel (Right):**  
 Linoprint 901 PP  
 Press Sheet Layout  
 Auto Arrange Folding Sheets  
 Collate, Cut and Stack  
 Columns: 2  Repeat  
 Rows: 3  Repeat  
 Creeping Value: 0.0

**Job List (Left):**  
 JOBS  
 13-Jan  
 13-4352 fun4-you Broschure  
 13-4353 Pepsi  
 13-4354 Shneiderman  
 13-Feb  
 13-Mar  
 13-Nov  
 13-5652 Audi  
 13-5683 M&M  
 13-5684 Becks  
 13-5789 Bowling-Card  
 13-5799 Wedding M. Collin  
 13-5800 CC-Top.pdf  
 13-Dez  
 ARCHIVE  
 12-Dez  
 12-Nov  
 12-Okt

**Status Panel (Bottom Left):**  
 Status: 8 Pages  
 1 with Warning

**Page Thumbnails (Bottom):**  
 A row of page thumbnails is shown, with page 1 highlighted. The thumbnails are labeled 1 through 8. The labels for the first three pages are "CC-Top.pdf", "CC-Top.pdf", and "CC-Top.pdf". The label for the fifth page is "CC-Top Page 5 New.pdf". The label for the eighth page is "CC-Top.pdf".

**Buttons (Bottom):**  
 Print... Create New Job Save Close

# Warteschlangen Verwaltung

Prinect Digital Printmanager

File Edit View Help

**Print Jobs**

No	Pict	Name (job title)	Amount	Date
13-1611		Broschure Hollister	200	2013/9/23
13-1734		Golf PGA-	120	2013/9/23

Add job by Drag&Drop from Ready to Print Queue

**Ready to Print**

No	Picture	Name (job title)	Colors	Amount	Delivery	Paper	Date
13-1625		Broschure Founder & CEO	CMYK	40	500	ColorCopy	2013/9/2
13-1735		Wedding D. Laurent	CMYK	120	120	Planojet	2013/9/2
13-1987		A3 PhotoPrints-WebShop	B	17	50	ColorCopy	2013/9/2

**Details:**

No: 13-1611  
Name: Broschure Hollister

Paper: Planojet 170g  
Tray: [ 3 ]  
Amount: 200

ICC-Profile: ISOCoated\_v2.icc

Colors: C  
M  
Y  
K

Finishing: Finishing

Date: 2013/9/23

**Done**

No	Pict	Name (job title)	Amount	Date
13-1611		Broschure Hollister	200	2013/9/23
13-1734		Golf-PGA Cover	120	2013/9/23

**Operation Data:**

Work Break Maintenance

100% 97% 95% 82%

**PRINTING**

1 Color Copy A3+ ▼

2 Color Copy A3+ ▼

1 Color Copy A3+ ▼

4 Color Copy A3+ ▼



# Print Queue Management

**Aufträge zum Drucken**

Folgende Aufträge sind für den Druck vorbereitet und können per Drag & Drop oder den Start-Knopf in die Ausgabeliste geschoben werden.

Auftragsnummer	Bild	Auftragsname	Papier	Auflage	Geplante Zeit
14-5152		Audi Broschüre	ColorCopy 270g	350	14.07.14 18:30
14-5161		Coca Cola Poster	Planjet 300g	1540	13.07.14 17:30
14-5164		Mc Donalds Flyer	Planjet 300g	150	15.07.14 12:30

**Andromeda**

Die Drucker-Liste zeigt die zu druckenden Aufträge in der Druckreihenfolge. Die Aufträge können auch per Drag & Drop umsortiert werden.

Aufträge können per Drag & Drop aus den Auftragslisten (Aufträge zum Drucken oder Fertige Druckaufträge) in diese Drucker-Liste gezogen werden.

**Fertige Druckaufträge**

**Details**

Nummer: 14-5164  
 Name: Mc Donalds Flyer

Seiten: 2  
 Auflage: 150  
 Papier: Planjet 300g  
 Sequenz: Andromeda 2SFlyer

Geplante Startzeit: 15.07.14 12:30  
 Termin: 17.07.14  
 Profil: ISO 187262

**Gerätestatus**

100% 10% 35% 30%

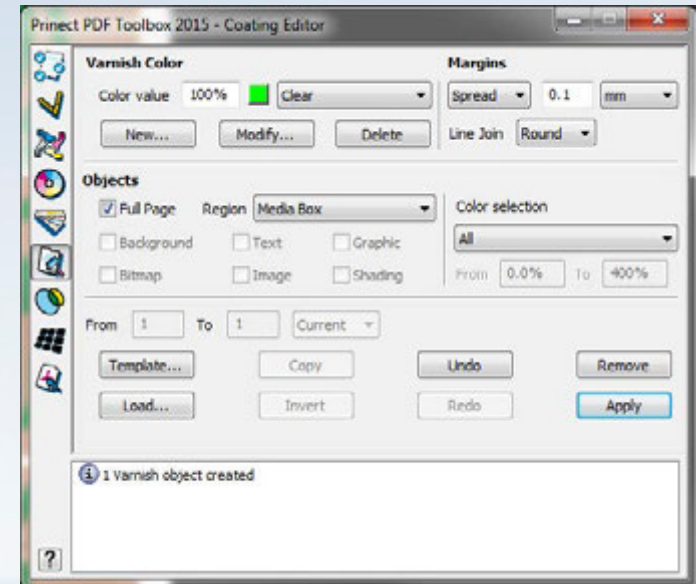
⚠️ **Wenig Toner**

- Color Copy 130g
- Plane Jet 80g
- SuperPaper 200g
- Color Copy 300g

978 von 981 Aufträgen      Kein Auftrag ausgewählt

# Prinect PDF-Toolbox – Coating Editor

- Tool for fast and easy generation of separate varnish separations
- Interactive generation of varnish forms on PDF documents
- Manifold selections of areas to be coated (Background, Image, Text, Graphics, Bitmaps, Images or Shadings)
- Path editor for coating areas with any polygons and curves
- Trapping of coated areas with round or mitered corners
- Saving of varnish layer as template for recurring jobs
- Inverted coating for corrections
- Restriction of the coated areas by color space and area coverage:
  - Varnish only for 100% Black for generating “rich black”
  - Varnish under spot color for enforcing the color effect
  - Varnish only on CMYK objects
- Choking/spreading of margins
- Coatings can have any color name e.g. white or clear



## Benefits

- Fast and easy generation of Varnish/Clear and White separation for Linoprint CV
- Increased productivity through intuitive handling and efficient solution of complex coating tasks



# Prinect Digital-Druck Module

Digital Print Connector  
(since P2008)

- Prinect **Digital Print Connector** is connecting all other digital print engines:

Canon



HP Indigo



NexPress



Xerox



Konica Minolta



Digital Print Manager  
(since P2012)

- Prinect **Digital Print Manager** for Linoprint C 751 & C 901:

Linoprint C 751



Linoprint C 901



Digital Frontend  
(starting P2016)

- Prinect **Digital Frontend** for Linoprint CV & CP

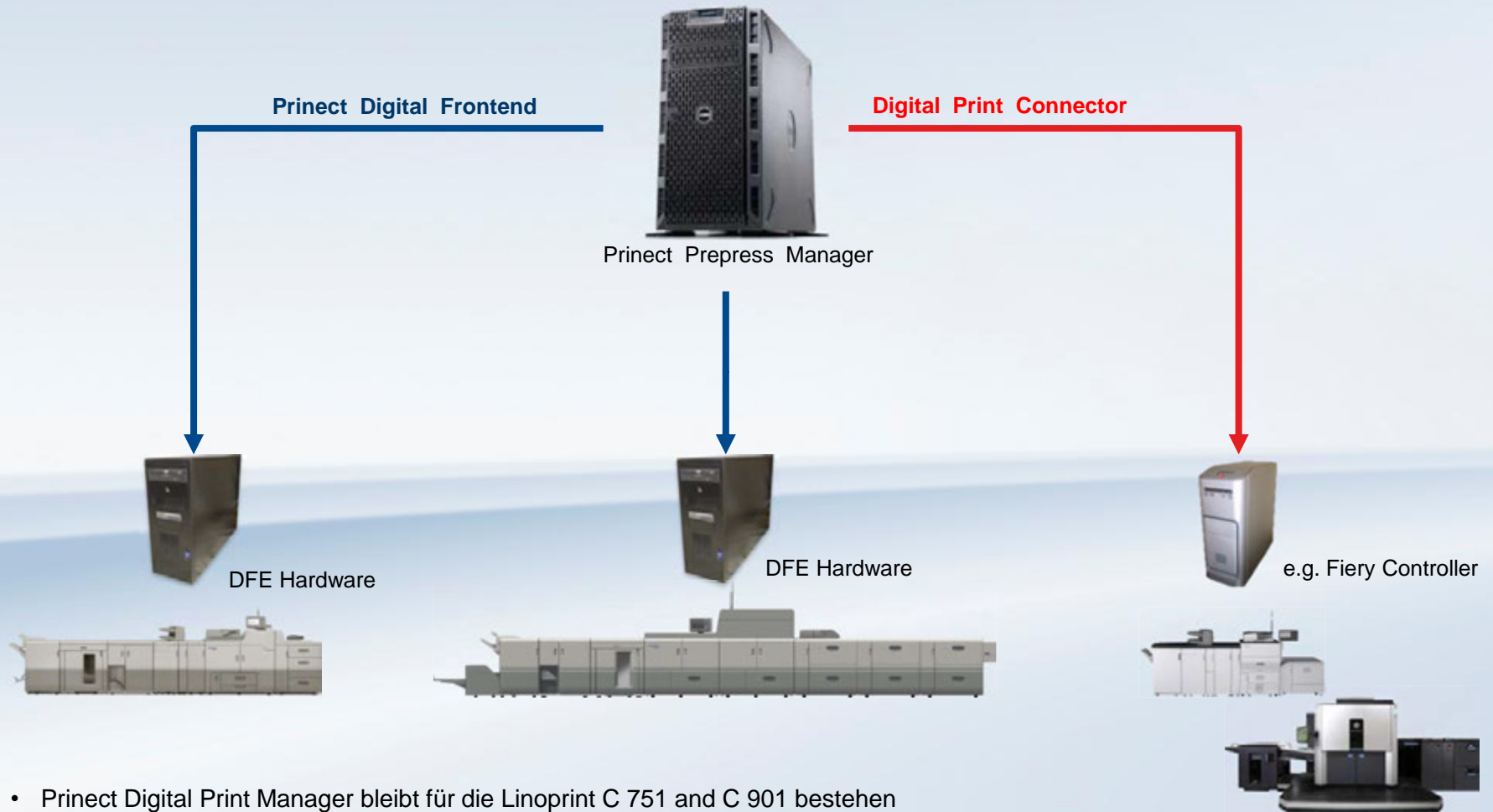
Linoprint CV



Linoprint CP



# Prinect – ein Workflow – viele Ausgabegeräte



- Prinect Digital Print Manager bleibt für die Linoprint C 751 und C 901 bestehen
- Prinect Digital Connector für Integrations Systeme für "nicht Heidelberg" Digitaldruckmaschinen Anbindung



Prinect Anwender-Tage

10. & 11. Oktober 2014

*International Prinect & Digital Sales Conference 2014*

Thank you for your attention!

**HEIDELBERG**

