



**WS 13 & WS 20  
Integrated Production 1:  
Prepress update including automated plate  
production with the Plate Pilot.**



■ ■ ■ Wiebke Stoltenberg ■

Prepress update including automated plate production with the Plate Pilot.

**A new way of printing.**

Better automation and usability

Ganged sheets optimized for your production

Plates on time for print start

Versioned production with easier checks

WORKSHOP

13



■■■ Wiebke Stoltenberg ■

Prepress update including automated plate production with the Plate Pilot.

**A new way of printing.**

Better automation and usability

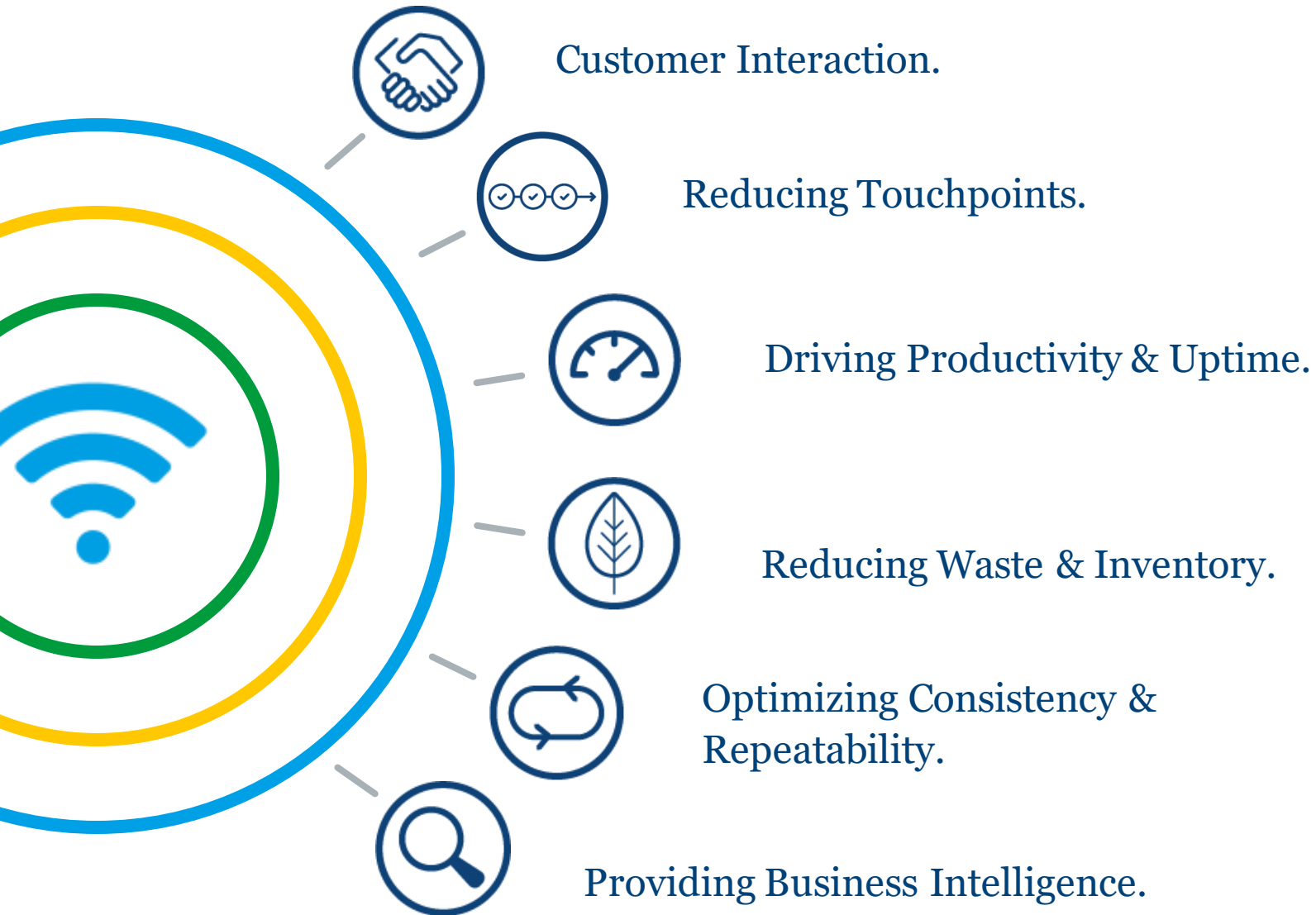
Ganged sheets optimized for your production

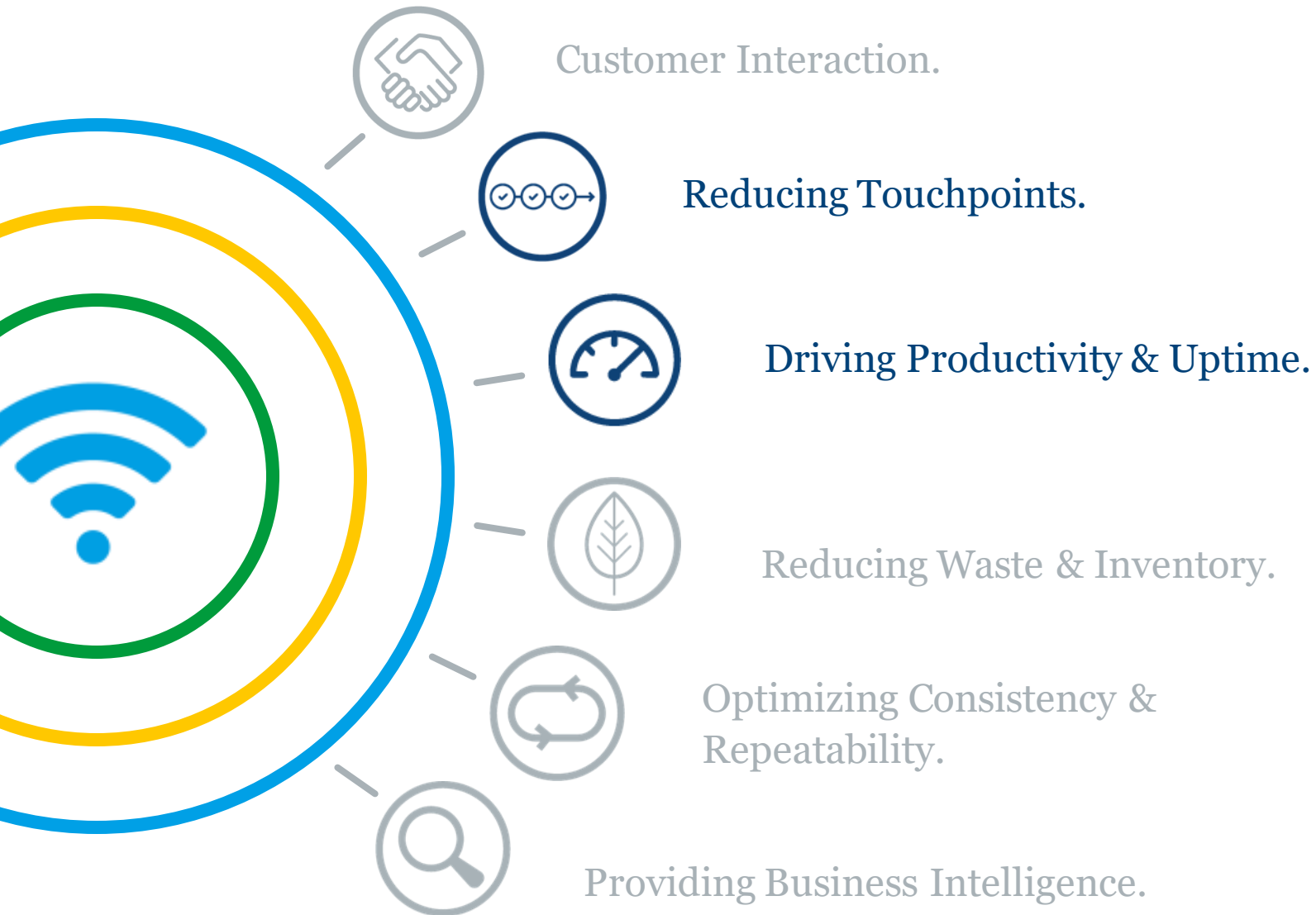
Plates on time for print start

Versioned production with easier checks

WORKSHOP

20







Ganging. Automatic gang sheet creation –  
fitting your production.





# Ganging.

## Gang form generation with automatic optimization.

- Gang job candidates put in gang pool
- Pre-set Gang Server
  - Picks candidates out
  - Optimizes gang forms
  - Rates them:
  - forms matching criteria forwarded
  - others dismissed, then disassembled and candidates put back to the gang pool





# Signa Station / Signa Server: optimization parameters



- Only One Press Sheet**
  - + Optimal result for the press sheet
  - some jobs may not be processed
- Delete Press Sheet with Red Rating**
  - + As many as possible “perfect” sheets
- Both options disabled**
  - + All imported jobs are processed
  - Press sheets that do not match your requirements 100% may be the result

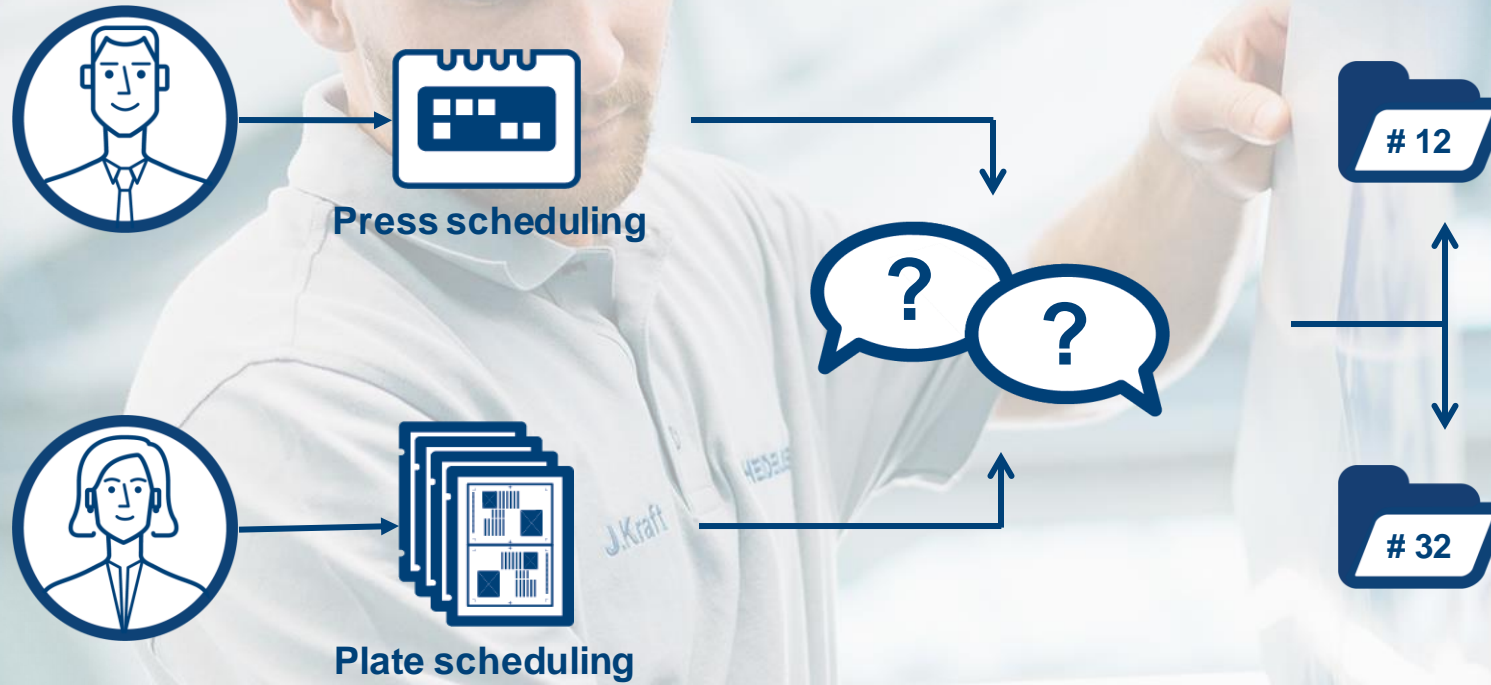




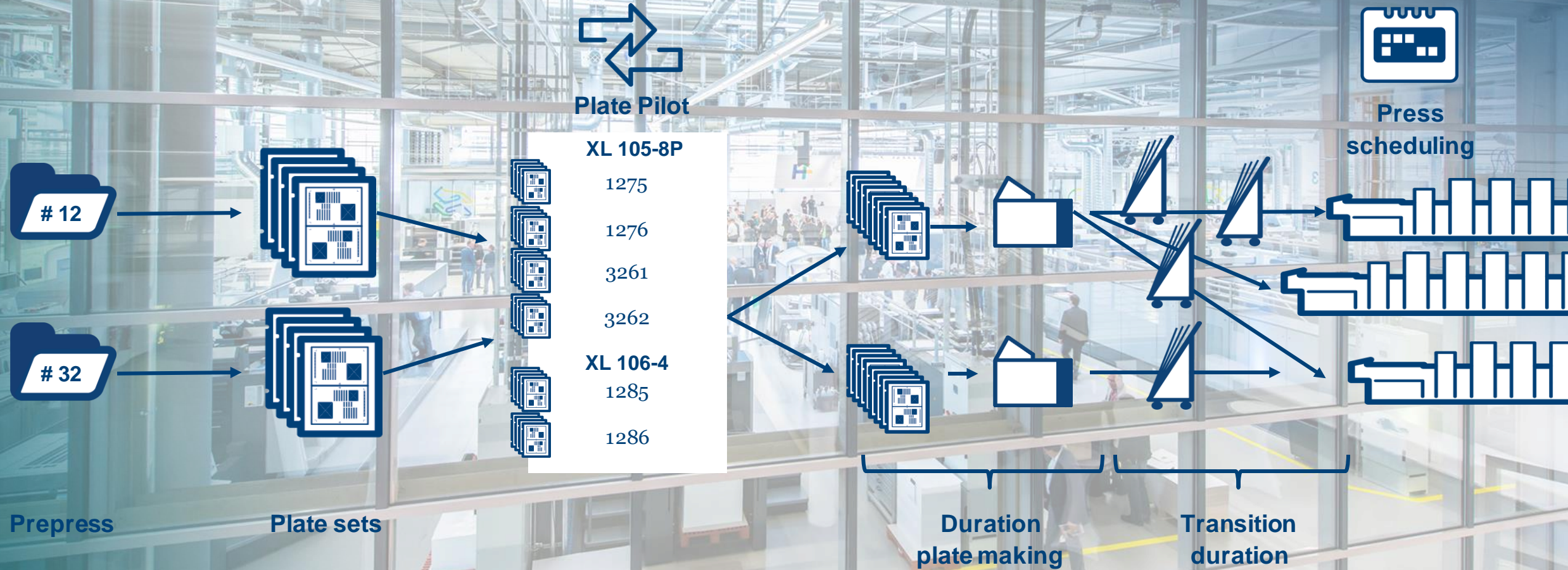
Plate Pilot. Push-to-Stop Plate Production.



# Daily ...



# Plate Pilot: Principle





How does Plate Pilot do this?





# Plate Pilot.

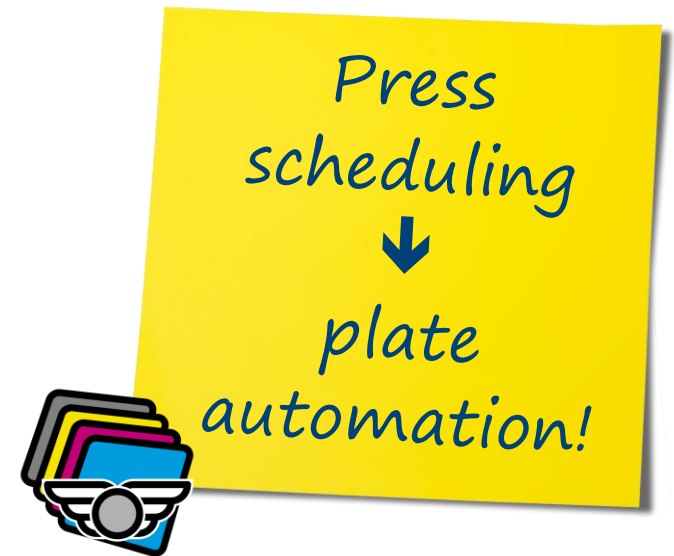
- Pauses prepress workflow after Tiff-Bs are rendered
- Automatic rule-based or manual creation of plate stacks according to printing start
- Batch-submission of plate sets to platesetter -> correct order of plates on trolley at the press
- Can be used for any platesetter (Suprasetter, Shooter, or 3rd party via external platesetter)
- Integrates with scheduler (or connected MIS)
- Signals status of plate setter with external lamp

## Automatic Plate Stack Creation

- Rule-based creation of plate stacks (printing start time, TIFFB-Availability)
- Considers stack size, recording and transportation time
- Relies on scheduled print work steps for correctly sorted plate stacks

## Automatic Plate Stack Recording

- Rule-based forwarding of plate stacks to free platesetter
- Most urgent plate stack is forwarded
- Somebody/something must take care of trolley change



**Organizes plate output according to press schedule.**



TIFFs sorted by schedule

Presses

Plate Pilot.  
Main Portal Widget.

Prinect Portal

Plate Pilot

HeiTest\_XL105-6-P2L

Druckmaschine

- Plattenstapel: (0) · Unbekannt  
Druckende: -
- HeiTest\_XL105-6-P2L (HeiTe...**  
Plattenstapel: (0) · Platten bereitstellen  
Druckende: -
- ME-XL105-10LPL (1670)  
Plattenstapel: (1) · Platten bereitstellen  
Druckende: -
- ME-XL105-8P (1580)  
Plattenstapel: (0) · Unbekannt  
Druckende: -
- ME-XL105-8PL (1680)  
Plattenstapel: (0) · Unbekannt  
Druckende: -
- SFP\_FriendlyName\_0 (SFP\_P...  
Plattenstapel: (0) · Unbekannt  
Druckende: -
- SFP\_FriendlyName\_1 (SFP\_P...  
Plattenstapel: (0) · Unbekannt  
Druckende: -
- SFP\_FriendlyName\_2 (SFP\_P...  
Plattenstapel: (0) · Unbekannt  
Druckende: -
- WpiTest\_CD102-8-PSL (4512)  
Plattenstapel: (0) · Unbekannt  
Druckende: -
- WpiTest\_SM74-5L (4522)  
Plattenstapel: (0) · Unbekannt  
Druckende: -

TIFF-B-Verfügbarkeit

Druckarbeitsgang-Informationen

- (Umschlag 6/6)  
Arbeitsgang: Umschlag 6/6  
Auftrag: **platepilot-job-2**(platepilot-job-2)  
Fälligkeitstermin: 20.12.18 13:20  
Layout: 05-Falzen\_Prinect 2005 Broschüre Sheetfed  
Bogen: Umschlag (Umschlag) Druckbeginn: -  
Farben: BCMY/HP/- Gruppenname: TJL
- (Innenteil\_1 4/4)  
Arbeitsgang: Innenteil\_1 4/4  
Auftrag: **platepilot-job-2**(platepilot-job-2)  
Fälligkeitstermin: 20.12.18 13:20  
Layout: 05-Falzen\_Prinect 2005 Broschüre Sheetfed  
Bogen: Innenteil\_1 (innenteil\_1) Druckbeginn: -  
Farben: BCMY/BCMY Gruppenname: TJL
- (Innenteil\_2 4/4)  
Arbeitsgang: Innenteil\_2 4/4  
Auftrag: **platepilot-job-2**(platepilot-job-2)  
Fälligkeitstermin: 20.12.18 13:20  
Layout: 05-Falzen\_Prinect 2005 Broschüre Sheetfed  
Bogen: Innenteil\_2 (innenteil\_2) Druckbeginn: -  
Farben: BCMY/BCMY Gruppenname: TJL

Plattenstapel

Druckplatten Verfügbarkeit

Stapel-Informationen

Information

- (000062)  
Druckbeginn: - Druckende: -  
Auftragsnummer: **platepilot-job-1**  
Belichtungszeit: 0 Minuten  
Druckmaschine: ME-XL105-10LPL (1670)  
Plattenbelichter: PlateSetterSB1  
Plattenwagen: Mein Plattenwagen

Plattenbelichter

Maschine

Information

PlateSetterSB1

Aktuell: - (-)  
Druckmaschine: - (-)  
Platten: - (-)  
Belichten

Plattenstapel erstellen

Neu berechnen

Akzeptieren

Plattenstapel belichten

Plate stacks

CtP devices



## Pilot Lamp. Remote Status Signal.

- Standard electric bulb controllable via WLAN (currently Philips Hue)
- Signals platesetter status “anywhere” in the print shop:  
Error, waiting, idle, recording
- Configurable with Plate Pilot
- Several lamps supported
- Assign lamp to one or more platesetter





## Pilot Lamp. Remote Status Signal.

- Standard electric bulb controllable via WLAN (currently Philips Hue)
- Signals platesetter status “anywhere” in the print shop:  
Error, waiting, idle, recording
- Configurable with Plate Pilot
- Several lamps supported
- Assign lamp to one or more platesetter



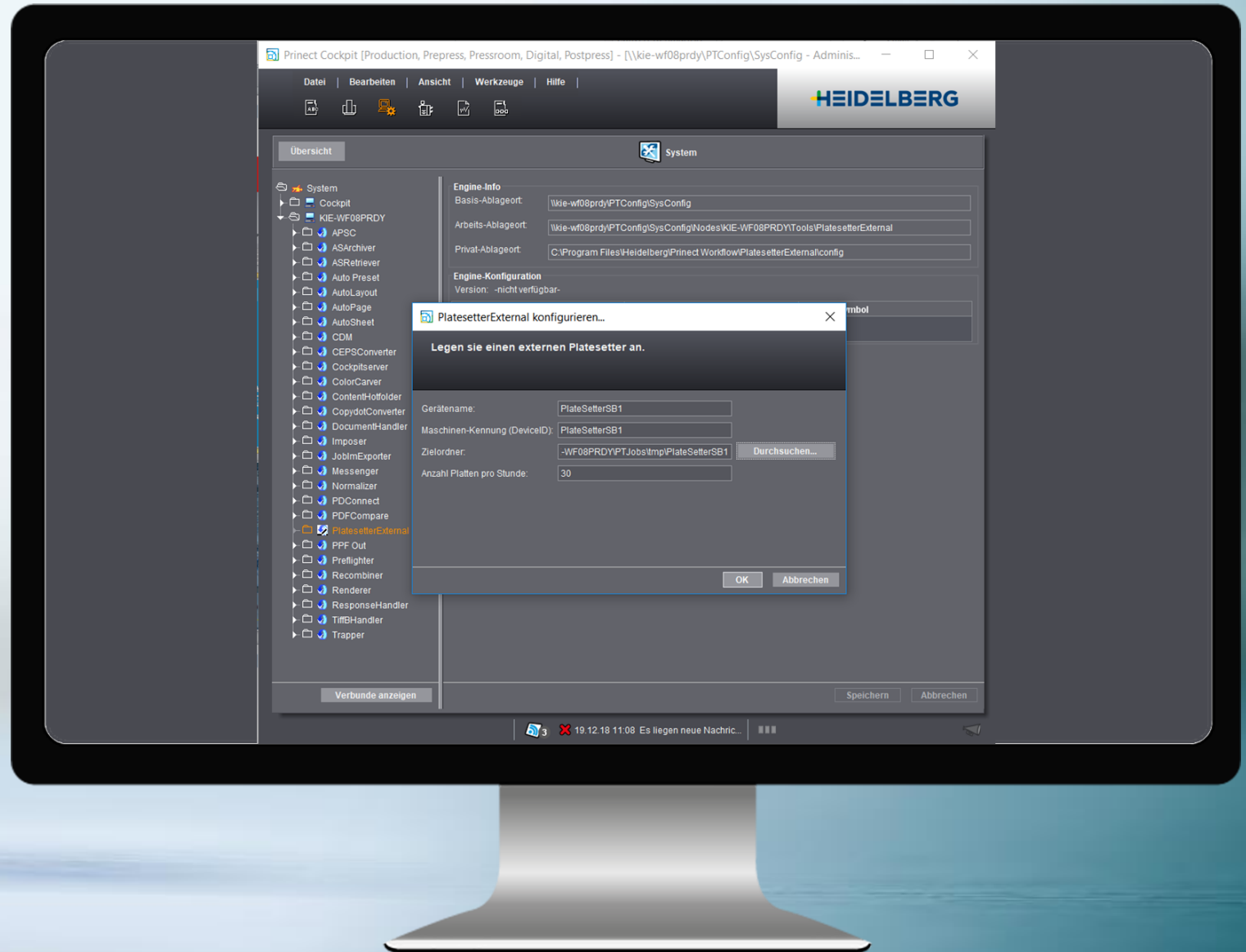
**Signal platesetter status  
anywhere in the print shop.**





# Prinect Plate Pilot 2020 Improvements.

- Activation
- View-Only-Mode
- Use selected platesetters only
- Configuration of external platesetters
- Bypass the Plate Pilot





# Prinect Plate Pilot 2020 Improvements.

## → Utilization

→ Re-render Tiffs when press schedule changes

→ Pre-defined work- and accounting types for plate remake

→ Pause/Resume platemaker queues

→ Mobile Widget for platemaker control





# Prinect Plate Pilot 2020 Improvements.

## → Convenience

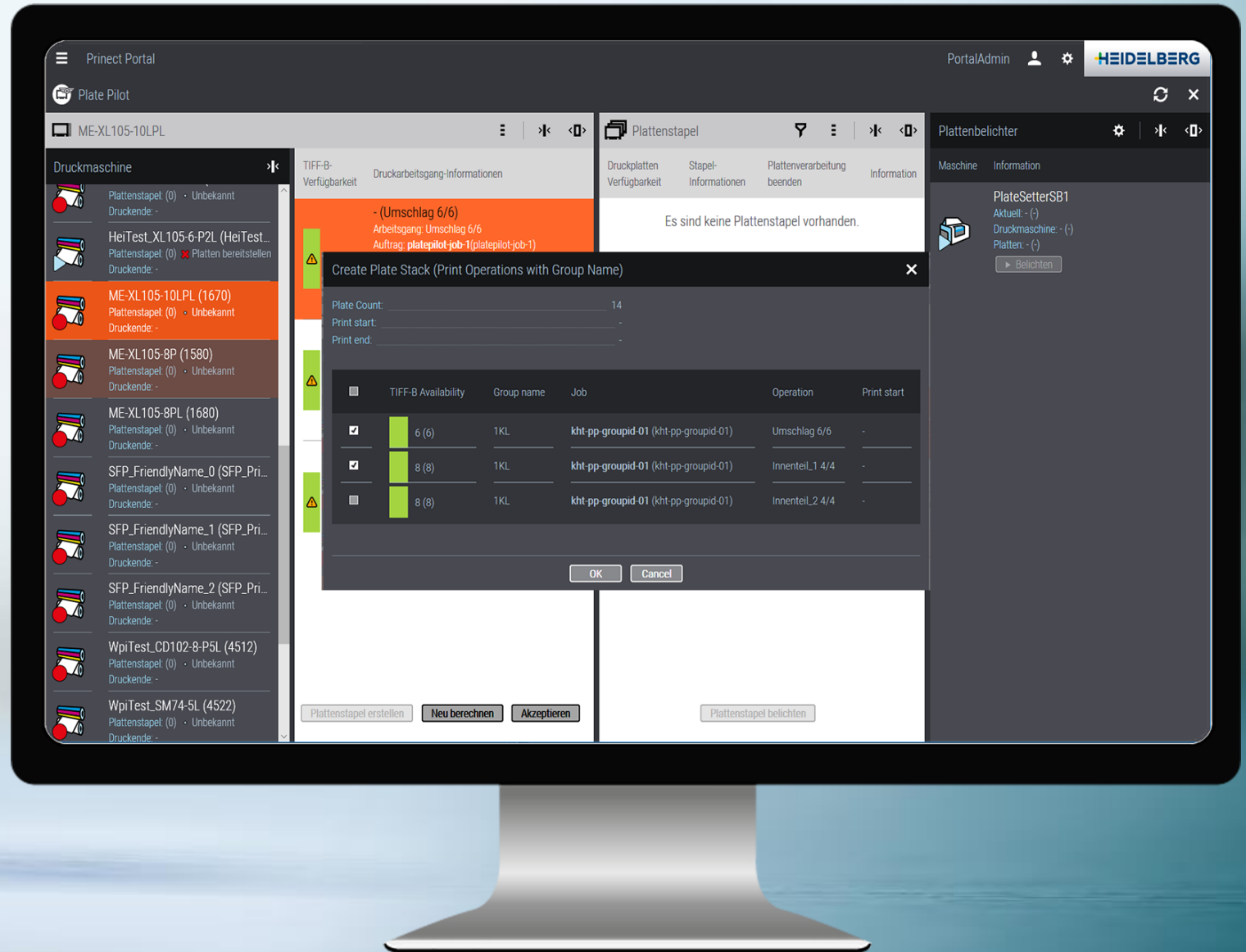
→ Improved sorting of work steps

→ flexible plate stack creation

→ One-click plate stack release

→ Group versioned sheets into one plate-stack

→ Obey Scheduler work step grouping





Live  
demonstration.



Versioning – checks made easier.





Plate Pilot.

## Versioned jobs from MIS to Finishing.

- Data Optimization
- Impositioning
- Plate + Proof output
- Print
- Finishing



## BUSINESS MANAGER

### Job generation

#### Versioned Job

- English
- German
- French
- ...

## PREPRESS MANAGER

### Data Optimization

- Split + Check and Optimize Pages

### Impositioning

- Versioned Layouts (sev. lang. / sheet)

### Output

- Versioned Proofs (check base and language)
- Plates

## PRESSROOM MANAGER

### Printing

- Versioned print (text layer plate change)

## POSTPRESS MANAGER

### Finishing worksteps for

- Cutting
- Folding
- Binding



Plate Pilot.

## Versioned jobs from MIS to Finishing.

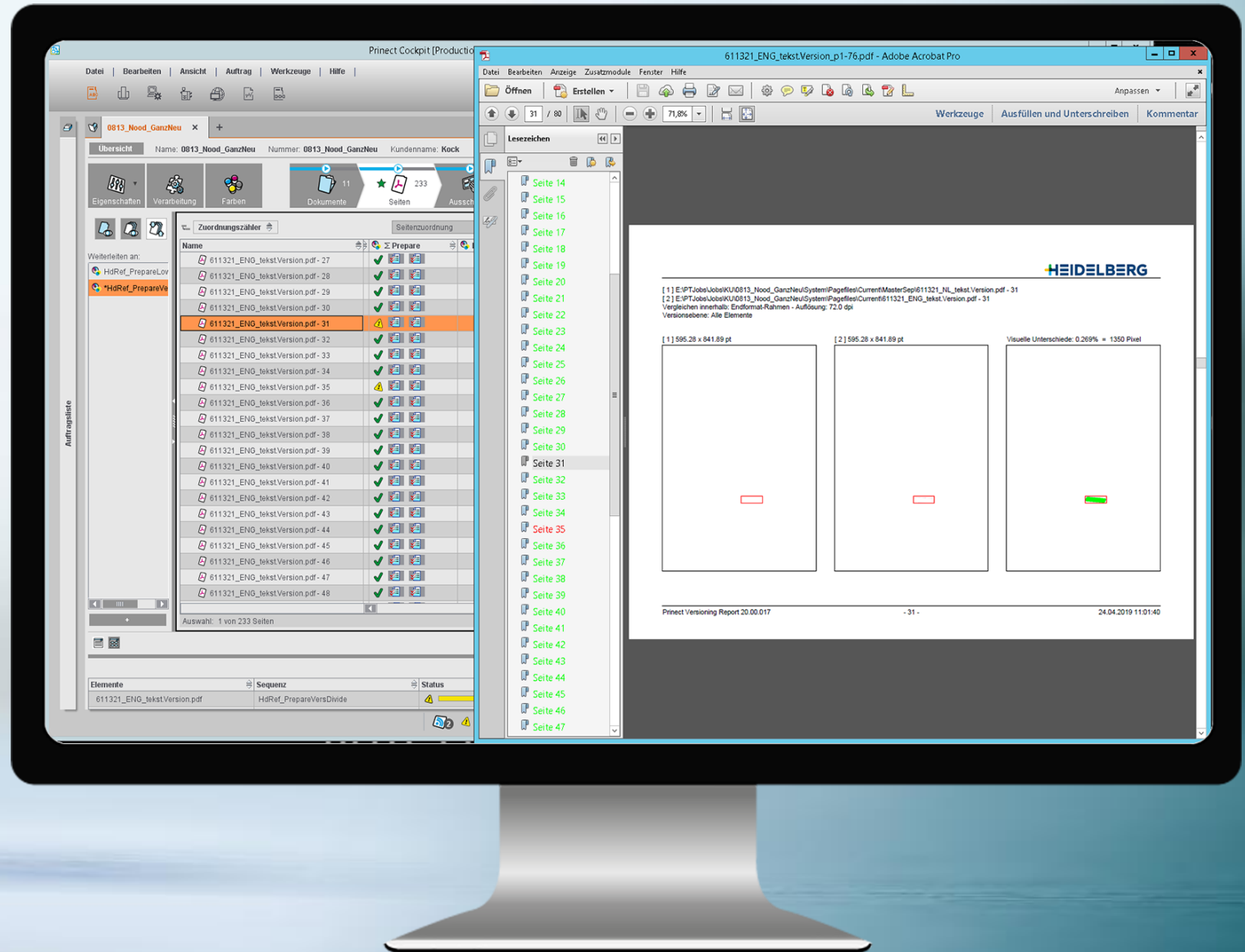
- With remote approval, scheduling, and finishing – further improvements based on user feedback
- Business Manager provides versioning info utilized in Prinect
- Planning Assistant helps if MIS doesn't / no MIS delivers info





# Versioning checks – more comfortable.

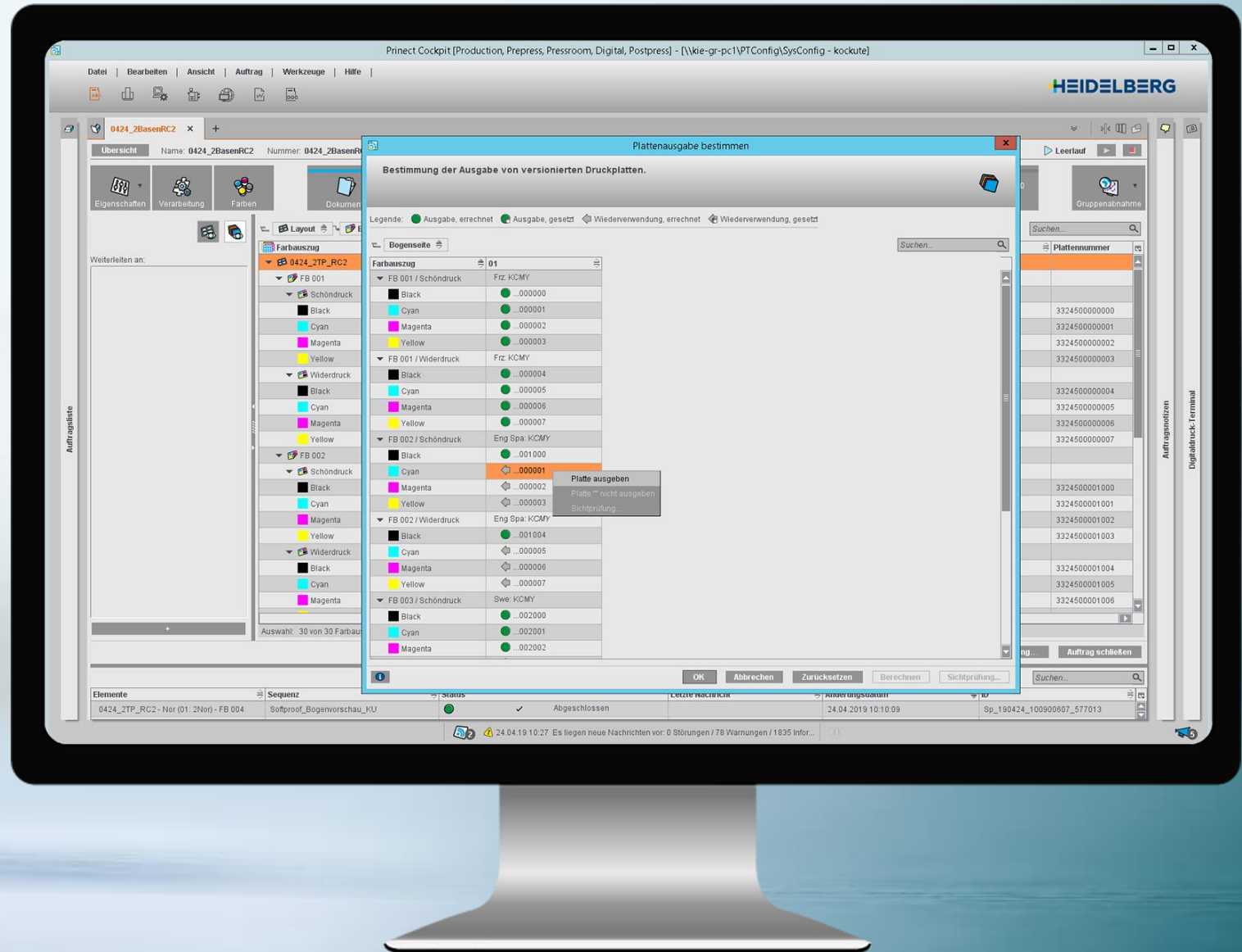
- Versioning Report shows issues “per page”
- Versioning Assistant can be opened from Pagelists in Cockpit
- Pagelists of different Versions can be checked from there (same length, all positions available)





# Versioning – Plate reuse calculation.

- Can be opened from Separations View now
- Gives warning in case of missing previews
- Compares inside trim box, only
- Tolerance for comparison is increased
- Results can be corrected





Live  
demonstration.



Workflow solutions for Business and Production.  
**Prinect. Driving the Smart Print Shop.**



Thank you very much for your attention.  
**We are happy to answer your questions.**