

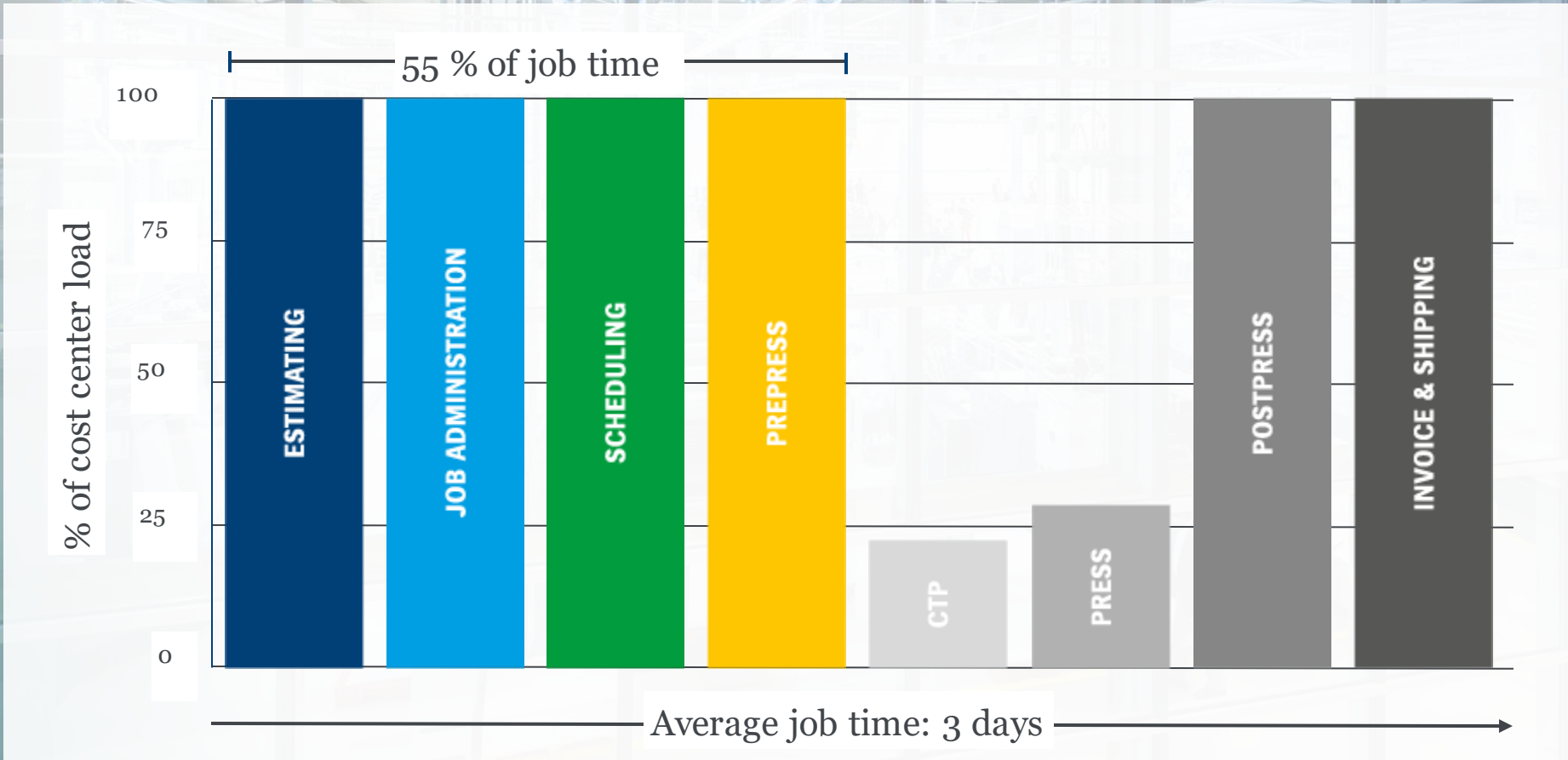
INTERNATIONAL
PRINECT USER DAYS

Heidelberg News
Axel Zöller



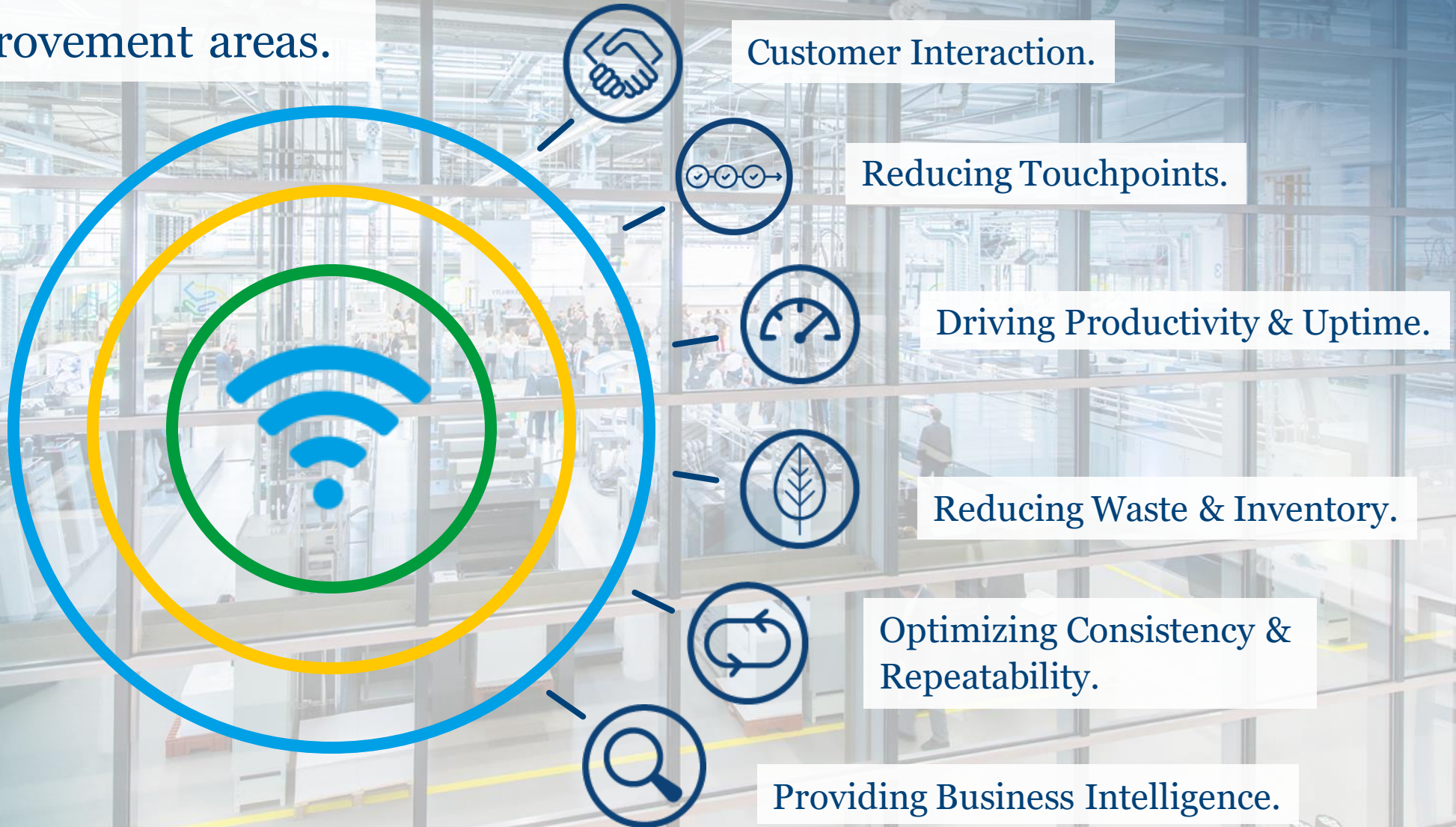


Smart Print Shop – where to improve?





Driving the Smart Print Shop – the six key improvement areas.





We want to further improve our offerings to you.
Prinect goes subscription.



Your Return on Investment.

Prinect Production Manager.



Prinect Business.
Commercial.



Integrated hardcover book production.

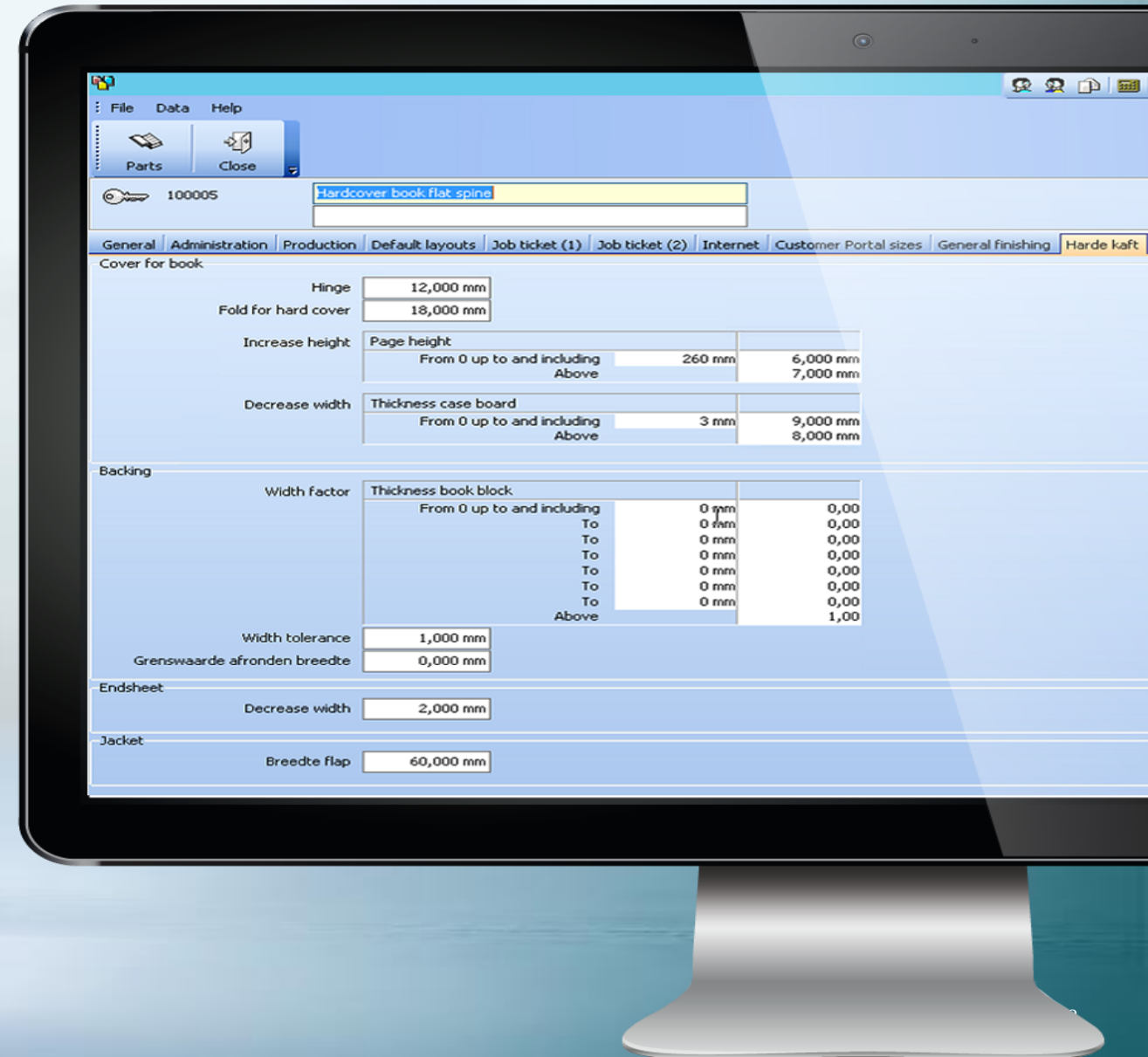
- MIS released in December 2018
- Production released in June 2019
- 80% is implemented by then, will be extended in the following versions





Supporting not only hardcover with Prinect MIS.

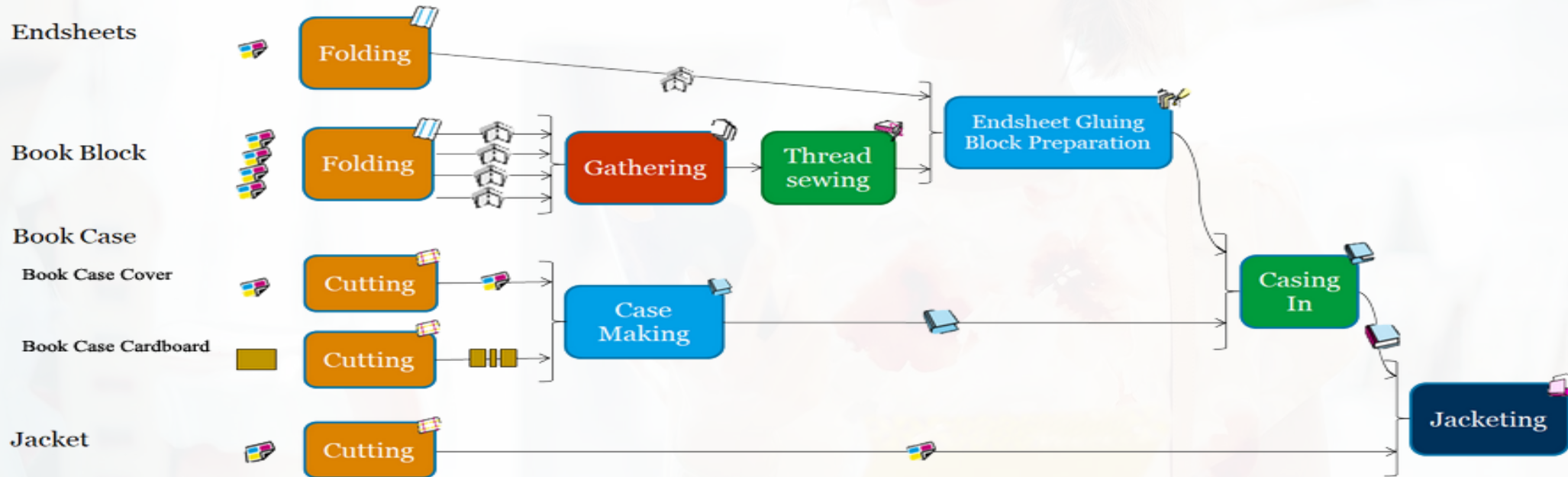
- Extended product pre-configuration
- Tailored automatic estimating for books
- Extended folding scheme handling





Flexible process net for hardcover demands:

provide proper process net for take over by Prinect production.





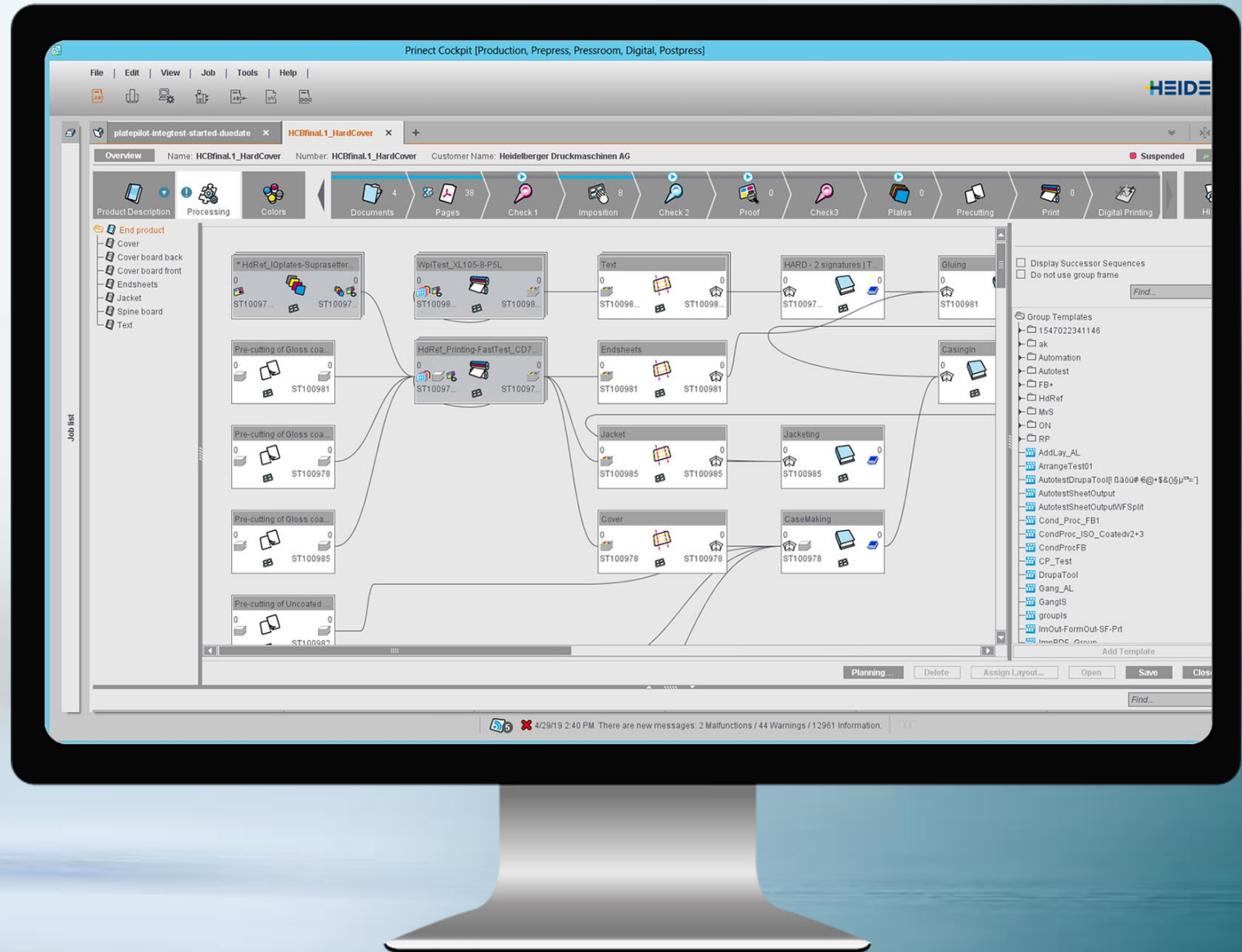
Improved material handling for books.

- More intelligence for calculation of material consumption
- Supports multiple materials per process



Automated take over in Prinect Production.

- Product Parts with planned quantities
- Complete Process net
- Imposition layout creation based on definition in Prinect Business
- Without Prinect Business manual creation via Planning Assistant





Further improvements in Prinect Business Manager and integration.

- Higher flexibility and automation for cutting processes
- Improved Cutstar support
- Improved integration features like:
 - Different page sizes on one sheet
 - Flexible sheet name predefinition
 - Ganging for generic products
- Prinect Installer and Prinect Maintenance Center now also for Prinect Business



Prinect Production.
Commercial.



Prinect Webshop.

Entry Level Web Shop

- For the immediate start
- For standard products and processes
- Range of features “out of the box”
- SaaS solution easy to manage

Market introduction

- Customer introduction phase successfully completed

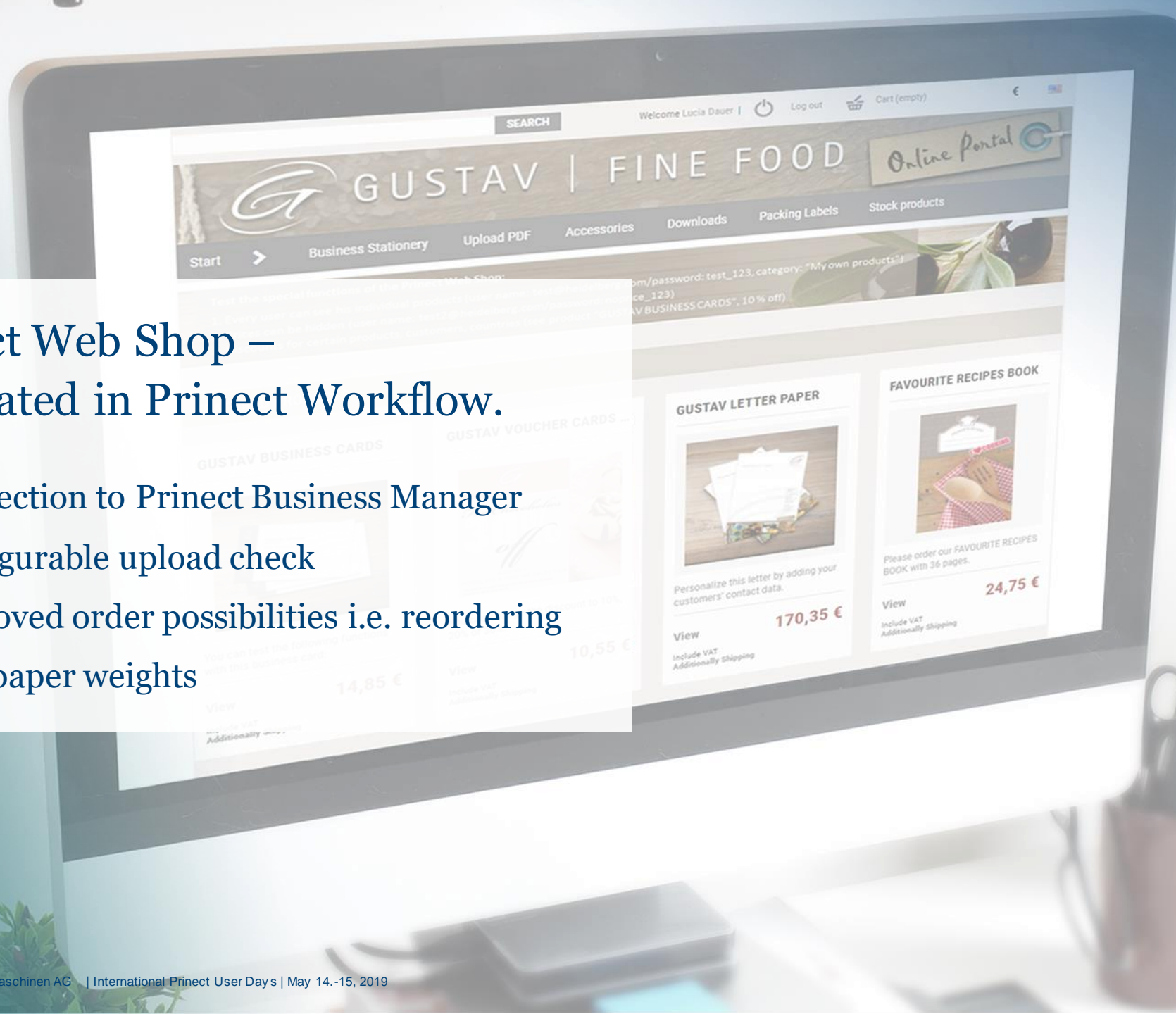
Integration possibilities

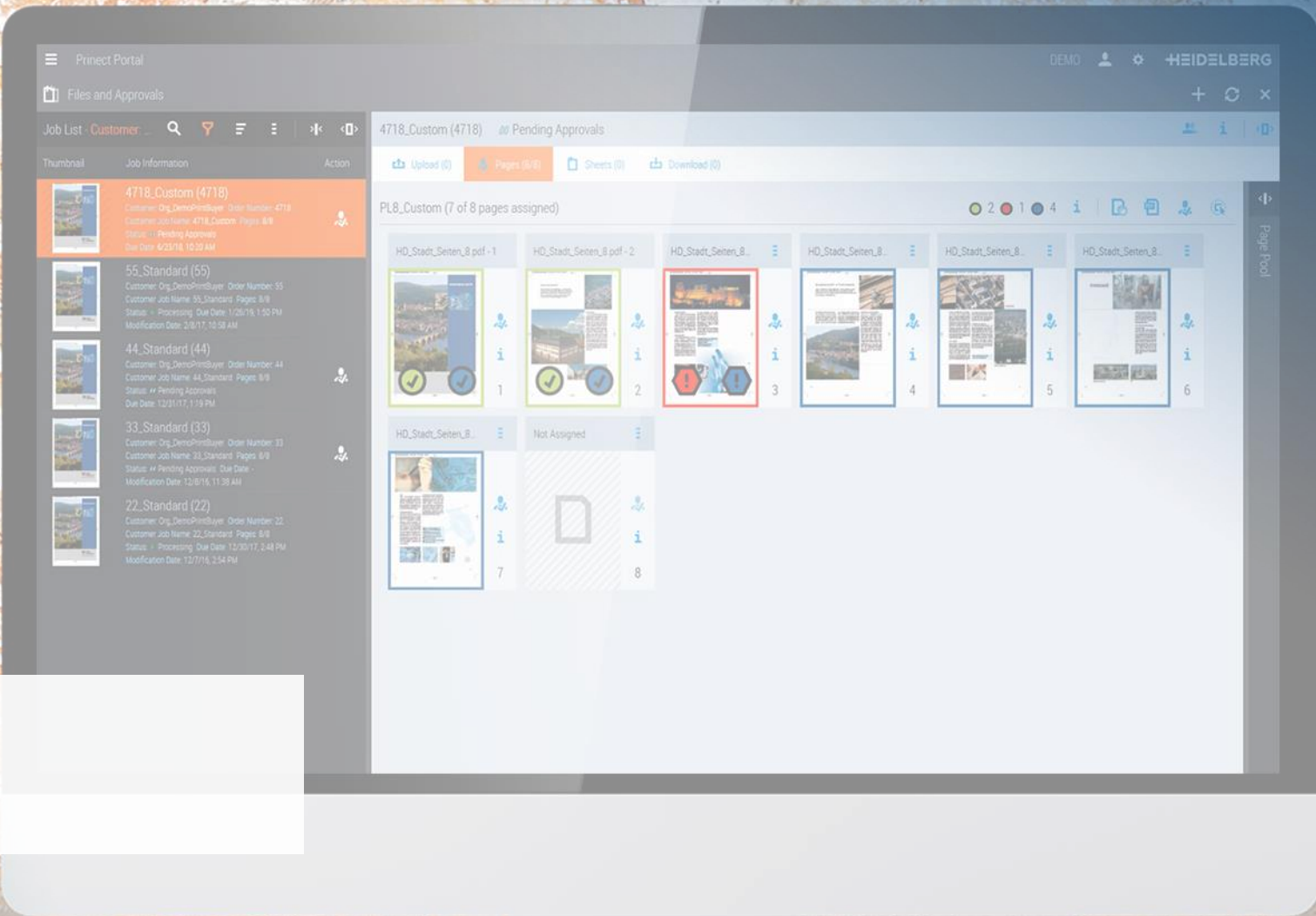
- Up to 20 Shop(s) via Web-to-Print Connector
- Integration into Prinect Production and automation with Smart Templates
- New: Connection to Prinect Business Manager



Prinect Web Shop – integrated in Prinect Workflow.

- Connection to Prinect Business Manager
- Configurable upload check
- Improved order possibilities i.e. reordering
- Two paper weights



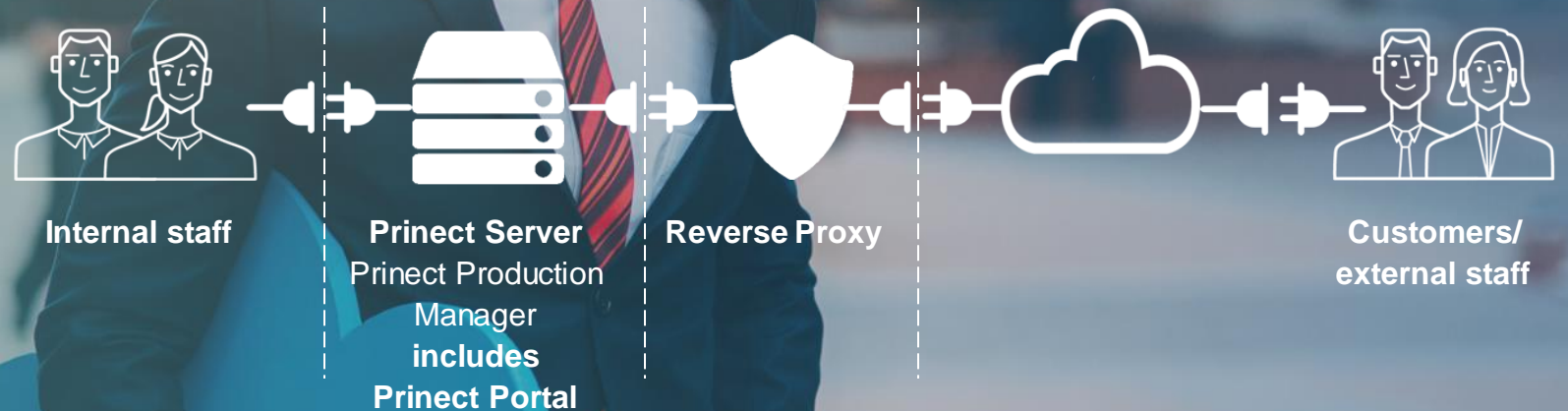


Princt Production. Portal.



Prinect Portal: all inclusive.

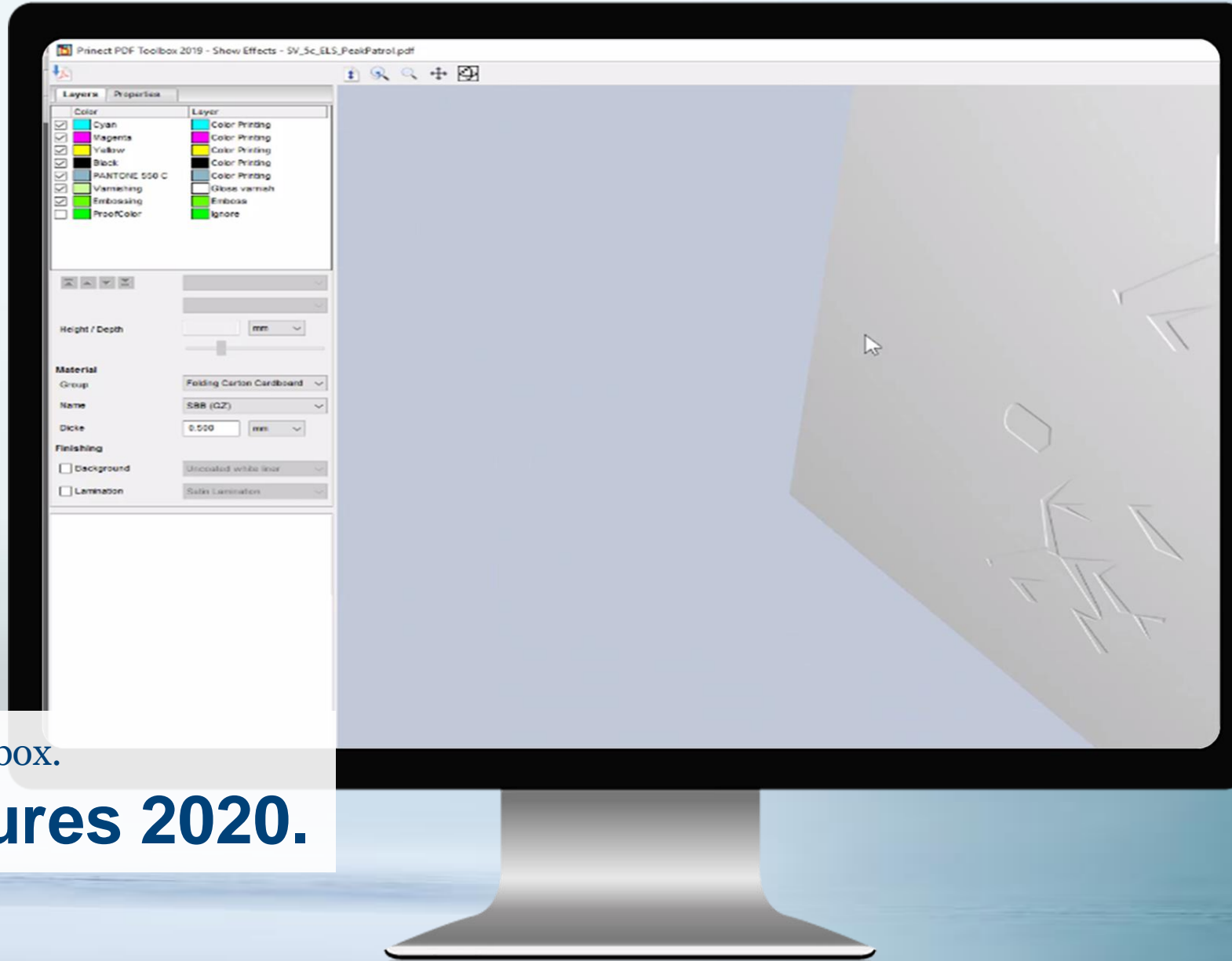
- Prinect Portal is included in Prinect Production Manager.
- Internal use only: Prinect Portal infrastructure runs on the Prinect Server.
- Internet access: Reverse Proxy server for security reasons.



Prinect Portal.

- **Efficient, simple to use online communication.**
 - Between customers and production (Prinect Production Manager).
 - Between customers and sales (Prinect Business Manager).
 - Between external sales, internal sales and production (Prinect Business Manager, Prinect Production Manager).
- **Improved Upload- and Approval Workflows**
 - Roles Data Deliverer and Reviewer





Princt PDF Toolbox.

New features 2020.



Automated take over in Prinect Production.

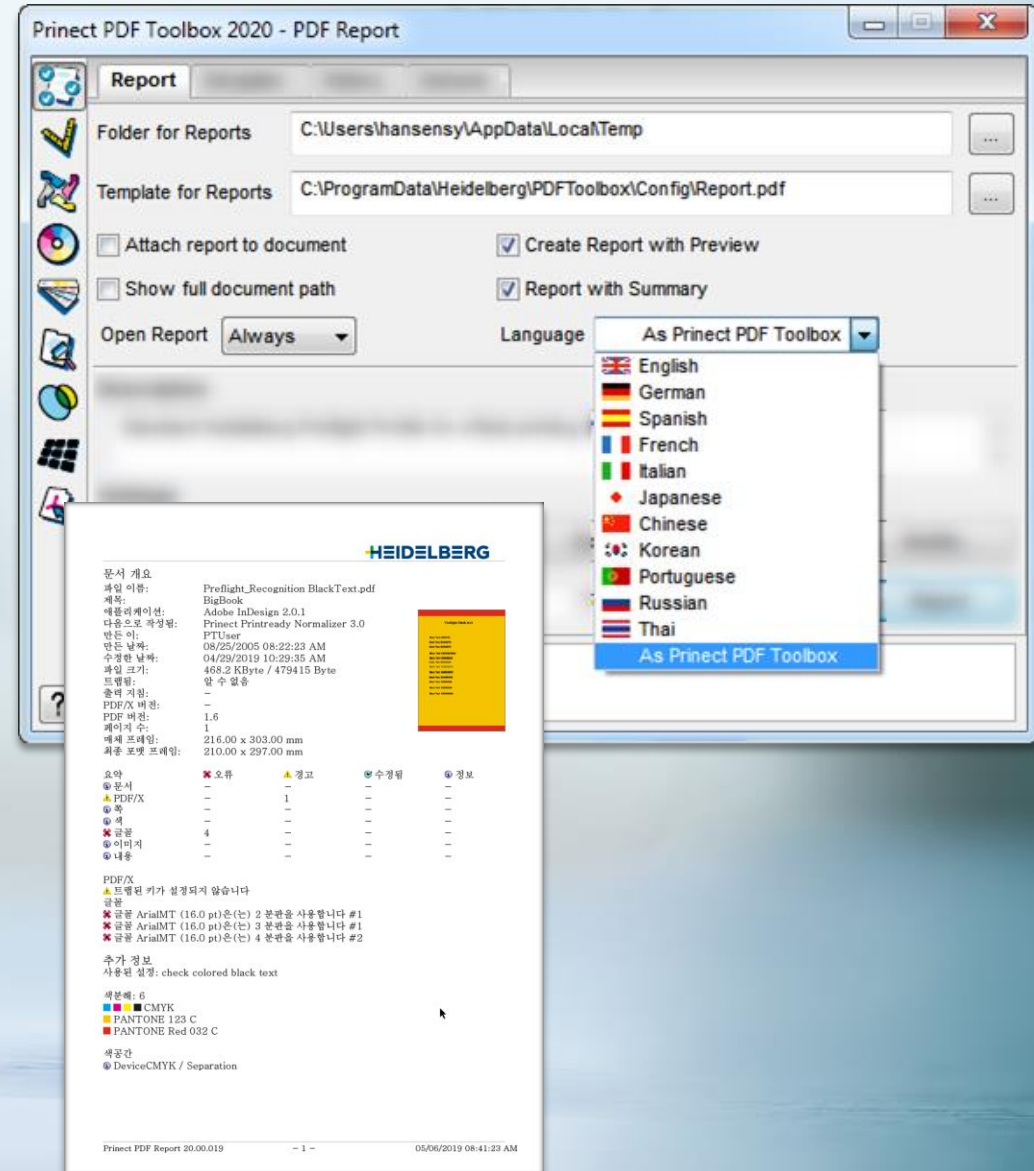
- **Supported Acrobat Versions:**
Acrobat X, XI and DC/2015/2017/2018
- **PDF Version supports PDF 2.0**
- **Context sensitive online help via**
„?“ icon or F1 (Win) / Cmd+? (Mac)
- **PDF Assistant – Preflight; Element &
Page Tagging**
- **Barcode & VDP Editor – Variable Data**
- **Versioning Assistant**
- **New Tool “Assemble Documents”**





PDF Assistant – Preflight.

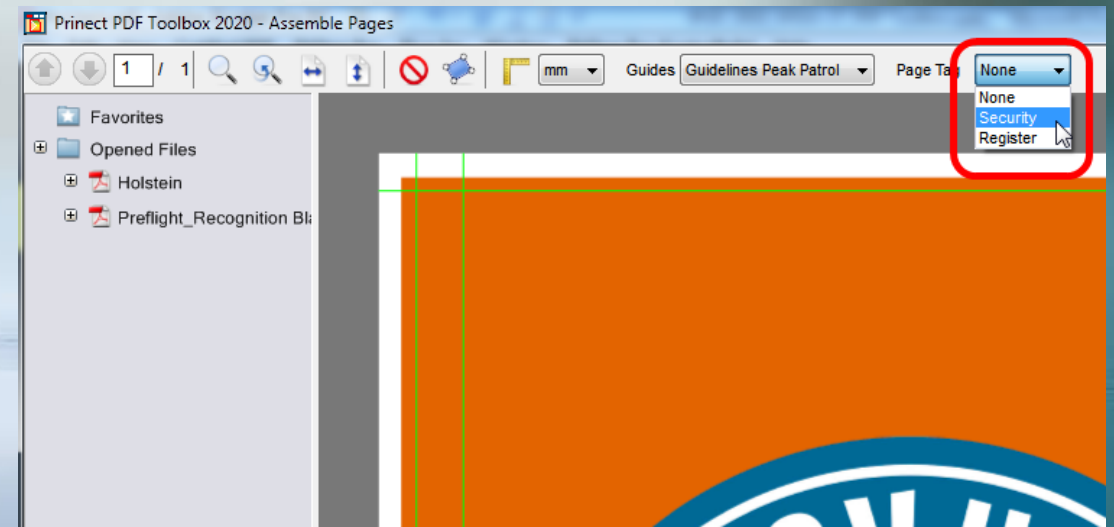
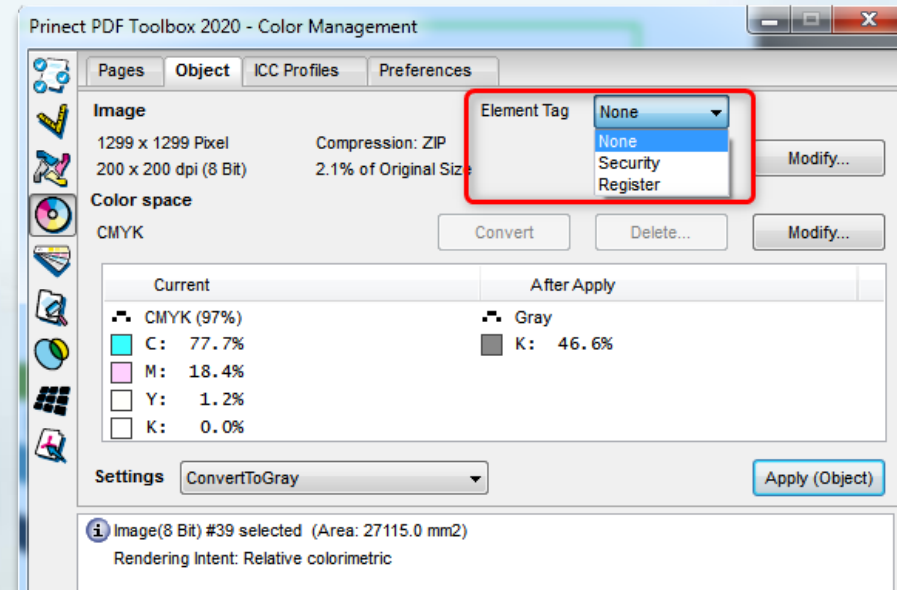
- Working globally gets easier: report Language now independent from system locale settings
- English, German, French, Spanish, Italian, Portuguese, Russian, Japanese, Chinese, Korean, or Thai
- Enhanced page size check (not equal, equal, less than, greater than)
- Enhanced text is colored with more than N separations with optional check for dot area and „is Black“
- Engine-Preflight (Qualify & Prepare)
- PDF Report with optional job data (name, id, customer, ...) and winding
- Currently in work: create cut marks (available in PDF Toolbox Geometry tool)





Labelfire/Primefire: element or page tagging for print of security labels .

- PDF Toolbox tags images for special security handling concerning color management or screening
- Either in Color Editor: Tagging images
- Or in Assemble Pages: tagging entire pages

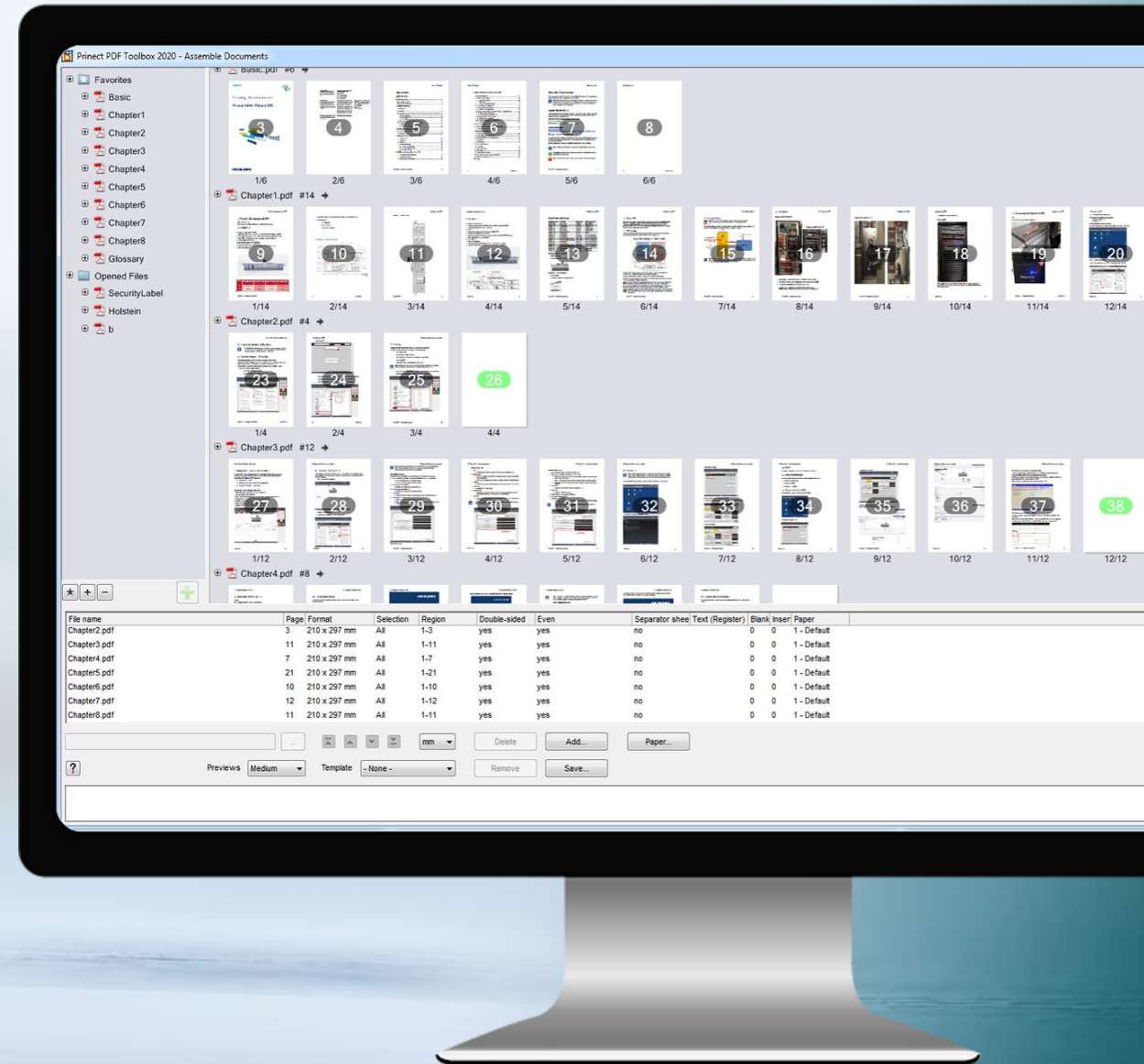




New: Assemble Documents.

New Tool for creation of structured documents like:

- Operation manuals
- Insertion of blank pages at end of a chapter
- Automatic padding to even number of pages
- Permanent preview of result document using thumbnails in selectable sizes
- Supporting templates and later editing of „Assemble Document PDF“
- Insert Sheets, Register pages and generic paper types in cooperation with Prinect Digital Print





Prinect Digital Frontend.

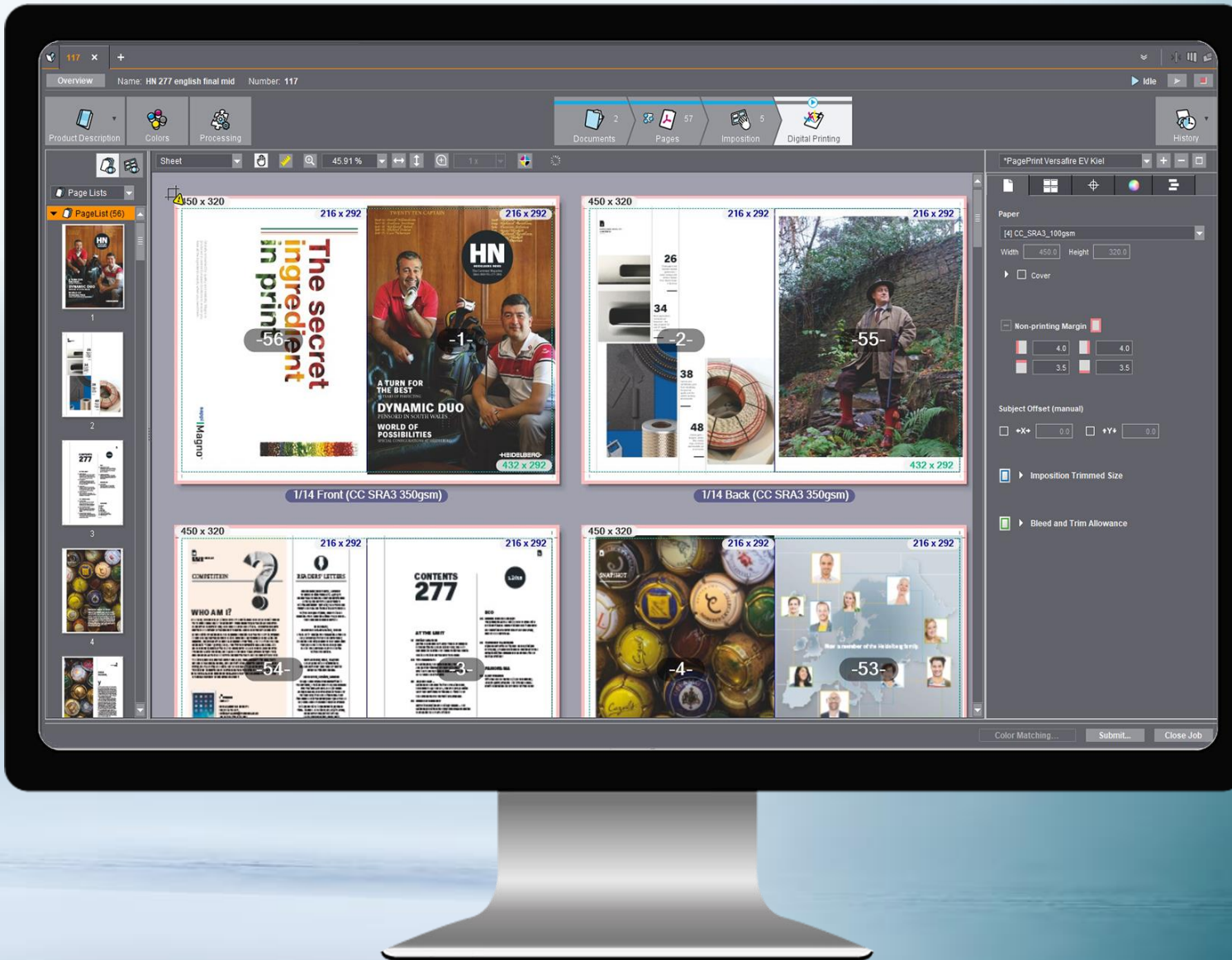
Your advantages

- Very easy to use
- Preflight, imposition, color management standard
- Stand-alone or integrated into the offset workflow



Offset and Digital in one job.

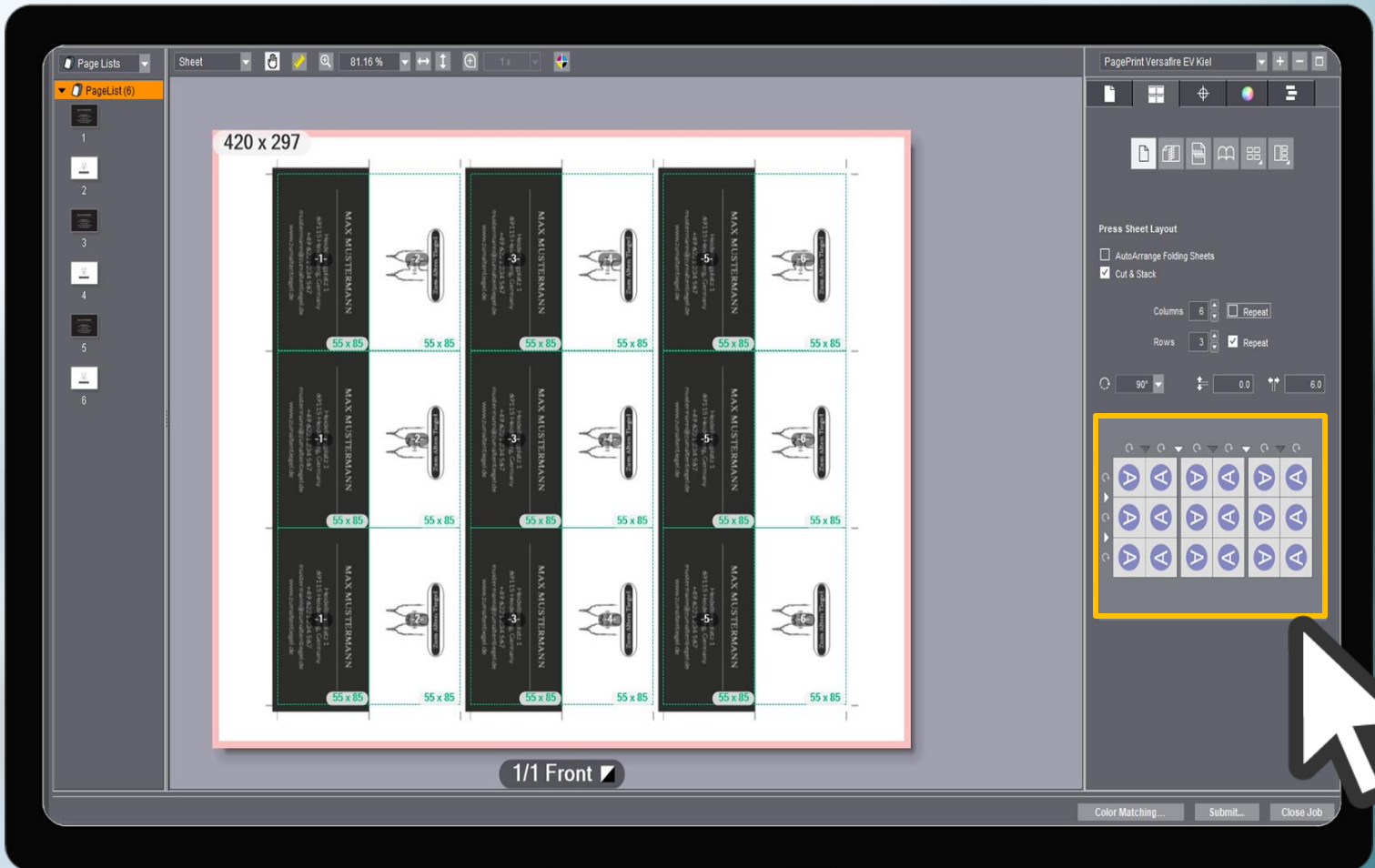
- Extreme flexibility Offset and/or Digital
- Minimum training time – one user interface
- Output security (RIP & CMM)





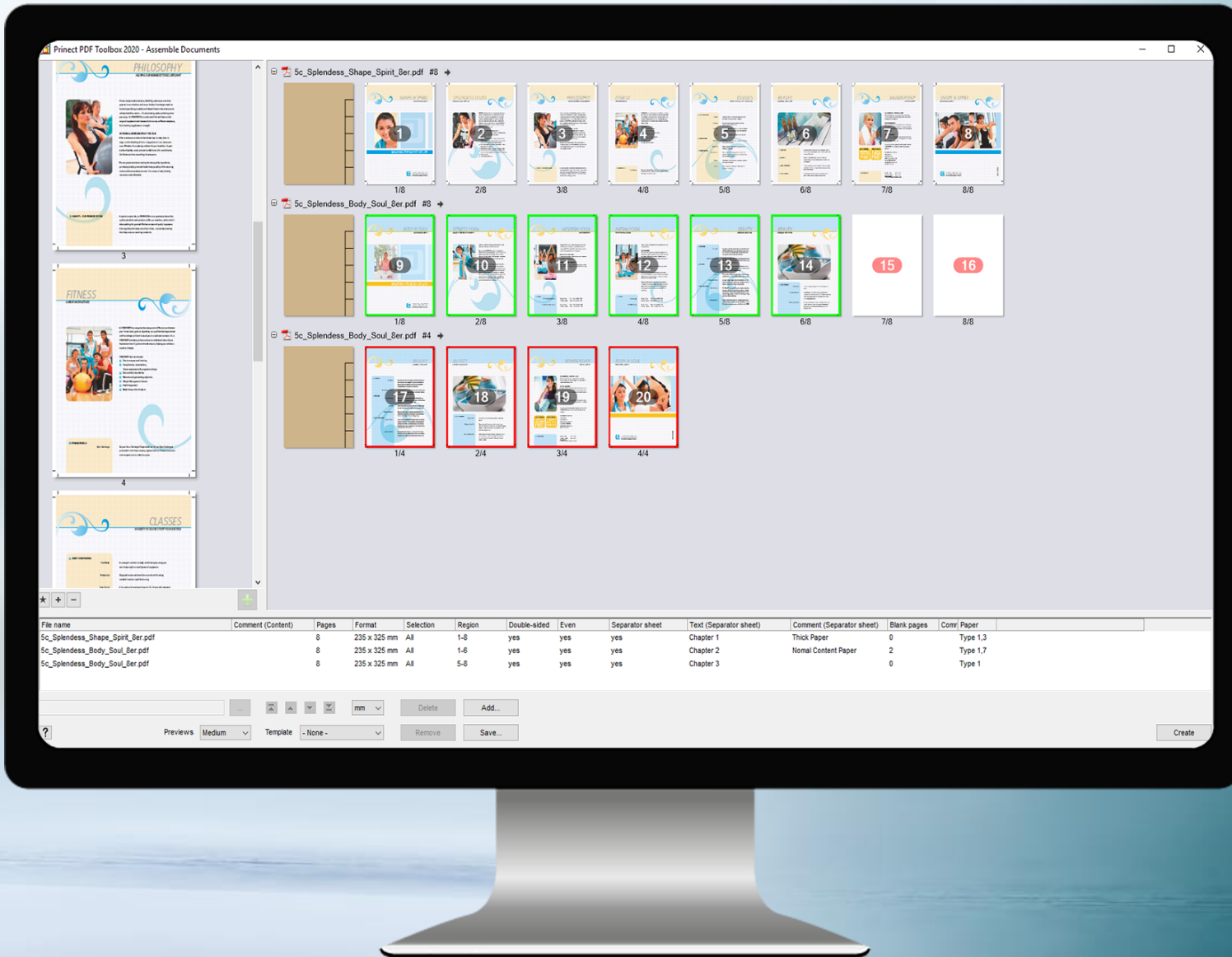
Flexible Step and Repeat Imposing.

- No special imposition software necessary
- Time savings in further processing
- Higher quality of final products



Creeping, Back-Margin,
Gripper-Fold with
brochures.

- Free rotation of the up's possible
- Distances of the up's freely adjustable



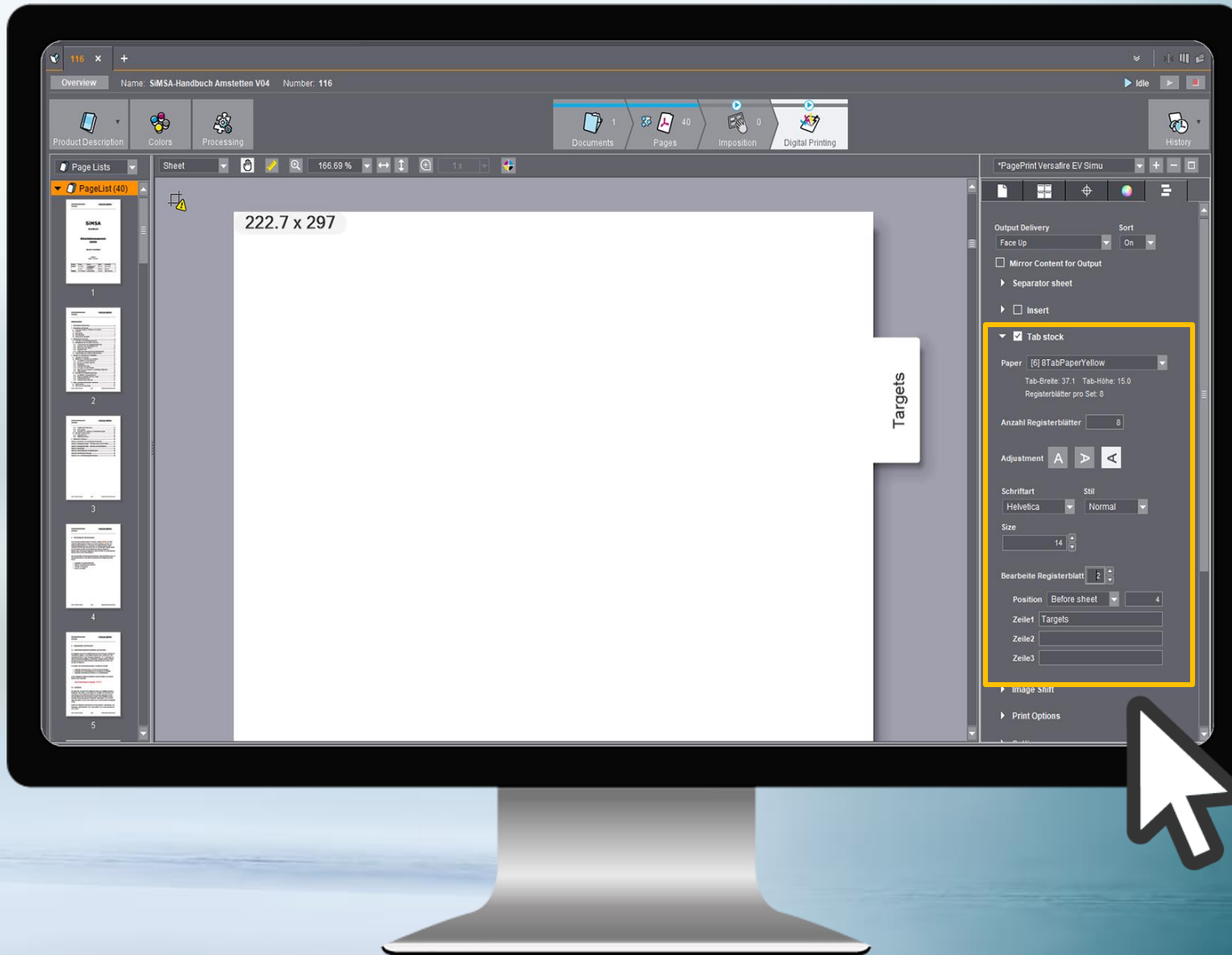
PDF-Toolbox: Assemble Document - Montage-Tool.

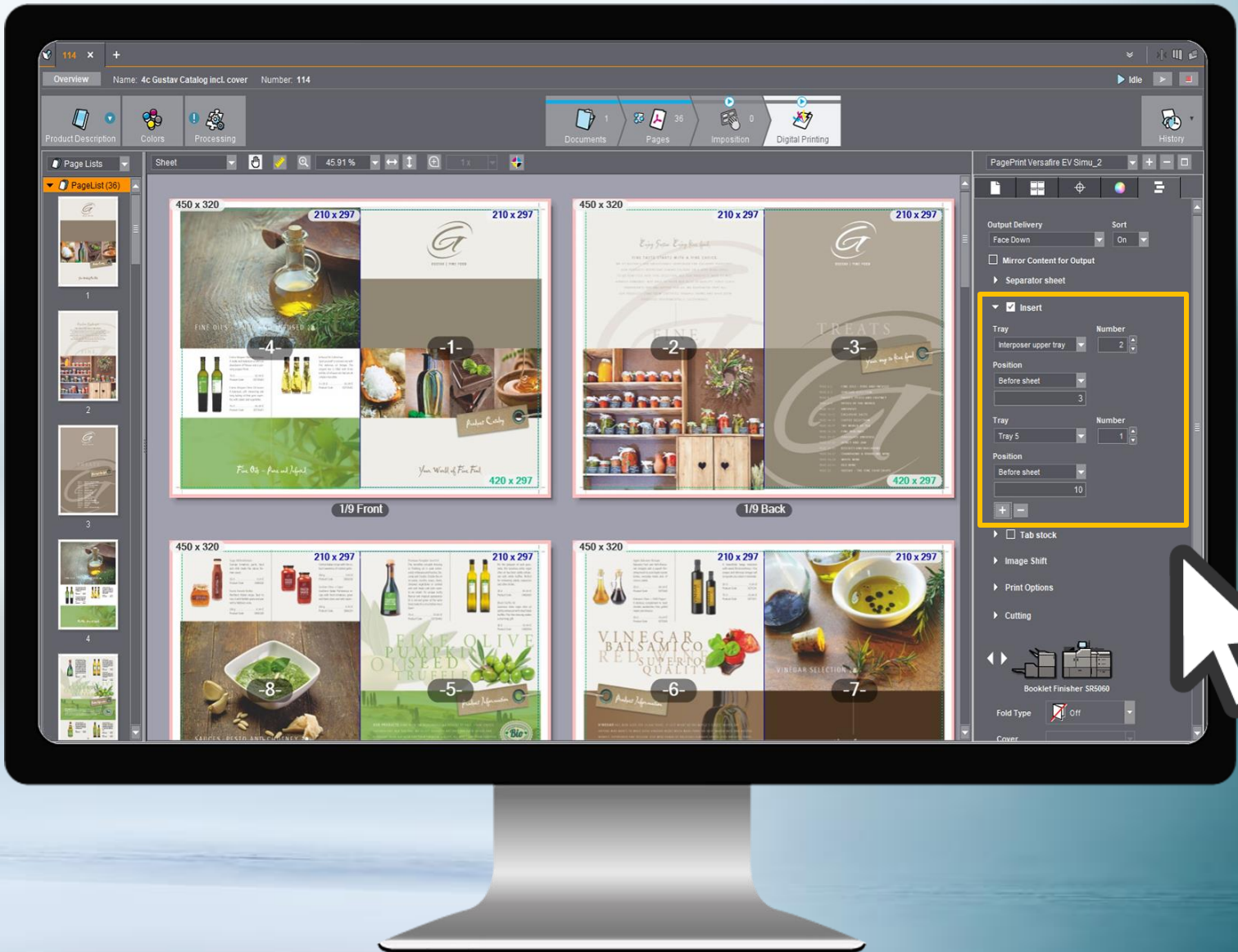
- Offline sort, arrange and def. of tab and paper
- Transfer of information to Prinect
- Automation with predefined sequences possible



Printing of Tab-Sheets.

- New Applications
- Manuals





Flexible configuration of insert sheets.

- Flexible insertion of pre-printed sheets
- Mixed media from all trays (hot & cold)
- Offset & digital combination easily possible

Easy generation of media ICC profiles.

- Greatly improved output quality
- due to media-specific ICC profiles
- No “color know how” needed!

Prinect Digital Engine Manager - VersafireEV-Kiel

Papier | Kalibrierungen | Rastersets | ICC Profil | Administration

Erzeugung eines neuen ICC Profils

Auswahl eines Papiers:

Fach	Name
Tray-1	A4_LEF
Tray-2	A4_SEF_250
Tray-3	CCCcoated-Gloss
Tray-4	CC SRA3 350gsm
Tray-A	Banner 124x33 1seitig

Prinect Digital Engine Manager - VersafireEP

Papier | Kalibrierungen | Rastersets | ICC Profil | Admini

Ausmessen der Testseite

Führen Sie die Seite 2 ein.

11:35:41 Die Messung von Seite 1
 11:30:28 Starte Messung
 11:30:28 Das Messgerät wurde erf
 11:30:25 Starte Kalibrierung des M
 11:29:52 Die Testseite ist erfolgrei

Prinect Digital Engine Manager - VersafireEP

Papier | Kalibrierungen | Rastersets | ICC Profil | Administration

ICC Profilerzeugung

Robuster Farbaufbau

Mätter Ausdruck

100%

Start

✓ Das ICC Profile wurde erfolgreich erzeugt.

Maximale Flächendeckung: 260 %
 Maximales Schwarz: 100
 GCR-Einstellung: 50
 Startpunkt Schwarz: 10
 Reduziertes GCR in Hauttönen: Ja

11:41:37 Das ICC Profile wurde erfolgreich erzeugt.
 11:41:17 Die DLL zur Erzeugung von ICC Profilen wurde erfolgreich geladen.
 11:41:17 Die Verbindung zum Messserver wurde erfolgreich getrennt.
 11:41:08 Die Messung wurde erfolgreich abgeschlossen.
 11:41:04 Die Messung von Seite 2 war erfolgreich.



Prinect Production. Further improvements.

Gang form automation:

→ with gang sheet rating

Easier Versioning checks:

→ Versioning Assistant interacts with Cockpit

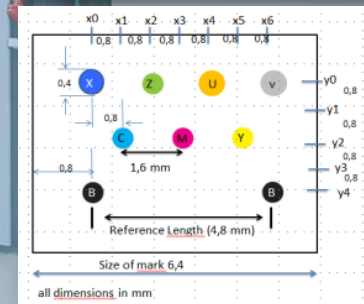
→ Plate Reuse Calculation

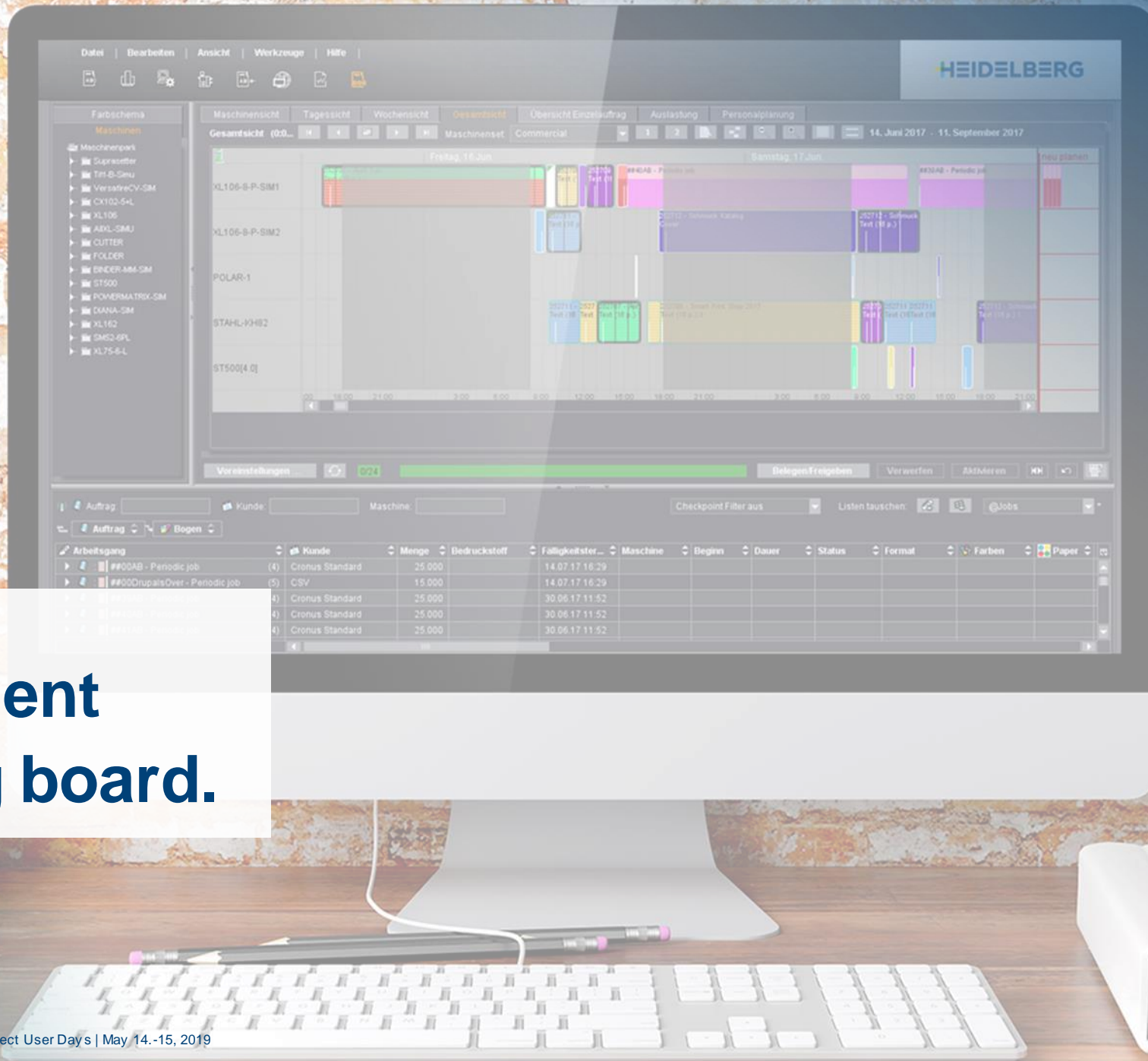




Measure Spot Colors with Prinect Automatic Paper Stretch Compensation.

- New register marks for up to 8 different (spot) colors
- Quick and easy measuring with microscope camera
- Automatic transfer to Prinect APSC software





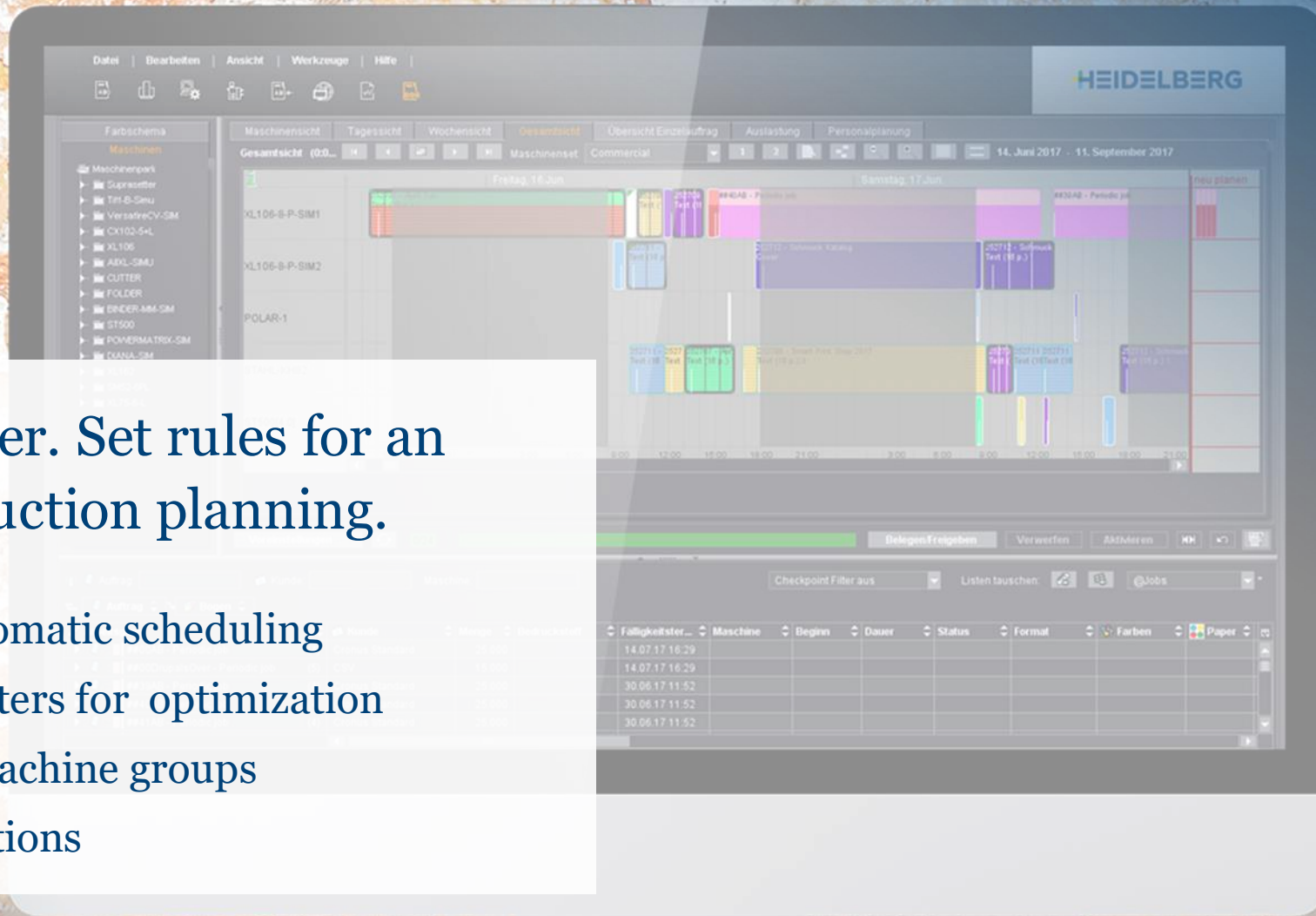
Prinect Scheduler.

The intelligent scheduling board.



Prinect Scheduler. Set rules for an optimized production planning.

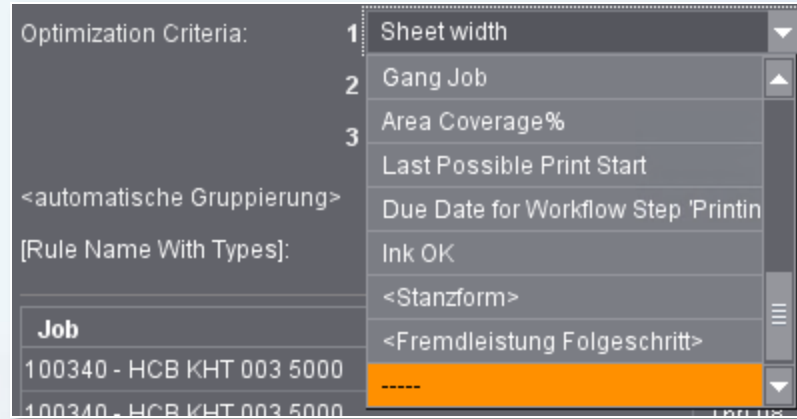
- First step into automatic scheduling
- Enhanced parameters for optimization
- Optimization of machine groups
- New comfort functions



Set rules for an optimized planning sequence.

- Already available parameters have been enhanced:
- Checkpoint “spot color”
- Die cut tool
- Outside work
- Optimization of machine groups
- Automatic group creation on a defined level and configuration of Front/Back order

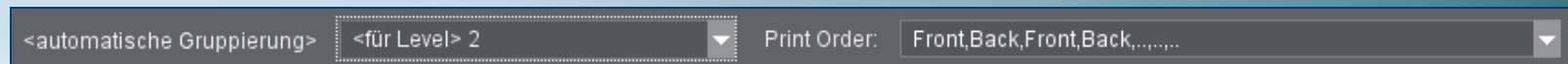
Step 1



Step 2

XL 105 12 (Perfecto)				10-0081 - Beaut Sheet 11	10-0081 - Beaut Sheet 15	10-0081 - Beaut Sheet 16	10-0081 - Beaut Sheet 17	10-0081 - Beaut Sheet 5	10-0081 - Beaut Sheet 6	10-0081 - Beaut Sheet 18	10-0081 - Beaut Sheet 7	10-0081 - Beaut Sheet 8	10-0081 - Beaut Sheet 10	10-0081 - Beaut Sheet 9
XL B 105 12 (Perfecto)				10-0081 - Beaut Sheet 12	10-0081 - Beaut Sheet 13	10-0081 - Beaut Sheet 14								
XL C 105 12 (Perfecto)				10-0081 - Beaut Sheet 19	10-0081 - Beaut Sheet 20	10-0081 - Beaut Sheet 21	10-0081 - Beaut Sheet 27	10-0081 - Beaut Sheet 28	10-0081 - Beaut Sheet 29	10-0081 - Beaut Sheet 22	10-0081 - Beaut Sheet 23	10-0081 - Beaut Sheet 24	10-0081 - Beaut Sheet 25	10-0081 - Beaut Sheet 26

Step 3

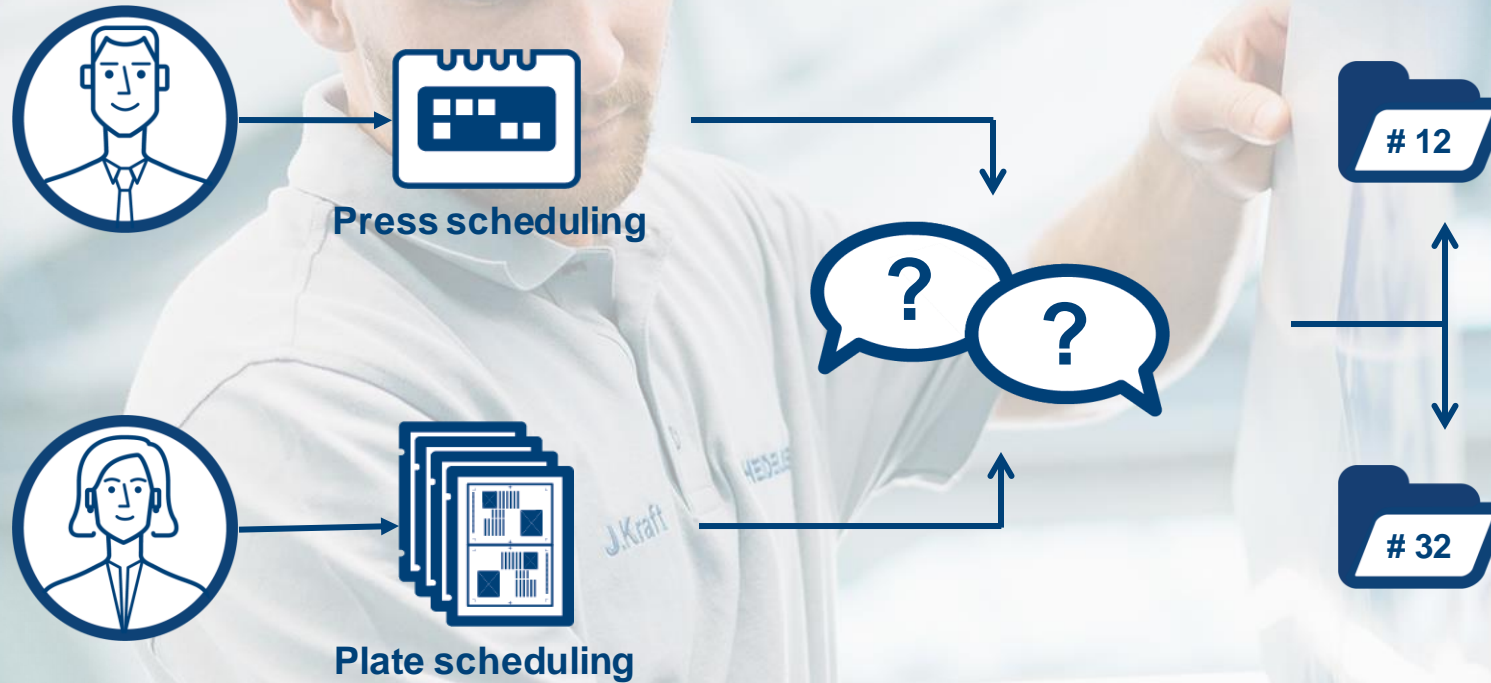




Prinect Plate Pilot.

Optimized plate production for the press room – Push to Stop for plate production.

Daily ...





Prinect Plate Pilot Improvements 2020.

- Activation
- View-Only-Mode
- Use selected platesetters only
- Configuration of external platesetters
- Bypass the Plate Pilot

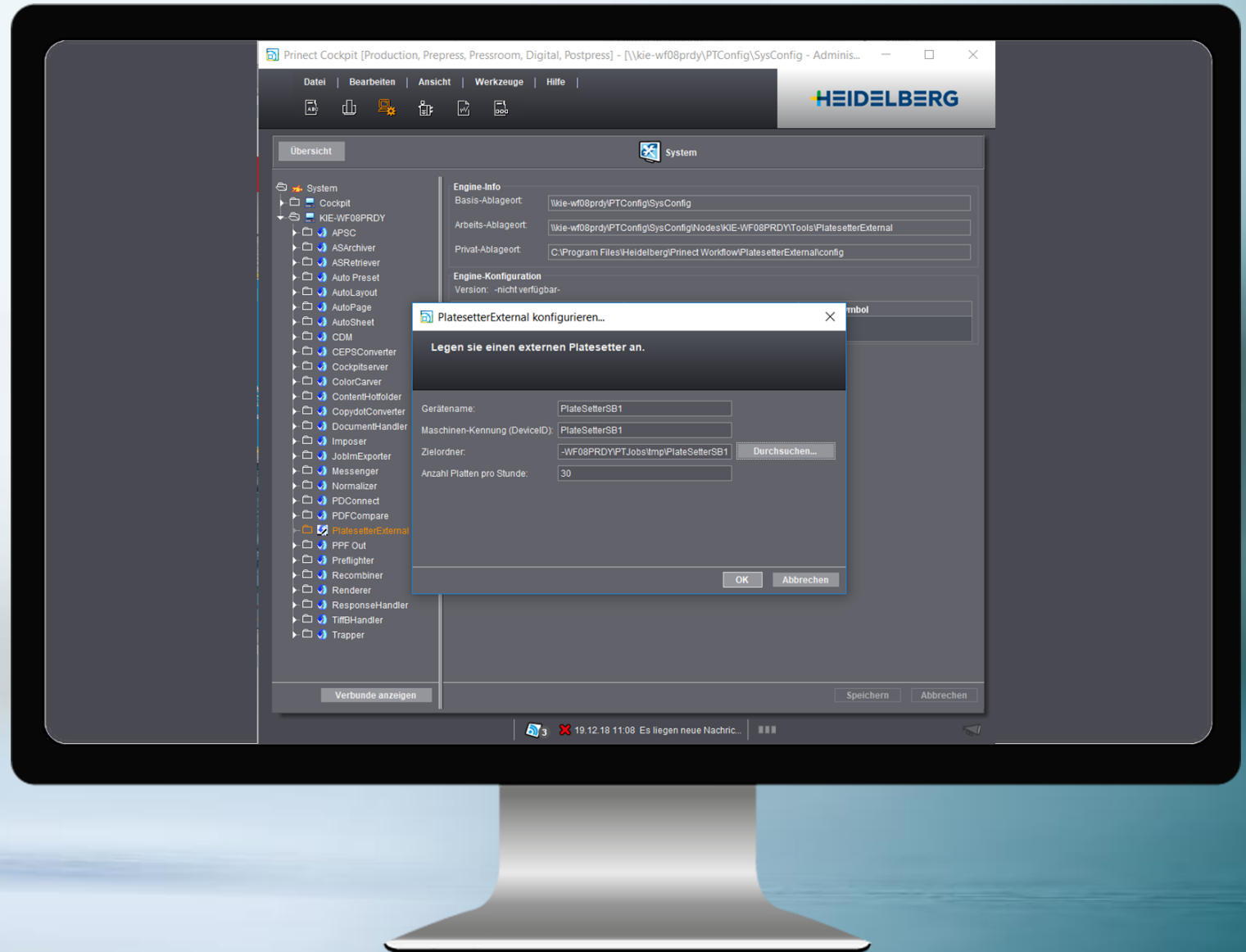




Plate Pilot.

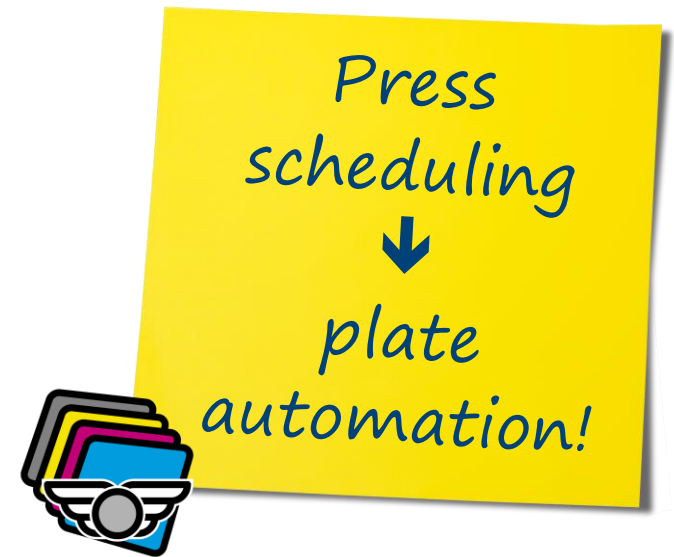
- Pauses prepress workflow after Tiff-Bs are rendered
- Automatic rule-based or manual creation of plate stacks according to printing start
- Batch-submission of plate sets to platesetter -> correct order of plates on trolley at the press
- Can be used for any platesetter (Suprasetter, Shooter, or 3rd party via external platesetter)
- Integrates with scheduler (or connected MIS)
- Signals status of plate setter with external lamp

Automatic Plate Stack Creation

- Rule-based creation of plate stacks (printing start time, TIFFB-Availability)
- Considers stack size, recording and transportation time
- Relies on scheduled print work steps for correctly sorted plate stacks

Automatic Plate Stack Recording

- Rule-based forwarding of plate stacks to free platesetter
- Most urgent plate stack is forwarded
- Somebody/something must take care of trolley change



Organizes plate output according to press schedule.



Push to Stop. Improved support for press operators.

More than presetting the ink keys

- Definition of work packages or groups
- Work instructions for press operators
- Automatic transfer of operations into the queue „Autofill

New Wallscreen XL job list.

→ Enhanced job list parameters
for selection:

→ Queue status

→ Pull lay

→ Paper

→ Name

→ Dimensions

→ Grammage

→ Grain direction

→ Inking (4/4)

→ Color sequence

→ Planned device

→ Change date

→ *Group number (as of
Press Center S19A)*

→ *Instructions (as of
Press Center S19A)*

Start	Number	Name	Operation	Group number	Instructions
25.04.2019 10:31	253444	Workshop dairy	ST107447 4/4		
25.04.2019 11:05	253445	Wine catalogue	ST107451 4/4		
25.04.2019 11:39	253441	Whats new	ST107436 4/4	3JV	S100
25.04.2019 12:20	253441	Whats new	ST107437 4/4	3JV	S100
25.04.2019 12:52	253441	Whats new	ST107438 4/4	3JV	S100
25.04.2019 13:24	253442	Happy holidays	ST107440 4/4	3JW	S50
25.04.2019 14:05	253442	Happy holidays	ST107441 4/4	3JW	S50
25.04.2019 14:37	253442	Happy holidays	ST107442 4/4	3JW	S50
25.04.2019 15:09	253443	Ferry goes to holiday	ST107444 4/4	3JX	KB S50
25.04.2019 15:49	253443	Ferry goes to holiday	ST107445 4/4	3JX	KB S50
25.04.2019 16:20	253443	Ferry goes to holiday	ST107446 4/4	3JX	KB S50
25.04.2019 16:51	253444	Workshop dairy	ST107448 4/4	3JY	
25.04.2019 17:32	253444	Workshop dairy	ST107449 4/4	3JY	

→ Full Prinect integration delivers...

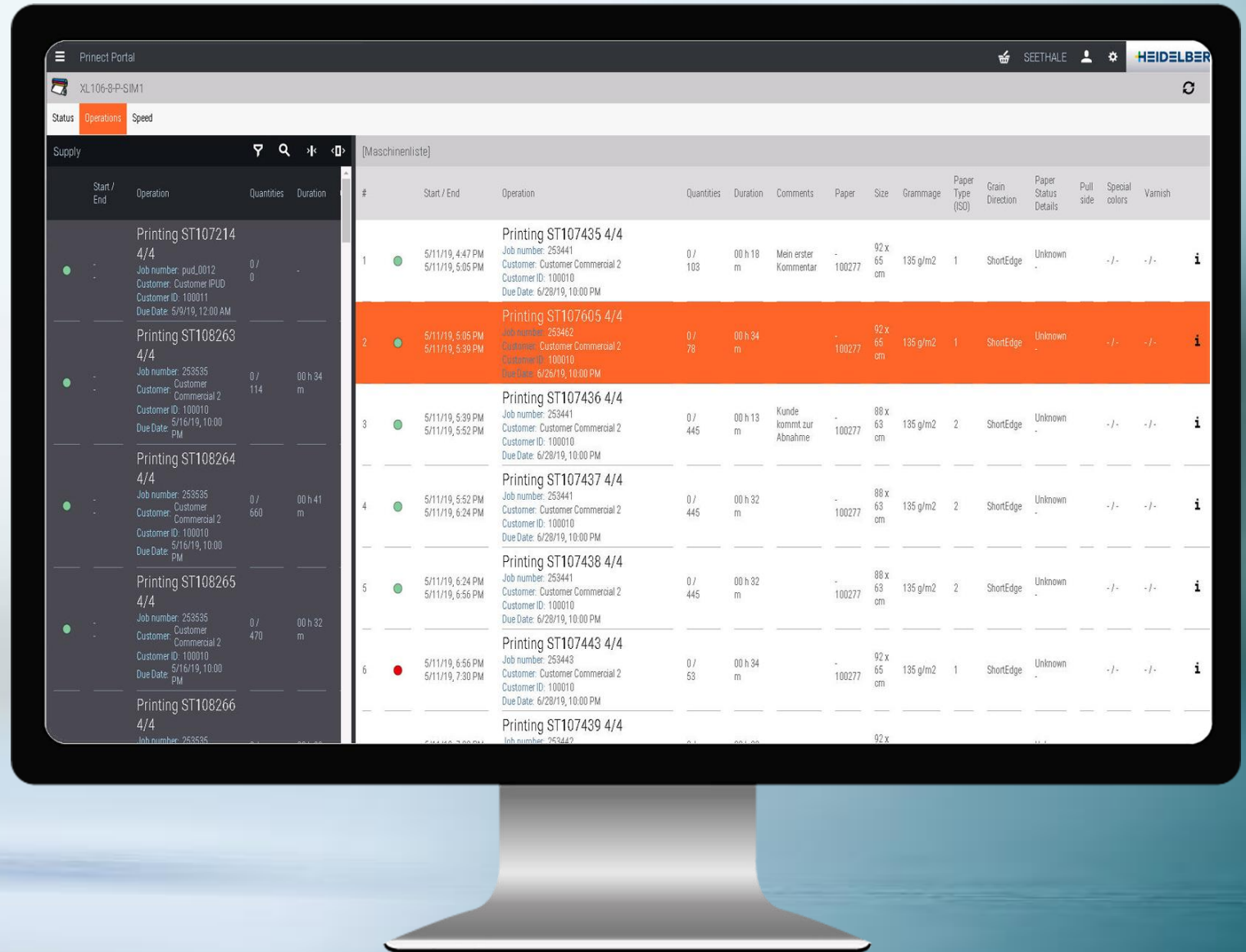
.... all these parameters!

.... best support for the press operator!



Prinect Portal – new simple job sequencing.

- Definition of job processing order
- Display of valuable workflow data, e.g. paper, color, comments
- Drag & Drop operation for sequence planning of print jobs





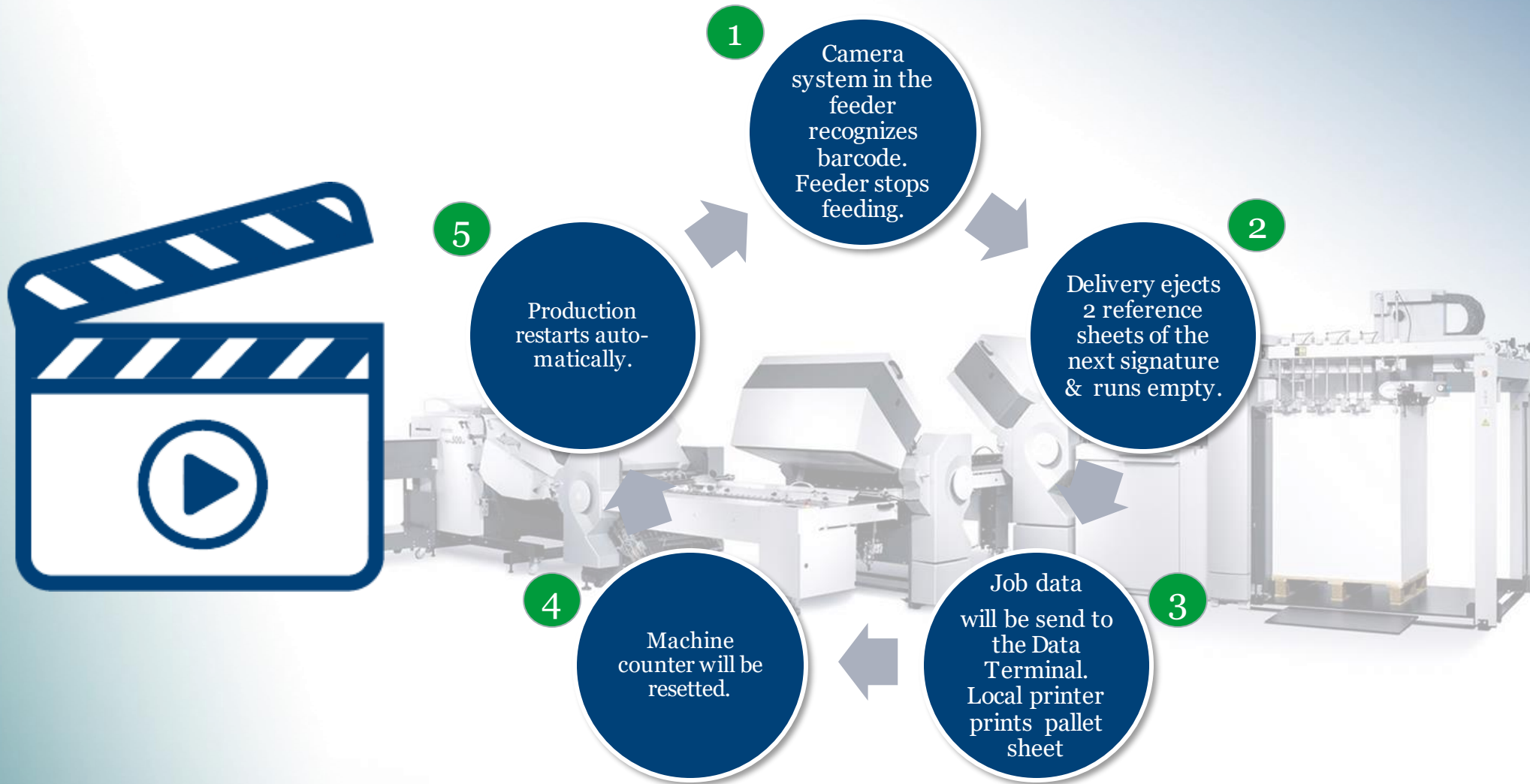
Push to Stop.

Autonomous signature production.





Autonomous signature production at Stahlfolder with PFX feeder.





Prinect Production.

Packaging & Label.



Improvements for Packaging and Label.

3D simulation of pillow packs

→ Available in Prinect Package Designer and Signa Station Packaging Pro

New Icon for Packaging Pro / Label Pro

→ Differs from Prinect Signa Station base icon

→ Much easier to select the right application

Automatic repeat of scheduled tasks

→ Scheduled ganging with automatic repeat of the task until gang pool is empty based on enhanced threshold criteria

→ The next step for more sophisticated workflow automation for label, packaging and commercial

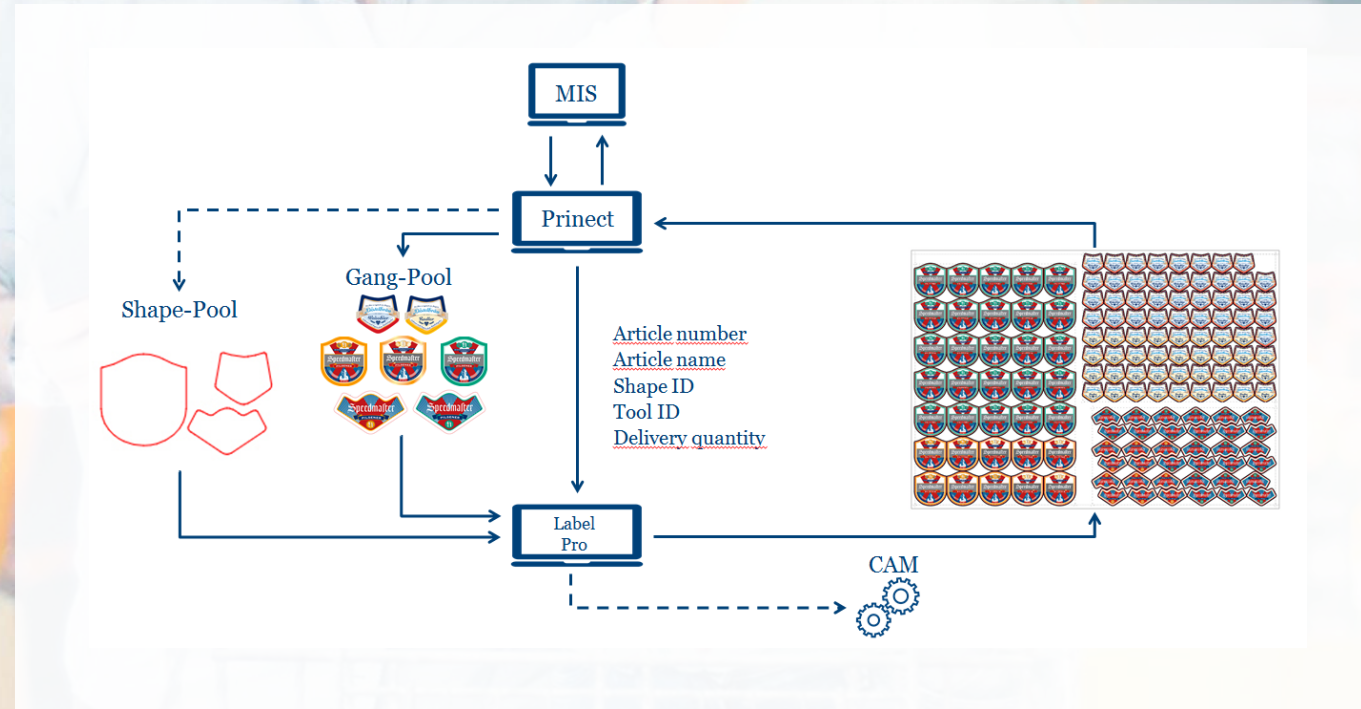


Label production with CERM and Prinect Signa Station Label Pro.

Gang form automation

Automated request for ganged nested layouts from CERM to Signa Station Label Pro (Server) for estimation.

Cerm sends a request for ganged nested layout during estimation process. Based on shapes, articles and delivery quantity a nested layout is generated by Signa Station Label Pro. This will work faceless without operator interaction.





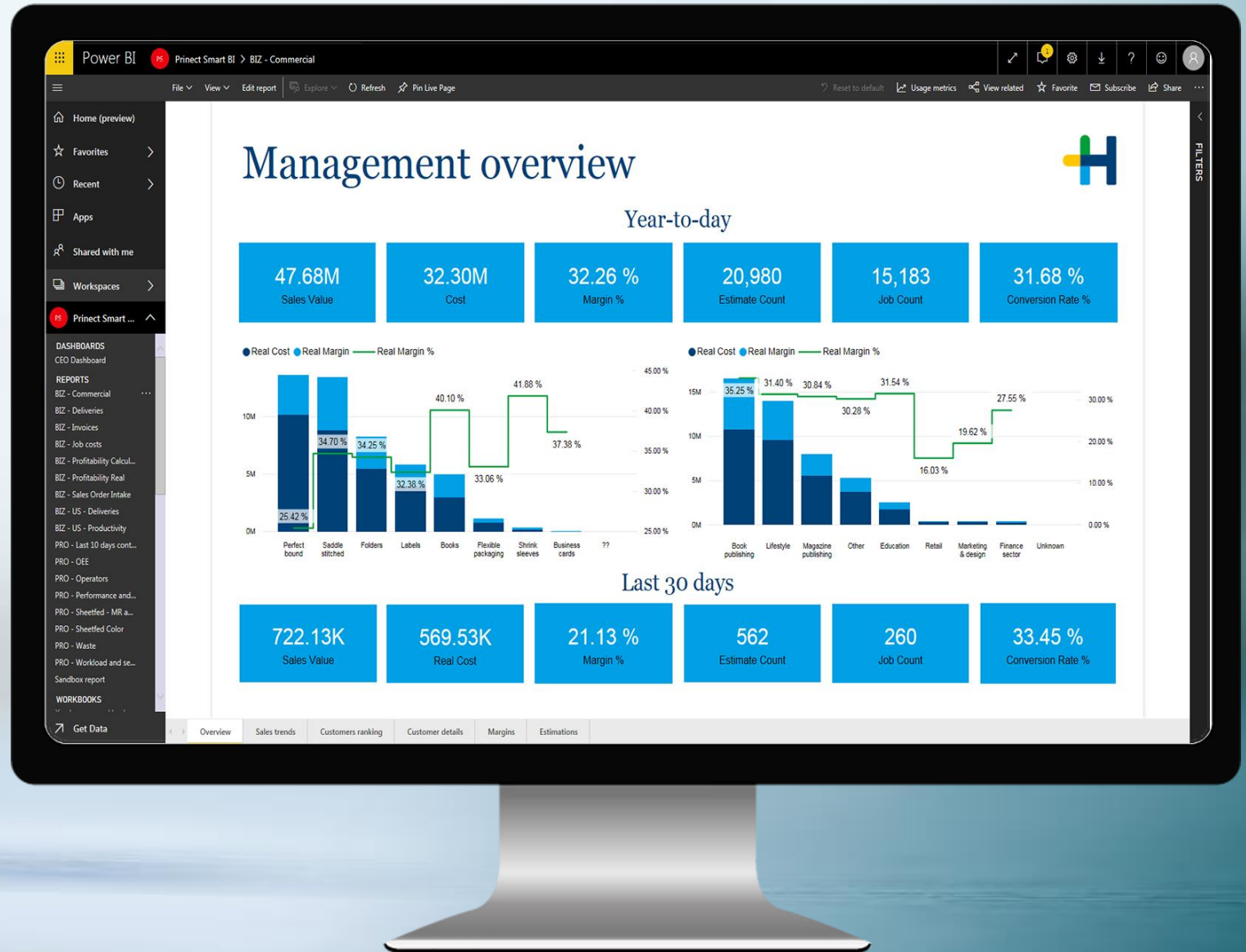
Prinect Smart BI.
Unlock your hidden potential.





Princt Smart BI will give you insights into your entire business.

→ End-to-End, from RFQ to Invoice





Just one click to more transparency.

→ We deliver standard reports you can start using immediately



The image shows a hand holding a tablet displaying a data dashboard. The dashboard is divided into several sections:

- Visualizations:** A grid of icons for various chart types (bar, line, pie, etc.).
- Fields:** A list of data fields with checkboxes. A red arrow points from the 'Net running speed B (1/h)' field in this list to the legend of the main chart.
- Filters:** Sections for 'Page level filters', 'Drillthrough filters', and 'Report level filters'. The 'Report level filters' section includes 'Device' (is XL106-8P) and 'Date' (4/24/2017 - 4/23/2018).
- Main Chart Area:** Titled 'Productivity (Details)', it contains three charts: 'Net running speed A (1/h) by Year Month', 'Net running speed B (1/h) by Year Month', and 'Idle time (h) and Operating time (h) by Year Month'. A legend at the bottom of the chart area shows 'Net running speed B (1/h)' with a red arrow pointing to it from the Fields list.

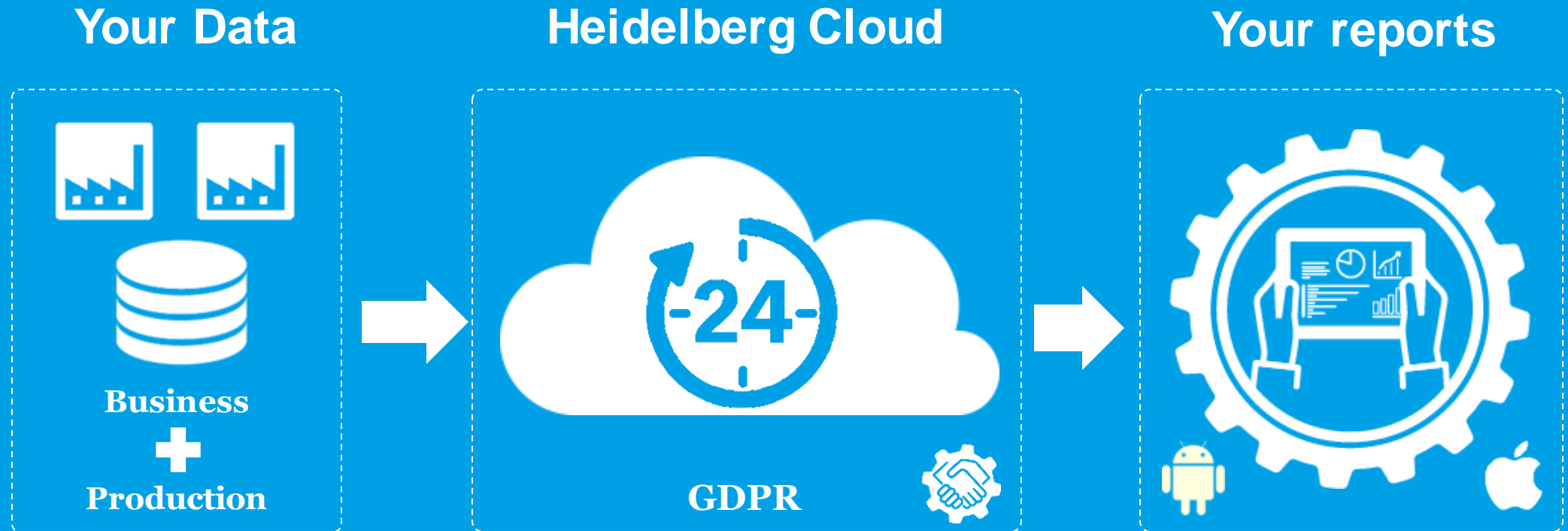
Build your own reports with Drag 'n Drop of data fields.

Prinect Smart BI.

Say hello to your
personalized dashboards.



We made it easy!



1. You sign up to Smart BI service

2. We configure the connection

3. You get access to your reports



The customer value



Fast Analytics

Your data is connected so you can visualize your data in minutes.

This makes Prinect Smart BI faster to use.



Ease of Use

Anyone can analyze data with intuitive drag & drop products.

No programming, just facts.



Big Data, Any Data

From business to production, explore any data in any form with a large number of visual elements.

This makes Prinect Smart BI the only BI you need.



Smart Dashboards

Combine multiple views of data to get richer insight.

Makes overview of a large amount of information easy with Prinect Smart BI.



Always up to date

Get the freshest data with a daily connection to your data.

This means that Prinect Smart BI is always up to date, with our latest data.



Share in Seconds

Publish a dashboard with a few clicks to share it live on the web and on mobile devices.

Access to your data anytime and anywhere with Prinect Smart BI.



Prinect @Heidelberg Assistant. Functions.





Workflow solutions for Business and Production.
Prinect. Driving the Smart Print Shop.



Thank you very much for your attention.
We are happy to answer your questions.