

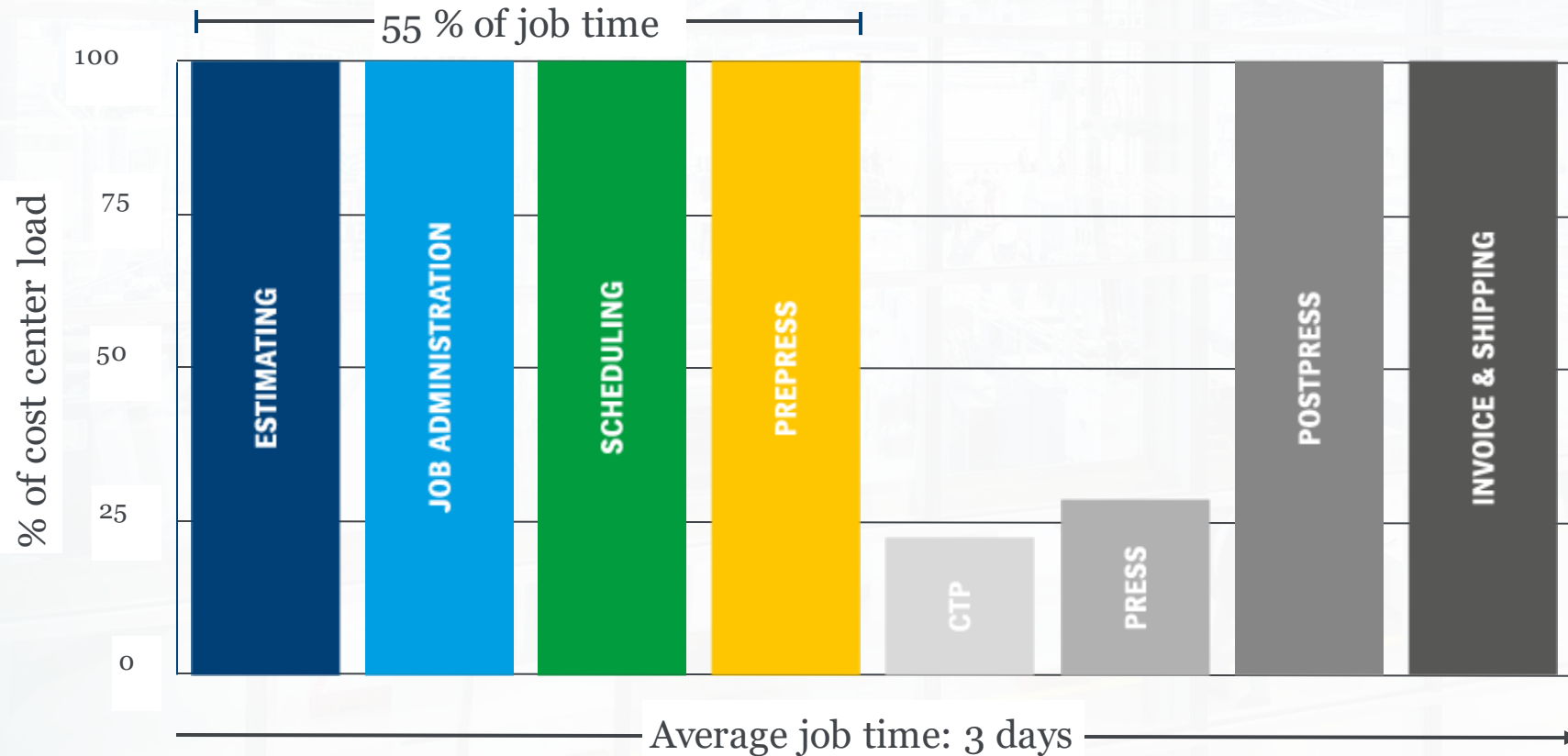
**Moving from feature to successful usage:
Prinect Certified Application Engineer
Klaus Schelble**





The daily challenge: job preparation and prepress

Is busy while press & CtP is idle.

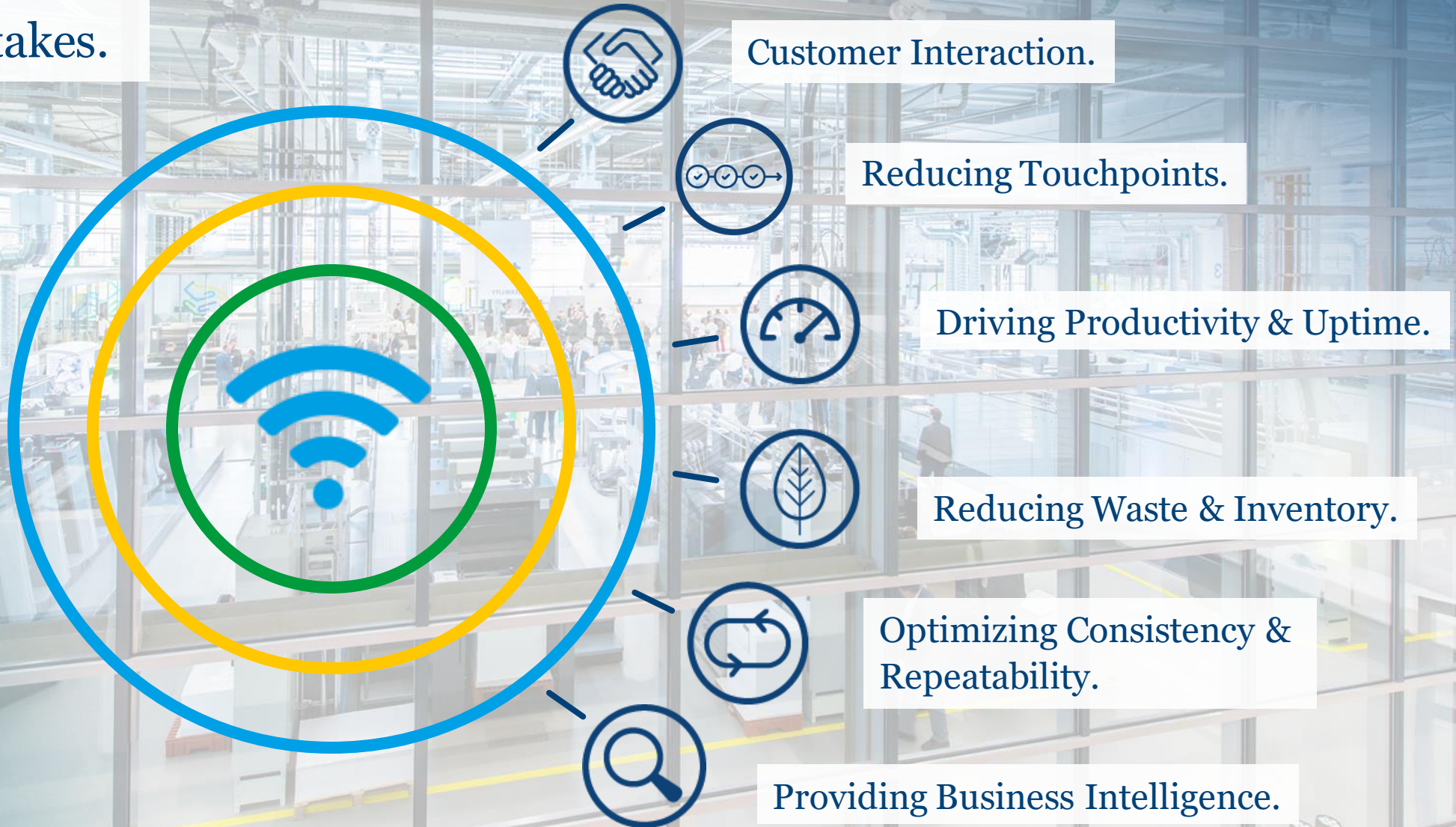




The solution.
**Sustainable productivity increase
through Production Manager and
the right training program.**



Lower costs per product
with fewer mistakes.





Lower costs per product
with fewer mistakes.





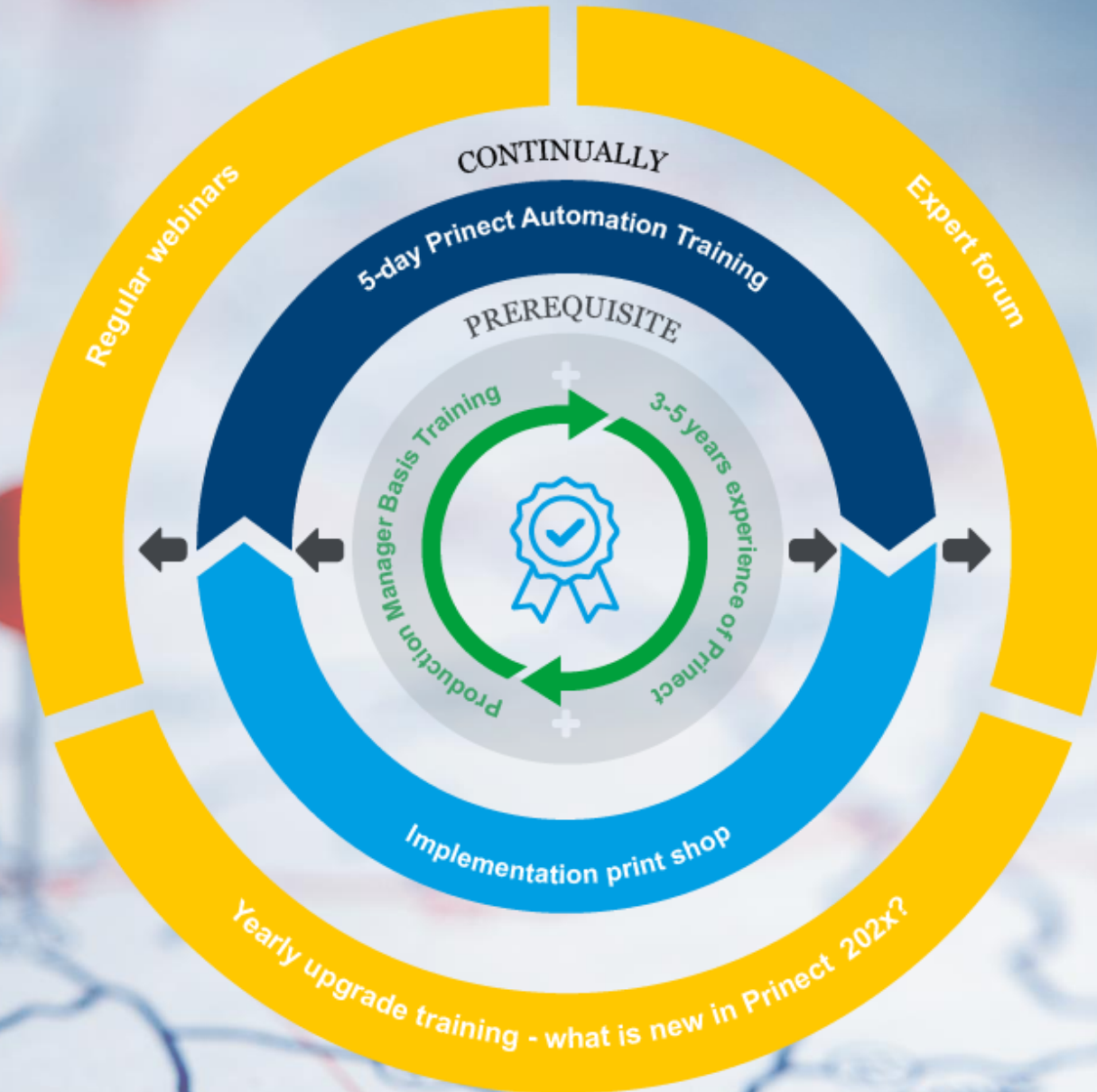
New skill development program: Prinect Certified Application Engineer.

- Prinect Production Manager provides the possibility to use the full functionality scope of Prinect Production.
- Current Prinect training landscape (operator training, startup assistance, process consulting, etc.) can be improved to sustainably increase the productivity levels of print shops.
- However, just knowing and understanding the Prinect function is not enough: challenge is transferring/adapting and implementing the know how into the individual print shop world.
- The new Heidelberg concept is sustainable through continuous education.





Education process.
**Prinect Certified
Application
Engineer.**





First module is available: Prinect Advanced Automation Training.

- **Target:** Participant is able to implement the possibilities of automation in customer interaction & prepress. Current Prinect training landscape (operator training, startup assistance, process consulting, etc.) can be improved to sustainably increase the productivity levels of print shops.
- **Content:** Focus on the automated job take-over from MIS or Web Portal: Prinect Portal, Prinect WebShop, W2P Manager, 3rd party Web Shop & automation in prepress.

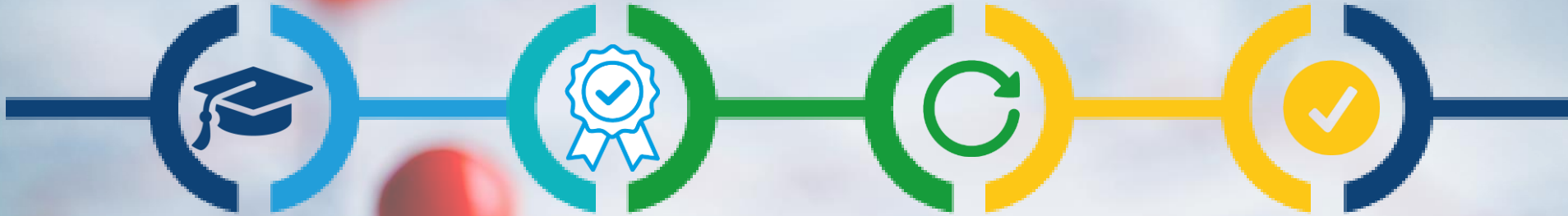
Prerequisite:

- Participant knows the Prinect Production Manager (Signastation, Prepress Workflow, Integration of the press room).
- Participant has at least 3-5 years experience in the successful application of the Prinect software.
- Knowledge/experiences in MIS and customer interaction via Prinect Portal or Web Shop is welcomed.



How does the skill

development program work?



Initial training:

- Prerequisite: Training Prinect Production Basis + 3-5 years of experience
- Successful participation in Prinect Automation Training
- Successful implementation of Prinect Automation in-house

**Prinect
Certified Application
Engineer
(valid for 3 years).**

Continuous training:

- Annual training "What is new in Prinect 202x"?
- Regular webinars for sharing experiences and best practices on specific topics
- Forum only for Prinect Certified Application Engineers (from expert to expert)

**Renewal of
the Certificate**



Increased productivity with the right software solution & training program: Prinect Certified Application Engineer.

- ✓ Better customer intergration.
- ✓ Reduced touchpoints.
- ✓ Increased productivity and operating time.
- ✓ Reduced errors.



Next steps: additional modules are already planned.

- Scheduling.
- Prinect Administration.
- Further information (training concept) in the session right after the break.
- Sneak preview in workshop tomorrow.



Workflow solutions for Business and Production.
Prinect. Driving the Smart Print Shop.



Thank you very much for your attention.
We are happy to answer your questions.