

INTERNATIONAL
PRINECT USER DAYS

6. International Princt User Days, November 18th and 19th, 2015

Princt Signa Station
Princt 2016

Sabine Roob; Susanne Eberhard

HEIDELBERG





Workshop 24/31

Prinect Signa Station

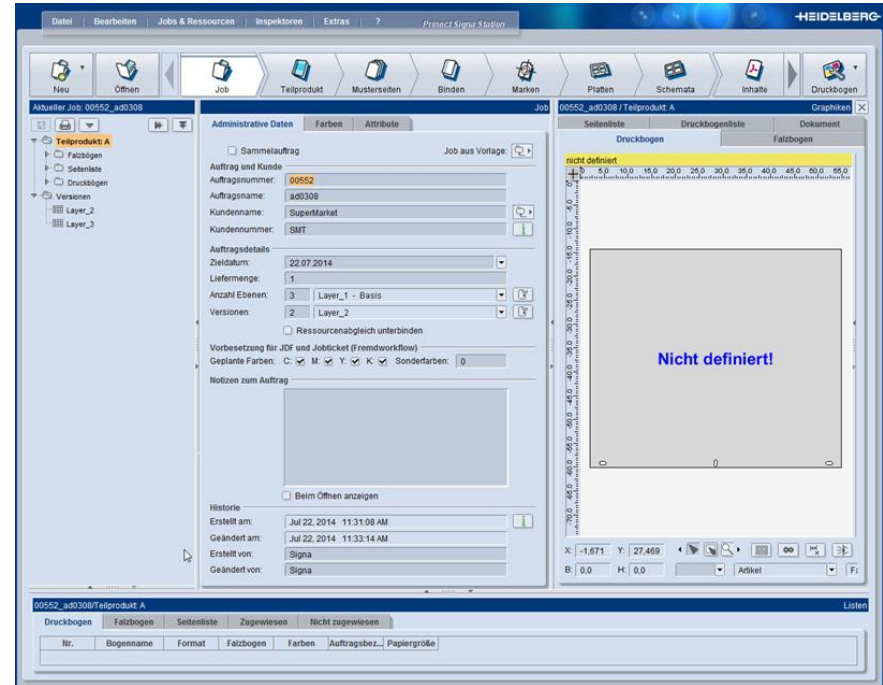
1. Task oriented user interface like in Cockpit
2. Optimizations for gang jobs
3. New marks and control elements
4. Q&A, Tips & Tricks



New features in Prinect Signa Station 2016

New User Interface

- Task oriented toolbar
 - All processes of one job at a glance
 - The handling in the different windows has not been changed
 - Individual adaptation of UI is possible

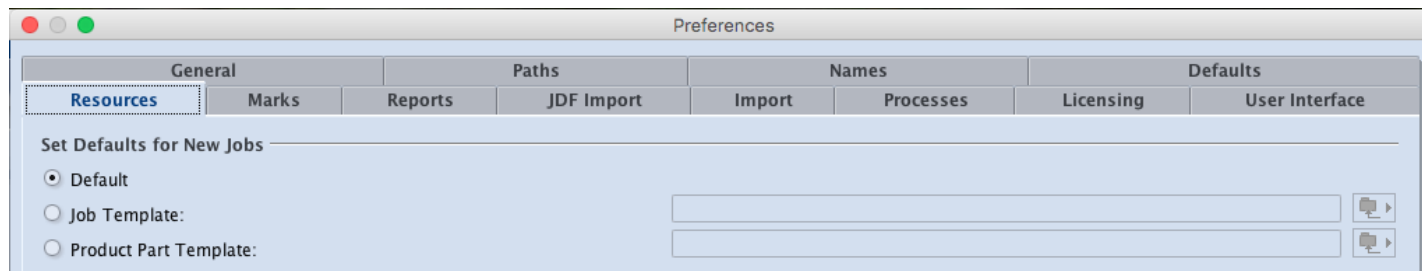




New features in Prinect Signa Station 2016

Ease-of-use

- Fast selection of resources
- Job templates as preset for new jobs



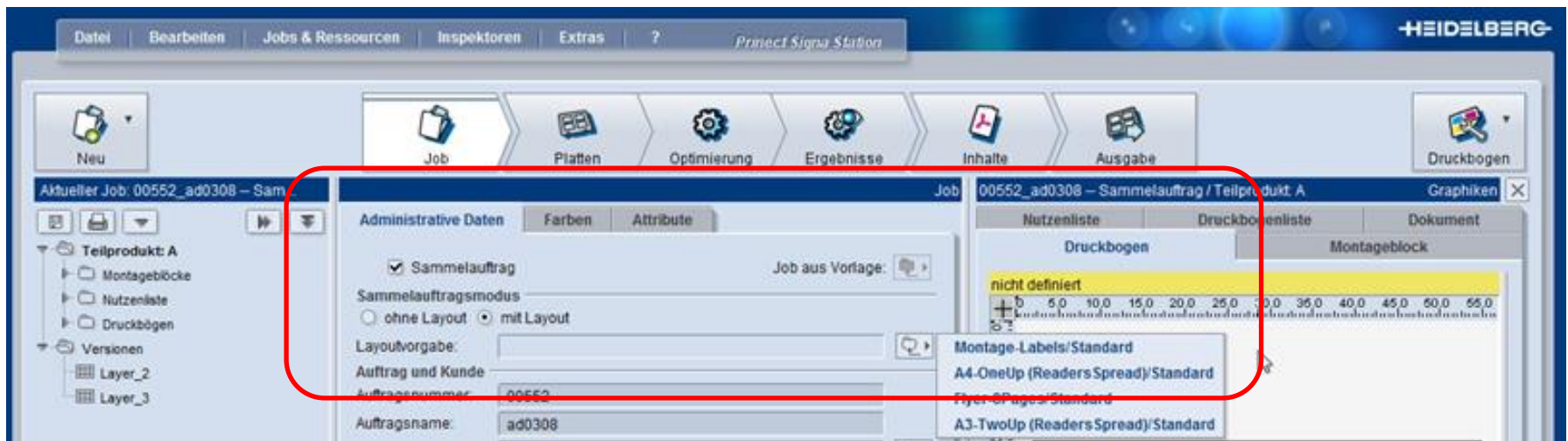
- Higher speed for PDF Report creation
- Adaptation of folding sheet amount to amount of pages



New features in Prinect Signa Station 2016

Ease-of-use for Ganging (1)

→ Easier selection “Ganging with Layout”





New features in Prinect Signa Station 2016

Ease-of-use for Ganging (2)

- Permanent display of gang pool
- Automatic update and display of list view
- Optimization with several different plate templates

Job Import for Gang Job

Folder for Gang Jobs: \\helvm71600\PT\Jobs\GangPool

List Box of Customer Jobs

Printing Material: [dropdown]

Job	Target Date	Delivery Quantity	Grammage	Colors Front	Colors Back	Article	Cl
Blinderdruck glänzend WS 170 g/... (0 9)							
BVS Glossy (0 2)							
BVS_Glossy (0 15)							
coated (0 3)							
SE20101504-Flyer_Hochwalden	2015-12-15 11:06	4000	135.00	CMYK	CMYK		F
SE20101503-Cocktail_38P	2015-12-14 10:10	3000	180.00	CMYK	CMYK		F
SE16111501-Letter_A4	2015-12-21 10:37	8000	135.00	CMYK, PANTONE 388 U	CMYK, PANTONE 388 U		IF
Dull coated WS 170 g/m² 10... (0 7)							
ExclusivWhite 300 (0 14)							
gloss coated (0 8)							
Glossy (0 2)							
251609-Upload Gustav Brochure	2015-11-16 12:20	500	170.00	CMYK	CMYK		F
251571-Picnic-Tunesia	2015-05-18 00:00	5000	175.00	CMYK	CMYK	Picnic-Tunesia/Cover0_Picn...	F
glossy (0 7)							
Glossy180g (0 3)							
Lumi Silk (0 1)							
matte coated (0 2)							
matteCoat135g (0 1)							
Pap_Semisilk (0 1)							
Papernumber2 (0 4)							

Filter by Printing Material Quality

Selected Rows: 3 / 73

Create Gang Job...

Log for Job Import

Close after import

Select All Import Close



New features in Prinect Signa Station 2016

Parameter for sheet optimizing (1)

- Control parameter
 - Additional allowance
 - Limitation of blanks/sheet
 - ...
- Informationen on costs
 - Prepress
 - Print
 - Substrate
- Informationen on geometry
 - Margin
 - Sheet break
- Cost and geometry parameter either from plate template or substrate

Advanced Sheet Optimization Setup

Sheet Optimization

Optimize: Horizontal Vertical General

Distance: 0.0

Max. No. Articles: 0 Sheet Brake Total: 0

Quantity as Multiple of: 100 Overproduction: 0.0 %

Allow 1up on Different Press Sheets

Press Sheet Allowance (Base): 0 (percentage): 0

1up Allowance (Base): 0 (percentage): 0

Cost Data for Optimization

Press (hourly rate): 0 Sheets per Hour 0

OK Cancel

Sheet Optimization Setup

<MSO - Standard> Sheet Optimization Setup: MSO - Standard

Use Optimization Parameters from Plate Template

Left Margin: 0.0 Right: 0.0

Bottom Margin: 0.0 Top: 0.0

Cost Data for Optimization

Print Preparation (global): 250.0 (per separation): 0.0

Printing Material (per 1000 sheets): 100.0

Less Plates -10 -8 -6 -4 -2 0 2 4 6 8 10 Less Sheets

Advanced Settings...

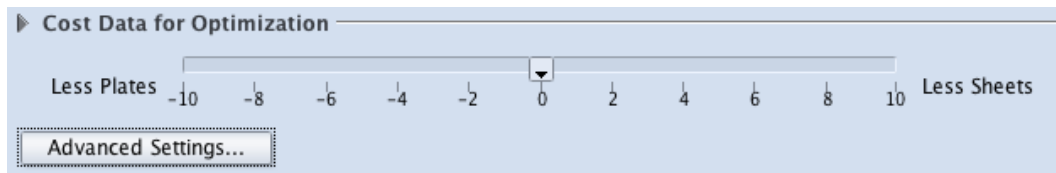


New features in Prinect Signa Station 2016

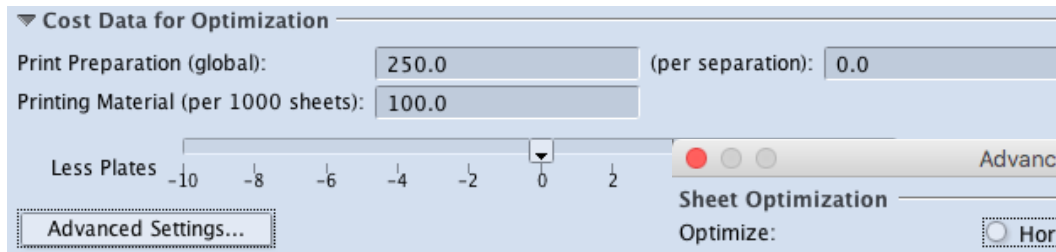
Parameter for sheet optimizing (2)

→ Adaptable user interface for capturing cost parameters

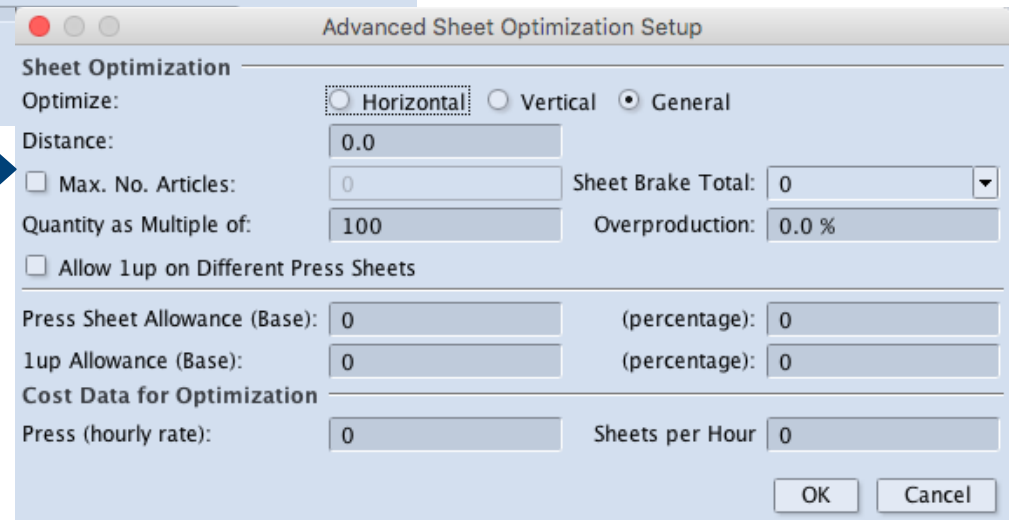
→ Basic



→ Standard



→ Professional





New features in Prinect Signa Station 2016

Display of optimization results

→ For all working modes

→ Detailed results under “results”

→ Summary of most important results under “Optimization”

Results

Optimization Result

Total Real Costs:	1230.34	Total Sheet Count:	10900
Efficiency Factor:	72.83 %	Number of Varying Press Sheets:	2
Different Objects:	18	Splits:	0
Total Target Quantity:	125200	Total Allowance:	0
Total Waste Quantity:	0	Total Paid Overproduction:	6260
Blank Waste (Sheets):	1806	Printed Waste (Sheets):	1156
Printed Waste (Items):	25140		

Press Sheet

Plate Template: Standard (Job internal) / SM 74 Paper Size: 700.0 mm x 500.0 mm

Sheets	Quantity	Allowance	Area Utilized
1	10500	0	83.55 %
2	400	0	80.43 %

1up

Job	Object	Delivery Quantity	Overproduction
	01EZS0002#10000	10000	500
	01EZS0025#8500	8500	425
	01EZS0025#8500	8500	425
	01EZS0047#9000	9000	450
	01EZS0047#9000	9000	450
	01EZS0045#9000	9000	450
	01EZS0045#9000	9000	450
	01EZS0013#9000	9000	450
	01EZS0013#9000	9000	450
	01EZS0018#10000	10000	500
	01EZS0018#10000	10000	500
	Square05D_EPS0004#5000	5000	250
	Square05D_EPS0007#6000	6000	300
	Square05D_EPS0007#6000	6000	300
	Square05D_EPS0011#2000	2000	100
	Square05D_EPS0011#2000	2000	100
	Square05D_EPS0003#1600	1600	80

Show Placed Folding Sheets/Assembly Blocks

Optimize Report

Job Number: _unnamed 11/13/15 11:36 AM

Total Values:

Total Real Costs:	1230.34
Total Sheet Count:	10900
Efficiency Factor:	72.83 %
Number of Varying Press Sheets:	2
Different Objects:	18
Splits:	0
Total Target Quantity:	125200
Total Paid Overproduction:	6260
Blank Waste (Sheets):	1806
Printed Waste (Sheets):	1156
Printed Waste (Items):	25140
Plate Template:	Standard (Job internal) / SM 74
Paper Size:	700.0 mm x 500.0 mm

Sheets Quantity Allowance Area Utilized

Sheets	Quantity	Allowance	Area Utilized
1	10500	0	83.55 %
2	400	0	80.43 %

No.	Name	Object	Delivery Quantity	Allowance	Overproduction	Waste (pieces)	1	2
1		01EZS0002#10000	10000	0	500	0	1	
2		01EZS0013#9000	9000	0	450	1050	1	
3		01EZS0013#9000	9000	0	450	1050	1	
4		01EZS0018#10000	10000	0	500	0	1	
5		01EZS0018#10000	10000	0	500	0	1	
6		01EZS0025#8500	8500	0	425	1575	1	
7		01EZS0025#8500	8500	0	425	1575	1	
8		01EZS0045#9000	9000	0	450	1050	1	
9		01EZS0045#9000	9000	0	450	1050	1	
10		01EZS0047#9000	9000	0	450	1050	1	
11		01EZS0047#9000	9000	0	450	1050	1	
12		Square05D_EPS0003#1600	1600	0	80	320	5	
13		Square05D_EPS0003#1600	1600	0	80	320	5	
14		Square05D_EPS0004#5000	5000	0	250	5250	1	
15		Square05D_EPS0007#6000	6000	0	300	4200	1	
16		Square05D_EPS0007#6000	6000	0	300	4200	1	
17		Square05D_EPS0011#2000	2000	0	100	700	7	
18		Square05D_EPS0011#2000	2000	0	100	700	7	



New features in Prinect Signa Station 2016

Changes for optimized ganging results

- Delete complete sheets
 - Jobs on this sheet are transferred back to gang pool
- Optimum usage of material by deleting or adding single jobs
- Subsequent adaptation of delivery amount of single jobs

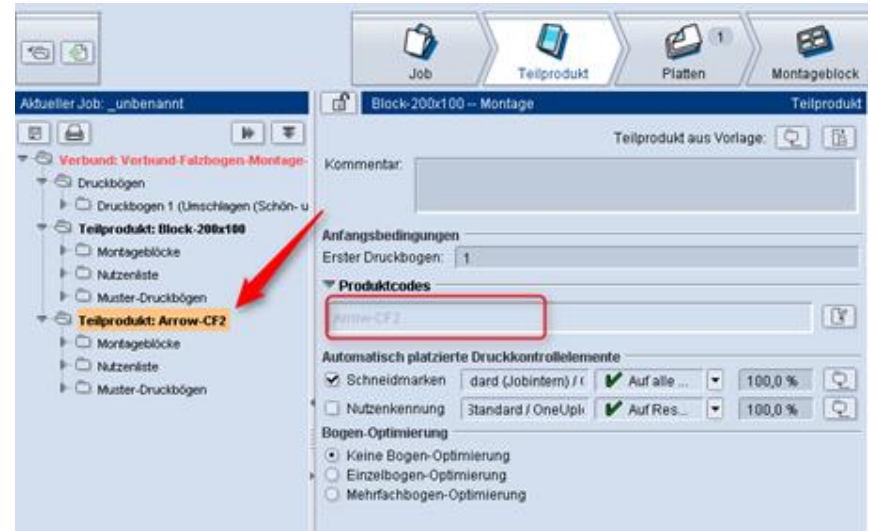
- After each change optimization results are recalculated



New features in Prinect Signa Station 2016

Gang jobs with CFF2 data

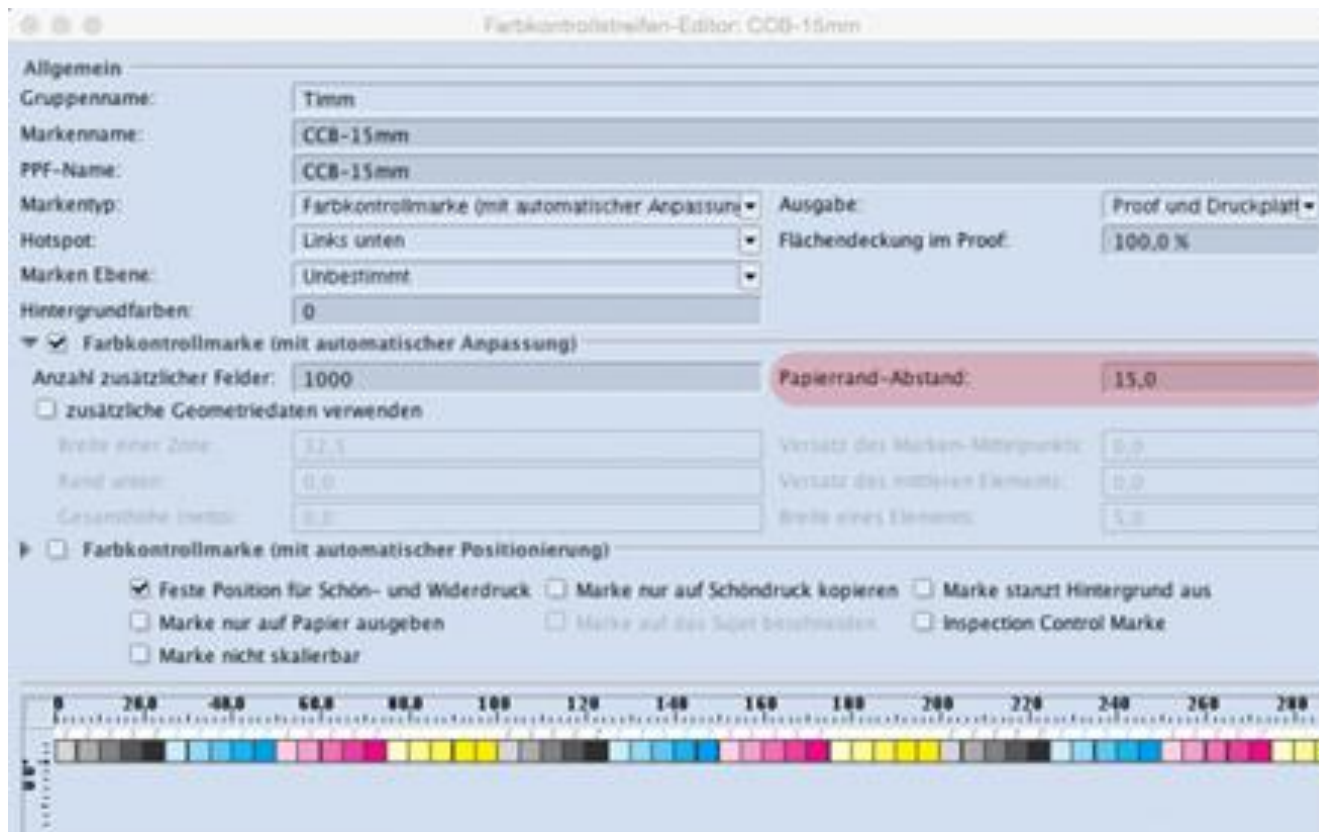
- Assembly blocks based on CFF2 for gang forms with cut&stack labels
- Mixing part products type “Impositioning” and “Assembly” with CFF2. This cluster can be used as layout template
- Easy filtering by paper quality
- Subsequent adaptation of delivery amount of each job
- Transfer of results to Business Manager





New features in Prinect Signa Station 2016 Marks (1)

- Limitation of maximum color in “Ink eater editor”
- New attribute “distance to paper margin” in color bar editor

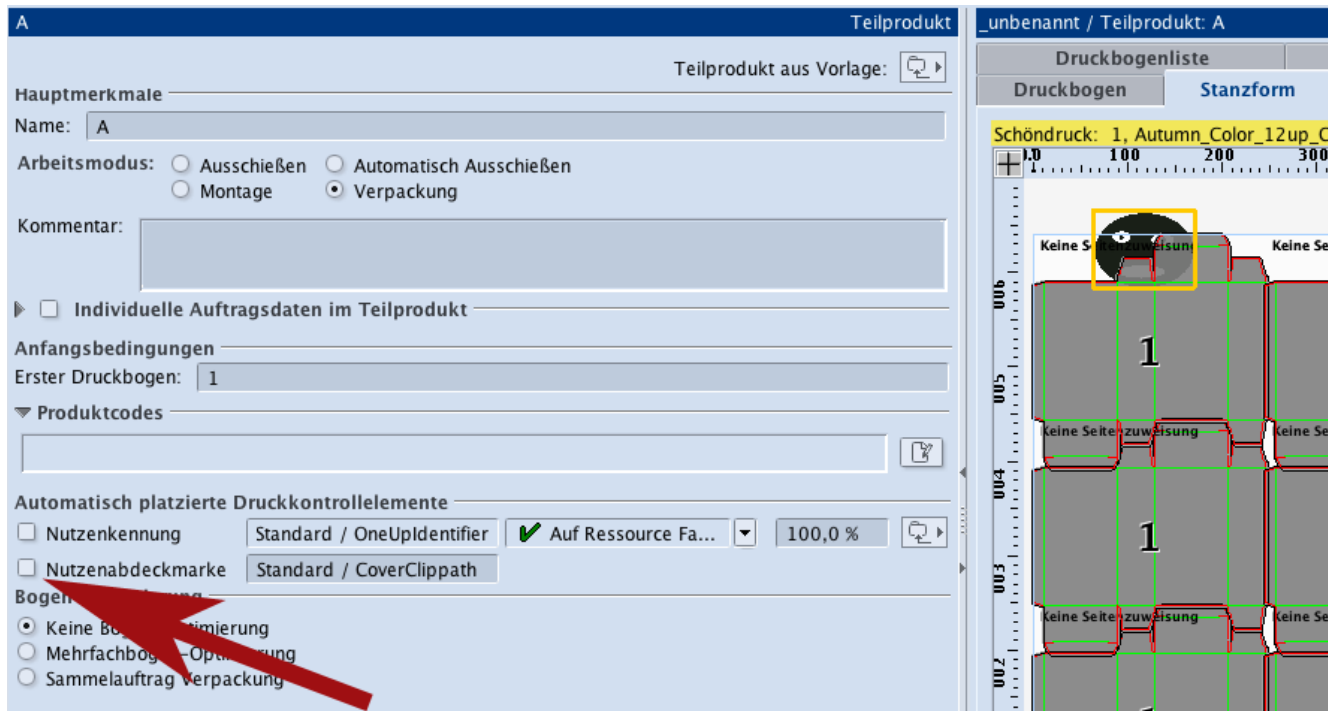




New features in Prinect Signa Station 2016

Marks (2)

- Limitation of maximum color in “Ink eater editor”
- New attribute “distance to paper margin” in color bar editor
- Automatic cover clip path mark
- Optimated dialog for “automatic marks”





Please ask your questions!

INTERNATIONAL
PRINECT USER DAYS

For further information please contact sabine.roob@heidelberg.com

Thank you for your attention!

HEIDELBERG

