

Workshop 4 Gang Runs – how can I use them sensibly?

Meino v. Spreckelsen
Christian Kaack
Wiebke Stoltenberg

INTERNATIONAL
PRINECT USER DAYS

18th and 19th November 2015





Ganging Workflow? What's in for me?

Placing a variety of ,small' jobs on larger printing devices ...

→ Better machine utilization

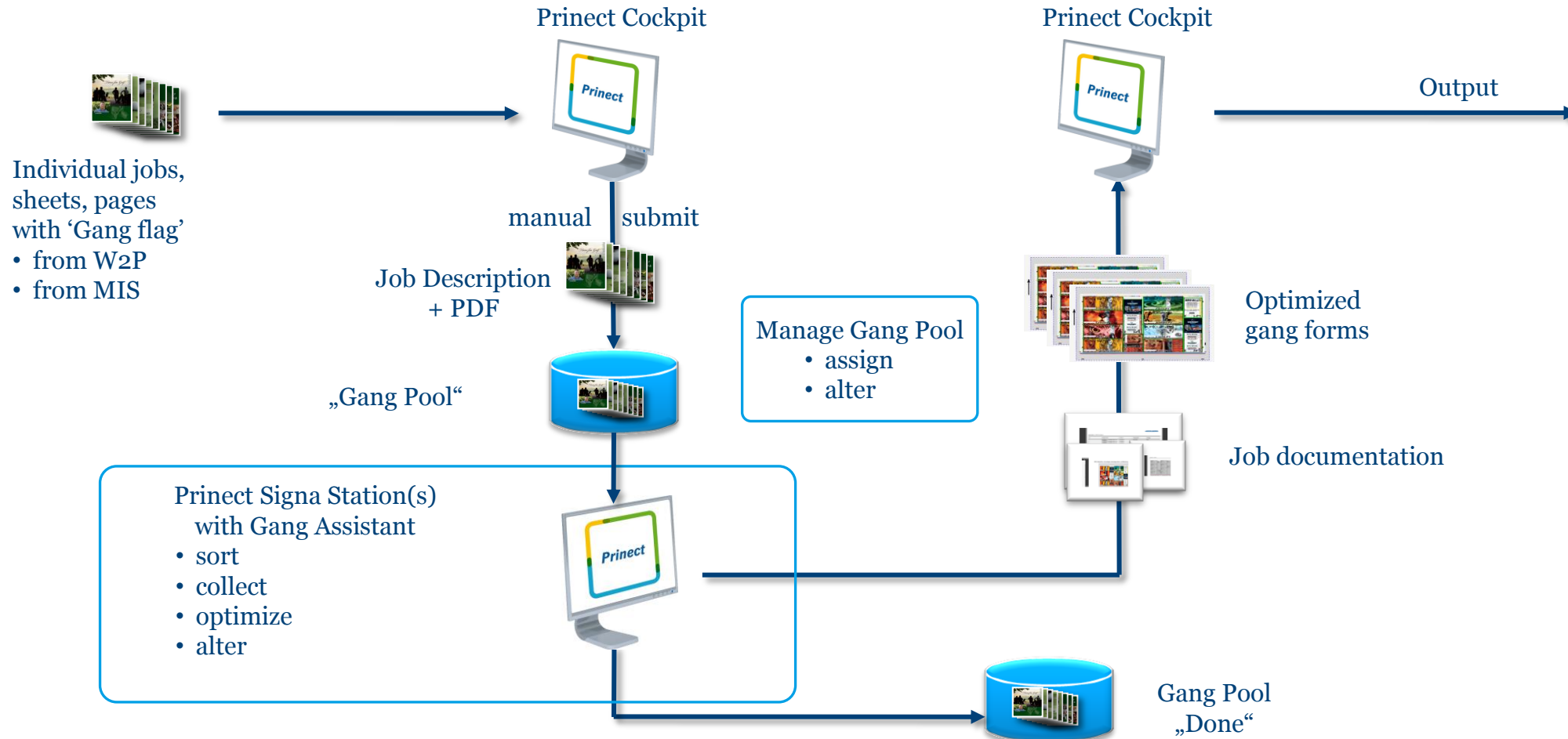
→ Extends the variety of jobs you as printers can offer at competitive pricing
(less makeready time, production time, printing material (waste))

→ Prinect Gang Assistant automatically calculates optimal gang forms

→ Prinect provides the overview on customer jobs and their production status in gang jobs
- not only in the production workflow BUT ALSO in Business Manager



Prinect Ganging Workflow





Prinect Ganging 2016 – fit for production demands

- Easier / earlier access to gang pool from Prinect Signa Station and Prinect Cockpit
- Use pre-defined Layouts
(e.g. for specific finishing equipment and for further ganging automation)
- Prinect Gang Assistant calculates results for several plate templates
– and utilizes the optimum alternative
- possibility to alter gang forms
- Planning / delegation of work steps improved
- Better status / relation tracking for source and gang jobs
- Gang forms of versioned covers



Gang Runs – (how) can I use them sensibly?

1. Input to gang pool
 - without MIS/Web Shop
 - submit Cover to ganging
 - submit job from job list to ganging
 - Web Shop with Smart Automation (or MIS)
 - Sketchbook-Cover was sent to gang pool automatically / job info from Smart Automation with all job info
2. Is it sensible to start a gang job ? – Gang Pool can be opened from Cockpit
3. Create and produce gang job(s)
Create – make form(s) with Prinect Signa Station Gang Assistant (– change gang form)– ‘print ‘ gang form info – produce + follow status
4. NEW: Integrated workflow with Business Manager



Ganging in Production

Submit to Ganging

→ Regard MIS Paper for Gang Pool Description

→ Allow parts of a multipage file

→ Allow sheets of versioned layouts

Submit to Ganging

Sheet: FB 001 8 pages affected

-Product-

Delivery quantity:

Product Code:

Version:

Folding:

-Sequence-

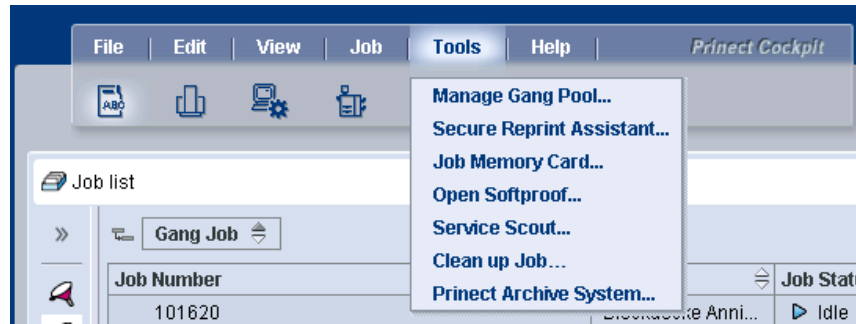
Surface	Count
0502_MJ	(2 0)
FB 001	(3 0)
Versions : 01: Deu Spa	(0 1)
Einzelform Umschlagen	
Versions : 02: Spa Eng	(0 1)
Versions : 03: Eng	(0 1)
FB 002	(2 0)



Ganging in Production

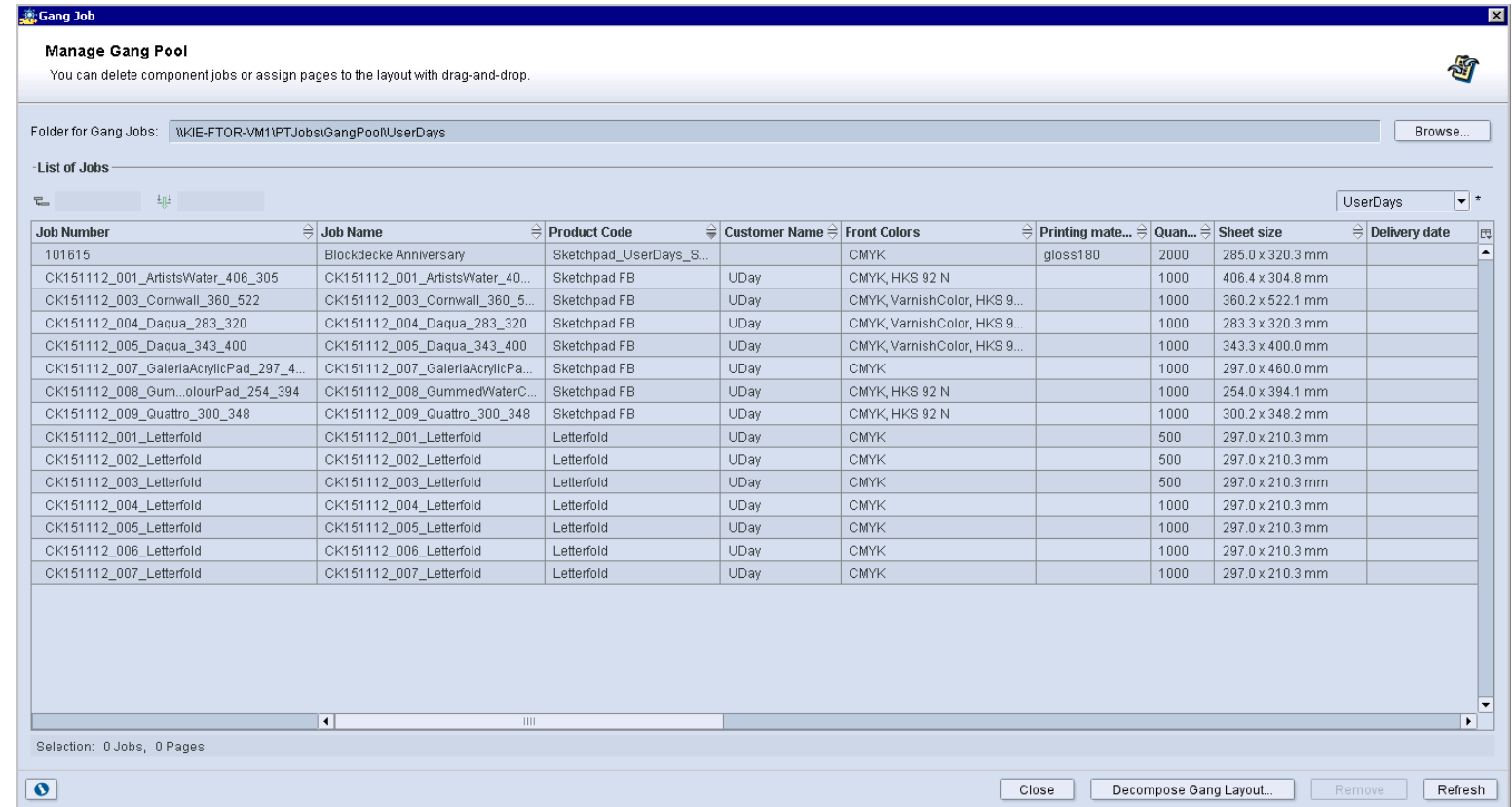
Manage gang pool ...

Can also be opened from Cockpit



→ to judge the fill grade before starting a gang job

→ To make changes to existing gang layouts

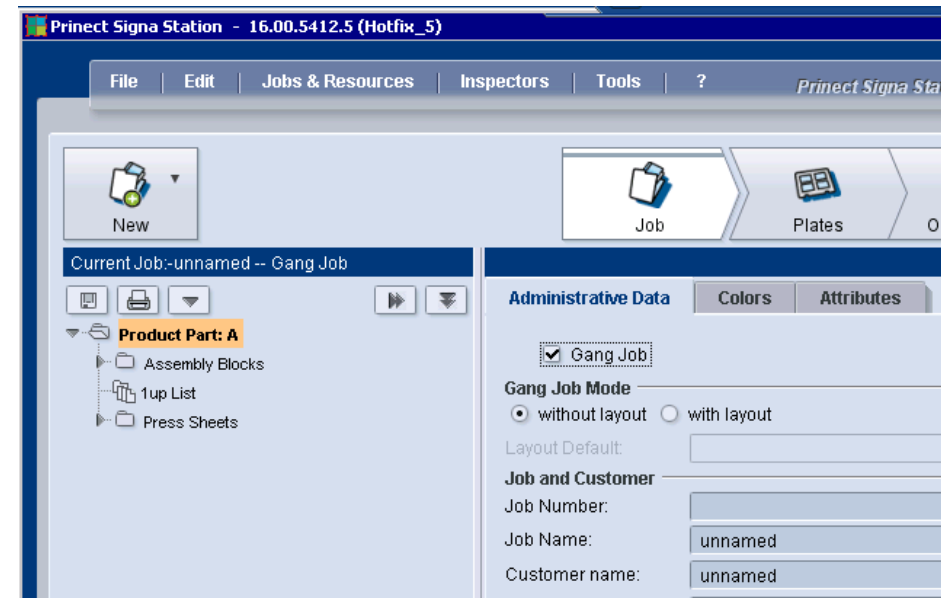
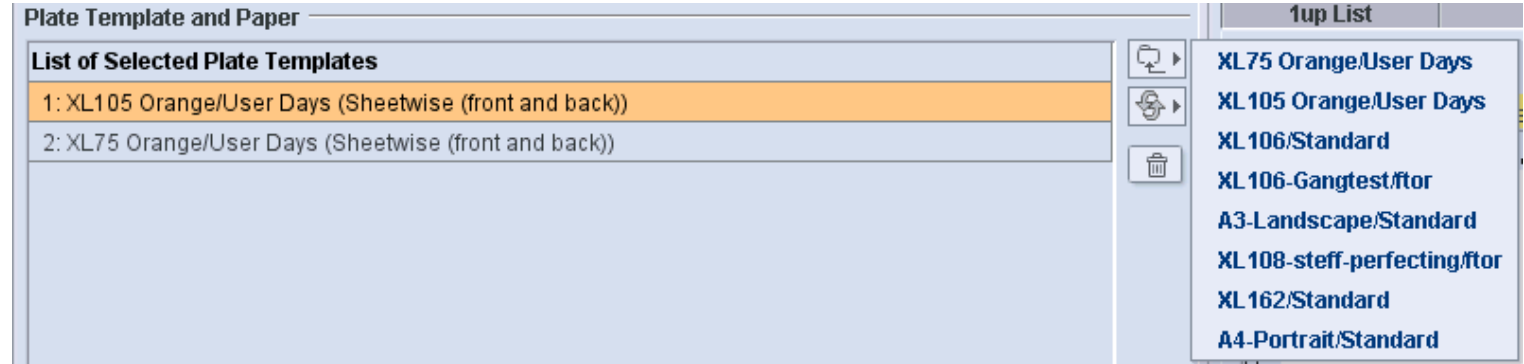




Ganging in Production

Improvements in Prinect Signa Station Gang Assistant

- Better Results of Gang Assistant (Geometry, Cutting)
- Optimization can be calculated for several plate templates – and the best result is taken
- Use predefined Layouts in Gang Assistant
- Use Predefined Product Part Template for MIS-Jobs / predefined Layouts





Ganging in Production

Assign gang parts directly from Gang Monitor (Manage Gang Pool)

→ Show no. of selected Elements
(Gang Parts, Pages)

→ Directly Assign Gang Parts to
Layout positions

→ incl. multiple assignment

The screenshot displays the Gang Monitor software interface. The main window shows a layout grid with various elements and their counts. The 'Manage Gang Pool' panel on the right provides details for the selected job.

Layout Grid:

17	19	20	18
13	15	16	14
BC2 9	11 10	12 10	BC2 10
BC2 5	BC2 7	BC2 8	BC2 6
BC2 1	BC2 3	BC2 4	BC2 2

Manage Gang Pool Panel:

Folder for Gang Jobs: WKIE-WF16PRDYPTJobs\GangPool

- List of Jobs -

Printing material

Path	Qu...	Num...
▶ Printing material : Glossy (0 2)		
☑ Printing material : MattCoated (0 1)		
WKIE-WF16PRDYPTJ..._2Sided_Green.pdf	500	2

Selection: 1 Job, 2 (x5) Pages

Buttons: Close, Resolve



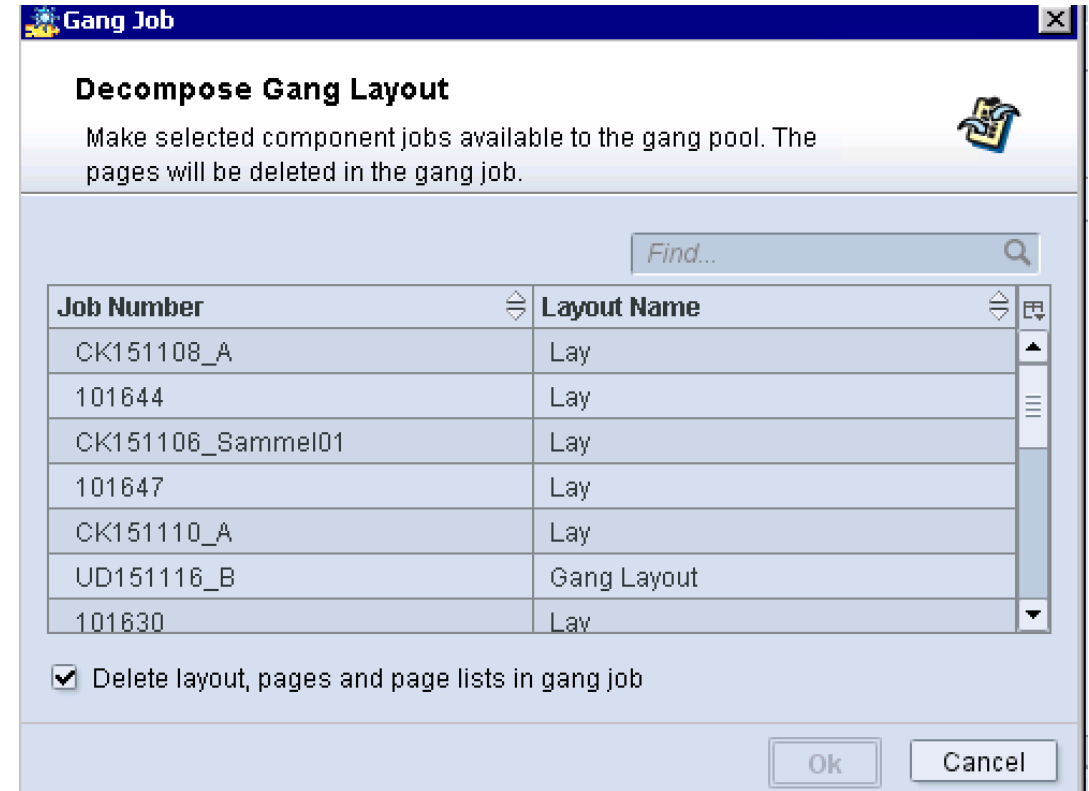
Ganging in Production

Change gang form

- Remove Gang Part
 - i.e. Page shall be produced in customer job

- Decompose Gang Layout
 - i.e. re-introduce the Gang Parts into the Gang Pool

- Copy/Paste of Gang Monitor Table
 - E.g. to get it into Excel





Ganging in Production

Easy Job Relation and Status tracking in Job List

Column Set „Ganging“

- Grouping by „Gang Job“
- Hyperlink to Gang Job

Column „Status in Gang Job“

- Monitor status of ganged parts in Gang Job

Job Number	Job Name	Job Status	Processin...	Workflow Status	Status in Gang Job	Job Flags	Due Date	Delive...	Customer Na...
-	(0 49)								
In gang pool	(0 15)								
CK151107_A	(0 7)								
CK151107-003_Artists Water 406x305	CK151107-003_...	▶ Idle	⚠ Warning		Plates imaged			1000	UserDay Dem...
CK151107-005_Cornwall 360x522	CK151107-005_...	▶ Idle	⚠ Warning		Plates imaged			1000	UserDay Dem...
CK151107-006_Daqua 283x320	CK151107-006_...	▶ Idle	⚠ Warning		Plates imaged			1000	UserDay Dem...
CK151107-007_Daqua 343x400	CK151107-007_...	▶ Idle	⚠ Warning		Plates imaged			1000	UserDay Dem...
CK151107-009_Galeria Acrylic Pad 297x460	CK151107-009_...	▶ Idle	⚠ Warning		Plates imaged			1000	UserDay Dem...
CK151107-011_Gummed Water Colour Pad 25...	CK151107-011_...	▶ Idle	⚠ Warning		Plates imaged			1000	UserDay Dem...
CK151107-014_Quattro 300x348	CK151107-014_...	▶ Idle	⚠ Warning		Plates imaged			1000	UserDay Dem...
CK151108_A	(0 5)								
CK151106_10	CK151106_10	▶ Idle	⚠ Warning		In gang job			500	UserDay Dem...
CK151106_11	CK151106_11	▶ Idle	● OK		In gang job			500	UserDay Dem...
CK151106_12	CK151106_12	▶ Idle	● OK		varying			500	UserDay Dem...
CK151106_13	CK151106_13	▶ Idle	⚠ Warning		varying			500	UserDay Dem...
CK151106_14	CK151106_14	▶ Idle	● OK		In gang job			500	UserDay Dem...
CK151109_A	(0 2)								
CK151112_A	(0 3)								
CK151112_001	100 Jahre Offset	▶ Idle	⚠ Warning		In Part		Dec 24, 2015 3:...	2500	UserDay Dem...
CK151112_002	Villeroy & Boch	▶ Idle	⚠ Warning		In Part		Nov 24, 2015 3:...	2500	UserDay Dem...
CK151112_003	Testseiten	▶ Idle	⚠ Warning		In Part		Dec 24, 2015 3:...	5000	UserDay Dem...



Ganging in Production

Easy Status tracking with “Status in Gang Job”

- "-" No Ganging
- Error Ganging intended but inconsistent
- Ganging intended MIS flagged all sheets for ganging
- In gang pool all sheets/ pages in the Gang Pool
- In gang job all sheets/ pages on a Gang Form in a Gang Job
- Plates imaged all sheets/ pages ganged and plates made
- Printed all sheets/ pages ganged and printed
- Cut all sheets/ pages ganged and cut
- Varying all sheets/ pages ganged but with different status
- In Part a part of the sheets/ pages are ganged

Gang Job	Job Numb
Status in Gang Job : ? (0 380)	
Status in Gang Job : Cut (0 4)	
Status in Gang Job : Ganging Intended (0 18)	
Status in Gang Job : In gang job (0 1)	
Status in Gang Job : In gang pool (0 7)	

→ New Global Status „Canceled“



Ganging in Production

Easy Job Relation tracking

- Column Sets „**For Ganging**“ and „**Ganging**“
 - Page and Layout oriented views
- Gang Job and Source Job

- In Customer job (Source Job)
 - Column with Hyperlink to Gang job
 - Columns to show on which Layout / Sheet in Gang job
 - „Status in Gang Job“ for Pages and Sheets (like in JobFinder)

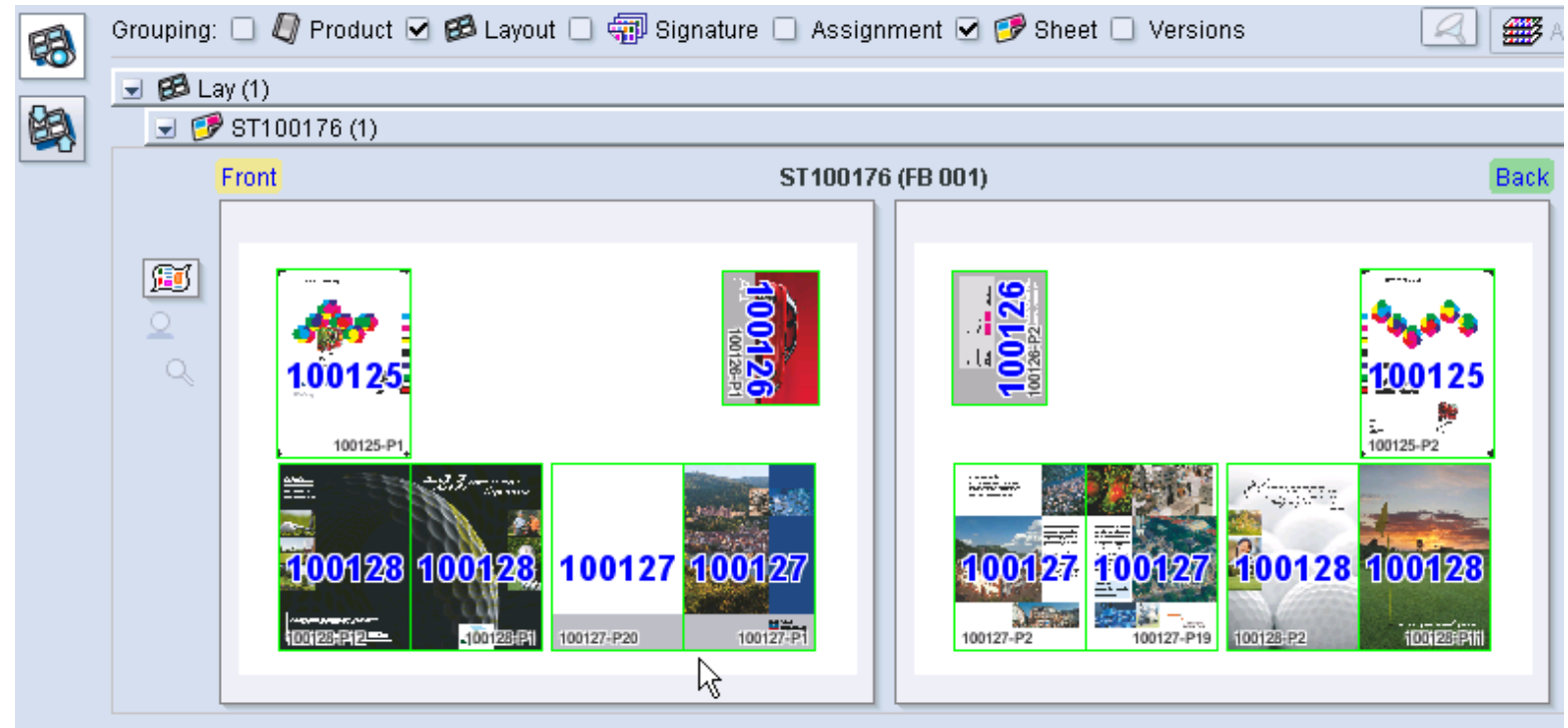
Surface	Lay	Source Job Number	Planned Amount
FB 001	(0 2)	CK151107-005_Cornwall 360x522 , CK151107-014_Quattro 300x348 , CK151107-011_Gummed Water Colour Pad 254x394 , CK151107-006_Daqua 283x320	1000
FB 002	(0 2)	CK151107-003_Artists Water 406x305 , CK151107-007_Daqua 343x400 , CK151107-009_Galeria Acrylic Pad 297x460	1000

Name	Status in Gang Job	Layout in Gang Job	Sheet in Gang Job	Σ ...	Σ Prepare	TrimBox
CK151107_A	(0 2)			⚠	⚠	
CK151107-011_Gummed Water Colour Pad...	Plates imaged	Lay	FB 001	⚠	⚠	254.0 x 394.0
CK151107-011_Gummed Water Colour Pad...	Plates imaged	Lay	FB 001	⚠	⚠	254.0 x 394.0



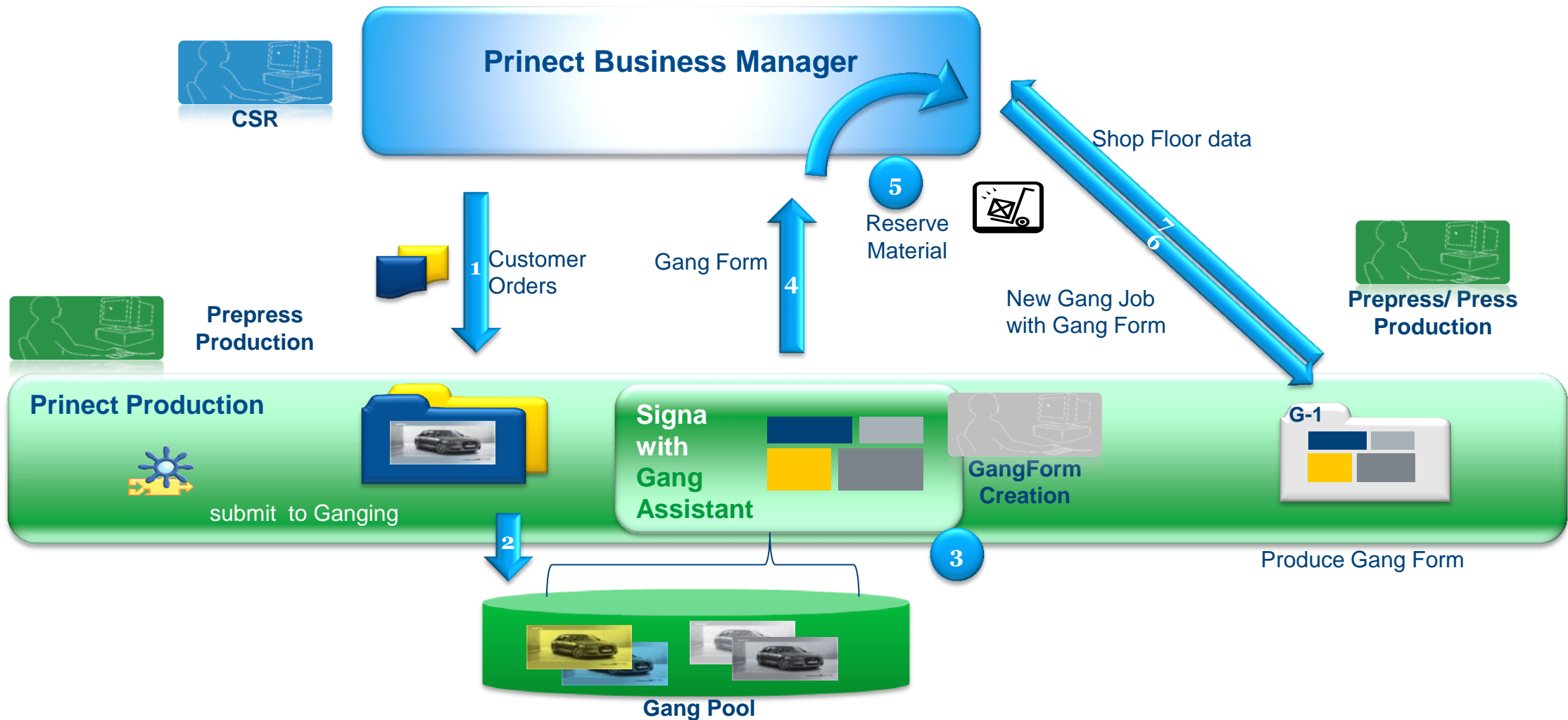
Ganging in Production: Easy Job Relation tracking in Gang Job

- Column with Hyperlinks to Customer jobs
- Show Customer job on Thumbnail
- context menu to open Customer job
- Indicate changed source Page
- Approval of pages in customer job has effect in Gang Job





Ganging Workflow – MIS and Production teaming up: Princt Business Manager and Integration Manager





Prinect Ganging 2016 – fit for production demands

→ Questions ?

→ Suggestions?