

INTERNATIONAL
PRINECT USER DAYS

WS 21a

Prinect Business Manager News



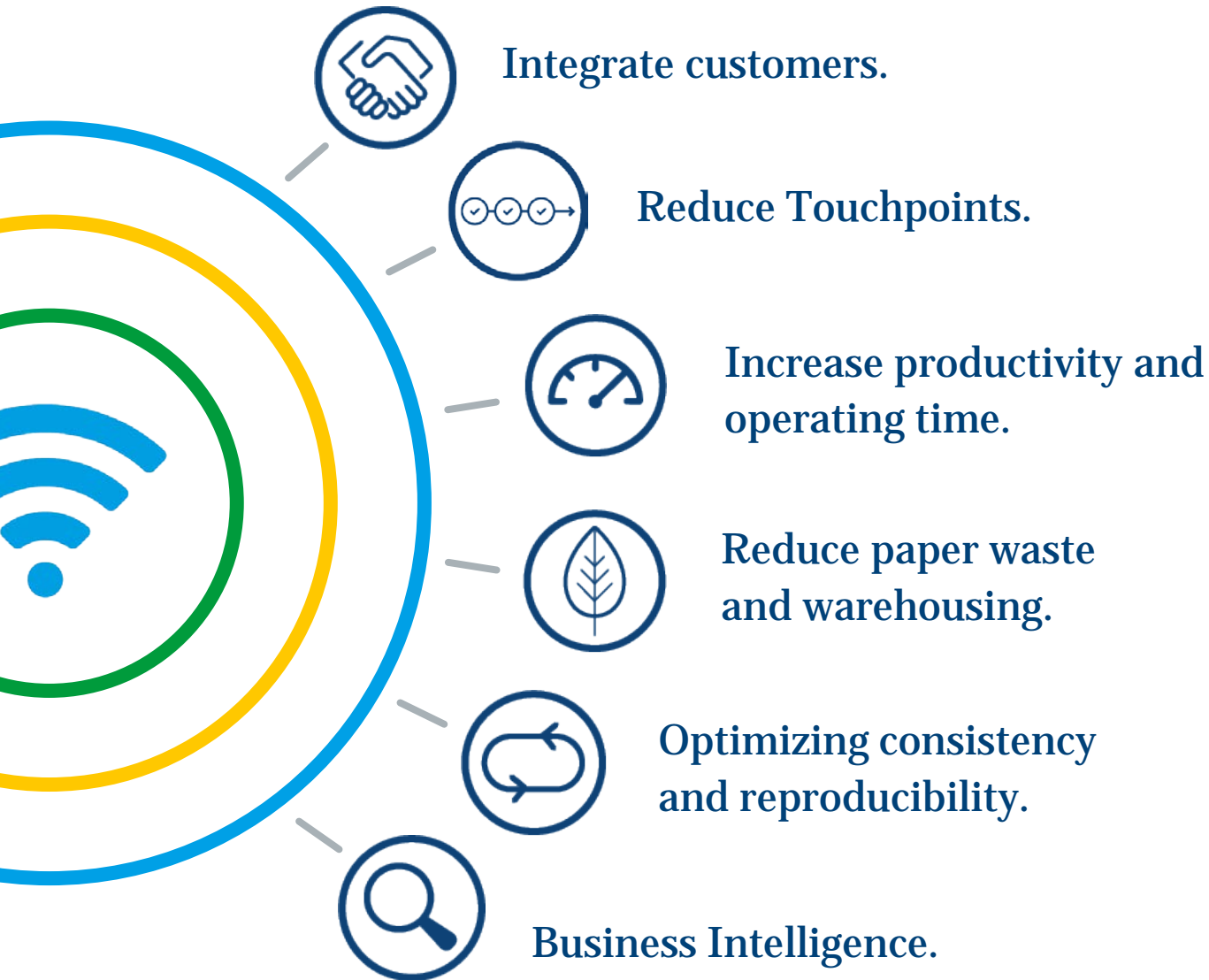
Agenda

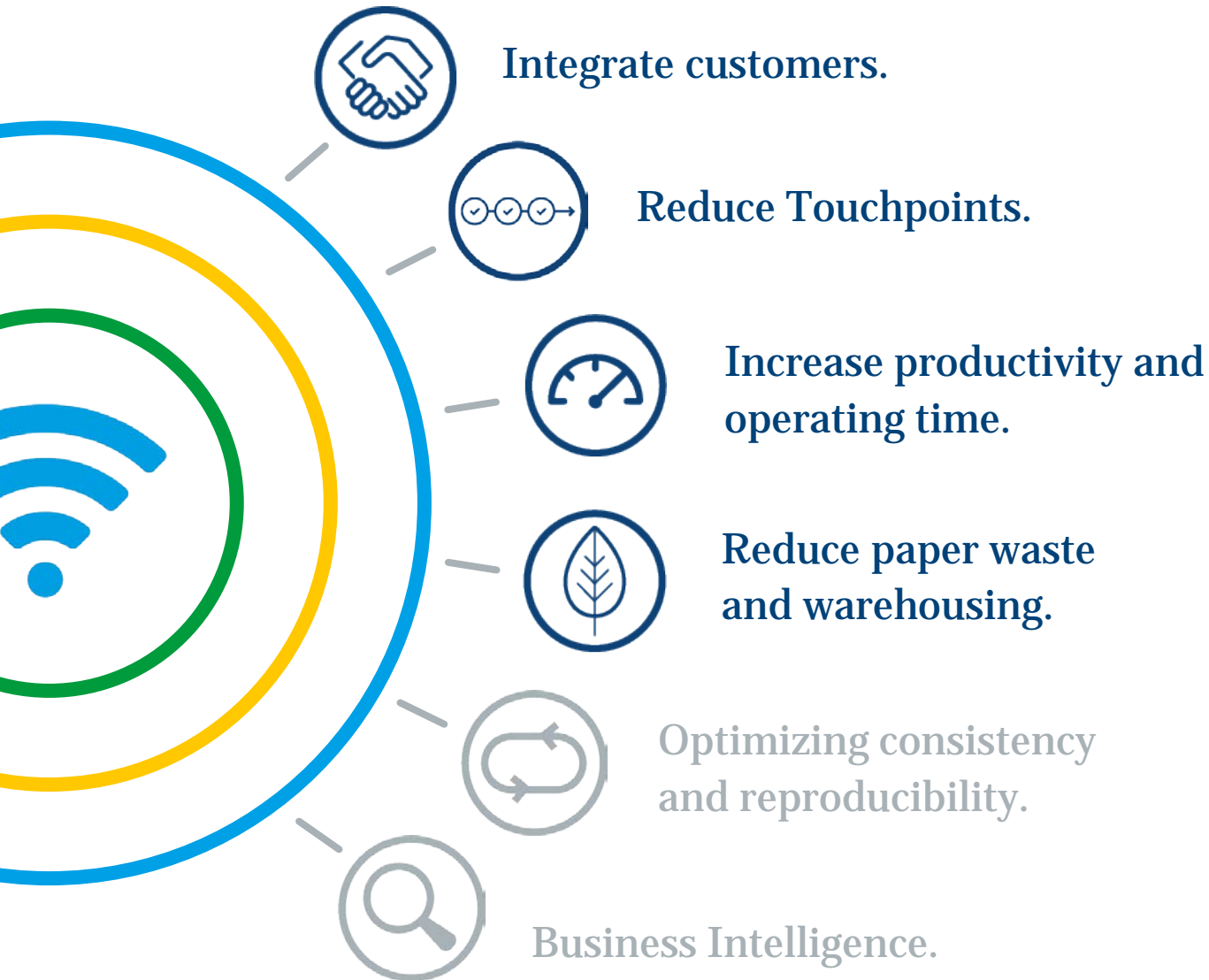
- New MIS functionalities in Prinect Portal
- Extended integration with Prinect production workflow
- New milestone solution
- Extended logistic interface

WORKSHOP

21a









What's new in our integrated Portal / MIS solution:
Get it fast and easy from Request for Quote
to delivery - with Prinect Portal.



Estimating – much more than just finding the right price:

- Just a few clicks to define the desired product in the Prinect portal
- Automatic estimating: finds cheapest production path
- Predefines all production steps



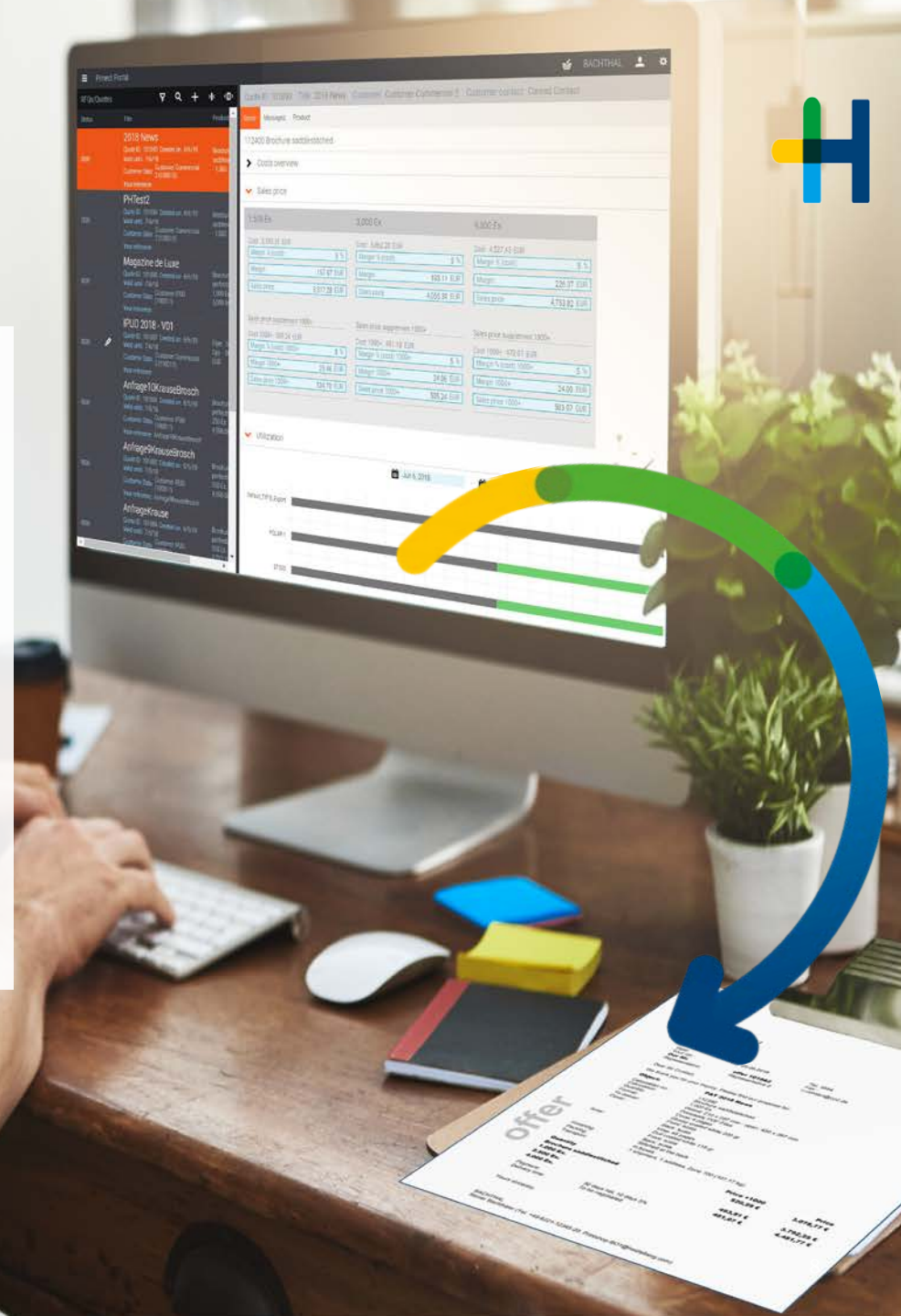


Automatic quote generation via Prinect Portal.

NEW:

- Selection of the packing
- Selection of transport options/costs
- Additional standard processes in Prepress and Postpress can be configured

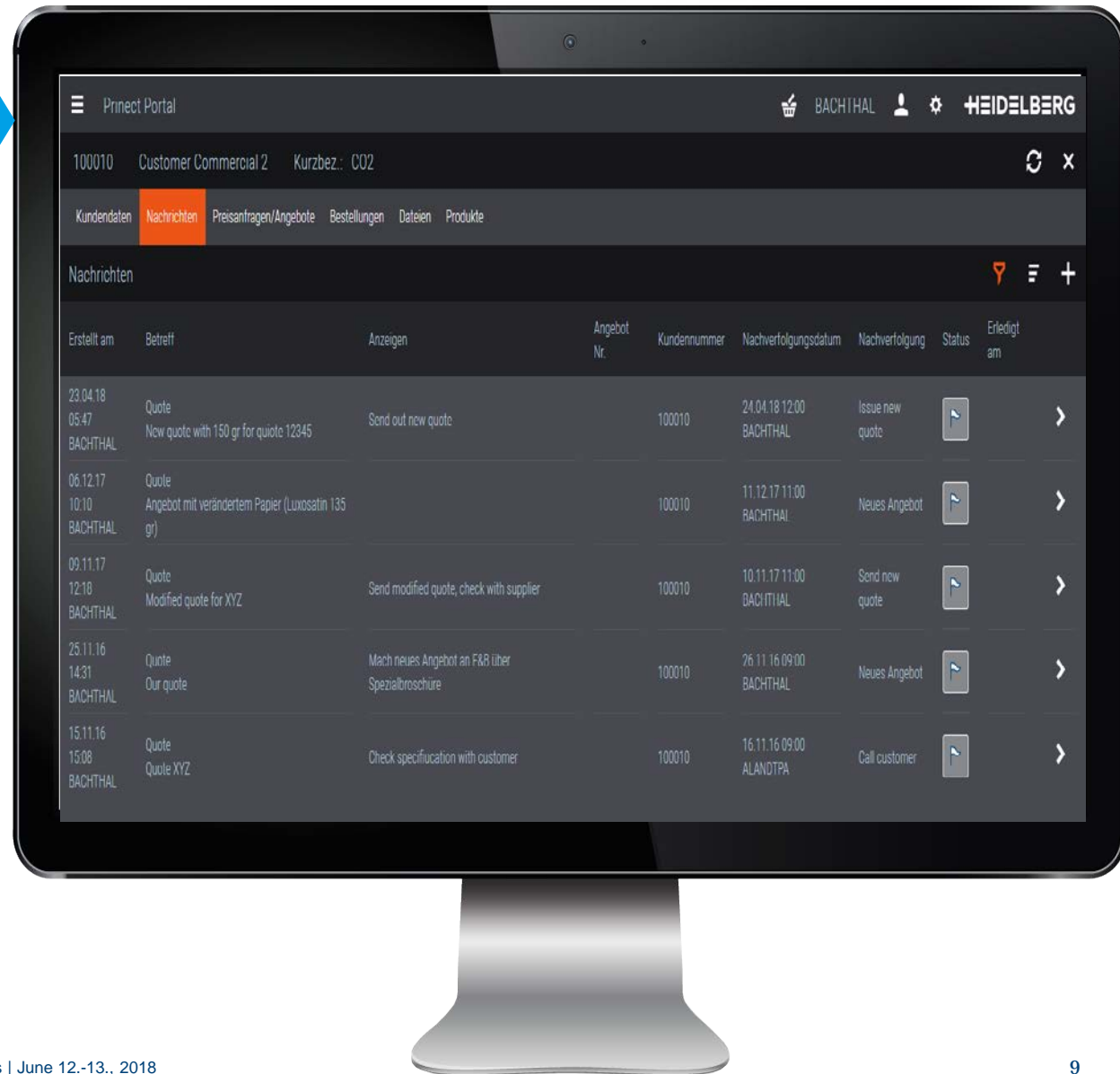
Up to 90% reduction of the efforts for quote generation





LIVE DEMO Prinect Portal. New structure and extension of the MIS functionality.

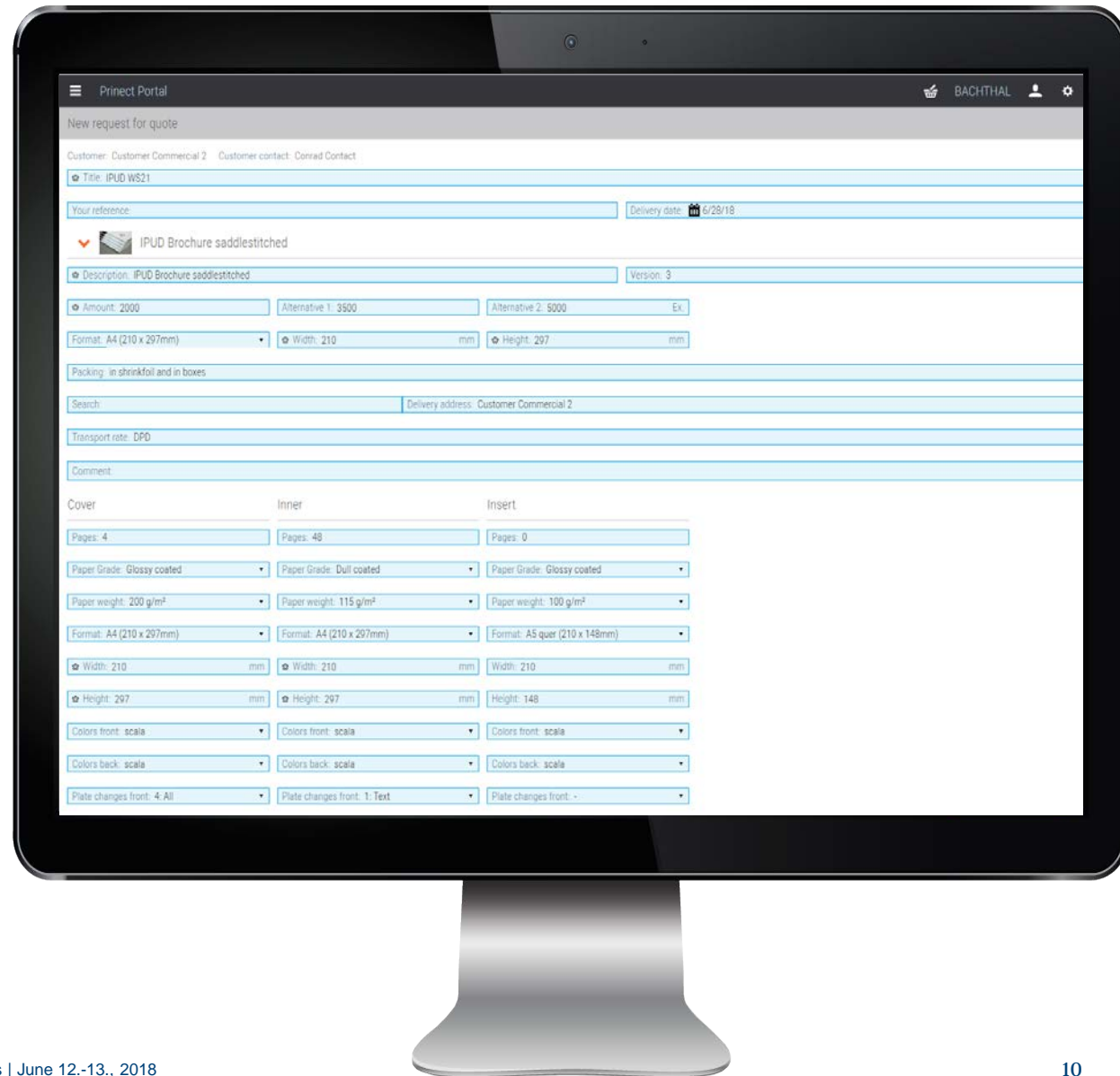
- **Messaging** module of Prinect Business Managers now also available in the Portal
- **Easy creation and follow up of internal processes**

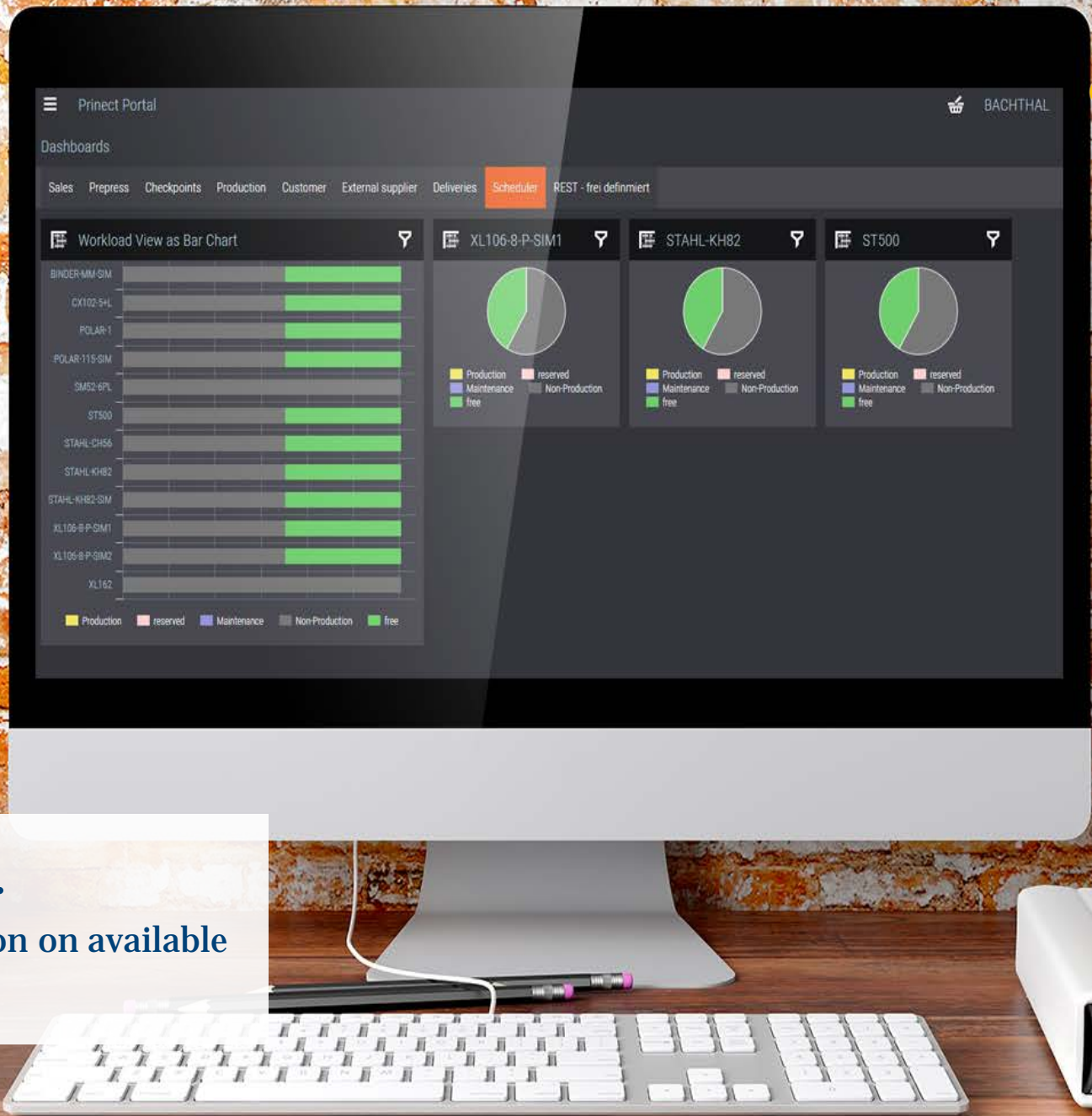




LIVE DEMO Prinect Portal. Extension of the MIS functionality.

- Use of predefined products
- Extended product type predefinition
- Creating quote variations
- Order with multiple deliveries
- How to use Prinect Portal for printbuyer



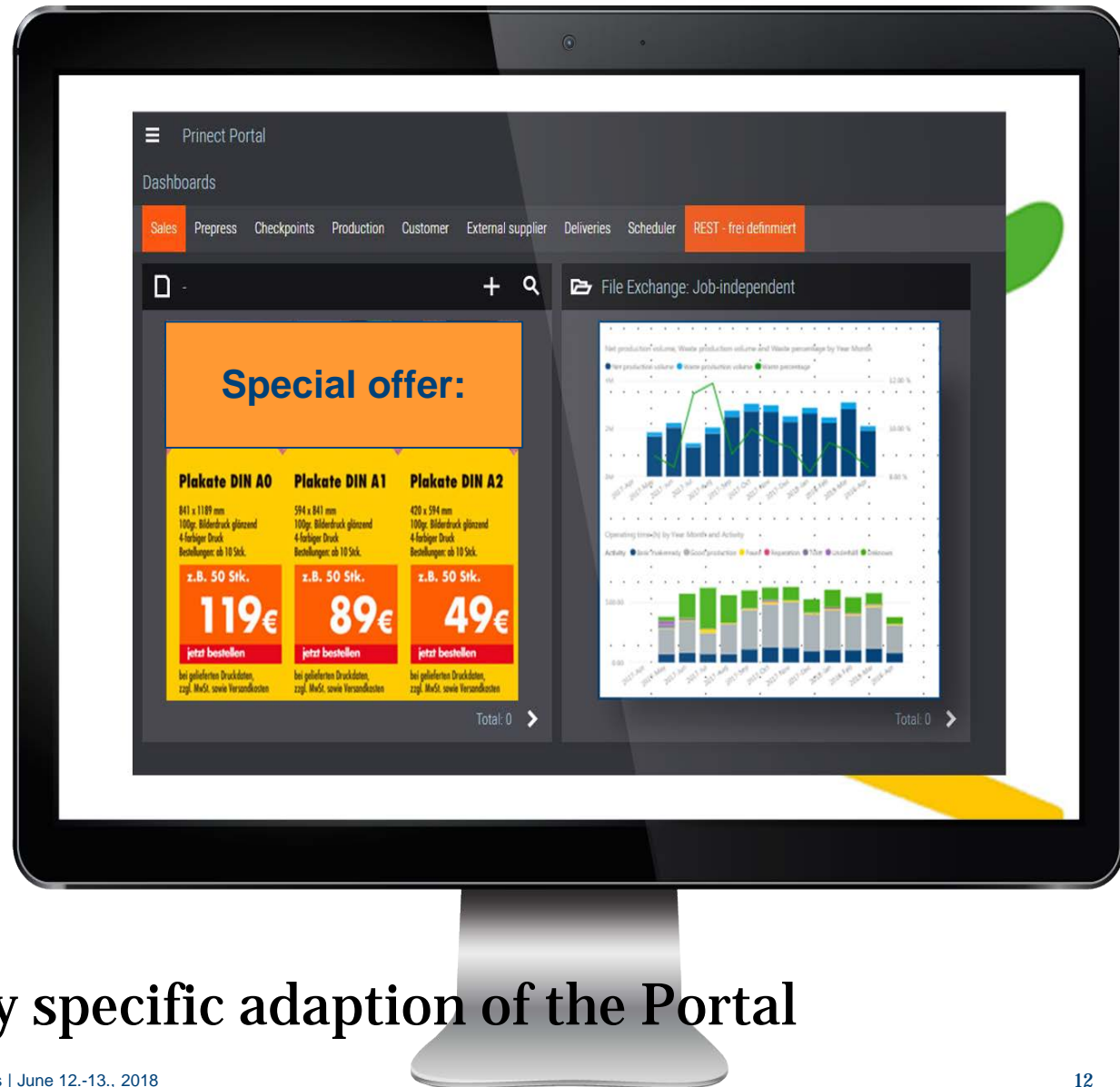


Princt Portal.

Extended information on available production capacity.

Princt Portal. Free definable widgets.

- Show any (3rd party) info directly in Princt Portal
- Progaming (by user) via REST interface
- Support of displaying pictures, lists as well as various diagrams



Higher flexibility by specific adaption of the Portal



Complete Integration. Business & Production workflow.

- Online order and data upload in the portal
- Automatic job creation in MIS and production
- Automatic predefinition, optimization and start of the production

Angebot						
Status:	Angebot Nr.:	Gültig bis:	Erstellt am:	Liefertormat:	Ihr Zeichen:	Unterschreiber:
Angebot	101664	27.11.16	28.10.16	05.11.16	-	Reiner Bachthaler
Angebotstext: Anzeigen						
Bestellung: 101664 - Broschüre drahtgeheftet						
1.000 Ex.:				2.228,87 EUR	Im Warenkorb:	1.500 Ex.
+1.000 Ex.:				430,23 EUR	Aufträge: *	1.500
4.000 Ex.:				3.489,96 EUR	Liefertermin:	05.11.16
+1.000 Ex.:				423,41 EUR	Bestell Nr.:	heim Kunden
8.000 Ex.:				4.569,71 EUR	Kommentar:	
+1.000 Ex.:				348,06 EUR	Lieferadresse:	Hornendruck GmbH
Format:	geschlossen: 210 x 297 mm			offert: 420 x 297 mm	Preis:	2.443,99 EUR
Vorlagen:	druckfertige PDF-Daten geliefert					
Umschlag:	4 Seiten					
Papier:	1200 g/m ²					
Druck:	0					





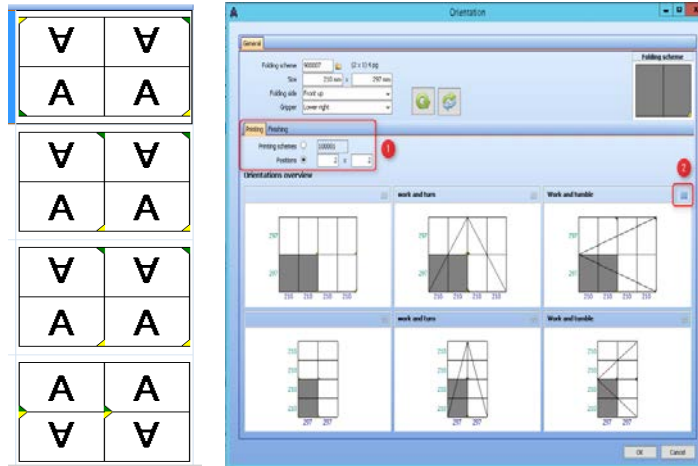
Extended integration between Prinect Business Manager and Prinect production workflow



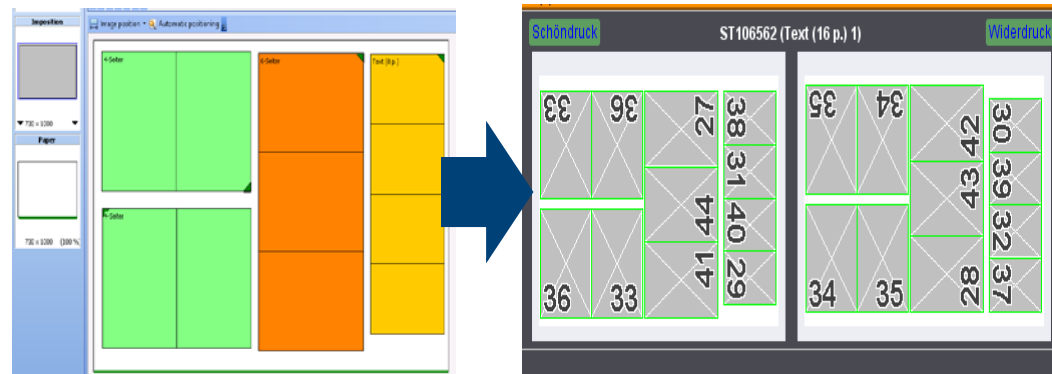


Extended Integration of Prinect Business Manager with Prinect production workflow

- Full predefinition of folding sheet orientation in MIS (and transfer to production)



- Gang form: Define exact position for each element in MIS and send it to Signa Station



MIS

Production

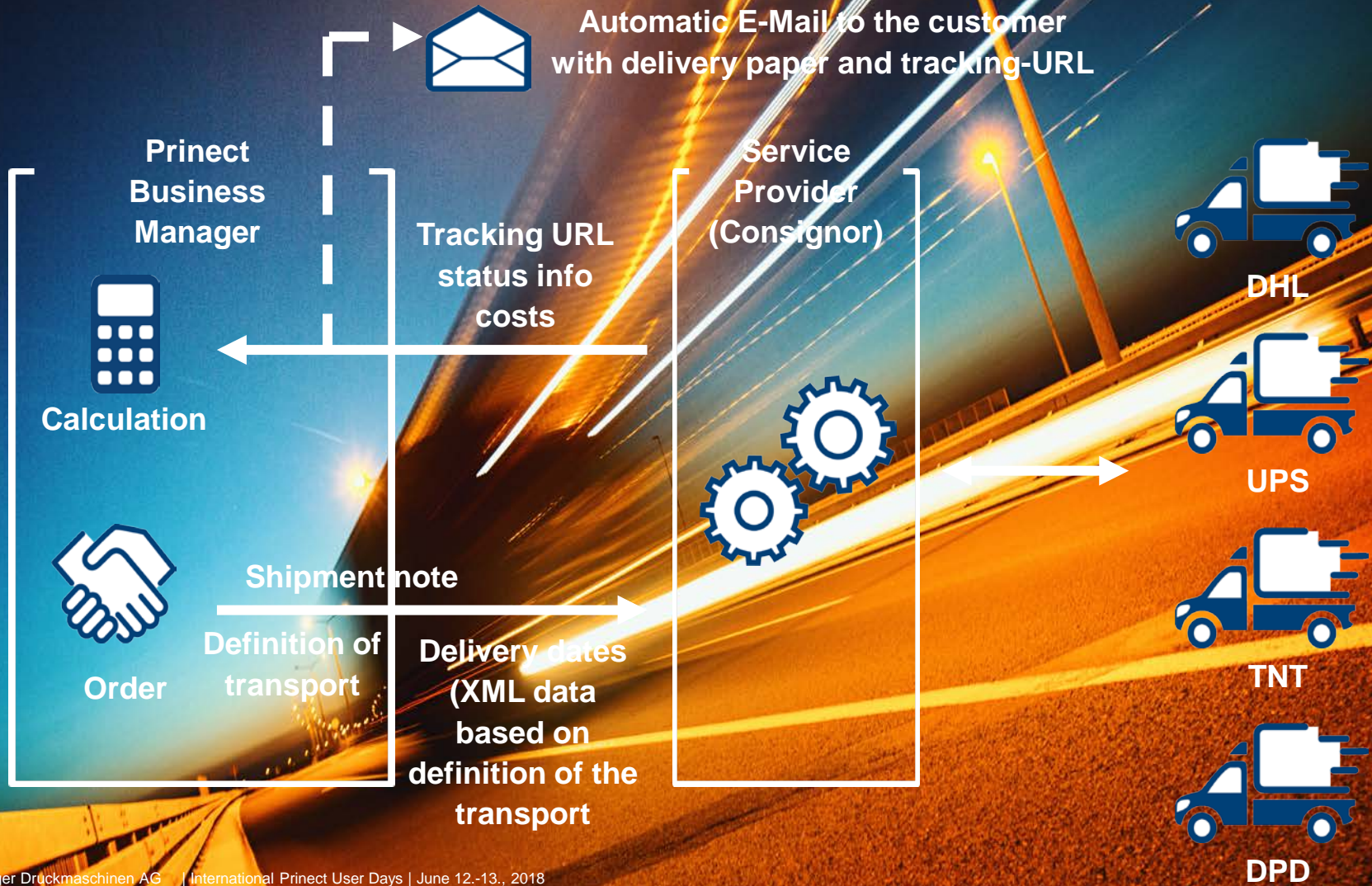


Streamline shipment and delivery
with Prinect Portal and smart interfaces.





EDI-based logistics interface

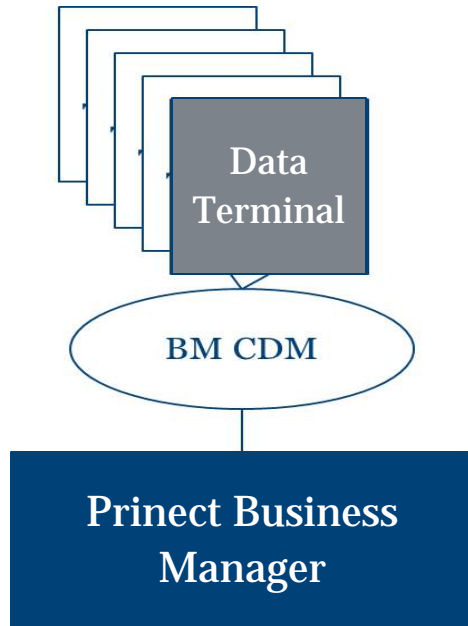


Further extensions / improvements in Prinect Business Manager





Prinect Data Terminal @ PBM “stand-alone”



Job number	Job name	Customer	Due Date	Delivery quantity
252708	Smart Print Shop 2017	CO2	30.06.2017 18:24	5.500
252707	April Sun	HEINEN	01.07.2017 18:00	5.500
252706	_SammeIPROD KW22	GANGING	23.03.2017 18:40	798
252704	Smart Print Shop PRM	CO2	22.03.2017 18:12	500
252703	Smart Print Shop 8	CO2	22.03.2017 18:16	2.000
252702	Shark	CO2	29.03.2017 18:00	1.500

1. Focus

- For customers without Prinect Integration System
- Only unplanned work is possible on job level
- No worksteps are supported
- Supports duration and start/stop mode
- Mixed environment is possible

2. Precondition

Heidelberg BusinessManager Installer

Enables use of Data Terminal also without Prinect production workflow



Heidelberg Business Manager Installer / Maintenance Center

Status

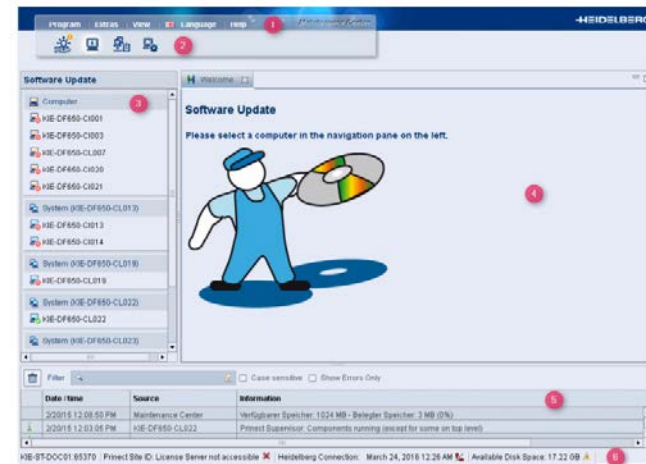
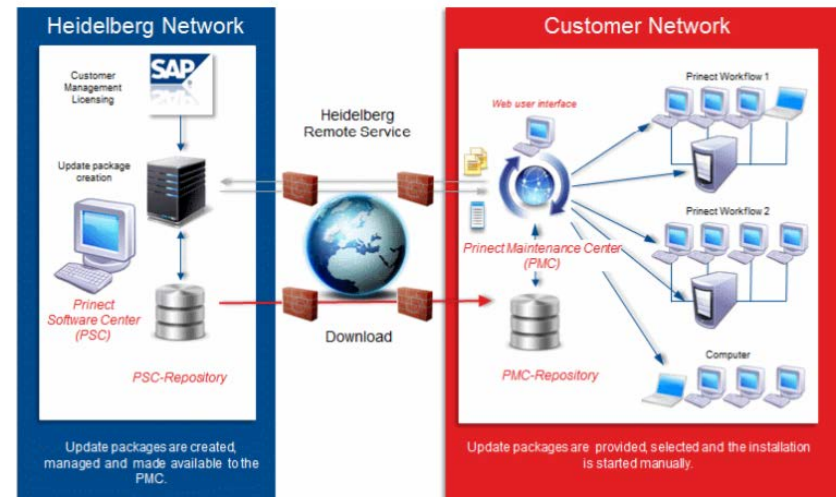
- Rollout started with Prinect 2019 for new PBM customers
- Existing customers will be migrated in a 2nd phase

Benefits

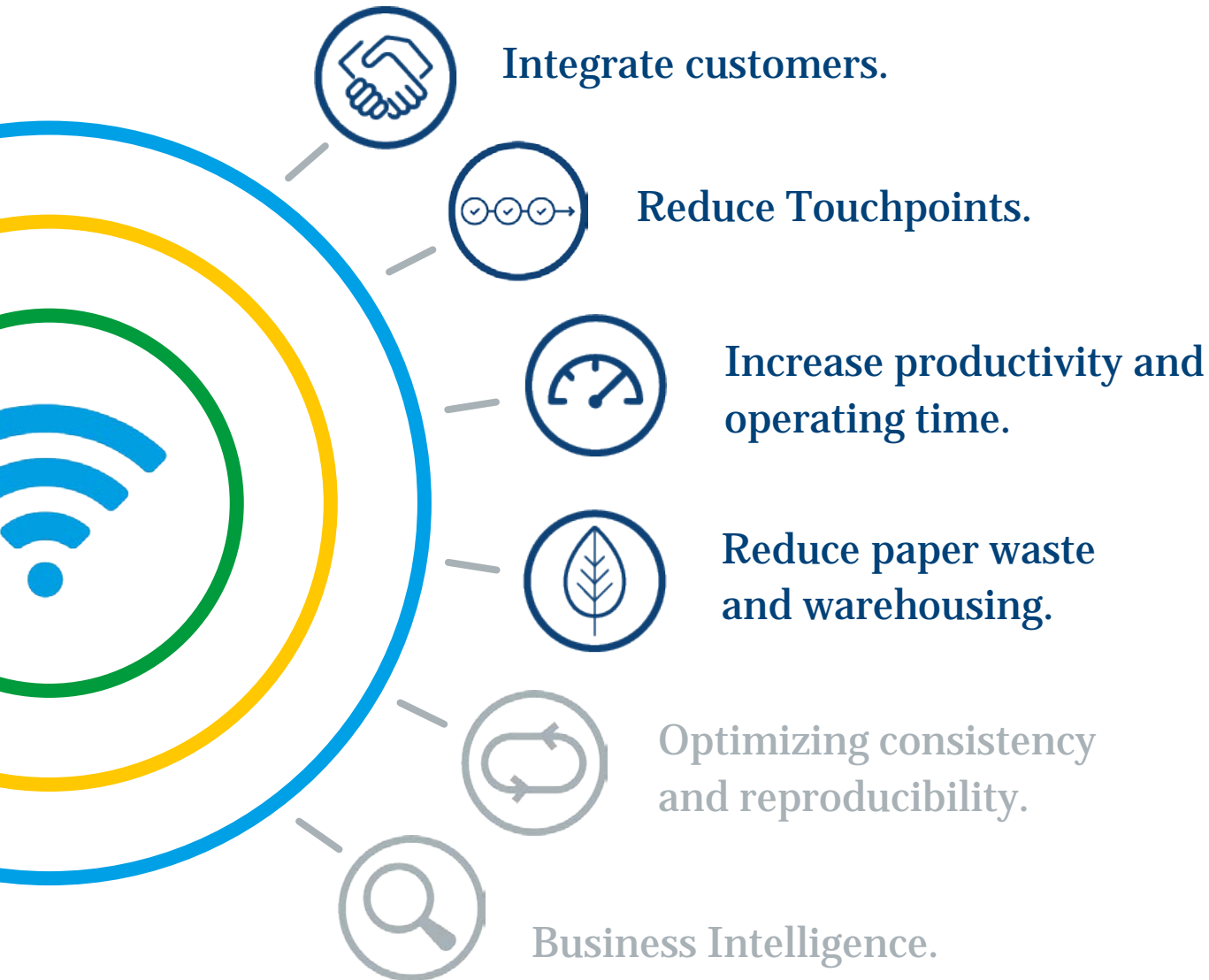
Simplified installation and updates by use of Maintenance Center and Supervisor, Remote update, client update ...

Precondition

Heidelberg CommonDatabase Installer



Web user interface of the Prinect Maintenance Center





Live
demonstration.



Workflow solutions for Business and Production.
Prinect. Driving the Smart Print Shop.



Thank you very much for your attention.
I am happy to answer your questions.