

WS 22

**Signa Station – New features for
imposition and ganging.**





■ ■ ■ S. Roob, F. Skrlac, H. Schieber ■

Signa Station – New features for imposition and ganging.

A new way of printing.

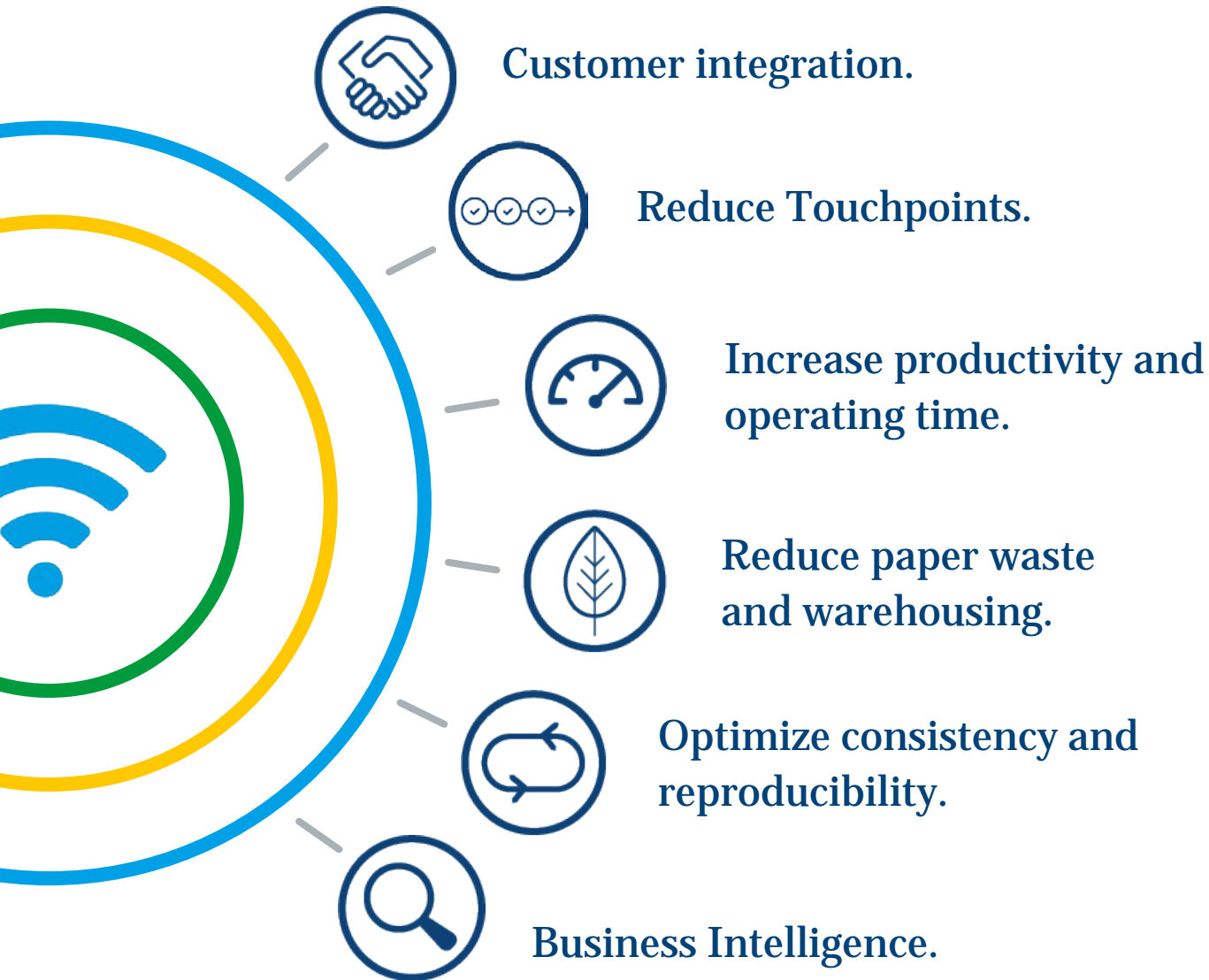
Small quantities produced profitably?

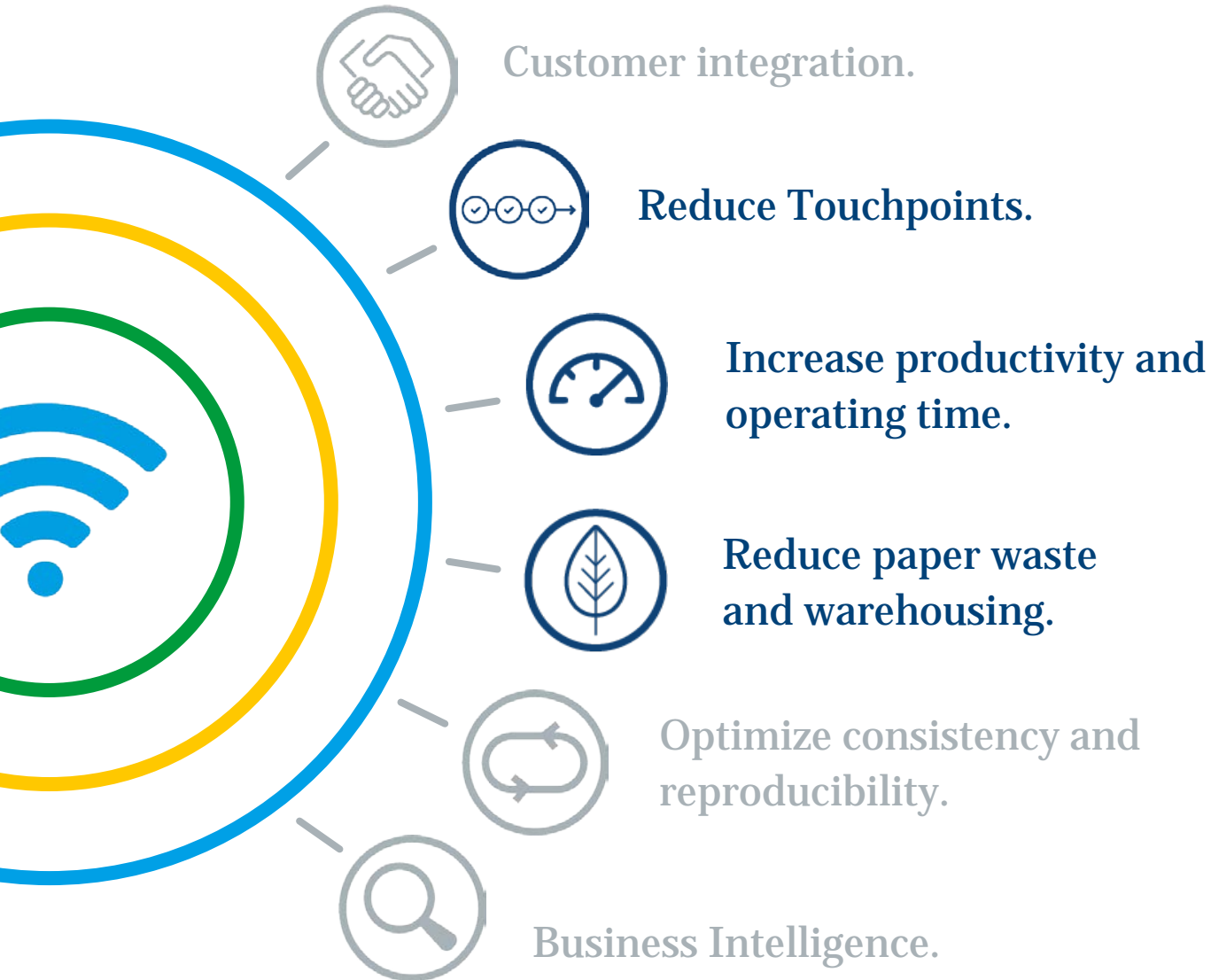
Optimizations for further processing?

What is new in P2019?

WORKSHOP

22

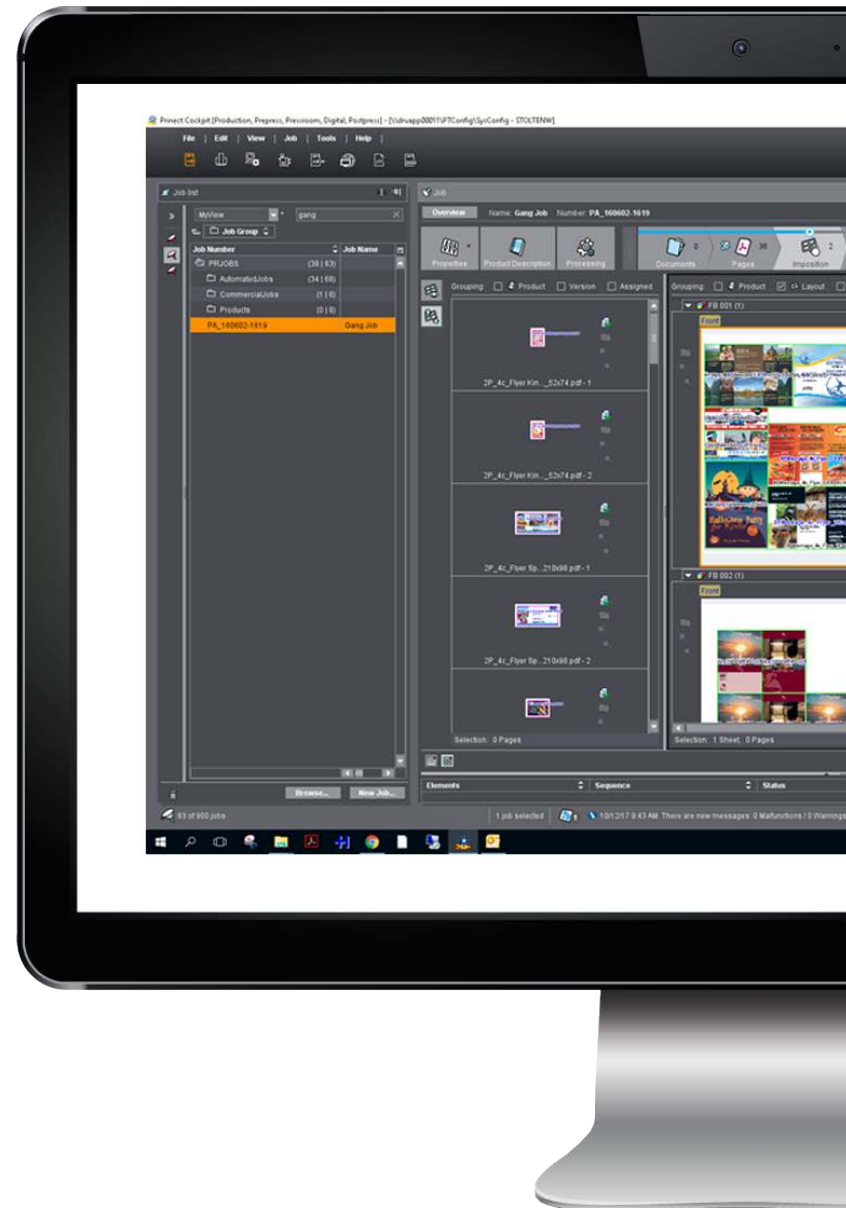






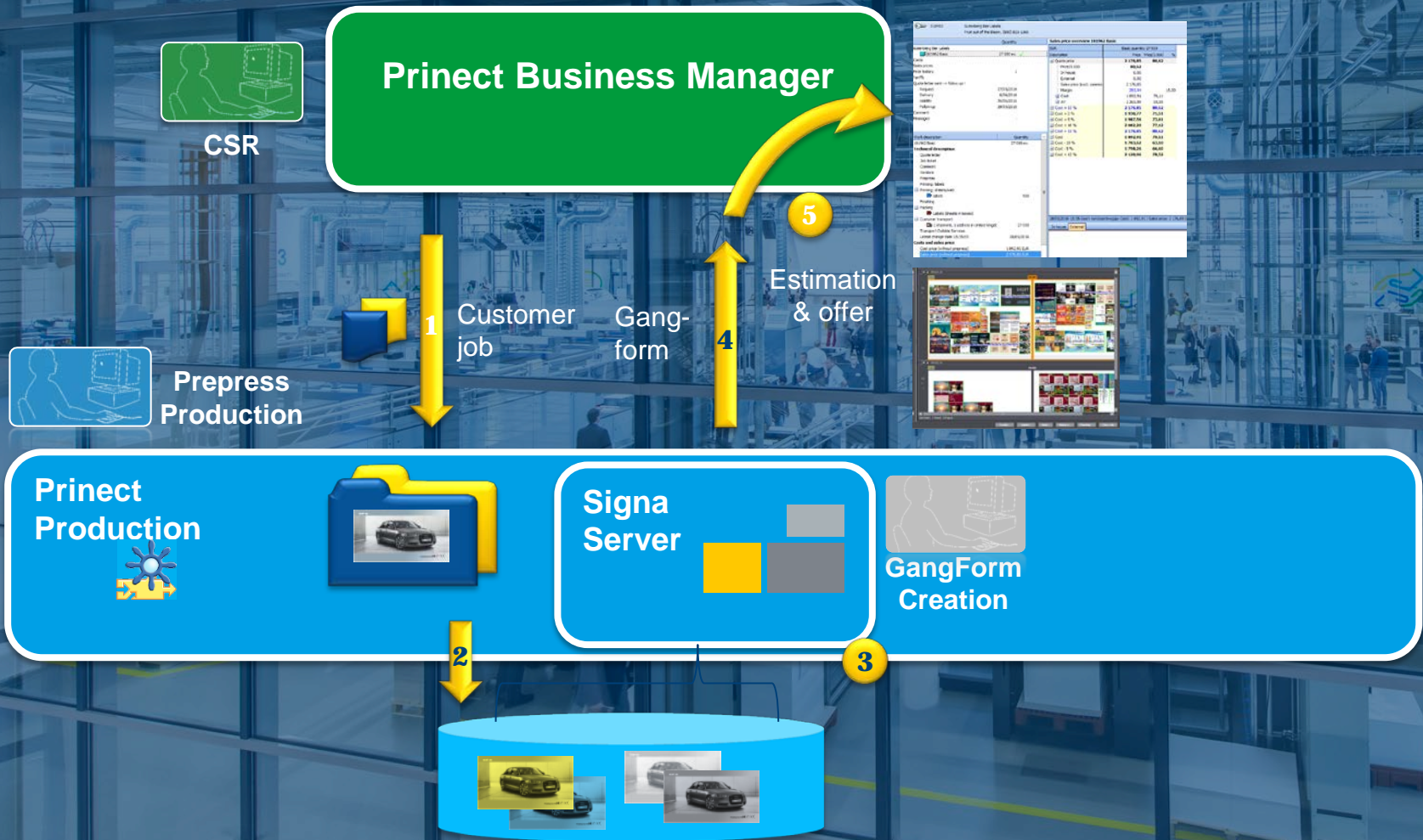
Cost reduction through gang production.

- Automatic positioning - space-saving and with minimal overproduction!
- Distribution on CAD layout or empty sheet
- Great savings – less printing plates and make-ready





Automatic gang form calculation already during estimation



Automatic gang form calculation already during estimation



Order



CSR

Prinect Business Manager

7

Material reservation



Production job with link to gangform



Shopfloor data collection



Prepress Production



Prepress/
Press
Production

Work description	Quantity	FLR	Basic quantity 81 000
Technical data			
Sales orders ganging	81 000 pcs.		
Order confirmation			
300 ticket			
Production monitor			
Version			
Product			
Compositions			
Process			
Printing labels			
Printing sheets/web			
FB 001	1 500		
Finishing			
Packing in boxes			
Packing in boxes			
Packing in boxes			
Packing in boxes			
Packing in boxes			
Labels (sheets in boxes)			
Labels (sheets in boxes)			
Labels (sheets in boxes)			
Check list			
Customer transport			
at your charge	81 000		
Transport Outside Services			
Latest change date	29/05/2016		
Costs and sales price	3 246,20 €		
Calculation (without prepress)			
Sales price calculation (without prepress)	9 234,74 €		

Much higher profit!!!

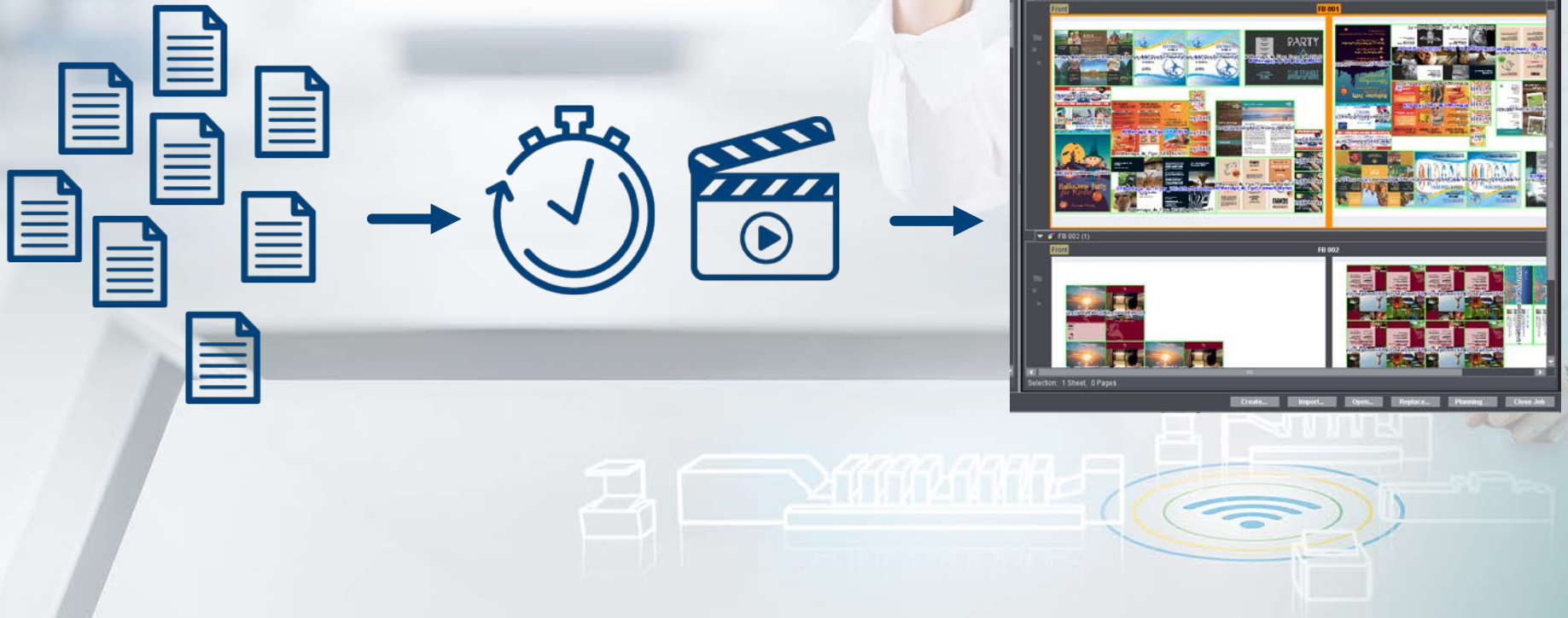
Prinect Production

Production of gangform



Scheduled ganging

- Documents in gangpool
- Automatic gang form creation at defined time
- Automated production





Prinect 2019 Optimizations for gang form calculation

- Tab “Gang-Optimization“
- Control via Product Codes:
 - Optimized Product Code Editor
- Due date
- Status
- Adjustment of filters in Signa and Cockpit

Teilprodukt Marken Platten 1 Verpackung Artikel

XBikes -- Verpackung Teilprodukt XBikes

Teilprodukt aus Vorlage:

Hauptmerkmale

Gruppe: WebToPrint

Name: XBikes

Arbeitsmodus: Ausschießen Automatisch Ausschießen Sammel-Optimierung
 Montage Verpackung

Kommentar:

Individuelle Auftragsdaten im Teilprodukt

Anfangsbedingungen

Erster Druckbogen: 1

Parameter für Weiterverarbeitung

Zuschuss (Sockel): 0 Zuschuss (prozentual): 0,0

Produktcodes

Produktcode Editor

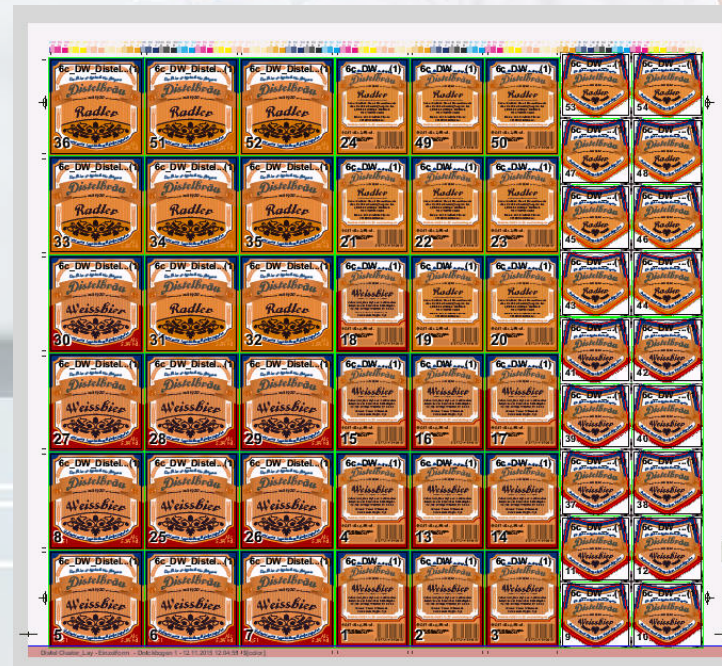


Live
Demonstration.



Gang form calculation on layout

- Predefined positions by die cut tool or cutting programs
- Consideration of e.g. cutting positions at Docucutter





Live
Demonstration.



Prinect 2019 Further news

- Same parameterization for duplicated assembly blocks
- Subject position horizontal centric
- Barcode Editor with specifiable module widths
- Folding sheet signature automatically centered in the spine
- Orientation of folding sheet signature in 90° steps
- Parameterizable margin for color measuring strips
- 3 sizes for text marks:
 - Standard
 - Compact
 - Very compact
- Easy switch between folding sheet and page

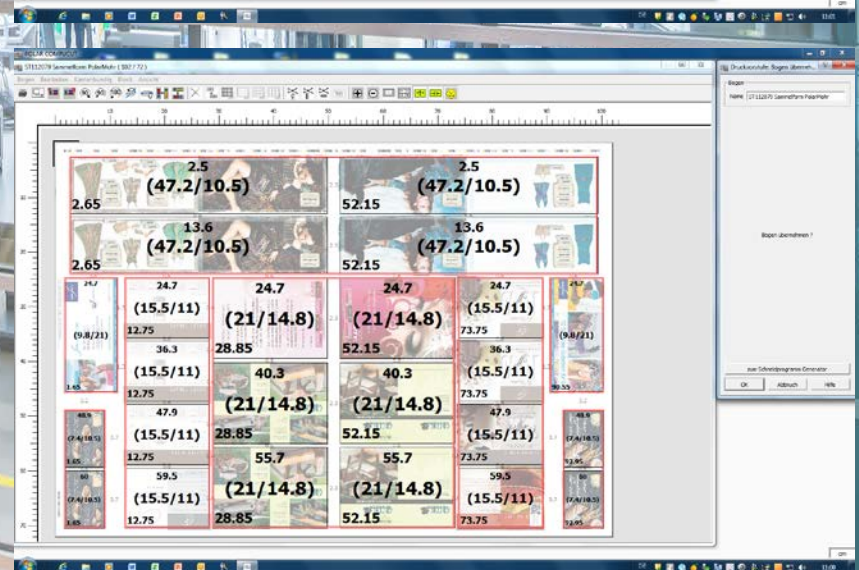
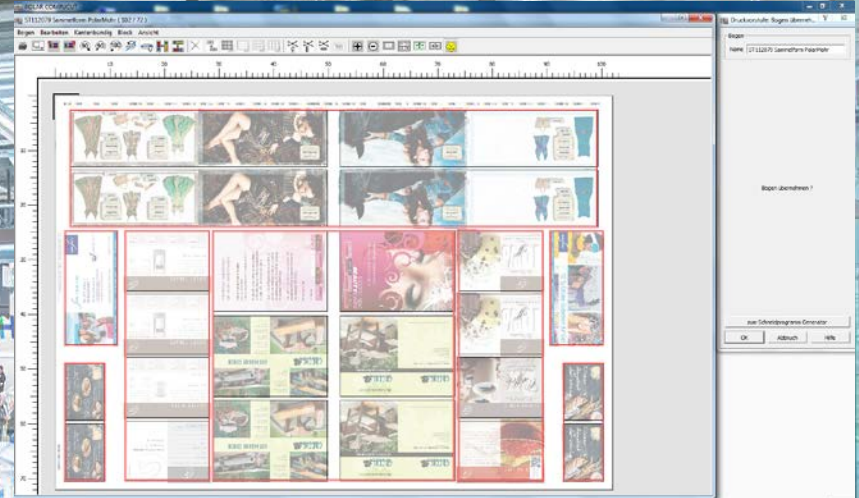
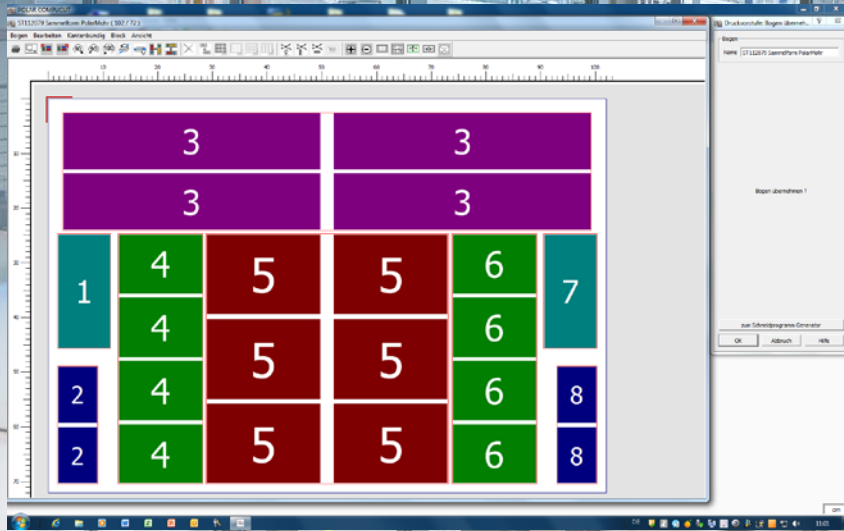


Prinect 2019 New dynamic marks

- New place holder mark for
 - Print date
 - Document creation and modifikation date
 - Amount of jobs per sheet
 - Amount of copies per job on sheet
 - Plate size, surface, etc. for Nela plate logistik systems
 - ID of printing machine (filled by Cockpit)
- Enables dynamic marks for gang forms; e.g.:
`$(Sheetregionno)$(customername)$(jobname)_$(jobid)_$(LastFoldingSheetMarker)`



New in Prinect 2018 cutting preset with preview



Up-to-now placeholders only



Workflow solutions for Business and Production.
Prinect. Driving the Smart Print Shop.



Thank you very much for your attention.
We are happy to answer your questions.