



LET'S
CONNECT

INTERNATIONAL
PRINECT USER DAYS



Digital scheduling without MIS connection: Prinect Scheduler provides nice advantages.



Agenda

1. Target goal and pre-requisites.
2. Job preparation and scheduling.
3. Make ready optimization.
4. Warnings and alarms.
5. Special views and functions.



Prinect Production Manager is implemented.
What's next?

Presetting?

MIS integration?

Collaboration with
customers?

Prinect Scheduler – Step towards Smart Print Shop

Bindery integration?

Shop floor data collection?



How is scheduling done in your print shop today?

- Daily or weekly?
- 1x, 2x, 3x daily or as needed?
- Which tools are used (Excel, others)?
- At which stage of the job process do you schedule?
- Is there a rough and a fine planning?
- Manual time scheduling, forward or backward planning?
- How does the planning of periodic jobs and maintenance work?
- How is the schedule announced to the employee?
- Who is responsible for the production right in time (Calculation, sales, production manager, planner...)?
- How many people are involved in time scheduling?
- What should be planned?



**Prinect Production Manager with
integrated Prinect Scheduler
opens up many possibilities
and provides nice advantages.**



Scheduling without MIS integration. What could it provide for your print shop?



- Scheduled operations directly available for the press operator (presses connected online or with Data Terminal).
- Always up-to-date information from connected devices.
- Capacity overview in Prinect Scheduler and/or Prinect Portal.
- More job information at the press
 - Quantities
 - Calculated production times
- Better overview and organisation of materials
 - Paper
 - Spot colors
 - Plates

Only a view clicks more in prepress.



Planning Assistant

Print

Modify or extend operations for the press sheets. You can change machines, variants, startup waste and the setup and production times for the operations.

Product — Delivery — **Print** — Printing Material — Platemaking

Operation	Sheet	Production	Versions	Planned Am...	Planned Wa...	Colors	Front Colors	Back Colors	Work Style	Sequence
01_FB 001 4(5)4(5)	FB 001	execute		5000	105	CMYK / CMYK	CMYK	CMYK	Perfecting	XL106-B-P-SIM1
01_FB 002 4(5)4(5)	FB 002	execute		20000	270	CMYK / CMYK	CMYK	CMYK	Perfecting	XL106-B-P-SIM1
01_FB 003 4(5)4(5)	FB 003	execute		20000	270	CMYK / CMYK	CMYK	CMYK	Perfecting	XL106-B-P-SIM1
01_FB 004 4(5)4(5)	FB 004	execute		20000	270	CMYK / CMYK	CMYK	CMYK	Perfecting	XL106-B-P-SIM1

Merge Quantities Split Quantities... Merge Separations Split Separations...

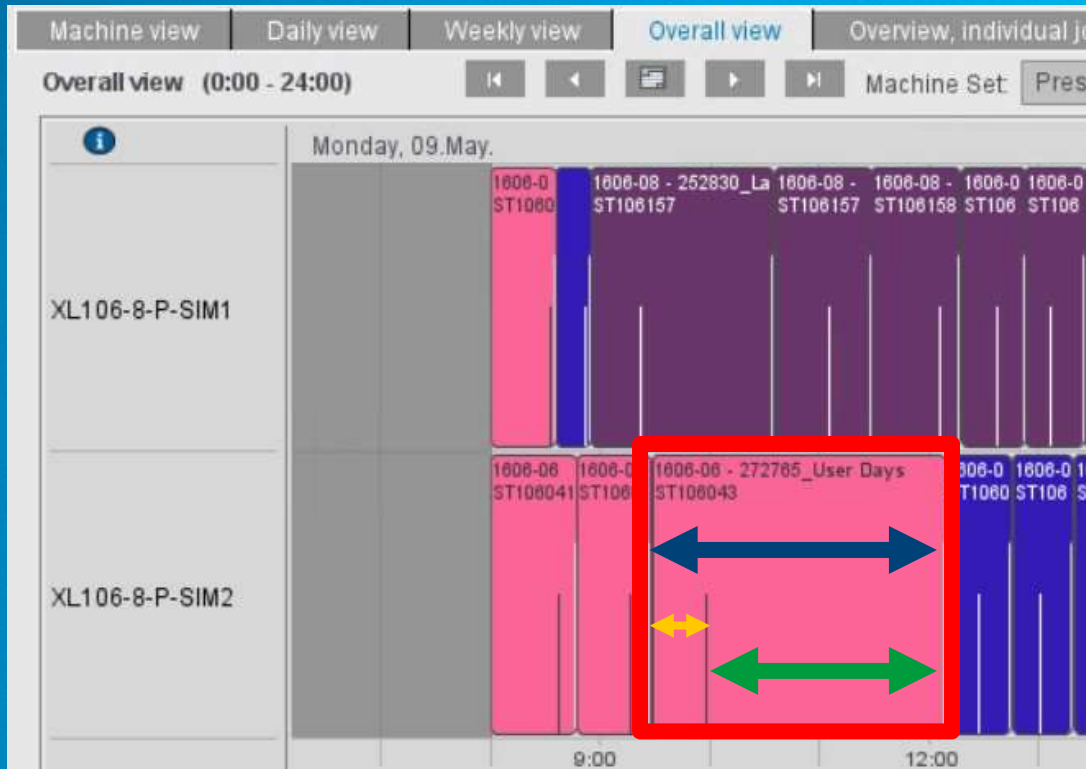
Quantity: 5000 Machine: Sequence: XL106-B-P-SIM1 Duration: Setup time: 00:10:00 hh:mm:ss
Waste: 105 Machine: XL106-B-P-SIM1 (4257) Production time: 00:19:21 hh:mm:ss
Duration: 00:29:21 hh:mm:ss

Finish Cancel < Back Next >

Optimal job preparation

Planning Assistant guides through the planning process to keep the entire production process as smooth as possible.

Performance data configuration



- Basic make ready time
- Average speed
- Max. speed
- Waste sheets per operation (fix)
- Variable waste sheets per operation

Performance Parameters	
Fixed basic time for setup per operation	10 Minutes
Average Production Speed	15.500 units/h
Maximum Production Speed	18.000 units/h
Fixed waste per operation	50 Copies
Variable waste per operation	1.1 % of the target quantity

Provides automatic calculation of

- Total duration**
- Make ready time**
- Production time**



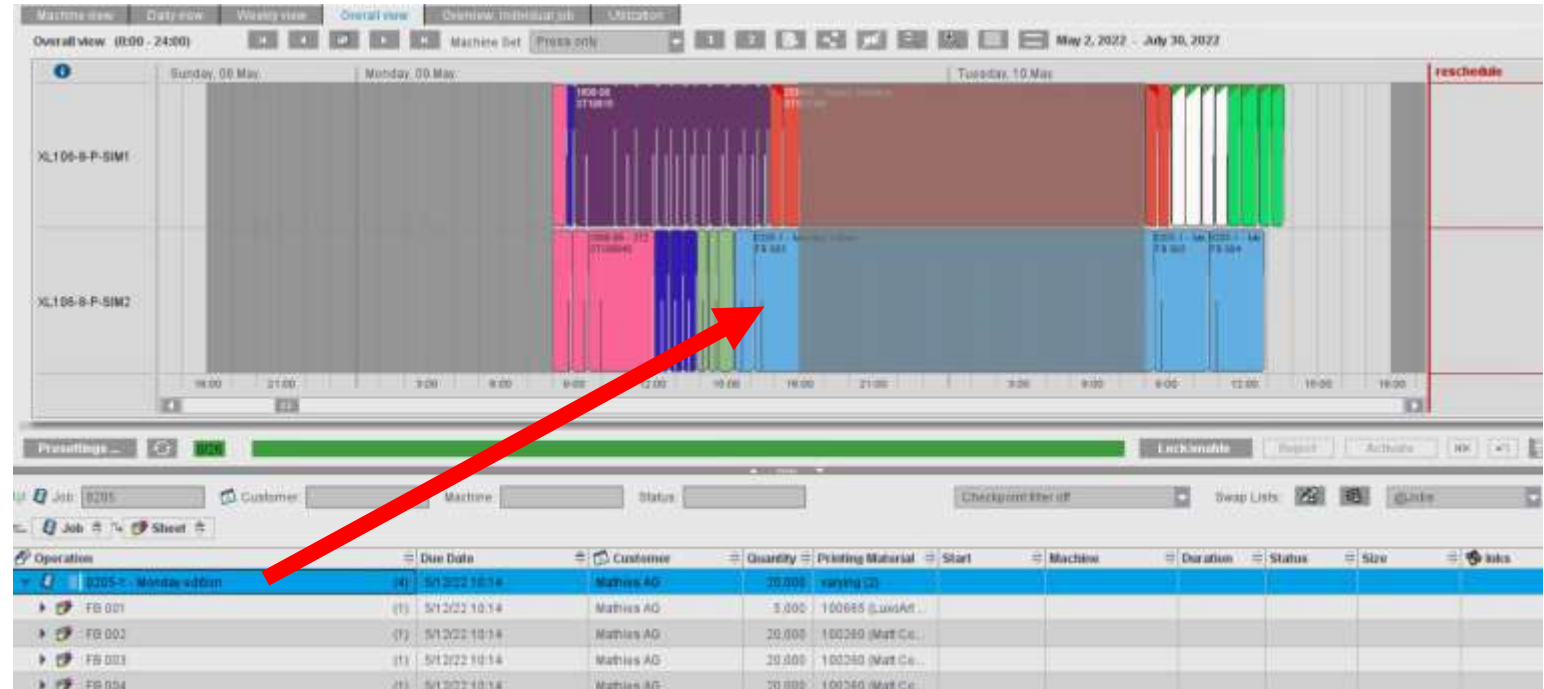
Scheduling.

Schedule by Drag & Drop

Select job in the job list and place it by Drag & Drop at the desired time in the planning board.

Forward Scheduling

Select job in the job list and use "forward scheduling" in the menu. System will automatically schedule the job to earliest possible starting date and earliest finishing date.



Make ready optimization.



Princt Cockpit [Production, Prepress, Pressroom, Digital, Postpress] - [\\DRUAPP00011\PTConfig\SysConfig - SEETHALE]

File | Edit | View | Tools | Help

Machine view | Daily view | Weekly view | **Overall view** | Overview, individual job | Utilization | Employee Schedule

Overall view (0:00 - 24:00) Machine Set: Commercial 1 2 May 12, 2021 - August 9, 2021

Monday, 17.May Tuesday, 18.May reschedule

XL106-8-P-SIM1
XL106-8-P-SIM2
POLAR-1
STAHL-KH82
ST500[4.0]

Optimize Print Order

XL106-8-P-SIM1

Start Date for Optimization: 08:00 Mon, 17.May.21 Optimization Period (h): 24 Match Postpress Operations to Press

Optimization Rule: *Paper and folding scheme: Folding Schemes1, Sheet width

Run Optimization

Job	Sheet	Machine	Folding Schemes	Sheet width
253443 - Ferry goes to holiday	ST107443 (4/4)	XL106-8-P-SIM1		920
253443 - Ferry goes to holiday	ST107444 (4/4)	XL106-8-P-SIM1	F16-7	880
253443 - Ferry goes to holiday	ST107445 (4/4)	XL106-8-P-SIM1	F16-7	880
253443 - Ferry goes to holiday	ST107446 (4/4)	XL106-8-P-SIM1	F16-7	880
253444 - Workshop dairy	ST107447 (4/4)	XL106-8-P-SIM1		920
253444 - Workshop dairy	ST107448 (4/4)	XL106-8-P-SIM1	F16-7	880
253444 - Workshop dairy	ST107449 (4/4)	XL106-8-P-SIM1	F16-7	880
253444 - Workshop dairy	ST107450 (4/4)	XL106-8-P-SIM1	F16-7	880
253445 - Wine catalogue	ST107451 (4/4)	XL106-8-P-SIM1		920
253445 - Wine catalogue	ST107452 (4/4)	XL106-8-P-SIM1	F16-7	880
253445 - Wine catalogue	ST107453 (4/4)	XL106-8-P-SIM1	F16-7	880
253445 - Wine catalogue	ST107454 (4/4)	XL106-8-P-SIM1	F16-7	880
1606-07 - 252786 Princt Anwendertage	ST106044 (4/4)	XL106-8-P-SIM1	F4-1	920

Apply Cancel

Presettings ... 0/22

Operation

- 1606-01 - Milk Mini Ce
- 1606-02 - Milk Mini Ce
- 1606-03 - Zitrovital Red (1) 12/31/21 11:40 32,000 111260N2HA (E...
- 1606-04 - Zitrovital Yellow (1) 12/31/21 11:40 0 111260N2HA (E...
- 1606-05 - Zitrovital Magenta (1) 12/31/21 11:40 0 42339D1HA_01 (...)
- 1606-06 - 272765 User Days (11) 12/31/21 11:40 Customer Commercia... 2,500 100277 (c)

Checkpoint filter off Swap Lists: @Jobs

Size Inks Paper Spot Plates Setup information

12

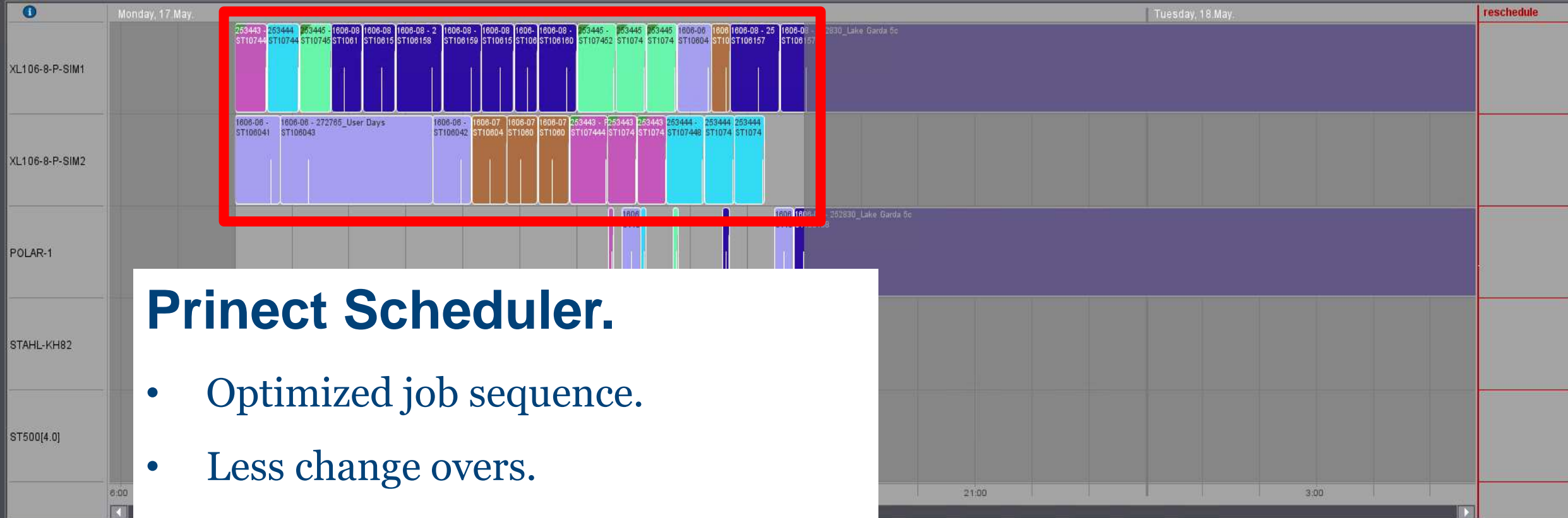
File | Edit | View | Tools | Help

Machine view | Daily view | Weekly view | **Overall view** | Overview, individual job | Utilization | Employee Schedule

Overall view (0:00 - 24:00)

Machine Set: Commercial

May 12, 2021 - August 9, 2021



Prinect Scheduler.

- Optimized job sequence.
- Less change overs.
- Fast make ready times.

Job	Sheet	Job:	Customer:	Machine:	Status:	Checkpoint filter off	Swap Lists:	@Jobs						
Operation	Due Date	Customer	Quantity	Printing Material	Start	Machine	Duration	Status	Size	Inks	Paper	Spot	Plates	Setup information
▶ 1606-01 - Milk_Mini_Ceris_1	(1) 12/31/21 11:40		60,000	42339D1HA (TE...										
▶ 1606-02 - Milk Mini Ceris-02	(1) 12/31/21 11:40		160,000	42339D1HA_01 (...)										
▶ 1606-03 - Zitrovital Red	(1) 12/31/21 11:40		32,000	111250N2HA (E...										
▶ 1606-04 - Zitrovital Yellow	(1) 12/31/21 11:40		0	111250N2HA (E...										
▶ 1606-05 - Zitrovital Magenta	(1) 12/31/21 11:40		0	42339D1HA_01 (...)										
▶ 1606-06 - 272765 User Days	(11) 12/31/21 11:40	Customer Commercia...	2,500	100277 (-)										



Warnings and alarms.

Prinect Scheduler identifies conflicts before they harm your business.

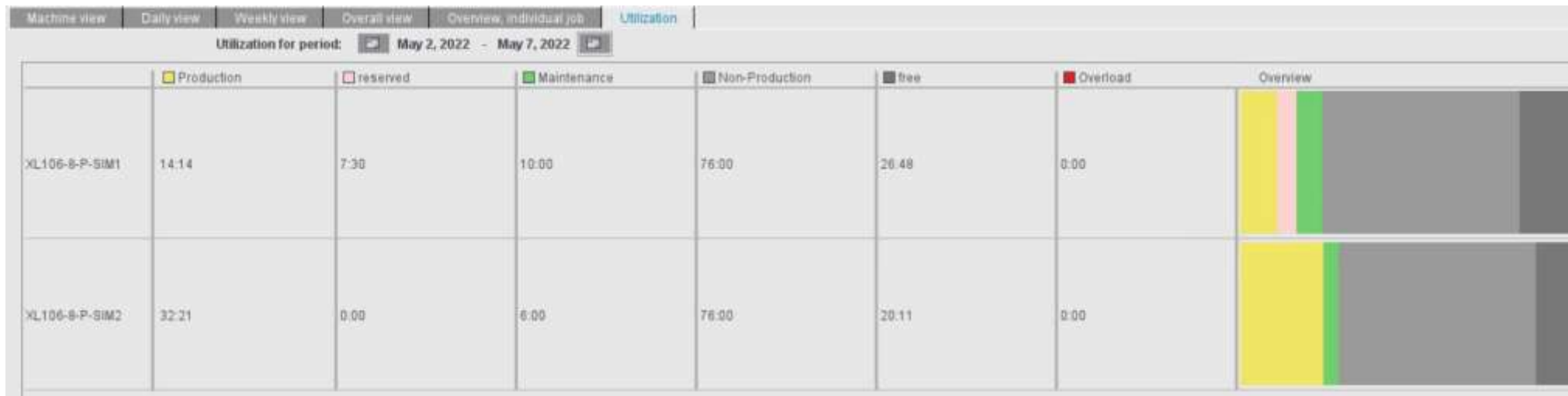
- Delivery date / time is exceeded
- Process steps are partly or completely outside of a shift
- Once postpress planning gets included: Overlapping processes (start of a process step is earlier than the scheduled end of the predecessor process)
- Checkpoints are not fulfilled in time (i.e. paper or plates are missing)

Job	Sheet	Start	Machine	Quantity	Inks	Spot	Plates	Paper	Printing Material
1606-09 - 252831_Flyer Hotel Mimir 5c	ST106161	5/9/22 08:27	XL106-8-P-SIM2	450	0/5(CMYK, PANTONE 814 PC)	5/8/22 10:27	5/8/22 16:57	5/7/22 16:27	100274 (Lumiart)
1606-09 - 252831_Flyer Hotel Mimir 5c	ST106161	5/9/22 08:00	XL106-8-P-SIM2	450	1/0(PANTONE 814 PC)	5/8/22 10:00	5/8/22 16:30	5/7/22 16:00	100274 (Lumiart)
1606-08 - 252830_Lake Garda 5c	ST106160	5/9/22 14:21	XL106-8-P-SIM1	2,500	0/5(CMYK, PANTONE 117 CP)	5/8/22 16:21	5/9/22 12:51	●	100261 (Luxo matt)
1606-08 - 252830_Lake Garda 5c	ST106159	5/9/22 11:59	XL106-8-P-SIM1	2,566	1/0(PANTONE 117 CP)	5/8/22 13:59	5/9/22 10:29	●	100261 (Luxo matt)
1606-08 - 252830_Lake Garda 5c	ST106157	5/10/22 10:33	XL106-8-P-SIM1	2,566	5/0(CMYK, PANTONE 299 CP)	5/9/22 12:33	5/10/22 09:03	5/9/22 08:33	100261 (Primago gloss)
1606-08 - 252830_Lake Garda 5c	ST106160	5/9/22 14:56	XL106-8-P-SIM1	2,566	1/0(PANTONE 117 CP)	5/8/22 16:56	5/9/22 13:26	●	100261 (Luxo matt)
1606-08 - 252830_Lake Garda 5c	ST106158	5/10/22 12:54	XL106-8-P-SIM2	2,500	0/5(CMYK, PANTONE 117 CP)	5/9/22 14:54	5/10/22 11:24	●	100261 (Luxo matt)
1606-08 - 252830_Lake Garda 5c	ST106158	5/9/22 11:26	XL106-8-P-SIM1	2,566	1/0(PANTONE 117 CP)	5/8/22 13:26	5/9/22 09:56	●	100261 (Luxo matt)
1606-08 - 252830_Lake Garda 5c	ST106157	5/10/22 12:13	XL106-8-P-SIM1	2,566	0/5(CMYK, PANTONE 299 CP)	5/9/22 14:13	5/10/22 10:43	5/9/22 10:13	100261 (Primago gloss)
1606-05 - Zitrovital Magenta	FB 001	5/13/22 16:09	XL106-8-P-SIM2	8,243	5+1/0(CMYK, PANTONE 7686 ...)	5/13/22 08:09	5/13/22 14:39	5/12/22 14:09	42339D1HA_01 (TEKSE)
1606-04 - Zitrovital Yellow	FB 001	5/13/22 15:32	XL106-8-P-SIM2	3,031	5+1/0(CMYK, PANTONE 7686 ...)	5/12/22 17:32	5/13/22 14:02	5/12/22 13:32	111250N2HA (EENZIJD)



Special views and functions.

- Scheduler provides a variety of standard views and lists.
 - Machine view
 - Daily and weekly view
 - Overall view and Utilization
- The views and lists can be customized to the needs of the operator to keep the important information in focus.
- All information represent the current state of the production; they always kept up-to-date by Prinect Scheduler and the connected machinery and Data Terminals.



Prinect Portal.

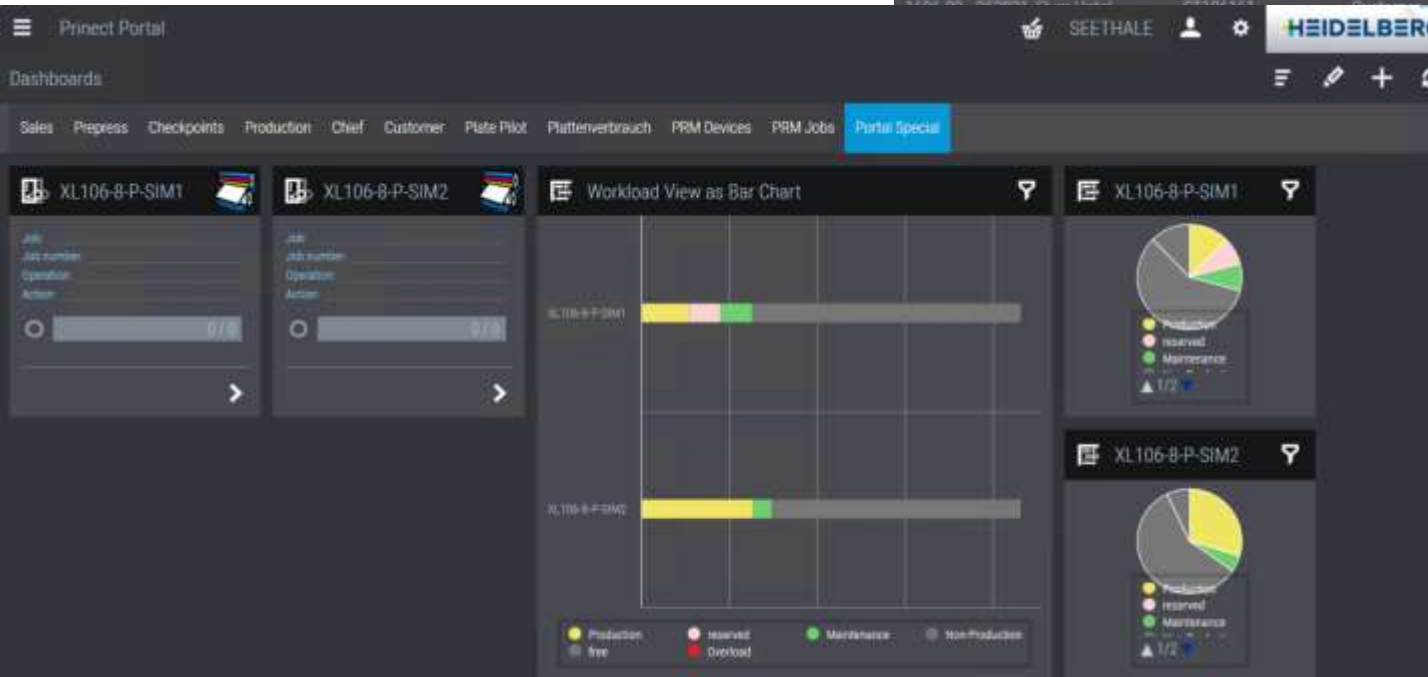


The Web-UI access with special functions for helpers and sales reps:

Checkpoint view →

Spotcolors

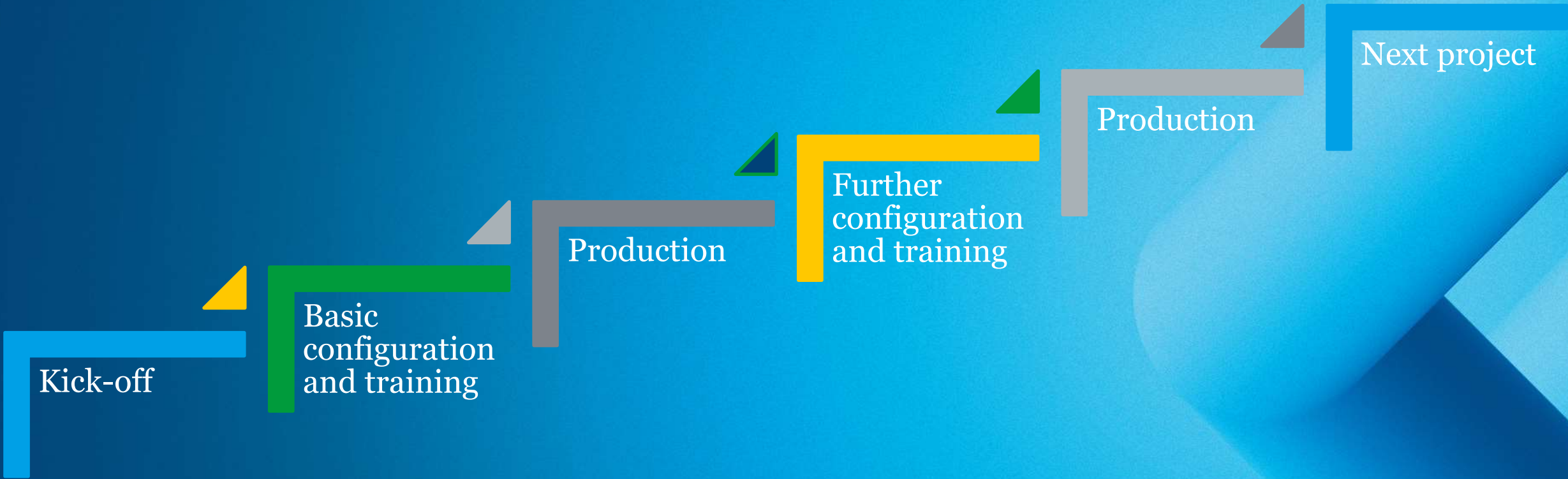
Job	Sheet	Customer	Start	Machine	Quantity	Link	Spot	Paper	Paper Type (ISO)	
1606-09 - 252831_Flyer Hotel Mimir 5c	ST106161 (ST106161)	Customer Commercial 2	5/9/22, 8:00 AM	XL106-8-P-SIM2	450	1/0 (PANTONE 814 PC)	<input type="checkbox"/>	<input type="checkbox"/>	1 (glossy coated)	i
			5/9/22, 8:27 AM	XL106-8-P-SIM2	450	0/5 (CMYK, PANTONE 814 PC)	<input type="checkbox"/>	<input type="checkbox"/>	1 (glossy coated)	i
			5/9/22, 11:26 AM	XL106-8-P-SIM1	2,566	1/0 (PANTONE 117 CP)	<input type="checkbox"/>	<input checked="" type="checkbox"/>	2 (matt coated)	i
			5/9/22, 11:59 AM	XL106-8-P-SIM1	2,566	1/0 (PANTONE 117 CP)	<input type="checkbox"/>	<input checked="" type="checkbox"/>	2 (matt coated)	i
			5/9/22, 2:21 PM	XL106-8-P-SIM1	0	0/5 (CMYK, PANTONE 117 CP)	<input type="checkbox"/>	<input checked="" type="checkbox"/>	2 (matt coated)	i



← Capacity and status views



Prinect Scheduler – step by step implementation.





Thank you for your attention!