



INTERNATIONAL
PRINECT USER DAYS

8th and 9th October 2014

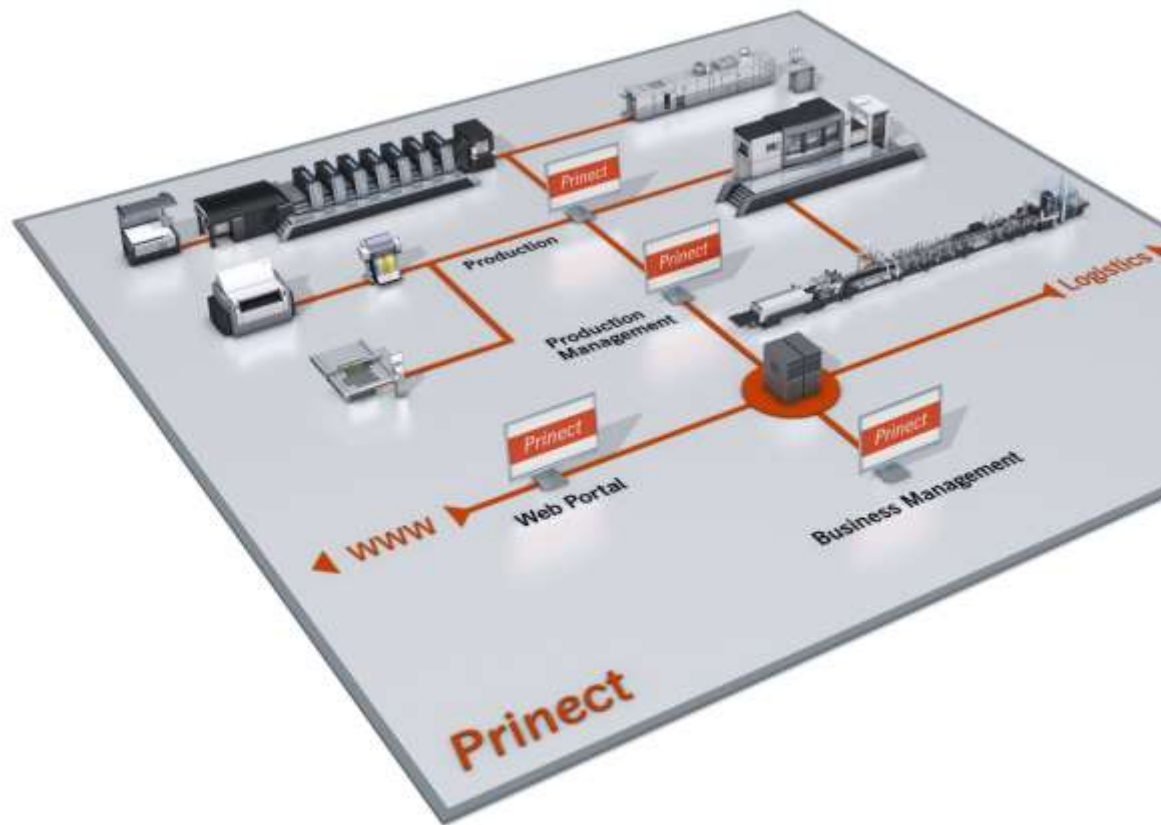
5. International Prinect User Days, October 8th and 9th, 2014

Folding carton and label production with Prinect

Sabine Roob

HEIDELBERG

Prinect Solution for Folding Boxes & Label Production Production in Offset – from Design to Finishing!



MIS / ERP Integration

Structural and Graphics Design

Prepress Workflow

Print Integration

Color and Quality Management

Finishing Integration

Agenda

1. Label production

- General overview
- New features of Prinect 2015
- Demo

2. Folding box production

- General overview
- New features of Prinect 2015
- Demo

Label production with Prinect

- Order via web shop, order lists etc.
- One-up preparation with Prepress Manager and PDF Toolbox
- Sheet preparation with Signa Station based on die cut tool layout or with step & repeat
- Gang form calculation with MSO based on cost parameters



New Features for Label Production

Prinect Package Designer

Library for Labels

- Label library with standard shapes like rectangles with round edges, ovals, circles etc.
- New shapes can be imported and stored in the library

New Features for Label Production Automation of order creation

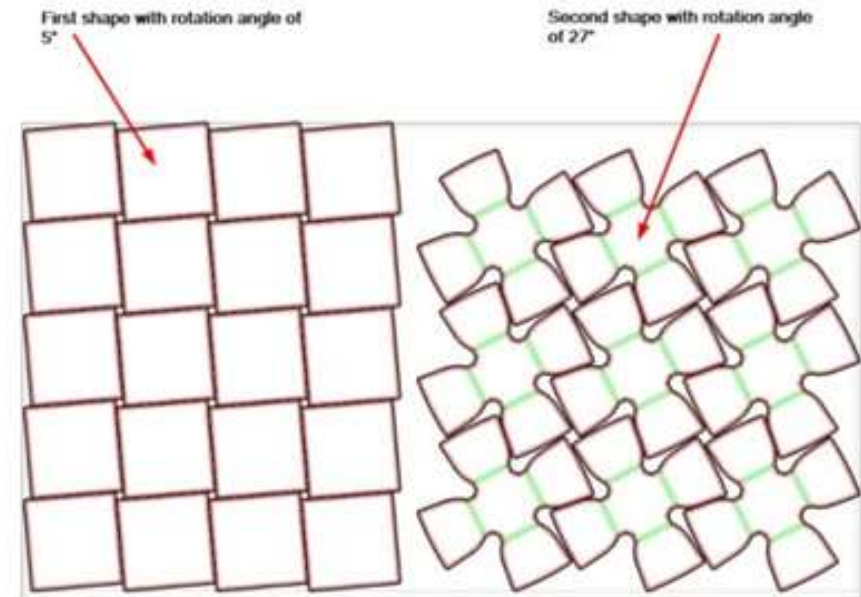
- Easy creation of order lists in e.g. Excel with
 - Article name and shape
 - Amount
 - Product type
 - Product code
 - ...
- Order info in csv-file can automatically create different gang jobs in cockpit
- Complete workflow automation is possible with Smartautomation

➤ **Enormous time saving during job set up!**

New Features for Label Production

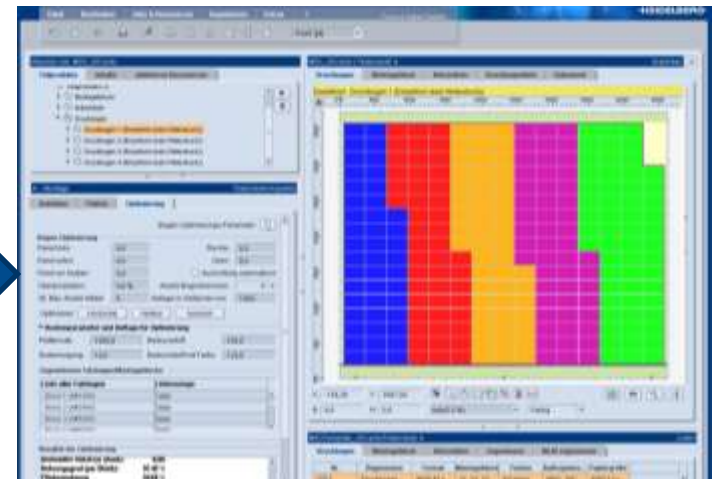
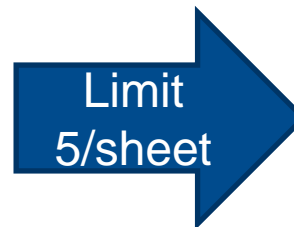
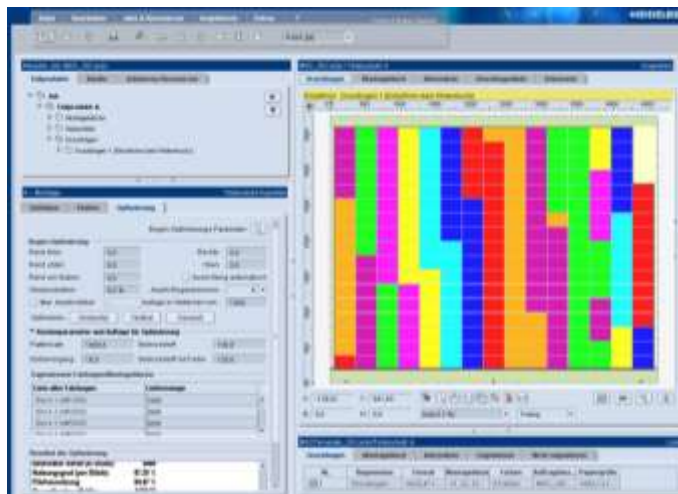
Optimized Layout Creation

- Different rotation angles for various shapes
 - Best usage of sheet
 - Better pressure distribution for rotative die cutting



New Features for Label Production Optimizations in Sheet Optimizer

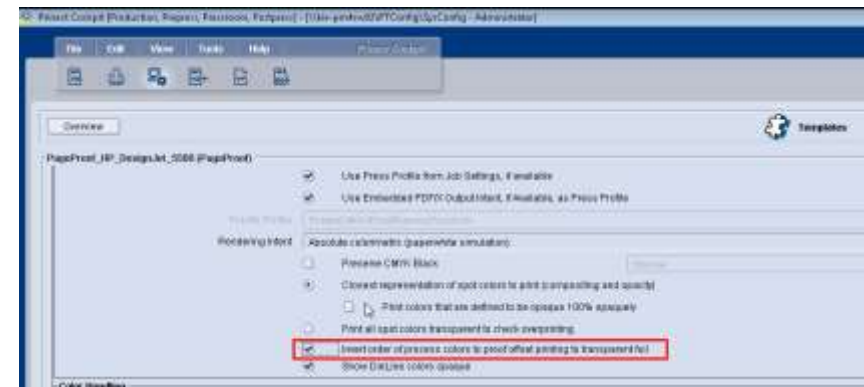
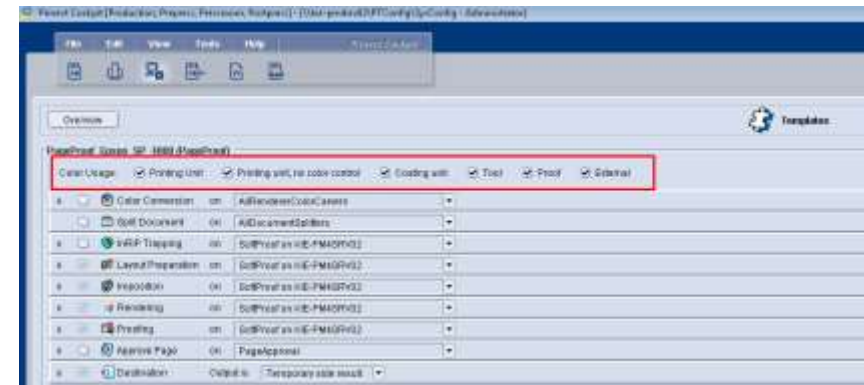
- Better distribution on sheet
- Limitation of articles per sheet
- Warning when the delivery quantity from the PDF name is misinterpreted
- Optimization results are displayed in own browser
 - Can be saved or printed out
- New (corrected) quantities from Signa are transferred to Cockpit



New Features for Label Production

Improved Proofing & Output

- Page Proofing
 - Invert color sequence in PageProof e.g. for transparent foils
- Output
 - Dedicated calibration curve can be assigned to individual colors

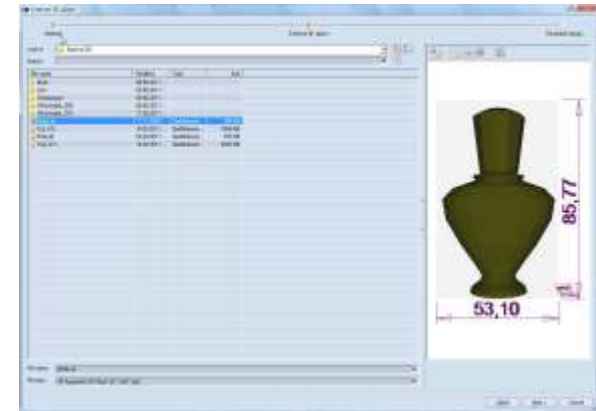


Demo

New Features for Folding Box Production Package Designer 3D (1)

3D for secondary boxes / Boxes for external objects

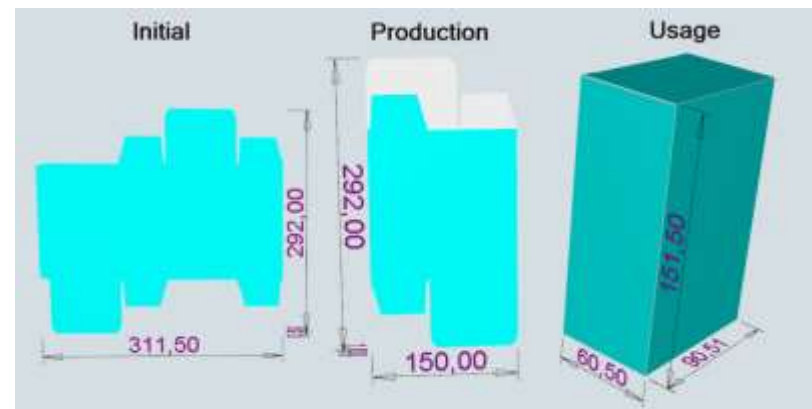
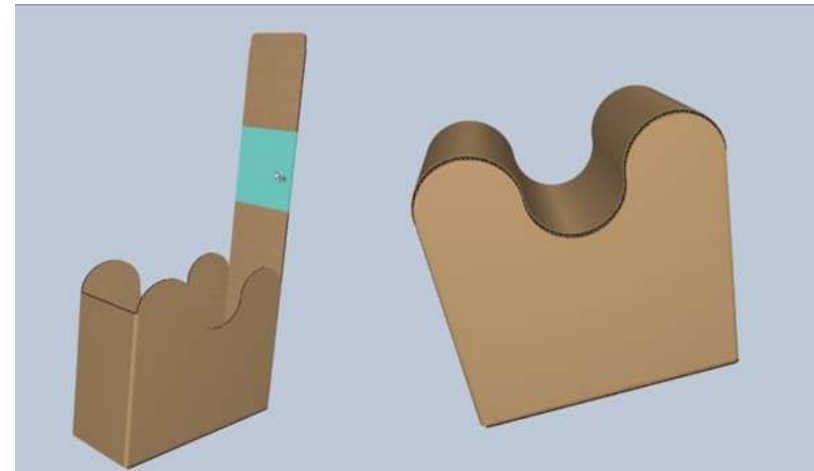
- Design “around product”
 - Import of industrial CAD-formats
 - Export of created packages in industrial CAD-formats to create a secondary box or tray around



New Features for Folding Box Production Package Designer 3D (2)

3D for curved objects

- Panel separator for curved shapes
- Dimensions in 3D view
 - Simplifies customer approval process
 - Facilitates work of graphic designer



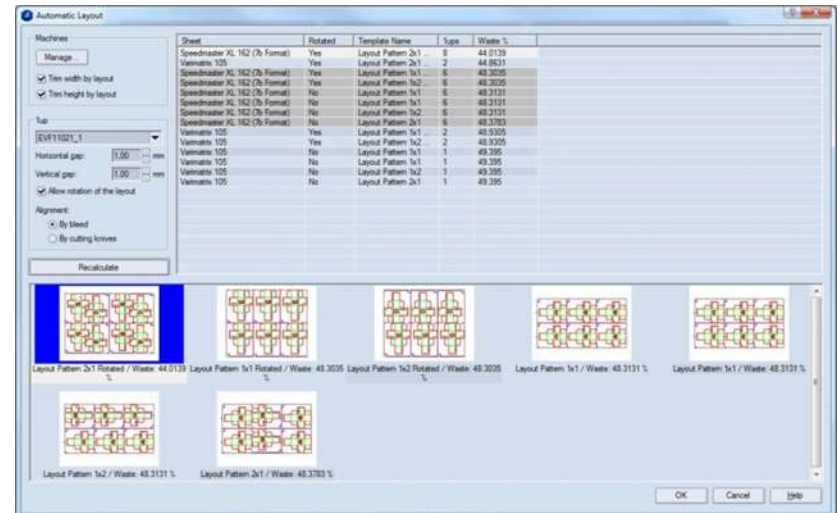
New Features for Folding Box Production Package Designer Layout

Automatic layout creation

- Entering required press or substrate format and knife gaps
- Automatic calculation and display of various layout options

Free rotation

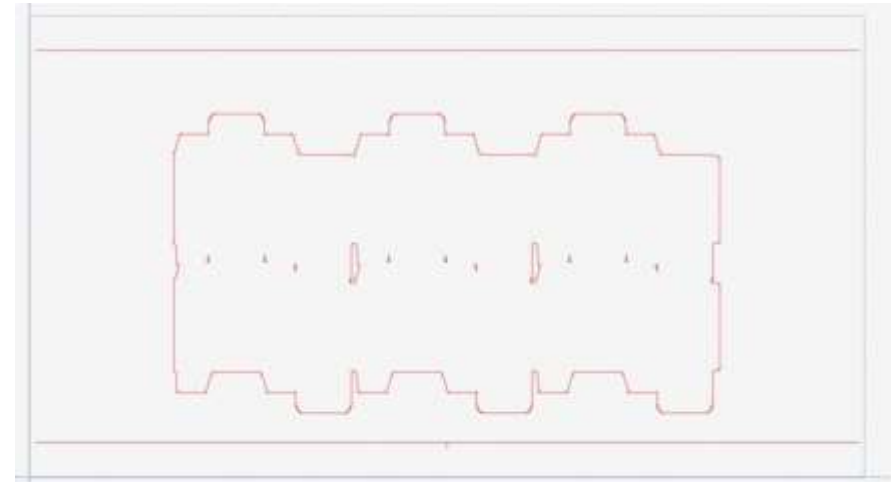
- Different angles for each shape (like in Signa Station Packaging Pro)



New Features for Folding Box Production Package Designer

Fast Production of varnishing blankets

- Varnishing areas are bordered by lines and assigned to a varnishing layer
- Prinect Package Designer generates varnishing blanket on the basis of this layer



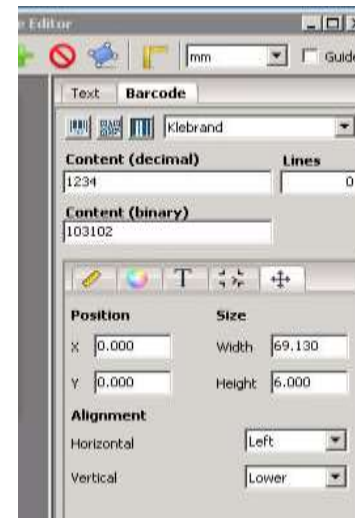
New plotters

- Support for Kongsberg Plotter

New Features for Folding Box Production

PDF Toolbox - Barcode Editor

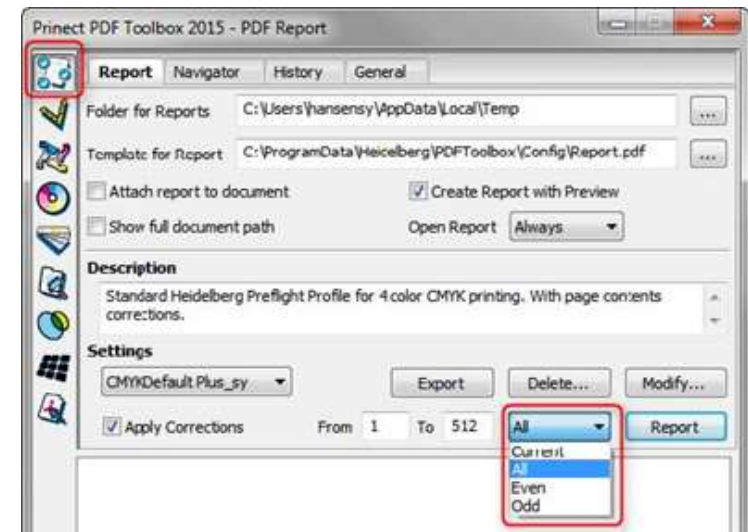
- „EMS code“ (= „Pharma Wide“)
- Triangle symbol as limitation for binary barcodes
- New tab for geometric positions
 - Width and height
 - Horizontal (left, center, right) and vertical (below, center, top) orientation
- Text mark support
 - Positioning and viewing of simple text marks



New Features for Folding Box Production

PDF Toolbox - Preflighter/ PDF-Report

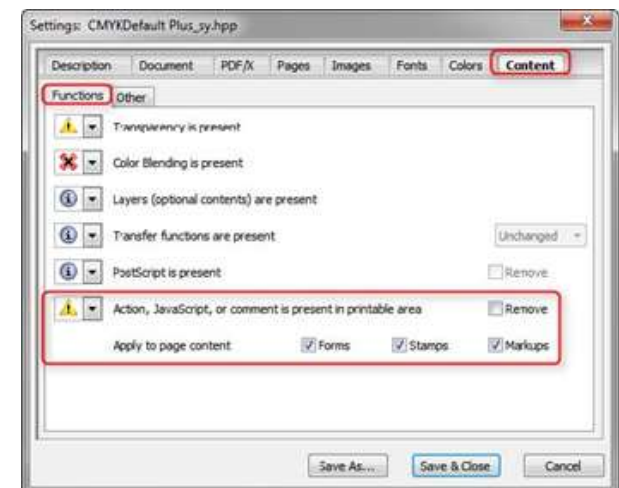
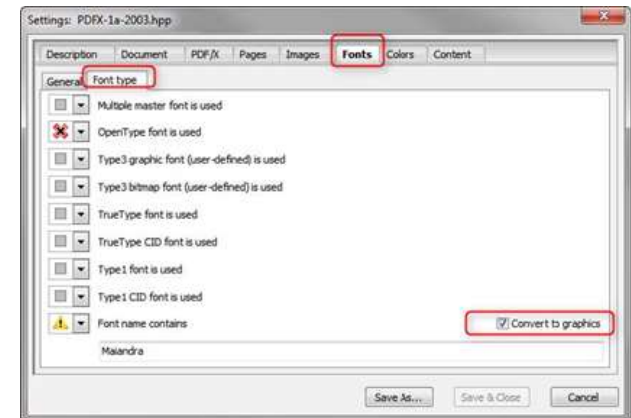
- Preflight limited to individual pages /one-ups (current, all, odd or even)
- Report shows which page area has been checked
- Expanded checking for spot colors
 - Differentiation between transparent and opaque spot colors
 - Check whether spot color is listed in current color table and whether it appears accurately on all pages
 - Check whether the name of each particular spot color includes one of the names in the list



New Features for Folding Box Production

PDF Toolbox - Preflighter/ PDF-Report

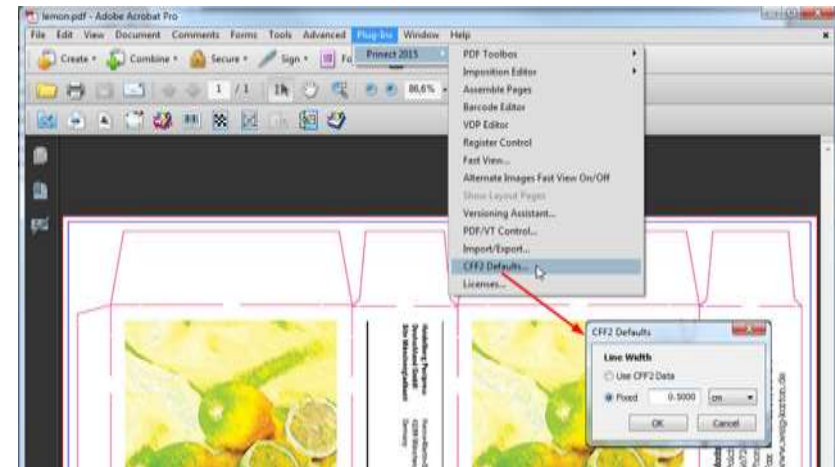
- Converting text into graphics
- Converting comments into content



New Features for Folding Box Production

PDF Toolbox - Page Assembly

- Selectable line width for imported CFF2 files
 - Facilitates the comparison of content and die cut



New Features for Folding Box Production

PDF Toolbox - Object Editor

- Editing in wire frame mode
- Objects can be aligned to selected object's bounding box
- Text can be divided into individual characters
 - Each character can be addressed and modified, e. g. be given a new color



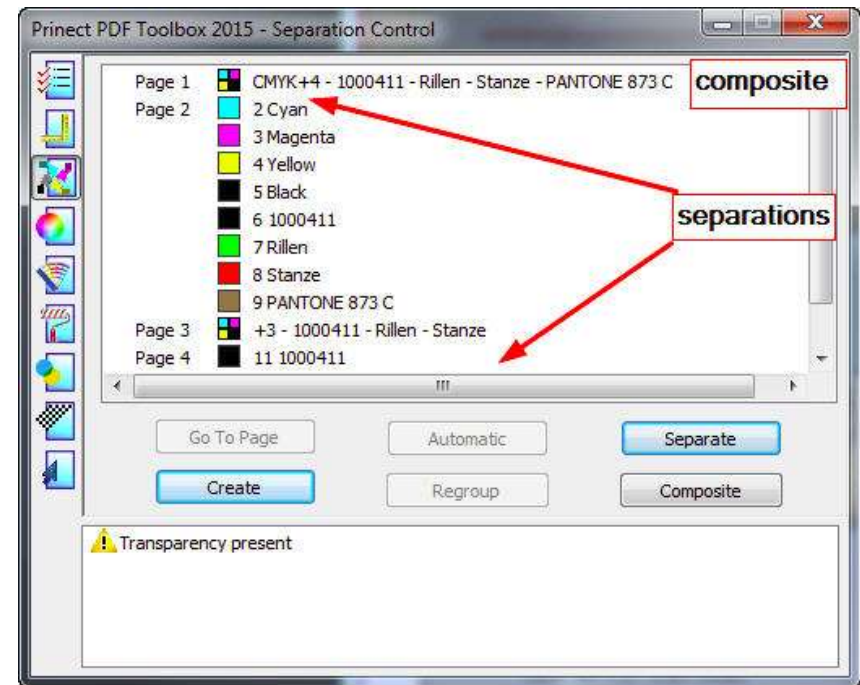
New Features for Folding Box Production Signa Station Packaging Pro

- Layout and 3D optimizations like in Package Designer
- New barcode features like in Barcode Editor
- Better Usability
 - Ink-pick-up bar with predefined ink coverage per zone
 - Replacer mark for number of one-ups on layout or entire sheet
 - Number of free attributes expanded from 15 to 99
 - Color control strips position automatically in free areas

New Features for Folding Box Production

What else?

- Display of 3D in Cockpit
- Calibration curves per color/ink
- Fast creation of “position control separation” via imposed PDF
- Composite PDF together with separated PDF in one file to check finishing
- Better administration of amounts for production to/from stock
- Pre-produced product parts can be transferred directly to follow-up jobs without dedicated warehouse management software

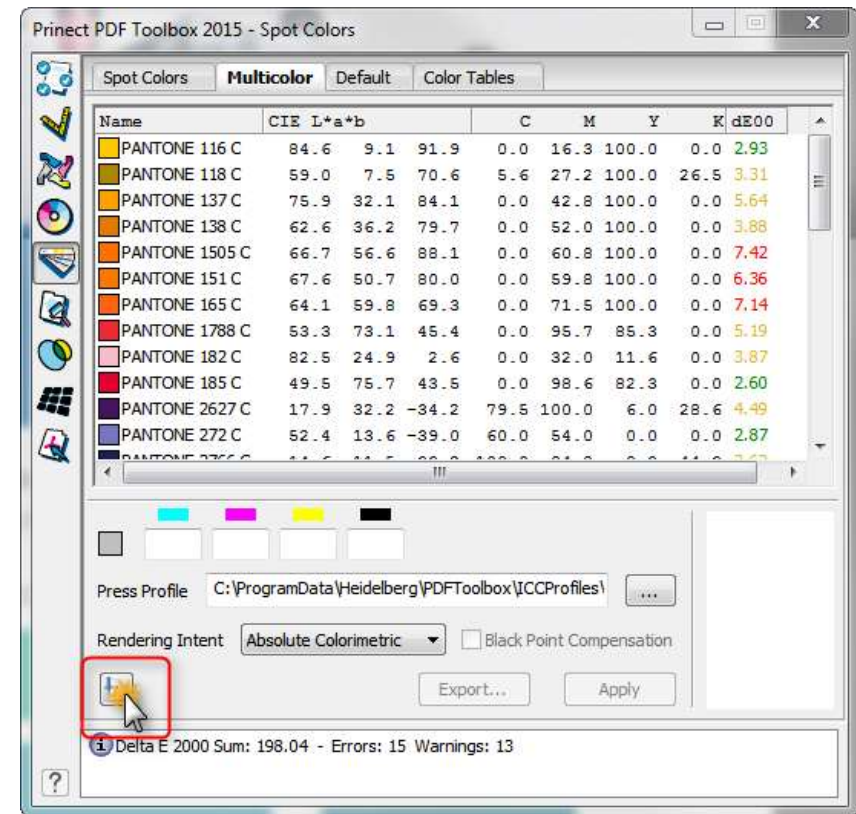


Demo

New Features P2015

Enhancements for Spot Color Replacement with Multicolor

- Spot color replacement can be limited to images only
 - Spot color still be used for critical spot colors
- Delta E table can be sorted by greatest/ smallest deviation
 - Faster decision possible
- ...



New Features P2015

Automatic job selection at the press

- Generation of unique plate code marks
- Placement of plate code barcode on imposition sheet template
- Secured and automatic job selection by scanning the plate code barcode at the press



New Features P2015

Generation of pallet sheets

- Creation of pallet sheets for the active job with
 - Administrative job data e.g. job number barcode
 - Run length
 - Number of printed sheets
 - Company logo
 - Operator's comment
 - Information about following work step (if available)
- Customizing is possible
 - Easy identification of pallets
 - Less searching





INTERNATIONAL
PRINECT USER DAYS

8th and 9th October 2014

5. International Princt User Days, October 8th and 9th, 2014

Thank you for your attention!

HEIDELBERG

