



INTERNATIONAL
PRINECT USER DAYS

8th and 9th October 2014

5. International Prinect User Days, October 8th and 9th, 2014

News for Folding Carton and Label Production

Sabine Roob, Sebastian Nickel



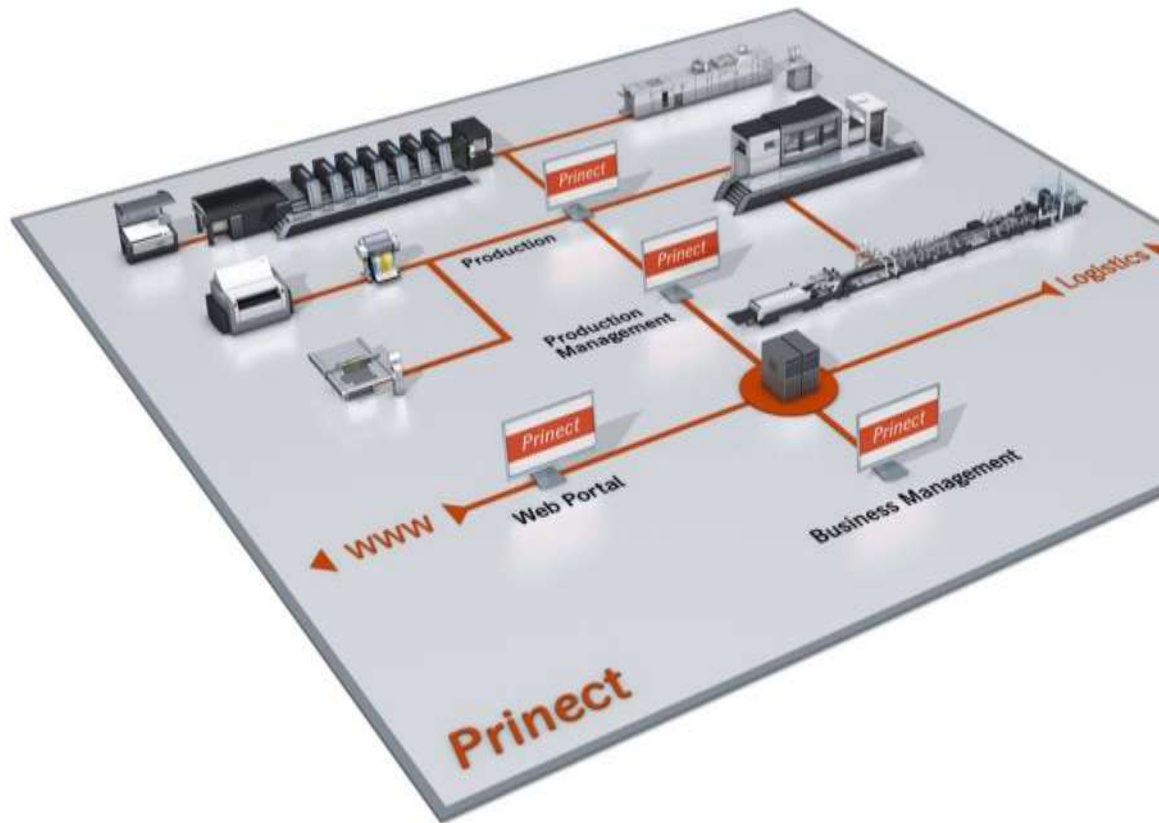
HEIDELBERG



Agenda

1. Prinect for Packaging
2. DCS 340 with Prinect Digital Front End – Label
 - Demo: Variable Data Creation
3. Fast creation of design and estimation data
 - Demo: Package Designer Integration
4. Fast gang form creation
 - Demo: New features of Sheet Optimizer
5. Overview new features in P2015 for carton and label production
 - Demo

Prinect Solution for Folding Boxes & Label Production Production in Offset – from Design to Finishing!



MIS / ERP Integration

Structural and Graphics Design

Prepress Workflow

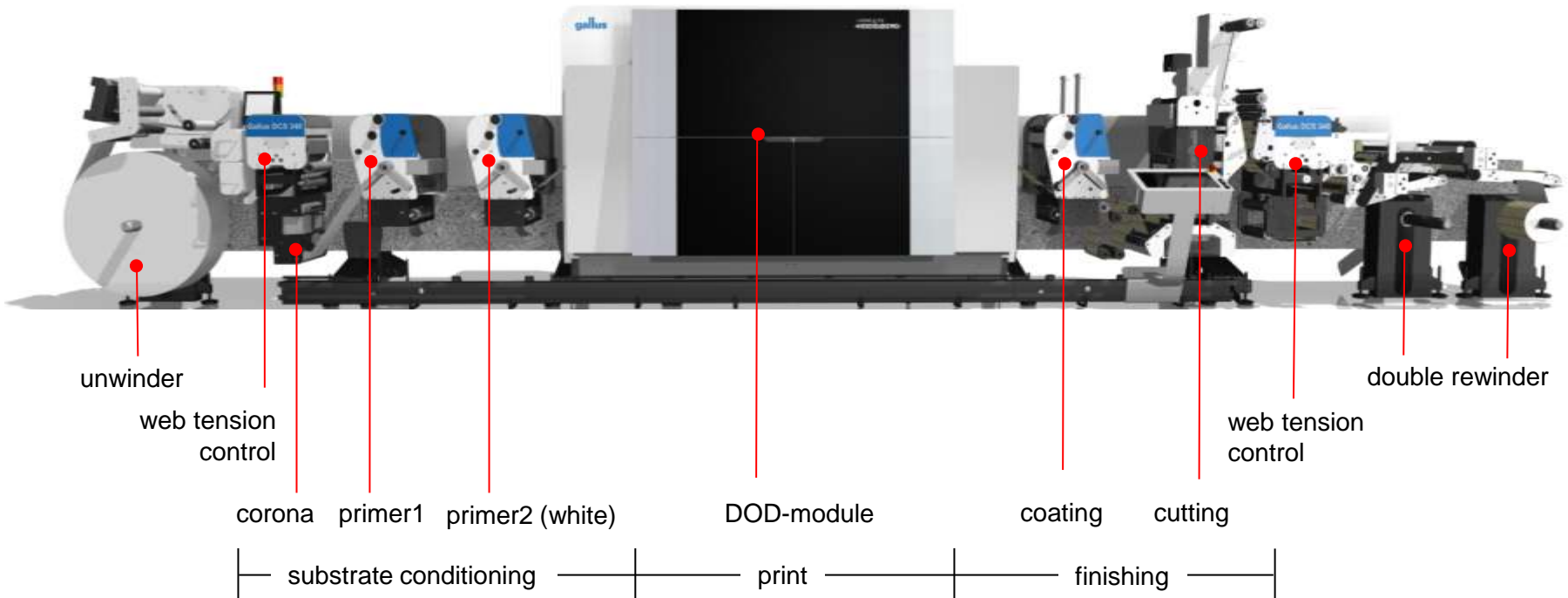
Print Integration

Color and Quality Management

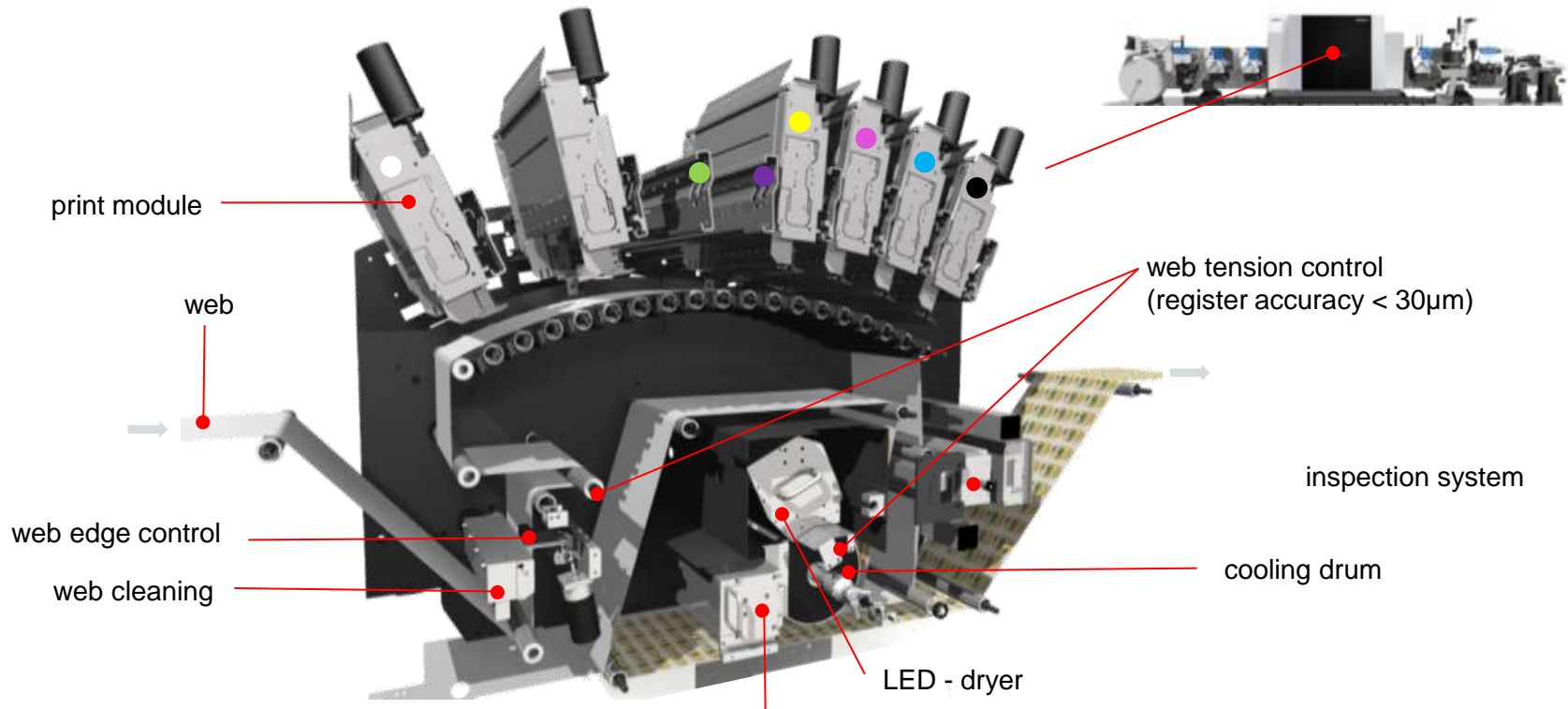
Finishing Integration

Gallus DCS 340

New Digital Label Converting System



Gallus DCS 340 Digital Print Unit



Gallus DCS 340

Brilliant colors and large color range with 7c-separation

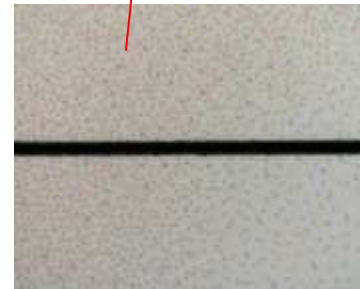


Gallus DCS 340

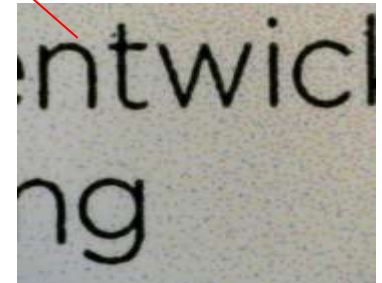
Highest Print Quality with 1200 dpi



natural skin tones



sharp lines



sharp characters

Prinect Digital Front End Label General Overview



Prinect DFE-Label



Data preparation in highest quality

- Fast output of job data (Prepared Job or 'single' PDF)
- Preflight & corrections in PDF
- Adaption to used inks & spot color adaption
- Variable Data Printing & Creation



HMI

Machine Control UI

- Machine settings
- Job queue control
- Control print heads
- Machine feedback

Prinect Digital Front End Label Data Delivery

- Take over prepared data from any workflow (e.g. Esko)

- Imposed PDF of whole segment

or

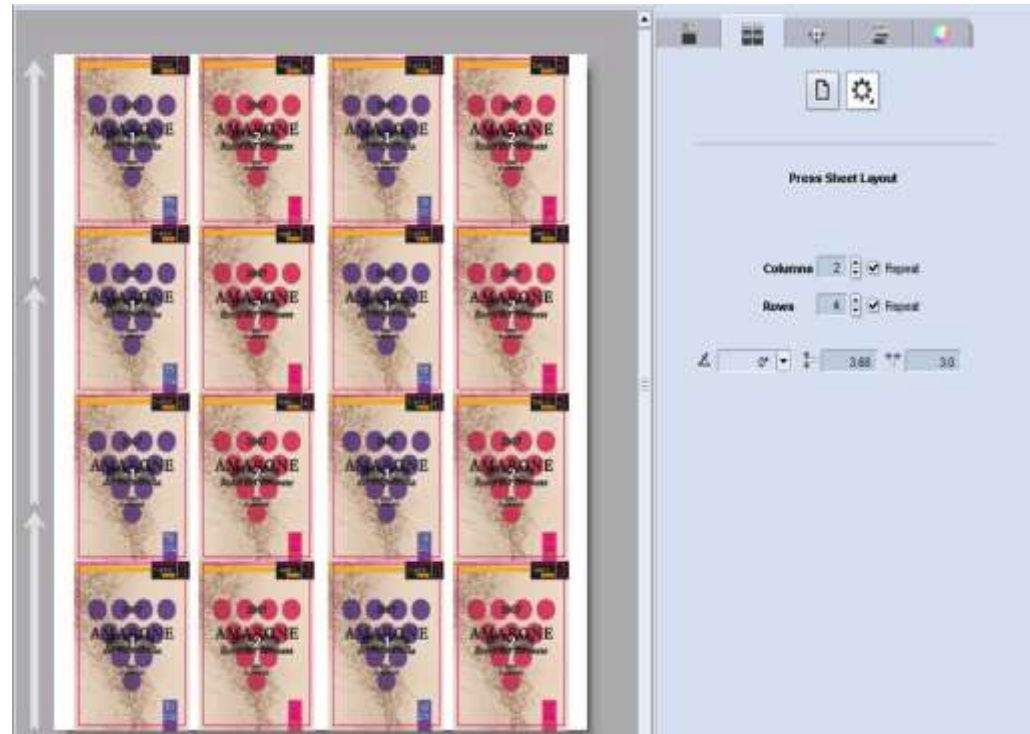
- PDF(s) of single articles



Prinect Digital Front End Label Output of «single» PDF(s)

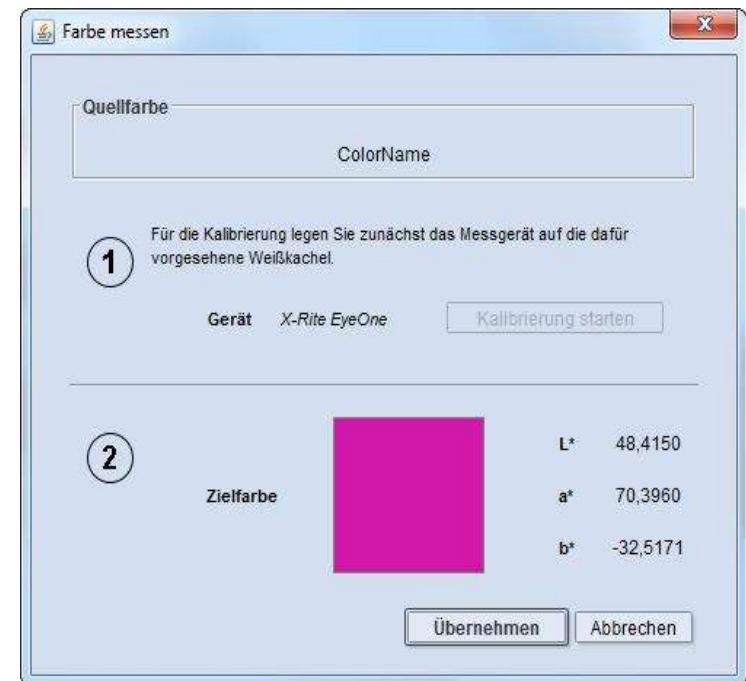
Work Steps

1. Create job
2. Prepare digital print
 - a. Select substrate
 - b. Layout/Impositioning**
 - c. Screening



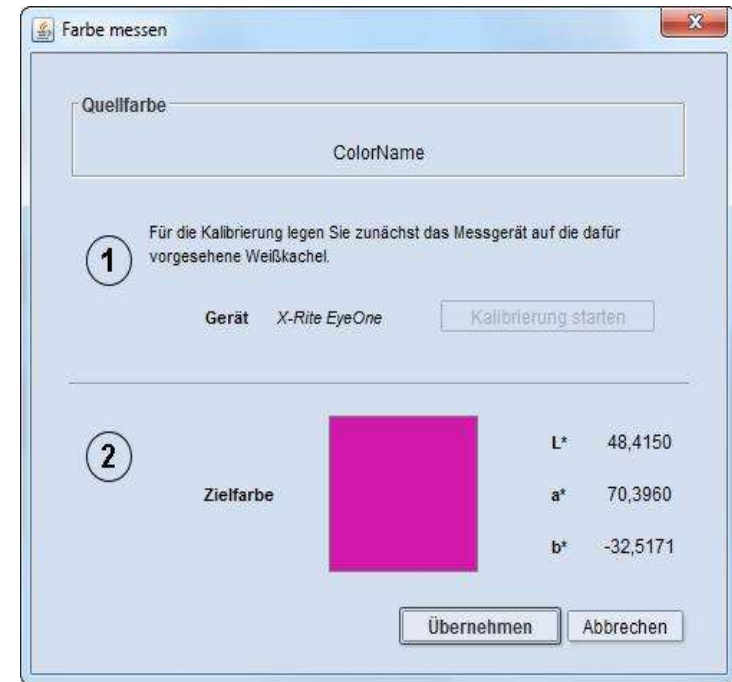
Prinect Digital Front End Label Spot Color Adaptation

- Color defined by document



Prinect Digital Front End Label Spot Color Adaptation

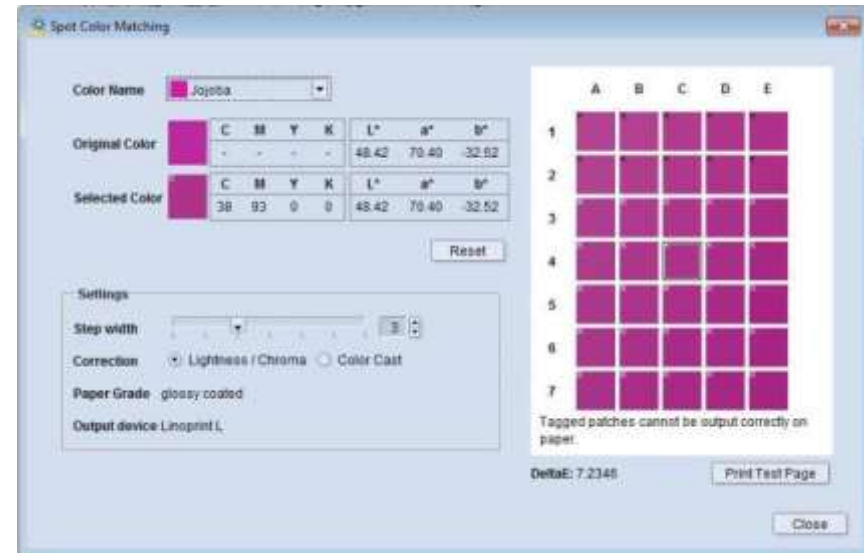
- Customer brings a sample with a slightly different color
 - Measure color and take measured values



Prinect Digital Front End Label

Spot color matching

- If customer requires a slightly different color, it is possible to select from surrounding colors
 - Steps of modification can be defined in both directions – Lightness and Color Cast



Prinect Digital Front End Label

Spot color matching

- New values can be stored for repeat or similar jobs

Assignment of job colors to mark colors

Automatically per surface
 User-defined: Global in layout
 Allow spot colors for BCMY

"Process" target: CMYK..., else L*a*b*
 "Output" target: CMYK..., else L*a*b*

Submit print order to press
 Output empty separations

Take color definitions for new colors from color tables
 Autoresolve naming conflicts for new colors

Color List: All Colors

Color	Name	Source	Target	Marks	Type	Usage	C	M	Y	K	L*	a*	b*	ND	Screen
Black	Black	Job	Output	Automatic	Normal	Printing Unit	0	0	0	100				1.70	
Cyan	Cyan	Job	Output	Automatic	Normal	Printing Unit	100	0	0	0				0.61	
Magenta	Magenta	Job	Output	Automatic	Normal	Printing Unit	0	100	0	0				0.76	
Yellow	Yellow	Job	Output	Automatic	Normal	Printing Unit	0	0	100	0				0.16	
Jojoba	Jojoba	Job	Output	Automatic	Normal	Printing Unit					48	70	-33	0.56	
Orange_DigitalNow	Orange_DigitalNow	Color ta...	Output	Automatic	Normal	Printing Unit	0	62	100	0				0.54	
Stanzkontur	Stanzkontur	Job	Output	Automatic	Normal	Tool	0	100	0	0				0.78	

Prinect Digital Front End Label Identification with CERM and Prinect Prepress

- Print Separators before and after each Job / Segments

Articles



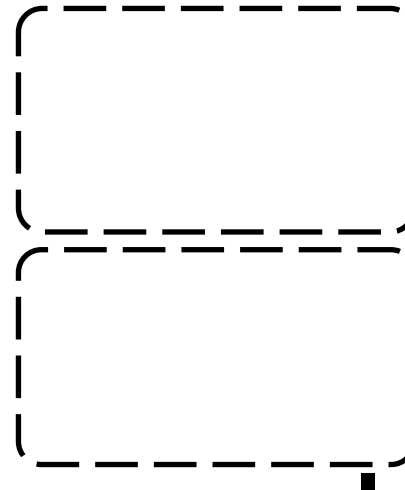
1000 repetitions

Segment Separator



1 repetition

DieCut Separator

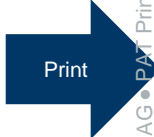


1 repetition

Job Separator



Job: 0815
ToolID: T1234
Customer: Hankel



1 repetition

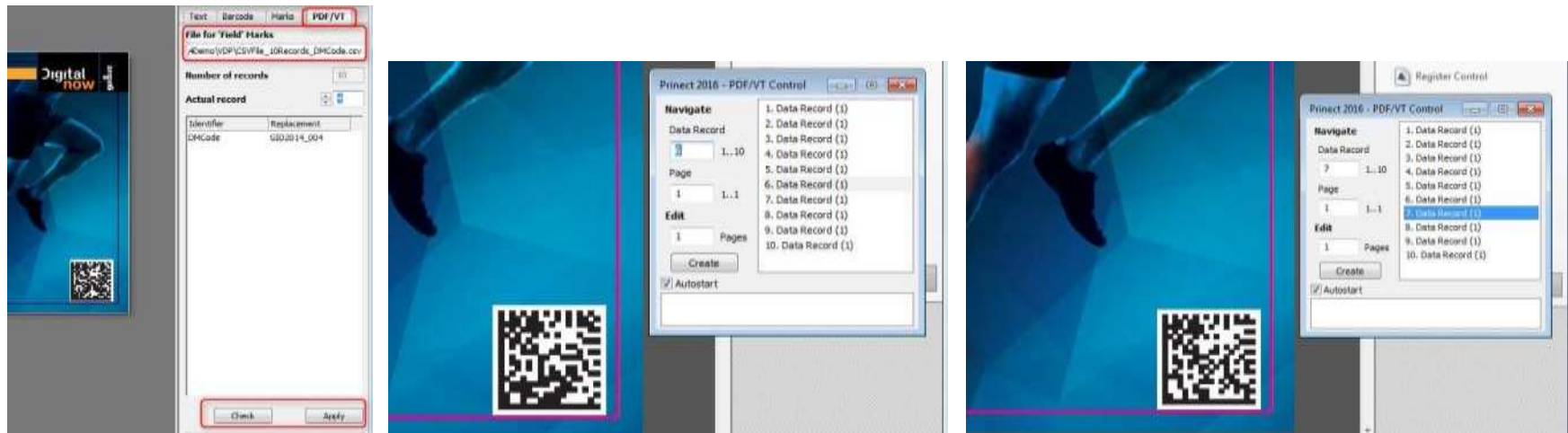
Prinect Digital Front End Label Variable Data Printing

- Datamatrix code with individual number on each one-up



Prinect Digital Front End Label Variable Data Printing

- Output as PDF-VT
- Check with PDF-VT Control



Demo Variable Data Creation



Extended Workflow with Prinect and CERM Integration

Prinect:

- Extended prepress functionality for digital label printing
 - Automated and interactive prepress functionality for data preparation
 - Color management for most challenging requirements
 - Sophisticated layout functionality with additional information
- High transparency of the entire production workflow
 - Analysis of shop floor data

CERM - Complete and dedicated MIS for narrow web printers

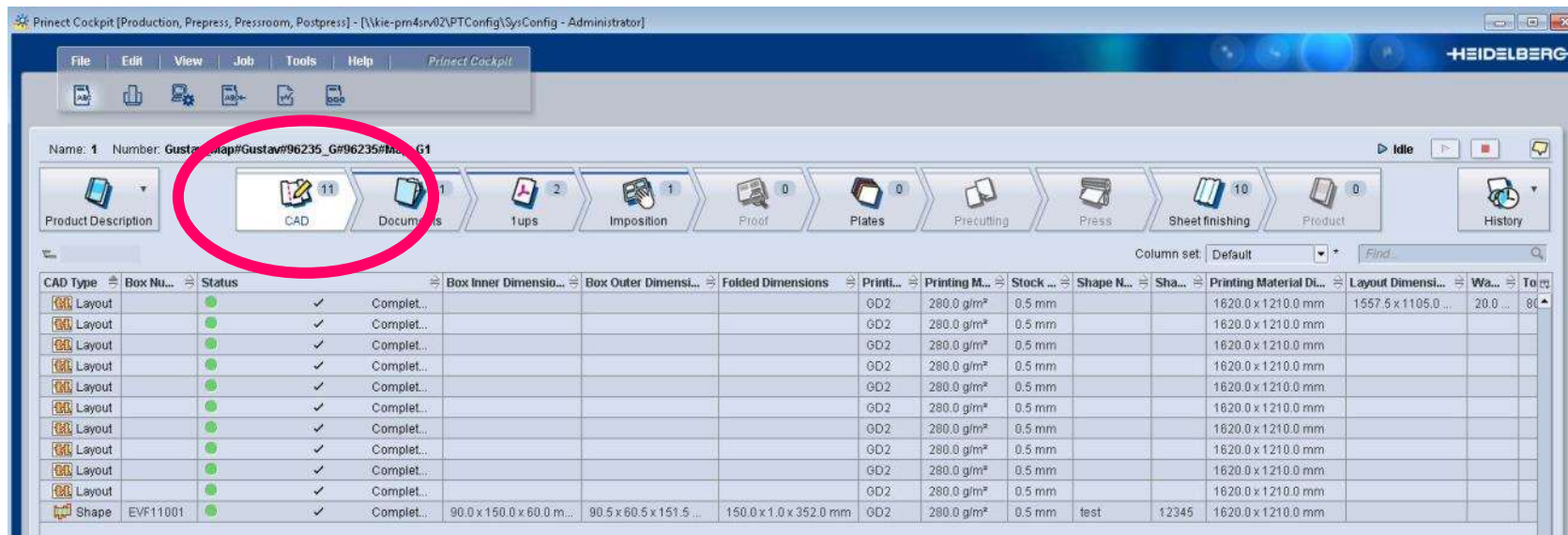
- Streamlined administration and prepress:
 - including a web front end for the brand owners and sales representatives
 - with a strong integration with prepress and production software
 - and a focus on automation of repeat jobs
 - in order to reduce errors and save costs in administration and production

Prinect 2015 – News in Packaging

- 1. Fast estimation with production data: Package Designer Integration**
2. Fast and easy gang job calculation with Sheet Optimizer
3. News for efficient label and folding carton production

Integration of structural Design

- New Prinect task “CAD”



The screenshot shows the Prinect Cockpit software interface. The top menu bar includes File, Edit, View, Job, Tools, and Help. Below the menu is a toolbar with icons for Product Description, CAD (highlighted with a red circle), Documents, 1ups, Imposition, Proof, Plates, Precutting, Press, Sheet finishing, and Product. The main workspace displays a table of job data with columns for CAD Type, Box No., Status, Box Inner Dimensions, Box Outer Dimensions, Folded Dimensions, Print Length, Printing Material, Stock, Shape No., Printing Material Dimensions, Layout Dimensions, and Wa. The table contains several rows of job data, including Layout and Shape entries.

CAD Type	Box No.	Status	Box Inner Dimension...	Box Outer Dimensi...	Folded Dimensions	PrintL...	Printing M...	Stock ...	Shape N...	Sha...	Printing Material DL...	Layout Dimensi...	Wa...	To...
Layout		✓				GD2	280.0 g/m ²	0.5 mm			1620.0 x 1210.0 mm	1557.5 x 1105.0 ...	20.0 ...	80...
Layout		✓				GD2	280.0 g/m ²	0.5 mm			1620.0 x 1210.0 mm			
Layout		✓				GD2	280.0 g/m ²	0.5 mm			1620.0 x 1210.0 mm			
Layout		✓				GD2	280.0 g/m ²	0.5 mm			1620.0 x 1210.0 mm			
Layout		✓				GD2	280.0 g/m ²	0.5 mm			1620.0 x 1210.0 mm			
Layout		✓				GD2	280.0 g/m ²	0.5 mm			1620.0 x 1210.0 mm			
Layout		✓				GD2	280.0 g/m ²	0.5 mm			1620.0 x 1210.0 mm			
Layout		✓				GD2	280.0 g/m ²	0.5 mm			1620.0 x 1210.0 mm			
Layout		✓				GD2	280.0 g/m ²	0.5 mm			1620.0 x 1210.0 mm			
Shape	EVF11001	✓	90.0 x 150.0 x 60.0 m...	90.5 x 60.5 x 151.5 ...	150.0 x 1.0 x 352.0 mm	OD2	280.0 g/m ²	0.5 mm	test	12345	1620.0 x 1210.0 mm			

- Request either from Cockpit or MIS (e.g. Boxsoft)

CAD Request in Cockpit

- Creating new Designs
 - Standard Design can be selected in the MDS from Package Designer libraries
 - Direct input of ABH dimensions
 - Material can be selected likewise

Start CAD Request

Specify the shape ID, construction code, box dimensions, material and a DesignCreation sequence template to make a CAD request.

Shape ID: 12345

Shape Name: test

Construction Code: EVF11001 Select...

Box Dimensions:

A (Width): 60 mm

B (Length): 90 mm

H (Height): 150 mm

Material:

Brand: Change...

Article Number:

Quality: GD2 Select...

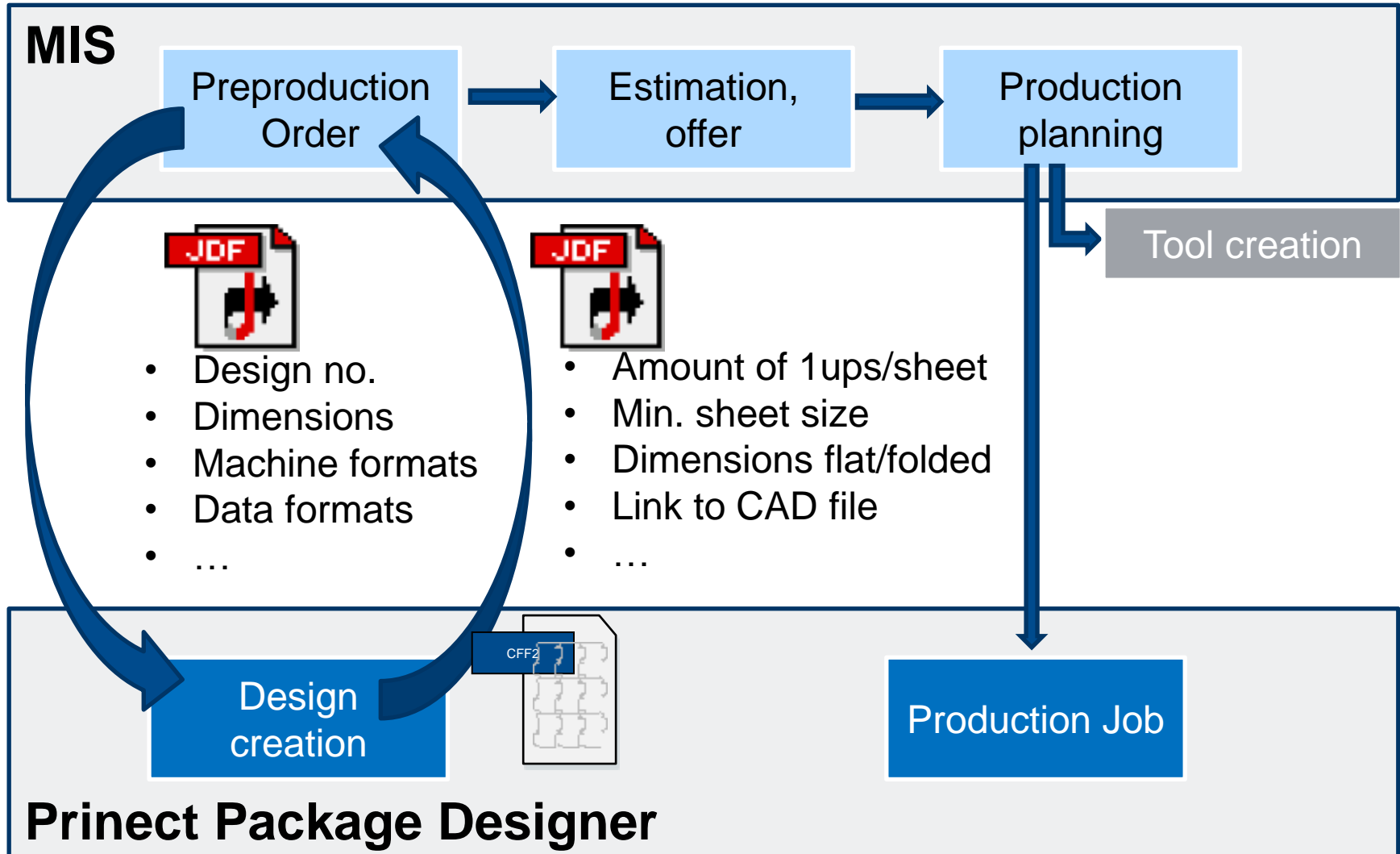
No default:

Tool ID: 8015

Sequence Template: ManuNUP

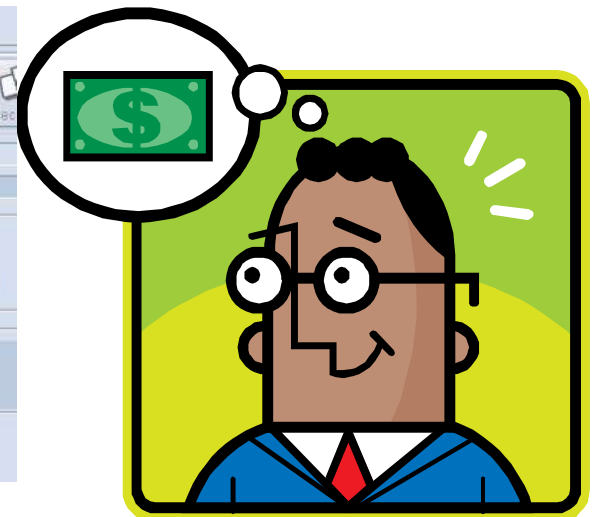
Start Request Cancel

Automated structural Design Workflow with MIS



Advantages of Integration of Package Designer

- Data has to be captured only once
- Exact production data for estimation in only seconds
- CAD data are directly available to prepress and production
- All data are saved and archived with the job > directly available for repeat jobs at any time



Demo Package Design Integration



Prinect 2015 – News in Packaging

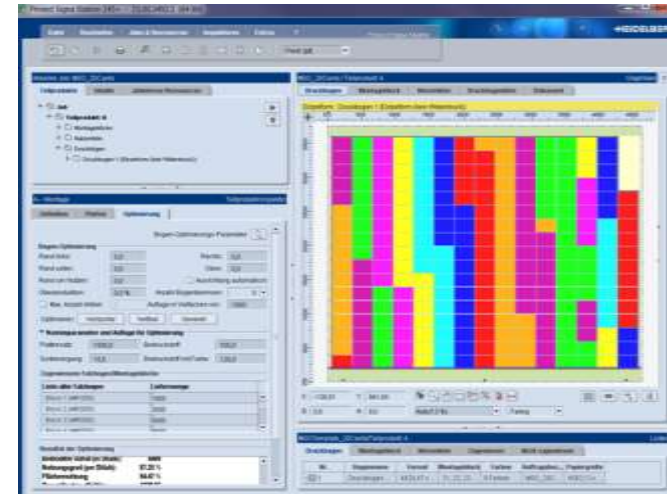
1. Fast estimation with production data: Package Designer Integration
- 2. Fast and easy gang job calculation with Sheet Optimizer**
3. News for efficient label and folding carton production

Prinect Signa Station Sheet Optimizer

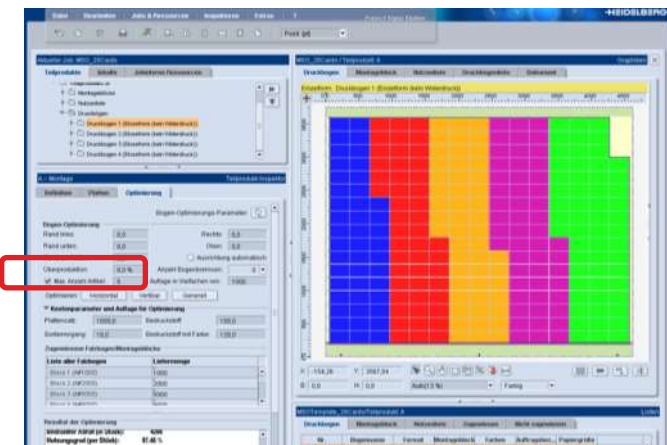
Higher reliability and more convenience

- Better distribution on sheet
- Limitation of articles per sheet
- Warning when the delivery quantity from the PDF name is misinterpreted
- Optimization results can be saved, exported and printed

No limitation:



Limitation to 5 articles:



Demo Sheet Optimizer



Prinect 2015 – News in Packaging

1. Fast estimation with production data: Package Designer Integration
2. Fast and easy gang job calculation with Sheet Optimizer
- 3. News for efficient label and folding carton production**

New Features for Label Production

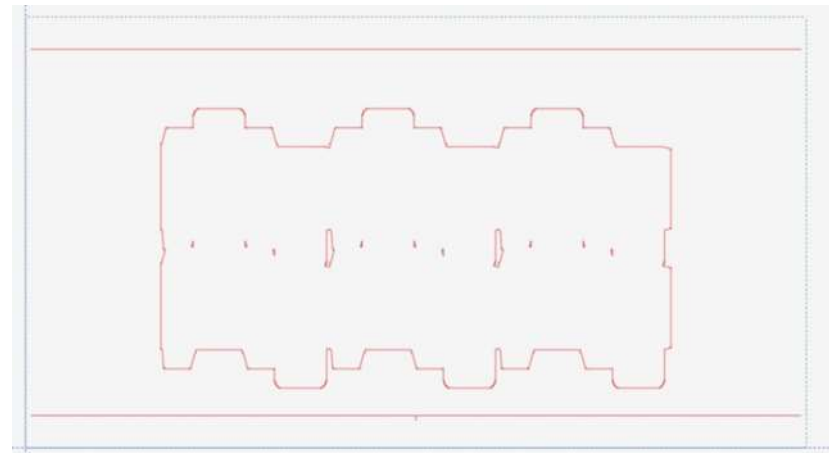
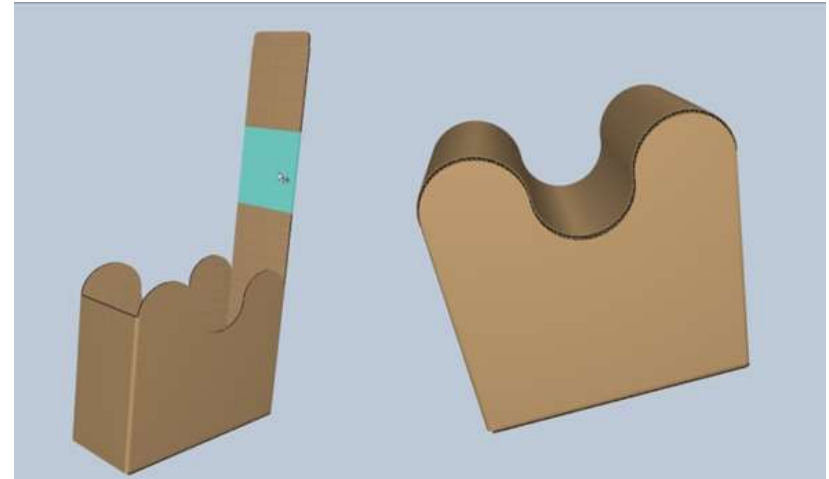
Automation of order creation

- Easy creation of order lists in e.g. Excel with
 - Article name and shape
 - Amount
 - Product type
 - Product code
 - ...
- Order info in csv-file can automatically create different gang jobs in cockpit
- Complete workflow automation is possible with Smartautomation

➤ **Enormous time saving during job set up!**

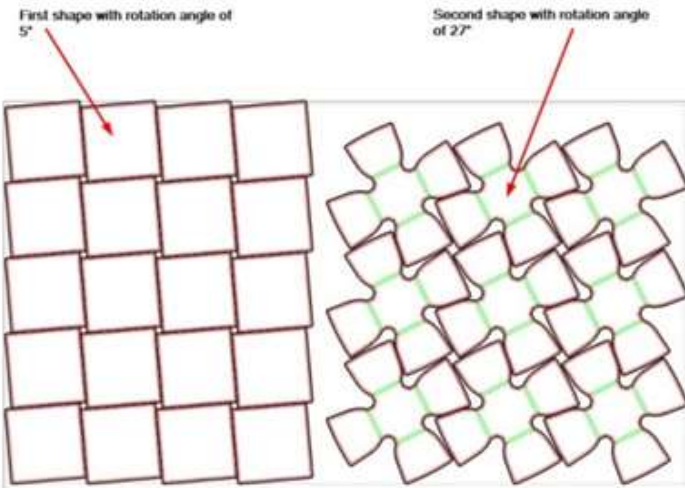
Structural Design with Prinect Package Designer

- New features for 3D simulation
 - Curved shapes
 - Dimensions in 3D
- 3D for secondary boxes / boxes for external objects
- New library for labels
- Fast creation of varnishing blankets
- Driver for Kongsberg Plotters have been implemented



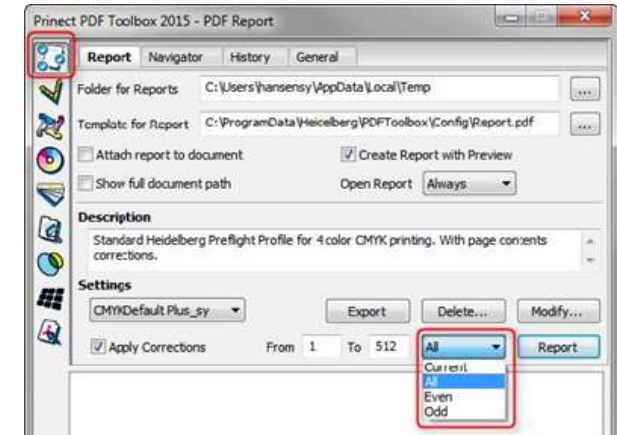
Optimized Layout Creation in Package Designer and Signa Station Packaging Pro

- Automated layout creation
- Different rotation angles for various shapes
- **Best usage of sheet**
- **Better pressure distribution for rotative die cutting**



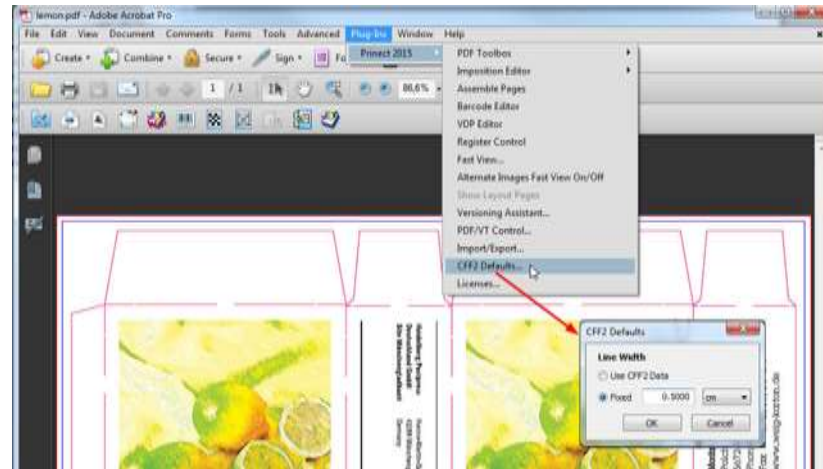
New Features for 1-up Processing in PDF Toolbox

- Preflighter/ PDF-Report
 - Definition of preflight areas
 - Expanded checking for spot colors
 - Convert text into graphics
 - Convert comments into content
- Object Editor
 - Editing in wire frame mode
 - Aligne to the selected object's bounding box
 - Dividing text into individual characters

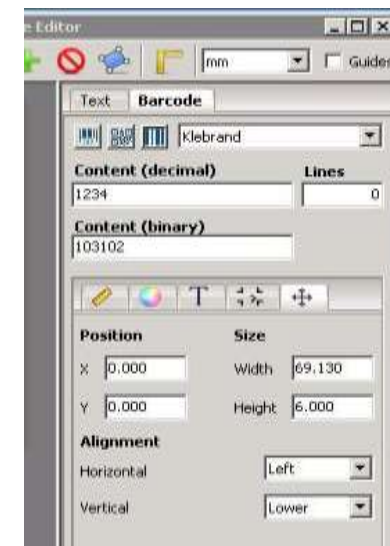


New Features for 1-up Processing in PDF Toolbox

- Page Assembly
 - Selectable line width for imported CFF2 files

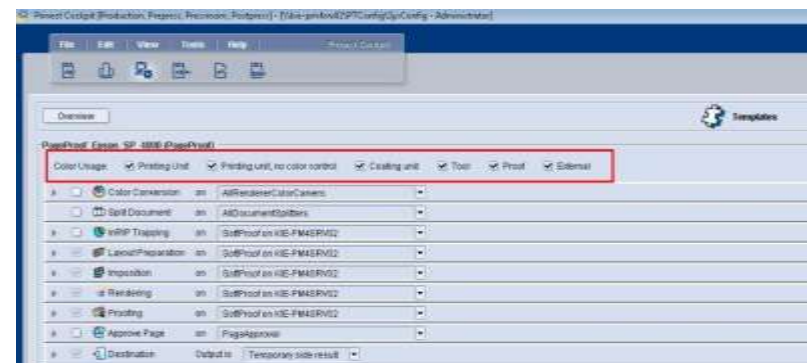
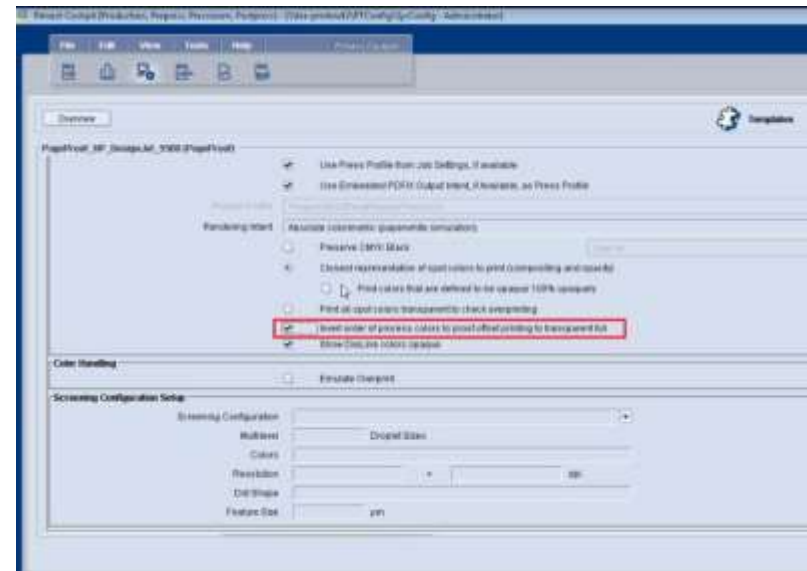


- Barcode Editor
 - Triangle symbol as limitation for binary barcodes
 - New „EMS code“ (= „Pharma Wide“)
 - New geometry features
 - Text marks



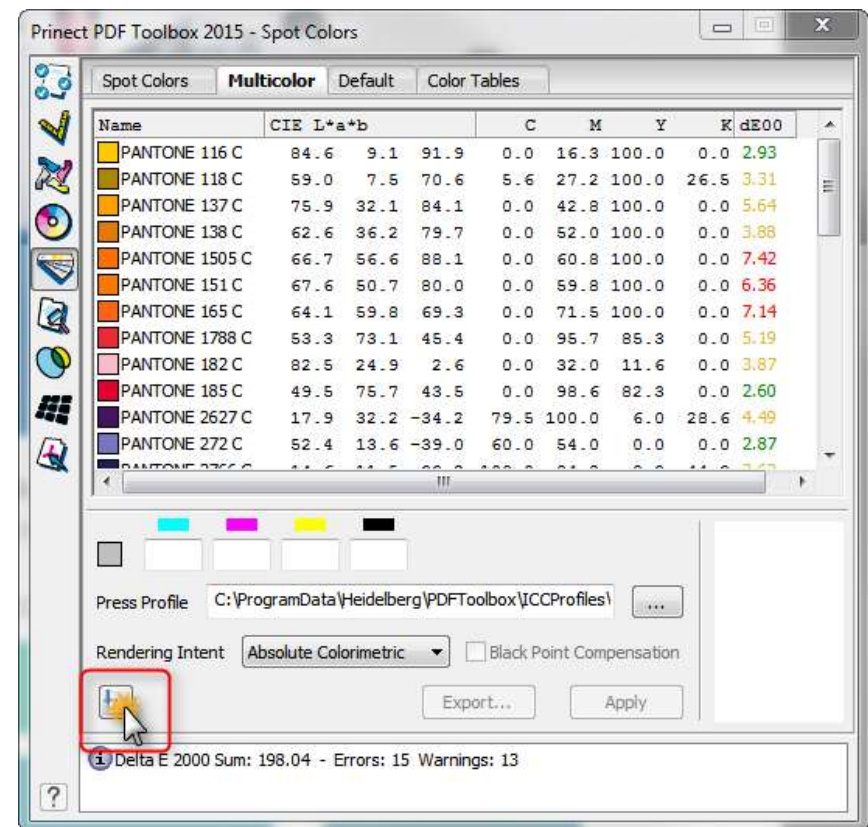
Improved Output, Page Proofing

- Page Proofing
 - Adaptation of color sequence for reverse foil printing – especially for white
- Improved Output
 - Dedicated calibration curve for each color



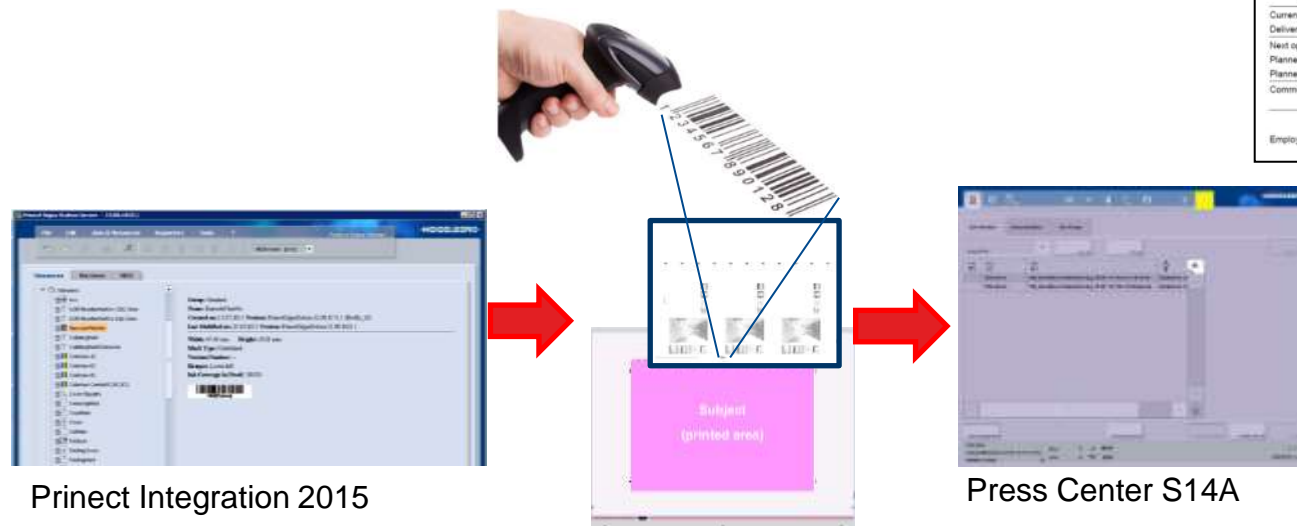
Enhancements for Spot Color Replacement with Multicolor

- Spot color replacement can be limited to images only
- Delta E table can be sorted to the largest/ smallest deviation
- Easy generation of result report



And many more ...

- Part Production
 - Pre-produced product parts can be transferred directly to repeat jobs without dedicated warehouse management software
- Fast identification
 - Automatic job selection at the press via barcode
 - Easy pallet identifications with customizable pallet sheets



14.07.2014 10:07
 Machine: WplTest_EM74-6L
 Print job manager: Robin Hood

Job number: **A12-0023**

Job Name: Anzeige Audi
 Print Sheet: Sheets
 Versions: -
 Customer: 10051, Viewag AG, Heidelberg
 Due Date: 31.12.2013

Pallet No. 1 with 4.800 Copies

Current Quantity: 4800 of 22950
 Delivery quantity: 90000
 Next operation: Sheets
 Planned Machine: Polar 176
 Planned Quantity: 22950
 Comment: This is a comment from Robin Hood.

Employee signature: _____

Demo Label and Folding Carton Production





INTERNATIONAL
PRINECT USER DAYS

8th and 9th October 2014

International Princt & Digital Sales Conference 2014

Thank you for your attention!

HEIDELBERG

